

Aina Haina Professional Building

**850 West Hind Drive
Honolulu, Hawaii 96821**

OFFICE SPACE FOR LEASE

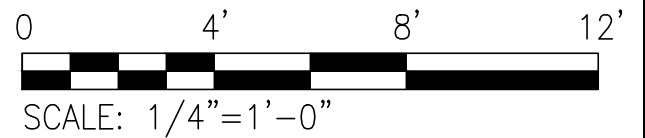
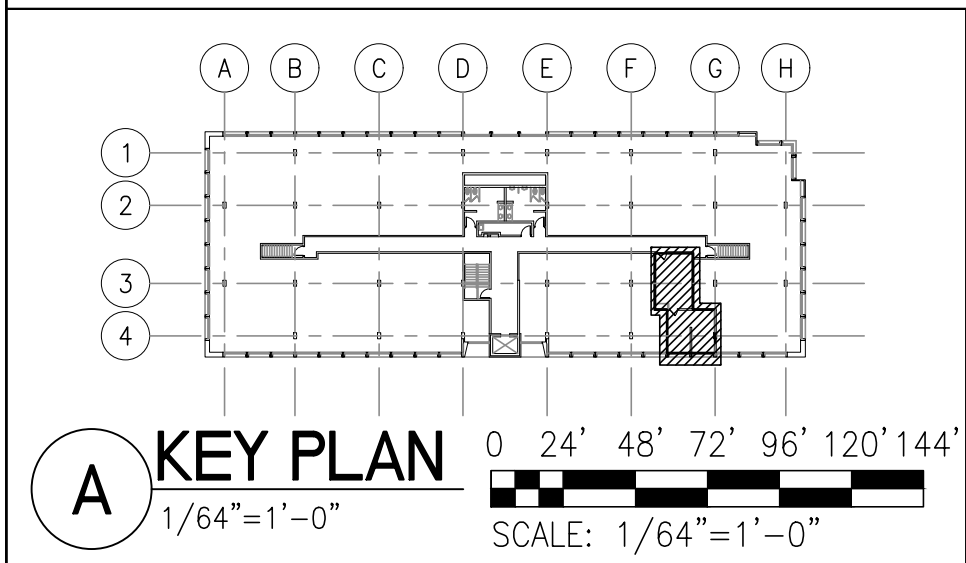
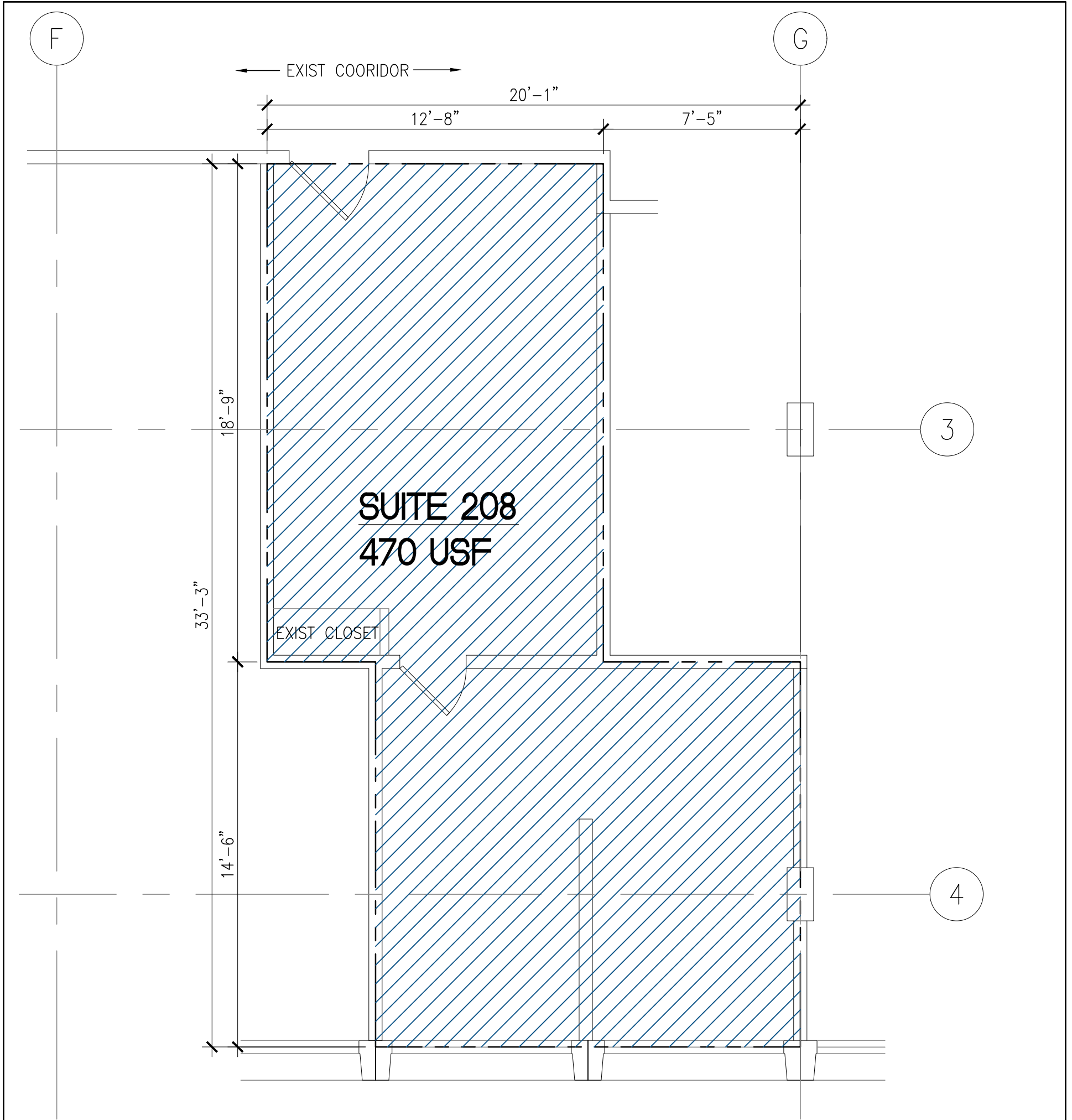


Property Type: Office Building
Space Size: 470 SF
Suite: 208
Base Rent: \$2.50 PSF
CAM Rate: \$2.87 PSF (Water/Sewer Included)
Building Size: Approximately 22,373 SF
Available: December 2025
Office Description: 2nd Floor unit, existing offices, move-in ready

Property Highlights: Located at the corner of Kalanianaʻole Highway and West Hind Drive, the Aina Haina Professional Building offers office space in one of East Honolulu’s most convenient and desirable locations. Situated alongside the busy Aina Haina Shopping Center, tenants benefit from immediate access to a gas station, post office, restaurants, banks, and abundant parking—all within walking distance.

This high-visibility location combines professional office space with unmatched neighborhood amenities, making it an ideal choice for businesses seeking convenience, accessibility, and community presence.

Ezy Paeste, General Manager
MMI Realty Services, Inc.
Direct: 808-728-4265
epaeste@mmirealty.com



LOD FLOOR PLAN
 1/4"=1'-0"

	1003 Bishop Street, Suite 2000 Honolulu, Hawaii 96813 Telephone: (808) 440-2780	PROJECT NAME: AINA HAINA PROFESSIONAL BUILDING SUITE 208 - EXHIBIT "A"		SHEET NUMBER: EXH A	
		PROJECT NO. 24003.00	REV. DATE: --	DATE: 01/19/24	