

Rita Parasnis

Tony Carrasco

BB Patel

# GARDEN PLACE

990 GARDEN  
EAST PALO ALTO  
CA 94301

PLANNING SUBMITTAL

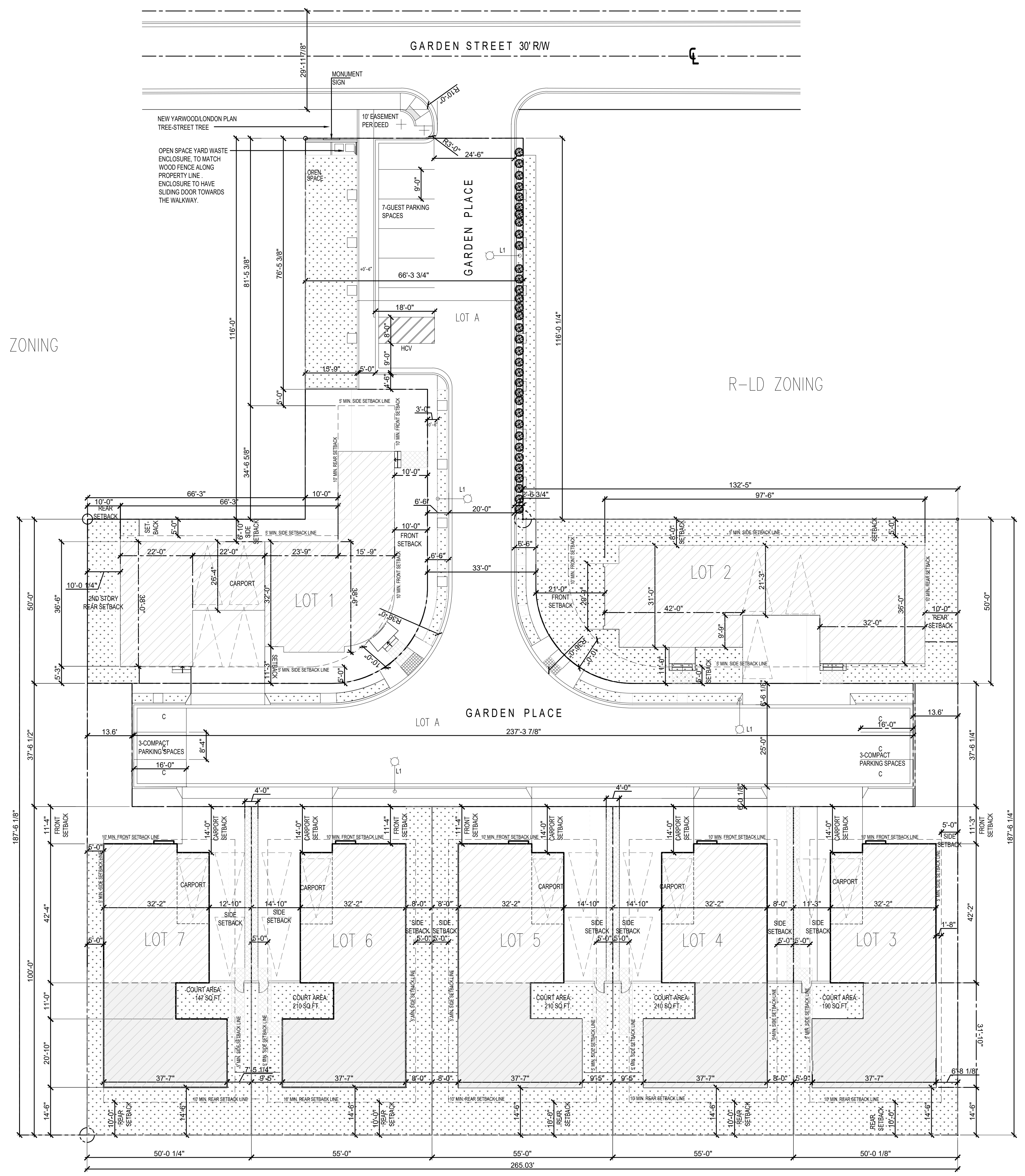
- CARPORTS HAVE BEEN PROVIDED FOR PARKING OF THE RESIDENTIAL UNITS. SHOWN IN DASHED LINES IN PLAN.
- PARKING FOR ADU UNITS HAVE BEEN PROVIDED IN THE DRIVEWAY.
- PROPOSED ATTACHED ADU UNITS ARE SET IN REAR YARD.
- FOR LOT DIMENSIONS SEE CIVIL PLAN SHEET C1.
- PER 18.96.040. (F) OPEN AREA GREATER THAN 750 SQ.FT. HAS BEEN PROVIDED ON ALL THE LOTS. (\*Open Space: A minimum of 750 square feet area shall be maintained on the lot\*).
- REAR OPEN SPACE IS CALCULATED BASED BEYOND FIRST FLOOR REAR SETBACK. SEE HATCHED AREA. IN ADDITION TO THIS AN INTERIOR COURT IS PROVIDED IN LOTS #3, 4, 5, 6 & 7. LOTS 1 & LOT#2 HAVE ADDITIONAL OPEN AREA IN SIDE YARDS.

### SUBDIVISION OF 9 LOTS WITH 7 RESIDENTIAL LOTS

LOT #	LOT AREA	ATTACHED ADU	REAR OPEN SPACE	F.A.R.
LOT A	17160 SF	NA	NA	NA
LOT 1	6370 SF	NA	-	4350.55 SF
LOT 2	6488 SF	NA	-	4225.87 SF
LOT 3	5500 SF	NA	-	2960.76 SF
LOT 4	5500 SF	NA	-	2960.76 SF
LOT 5	5500 SF	NA	-	2960.76 SF
LOT 6	5500 SF	NA	-	2960.76 SF
LOT 7	5500 SF	NA	-	2960.76 SF

R-LD ZONING

R-LD ZONING



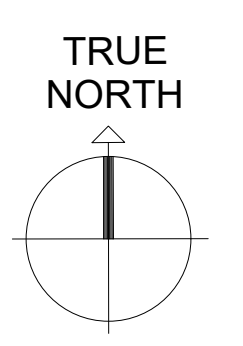
### LEGEND

- PROPERTY LINE
- SETBACK LINE
- BUILDING FOOTPRINT
- ADU FOOTPRINT
- 9' X 18' PARKING
- REAR OPEN AREA
- FIRETRUCK APPARATUS ACCESS
- COMPACT CAR PARKING
- NEW STREET LIGHT (TYP)

Date: 07/12/2022

REVISION:

Scale: 1 : 200



Sheet title:

SITE PLAN

Sheet no.

A1.0

of