

The Fairgrounds Business Park

24 Mollison Way | Lewiston, ME 04240



— Property Highlights —

- 10,000 - 52,000± SF of office, R&D, and flex space available
- Located on the City bus route
- Building mounted & monument signage available
- Area businesses include St. Mary's, Change Healthcare, DMV, Marco's Restaurant, and more
- Lease Rate : Flex- \$6.00/SF NNN
Office- \$10.00/SF NNN

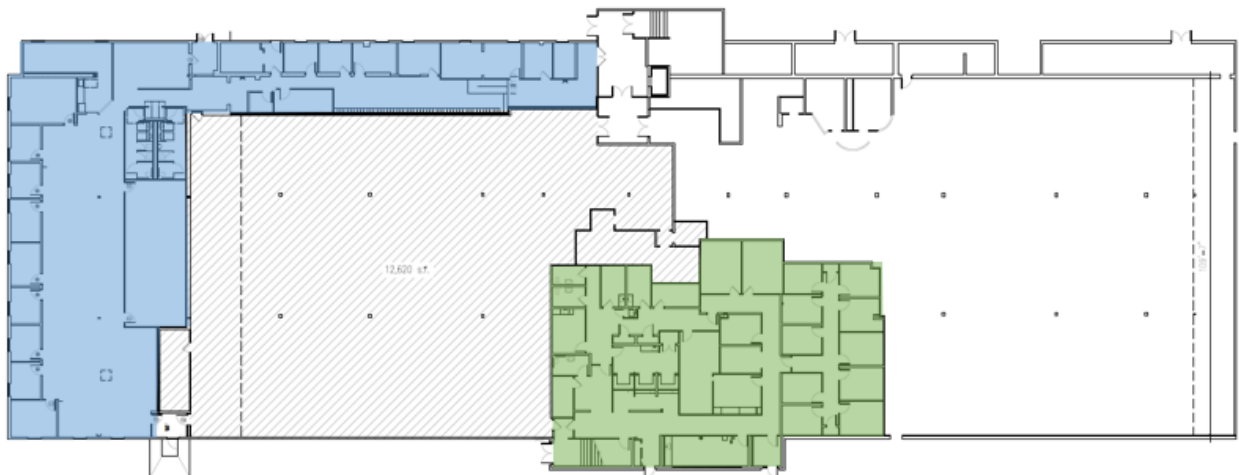


PORTA & CO.

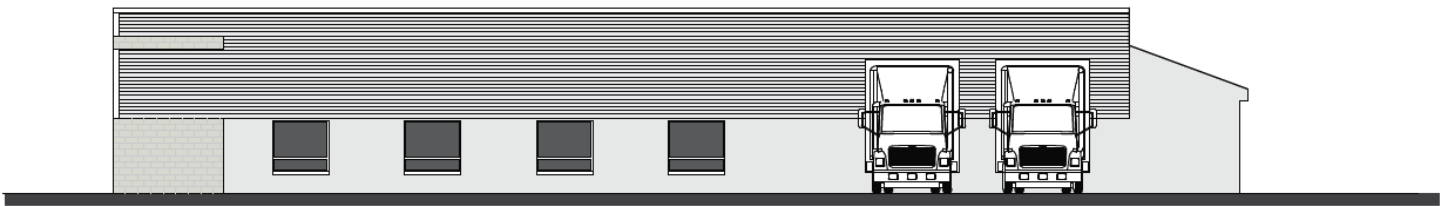
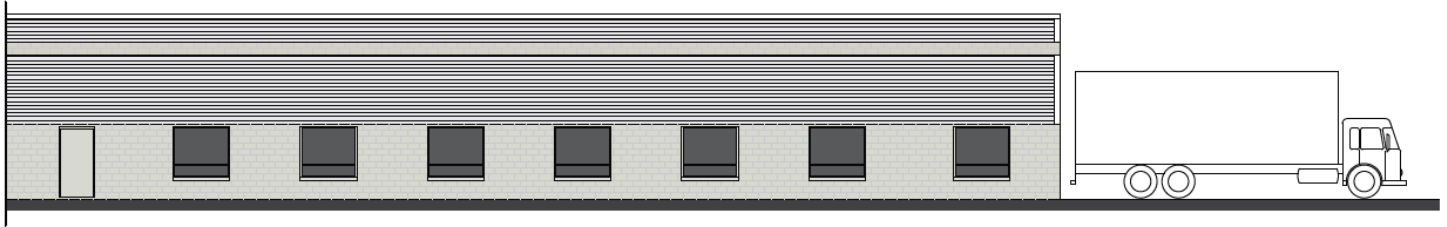
COMMERCIAL REAL ESTATE

30 Milk Street, Second Floor
Portland, ME 04101
207-747-1515
www.portacompany.com

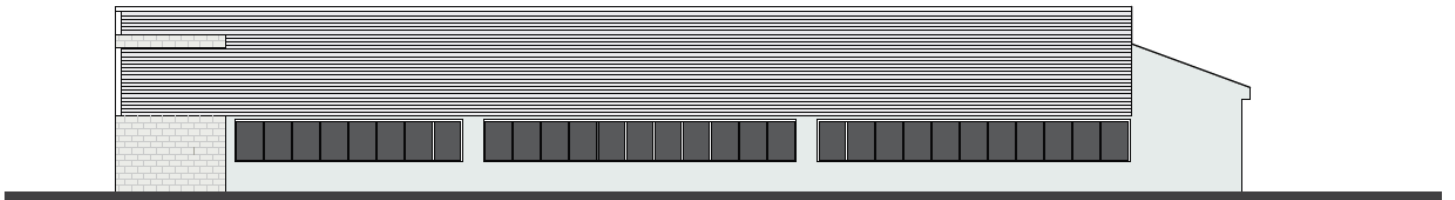
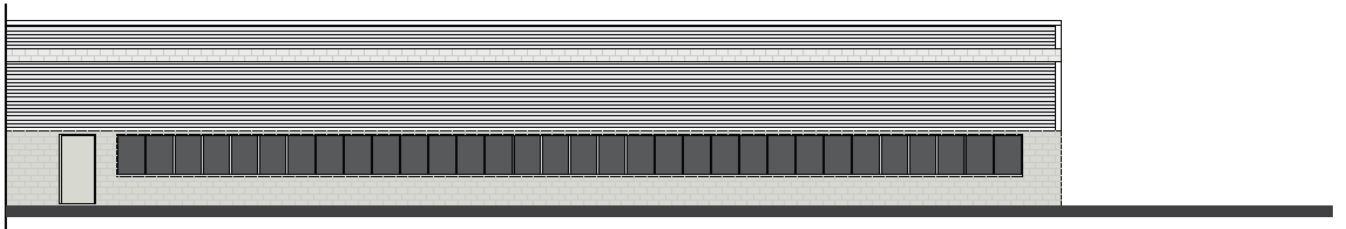
Owner	Lewiston Properties, LLC
Assessors Reference	Map 207, Lot 48
Building Size	60,000± SF
Lot Size	8.52± AC
Available Space	1st Floor- 10,000± SF to 40,000± SF 2nd Floor- 15,000± SF
Signage	Building Mounted & Pylon
Elevator	Yes
Utilities	Municipal water/sewer
Zoning	CB- Community Business District
Parking	Abundant and dedicated. 10/1,000 SF
Lease Rate	Flex- \$6.00/SF NNN Office- \$10.00/SF NNN



R&D/Flex with Loading Facilities



Office with Additional Window Installation





CONTACT



Tim Millett

Broker

C: 207-713-6995

O: 207-558-0893

tmillett@portacompany.com

This information has been obtained from sources believed reliable and is intended for informational use only. The information contained herein has not been verified for accuracy or completeness. It is recommended that prospective tenants and buyers conduct their own inspection of the property and verify all information. Any reliance on this information is solely at your own risk. Photos herein are the property of their respective owners. Use of these images without the express written consent of the owner is prohibited.

PORTA & CO.

COMMERCIAL REAL ESTATE

30 Milk Street, Second Floor
Portland, ME 04101
207-747-1515
www.portacompany.com