

# FOR LEASE



12707 - 12715 NE Halsey Street, Portland, Oregon 97230

AVAILABILITIES: 12715: 1,800 RSF (+/-)

RATE: \$3,000/Month MG (tenant responsible for utilities)

## HIGHLIGHTS:

- Free-standing office building
- Secure lot
- Nine (9) office-street parking stalls
- Easy highway access
- Tenant responsible for electrical, water, janitorial and phone/internet



**John Brandhorst**

*Licensed in Oregon*

[jbrandhorst@dougbear.com](mailto:jbrandhorst@dougbear.com)

**Adam Bean, SIOR**

*Licensed in Oregon*

[adambean@dougbear.com](mailto:adambean@dougbear.com)

**DOUG BEAN & ASSOCIATES, INC.**

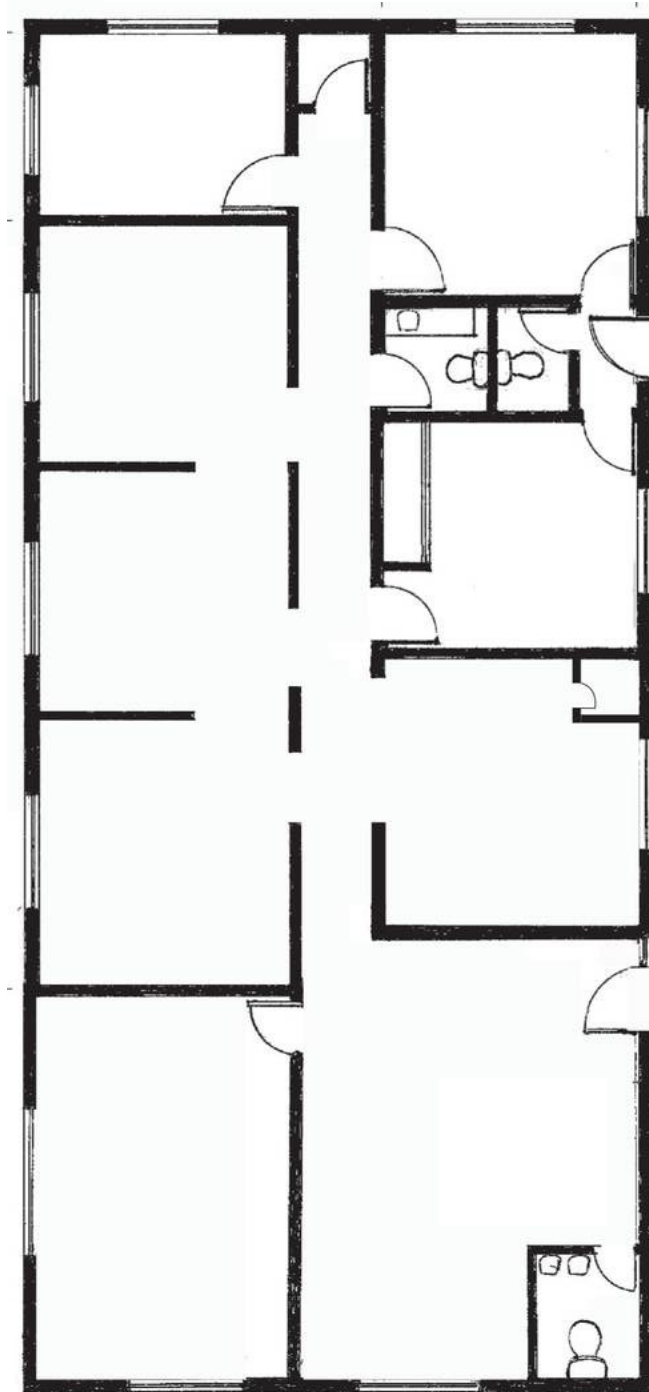
1200 NW Naito Parkway, Suite 180  
Portland, OR 97209

**503-222-5100**

[www.dougbear.com](http://www.dougbear.com)

# FOR LEASE

12707 - 12715 NE Halsey Street, Portland, Oregon 97230



1,800 RSF (+/-)



**John Brandhorst**

*Licensed in Oregon*

[jbrandhorst@dougbean.com](mailto:jbrandhorst@dougbean.com)

**Adam Bean, SIOR**

*Licensed in Oregon*

[adambean@dougbean.com](mailto:adambean@dougbean.com)

**DOUG BEAN & ASSOCIATES, INC.**

1200 NW Naito Parkway, Suite 180  
Portland, OR 97209

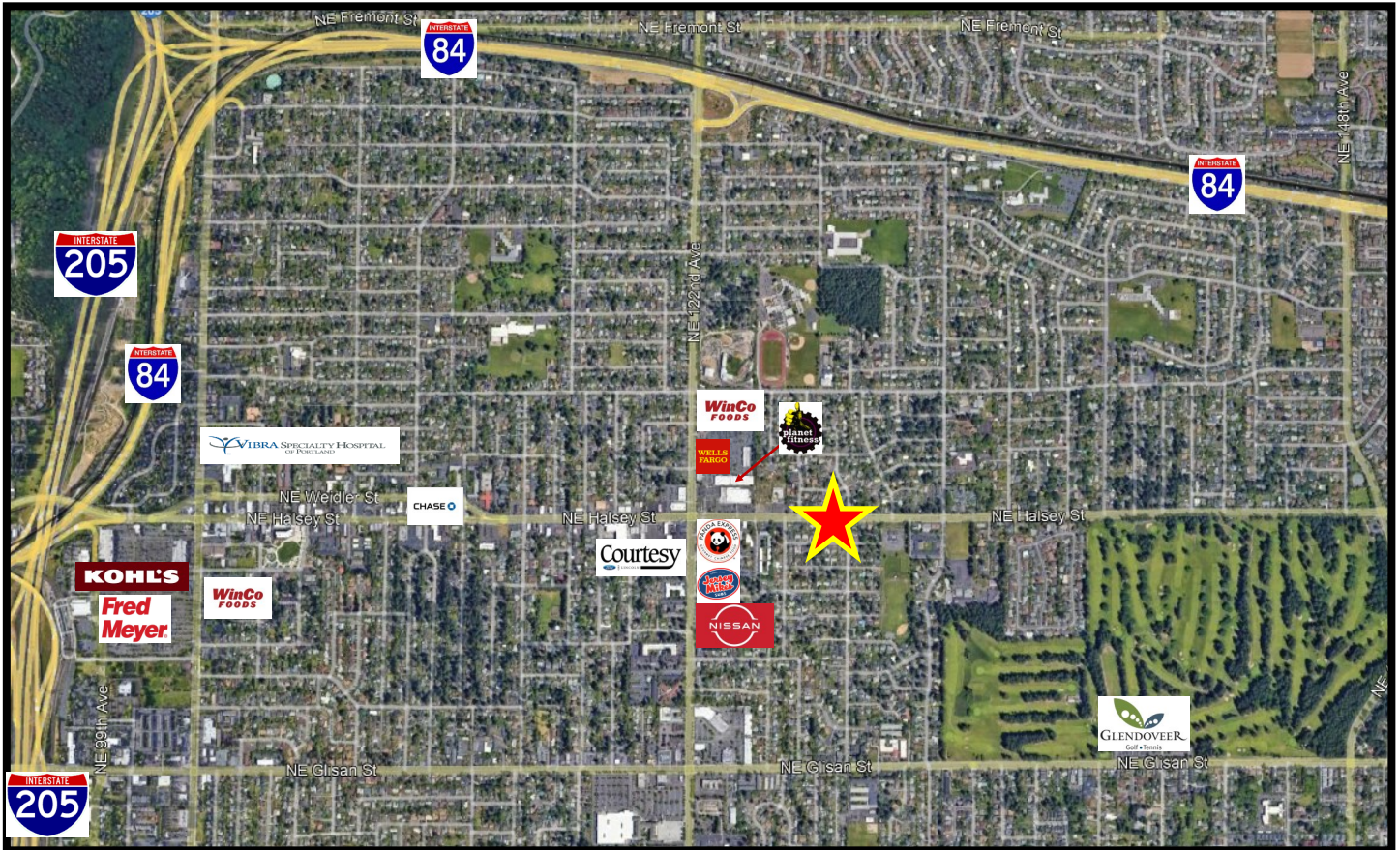
**503-222-5100**

[www.dougbean.com](http://www.dougbean.com)

Information contained herein has been obtained from others and is considered to be reliable. However, a prospective purchaser or lessee is expected to verify all information to their own satisfaction. [www.dougbean.com](http://www.dougbean.com)

# FOR LEASE

12707 - 12715 NE Halsey Street, Portland, Oregon 97230



**John Brandhorst**  
*Licensed in Oregon*  
jbrandhorst@dougbean.com

**Adam Bean, SIOR**  
*Licensed in Oregon*  
adambean@dougbean.com

**DOUG BEAN & ASSOCIATES, INC.**  
1200 NW Naito Parkway, Suite 180  
Portland, OR 97209  
**503-222-5100**  
www.dougbean.com

Information contained herein has been obtained from others and is considered to be reliable. However, a prospective purchaser or lessee is expected to verify all information to their own satisfaction. www.dougbean.com