

Ground Floor Retail

678 SF Total

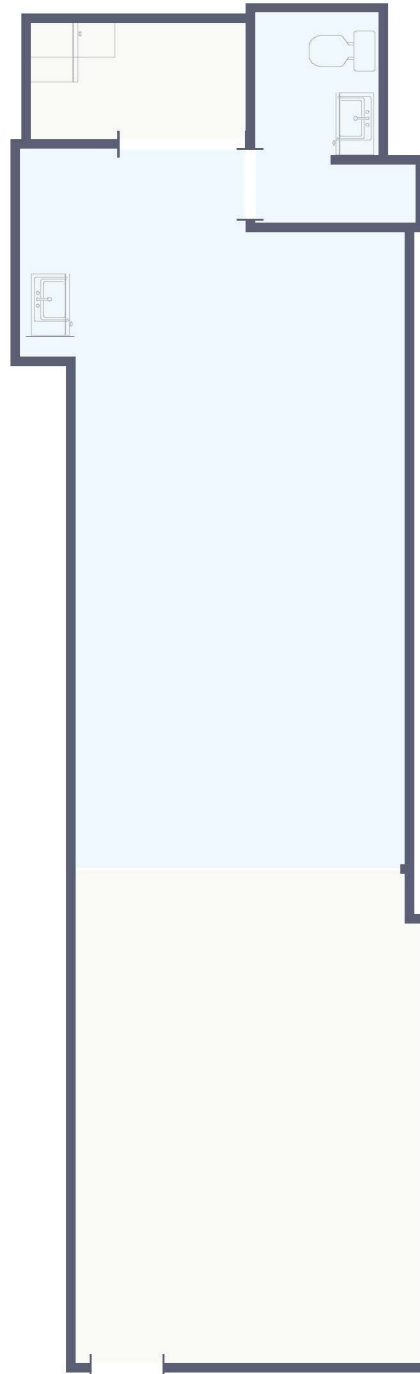
UNIT 110A

DESCRIPTION Ground floor retail space with two sinks, and bathroom with shower.

SIZE 678 SF

BASE RENT INQUIRE WITH AGENT

CAM INQUIRE WITH AGENT



Peter Crossman
 Lic. (RS) 68843
 peter@
 pacificpropertygrouphawaii.com
 (808) 282-0086

Keane Omaye-Backman
 Lic. (RS) 76415
 keane@
 pacificpropertygrouphawaii.com
 (808) 292-6861

Grace Asevedo
 Lic. (RS) 88159
 grace@
 pacificpropertygrouphawaii.com
 (225) 333-7965

