

3,498 SF AVAILABLE

1500 W 34TH ST

AUSTIN, TX 78703



PROPERTY HIGHLIGHTS

3,498 SF

SIZE

CALL BROKER

RATE

4.57/1,000 SF

PARKING

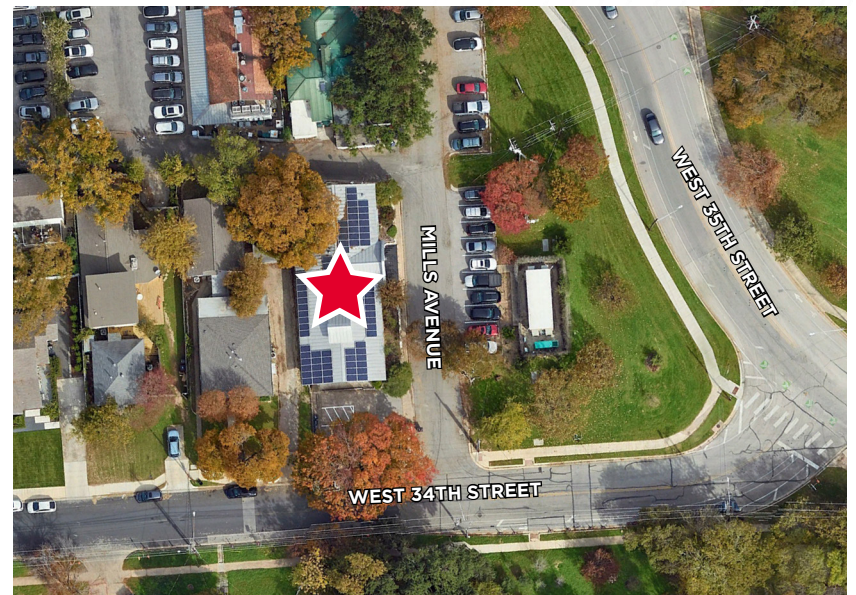
IMMEDIATELY

AVAILABLE

MARCH 31, 2027

LEASE

EXPIRATION DATE



- Highly visible and accessible
- Open lay-out for offices
- Nice interior finish throughout building
- Great restaurants and retail in the neighborhood
- One block from Seton Medical Center
- Zoned LO, which allows medical offices, business offices, agricultural sales and service, and software development

PROPERTY PHOTOS

VIDEO TOUR



Waiting Area



Office Area

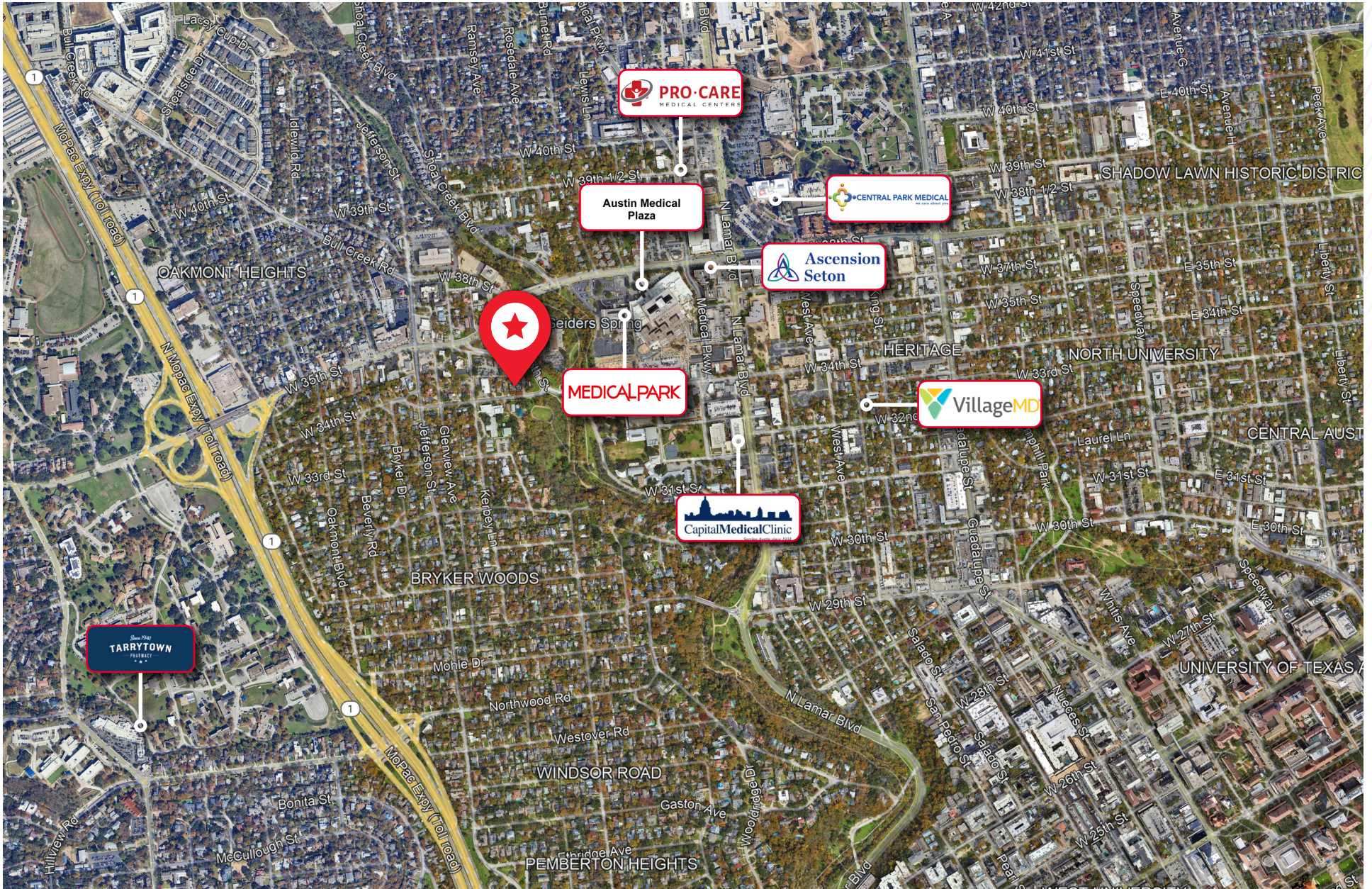


Admin Office



Patient Room

AERIAL MAP



FOR MORE INFORMATION, PLEASE CONTACT:

Holmes Onwukaife

Senior Associate

+1 512 940 7125

holmes.onwukaife@cushwake.com



©2025 Cushman & Wakefield. All rights reserved. The information contained in this communication is strictly confidential. This information has been obtained from sources believed to be reliable but has not been verified. NO WARRANTY OR REPRESENTATION, EXPRESS OR IMPLIED, IS MADE AS TO THE CONDITION OF THE PROPERTY (OR PROPERTIES) REFERENCED HEREIN OR AS TO THE ACCURACY OR COMPLETENESS OF THE INFORMATION CONTAINED HEREIN, AND SAME IS SUBMITTED SUBJECT TO ERRORS, OMISSIONS, CHANGE OF PRICE, RENTAL OR OTHER CONDITIONS, WITHDRAWAL WITHOUT NOTICE, AND TO ANY SPECIAL LISTING CONDITIONS IMPOSED BY THE PROPERTY OWNER(S). ANY PROJECTIONS, OPINIONS OR ESTIMATES ARE SUBJECT TO UNCERTAINTY AND DO NOT SIGNIFY CURRENT OR FUTURE PROPERTY PERFORMANCE.

