

BEACH LINE CITRUS

±1,661 GROSS ACRES | IMPERIAL COUNTY, CALIFORNIA



CONTACT FOR MORE INFORMATION

Bobby Wuertz

bwuertz@landadvisors.com

480.874.4312

CA DRE #01994063

 Land Advisors[®]
ORGANIZATION

480.483.8100 | LandAdvisors.com

OVERVIEW



Located in the Imperial Valley and irrigated by the Imperial Irrigation District, this predominantly contiguous farm is a rare opportunity to purchase a mature lemon orchard with scale.

This farm's location is at the north end of the east highline canal, which is historically known as a frost-free region that is suitable for winter specialty crops as well as permanent crops. This location is also known for being a low wind area that prevents fruit scarring and produces high quality fruit.

The Imperial Valley is in the southeastern lower desert of California and is a vibrant agriculture region of California. This region is typically known for the abundant and strong water rights of the Imperial Irrigation District, along with its capability to grow a variety of row crops, specialty crops, and permanent crops. The regions infrastructure and labor allow for efficient harvest and shipment of crops for domestic and international markets. Combining the properties attributes of water, size, and location, Beach Line Citrus is an excellent opportunity for investment.



PROPERTY DETAILS



LOCATION	Imperial County Imperial Irrigation District Near the Town of Niland, California
SIZE	±1,661 Gross Acres
PRICE	\$8,556,250
TAXES	\$144,087.23 (2023)
ZONING	A-2 (General Agricultural Zone) and S-2 (Open Space/ Preservation), Imperial County, California
INFRASTRUCTURE	There are four irrigation reservoirs, each with drip filter stations. Reservoirs are interconnected by underground pipeline. Drip lines are fitted with micro jet sprinklers.

PLANTINGS

LEMONS	
±78 AC	2010 Plantings
±138 AC	2015 Plantings
±68 AC	2017 Plantings
±68 AC	2019 Plantings
±155 AC	2022 Plantings
±75 AC	2023 Plantings
±581 AC	Total Lemon Acres

PALMS	
±30 AC	Ornamental Palms

OPEN LAND	
±615 AC	Open Cropland
±240 AC	Undeveloped, District Farmland
±213 AC	Remaining Gross Acres

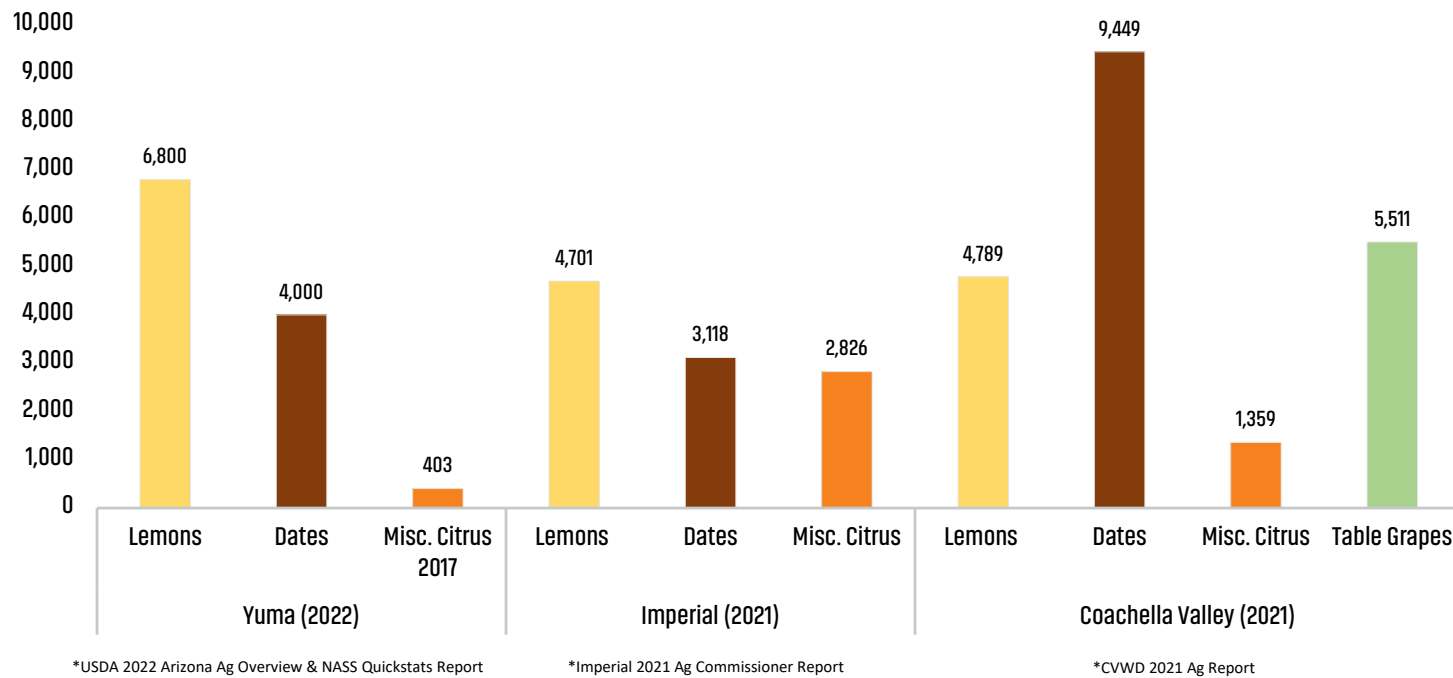


SOUTHWESTERN PERMANENT CROP ACRES



The southwest desert region of the United States offers a unique opportunity for permanent plantings. With some of the earliest and opportunistic harvest windows in the US, this region allows farmers to participate in markets while no other US food producers are able to harvest.

Traditional permanent plantings include lemons, dates, and an assortment of other citrus varieties that all benefit from low frost risk, low rainfall, early heat units, and plentiful irrigation water. The Beach Line Citrus Farm is a unique opportunity to participate in this market with a location suitable for all traditional permanent plantings while also having the capabilities to grow additional crops.

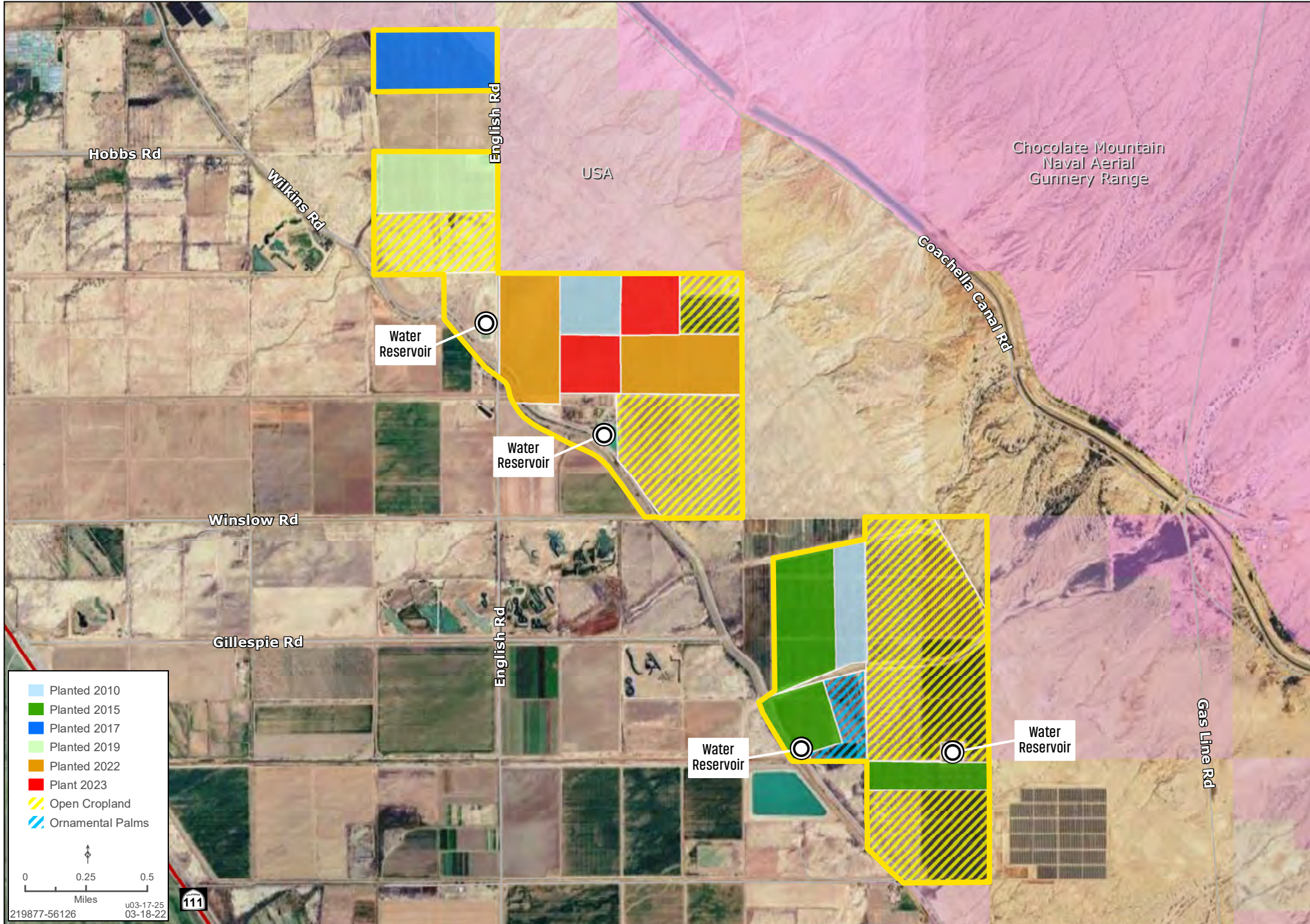


PROPERTY PHOTOS



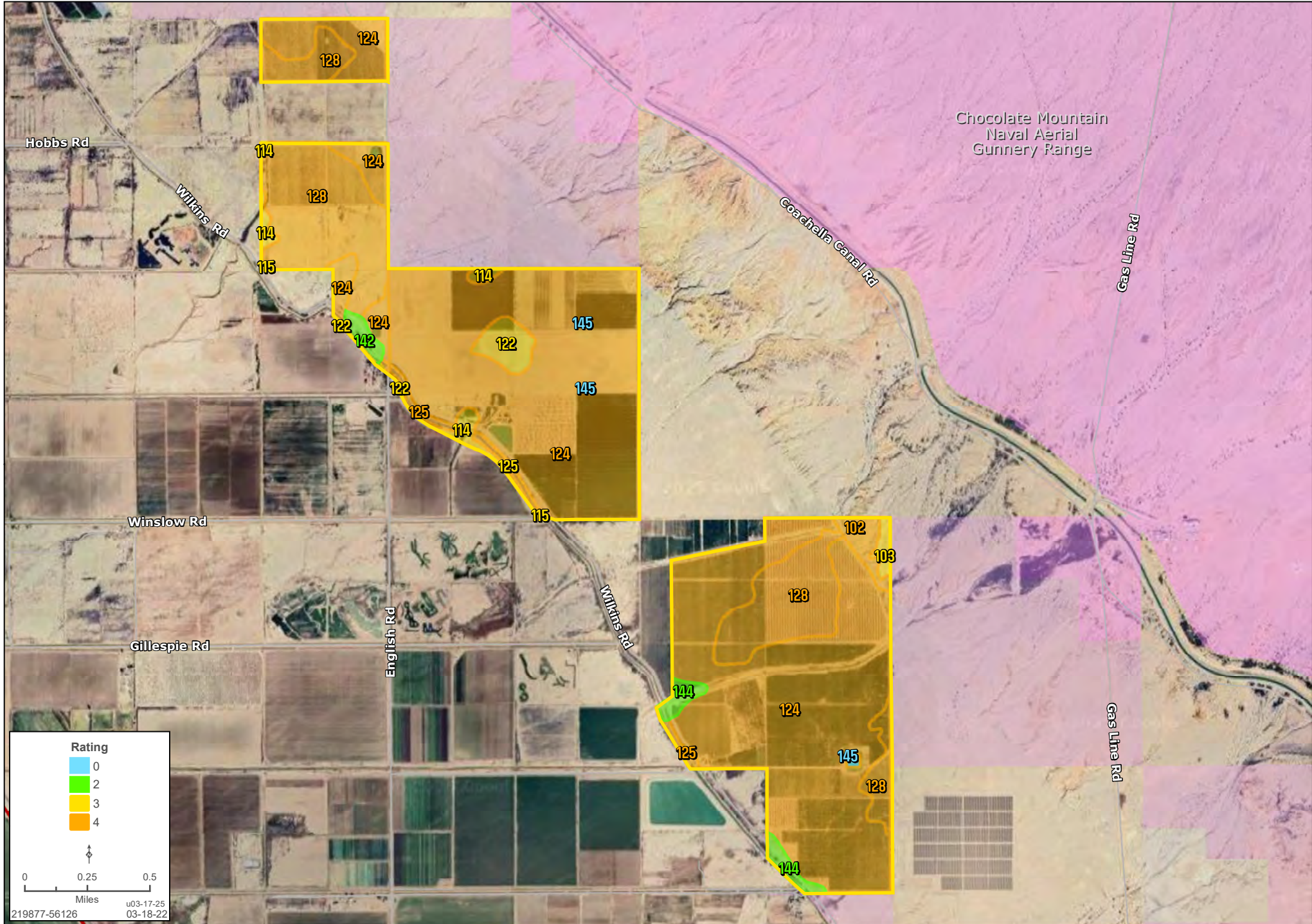
FIELD MAP

Bobby Wuertz | 480.483.8100 | landadvisors.com



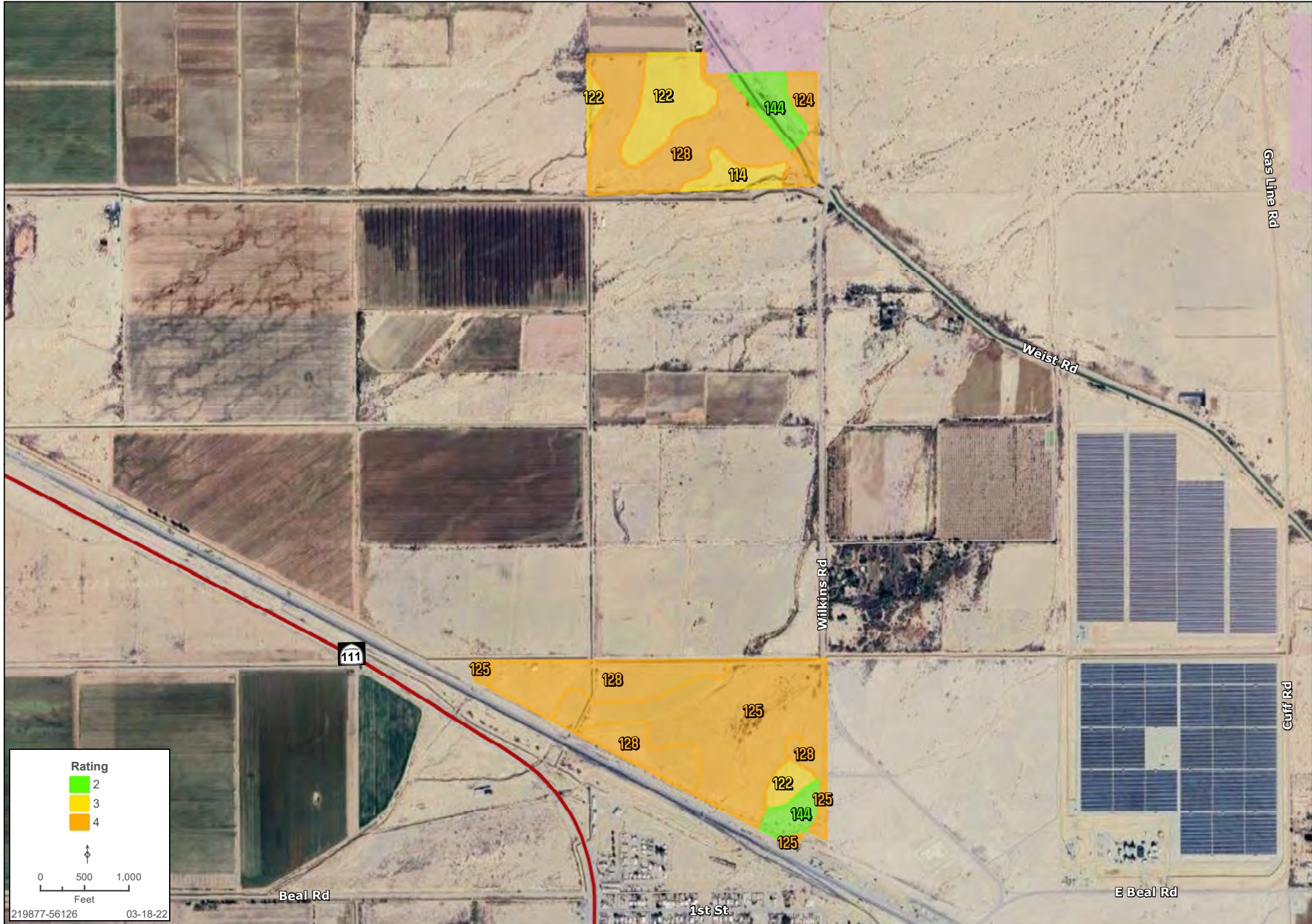
IRRIGATION CAPABILITY CLASS MAP

Bobby Wuertz | 480.483.8100 | landadvisors.com



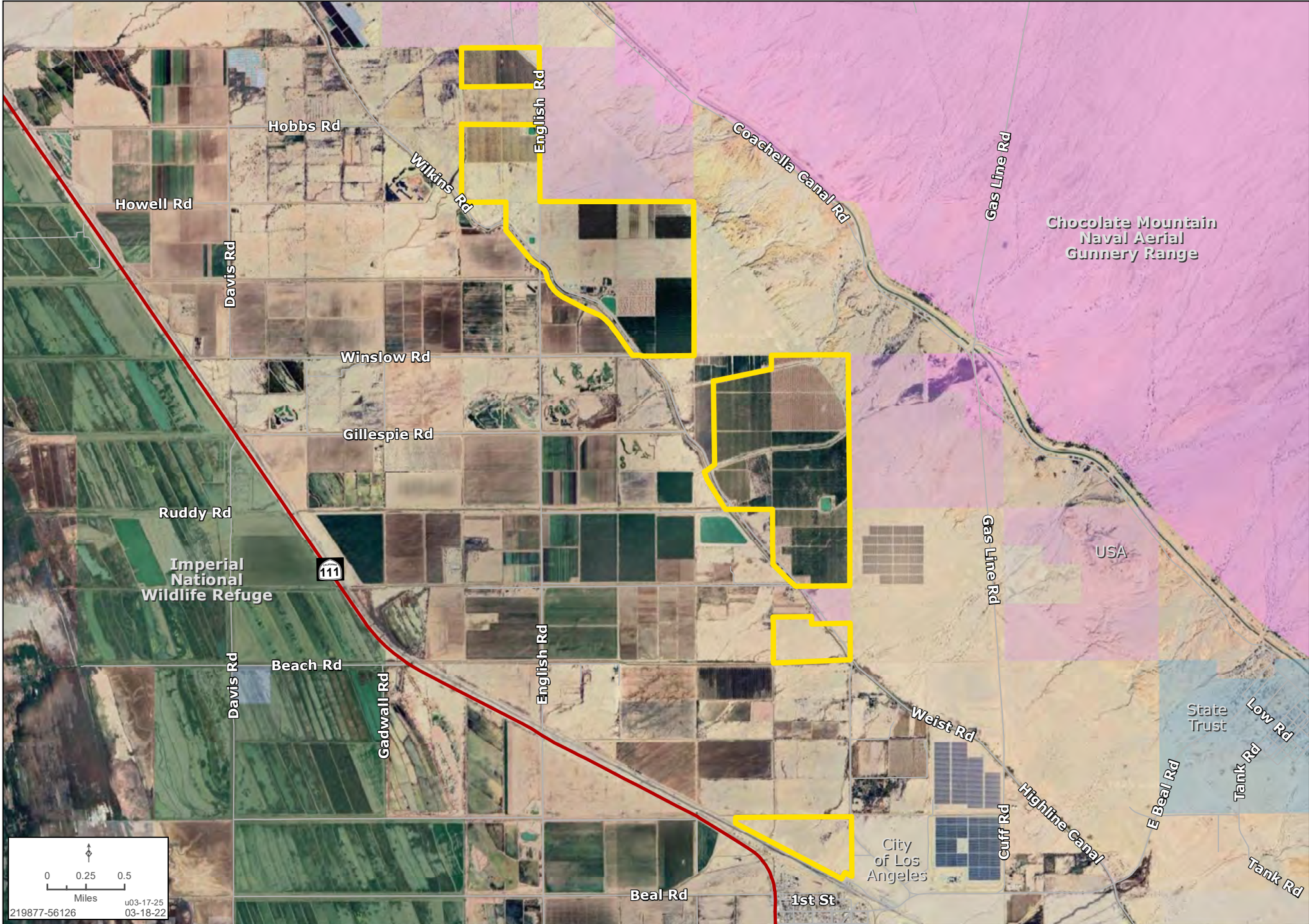
IRRIGATION CAPABILITY CLASS MAP

Bobby Wuertz | 480.483.8100 | www.landadvisors.com



DETAIL MAP

Bobby Wuertz | 480.483.8100 | landadvisors.com



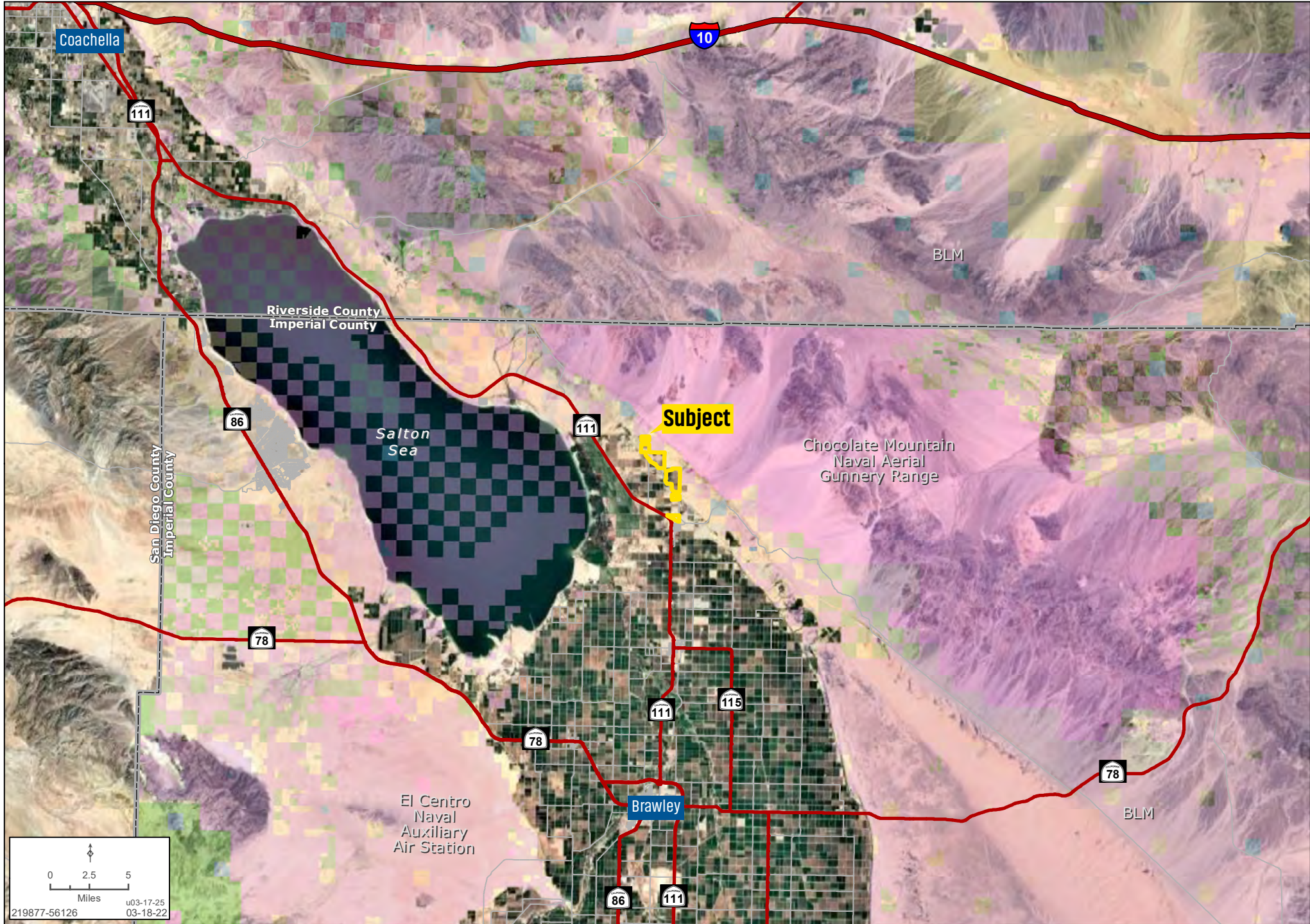
IRRIGATION CAPABILITY CLASS & SOIL TYPES

MAP UNIT	MAP UNIT NAME	RATING	ACRES I AOI	PERCENT OF AOI
102	Badland		18.0	1.1%
103	Carsitas Gravelly Sand	1	7.3	0.4%
114	Imperial Silty Clay, Wet	3	27.8	1.6%
115	Imperial-Glenbar Silty Clay Loams Complex, 0 to 2 Percent Slopes, Wet	3	1.1	0.1%
122	Meloland Very Fine Sandy Loam, Wet	3	49.8	2.9%
124	Niland Gravelly Sand	1	1,082.9	63.8%
125	Niland Gravelly Sand, Wet	1	81.5	4.8%
128	Niland-Imperial Complex, 0 to 2 Percent Slopes, Wet	1	375.7	21.1%
142	Vint Loamy Very Fine Sand, Wet	2	9.3	0.5%
144	Vint and Indio Very Fine Sandy Loams Undifferentiated Group, 0 to 2 percent slopes, Wet	2	33.0	1.9%
145	Water		2.6	0.2%
SUBTOTALS FOR SOIL SURVEY AREA			1,688.9	99.5%
TOTALS FOR AREAS OF INTEREST			1,697.6	100.0%



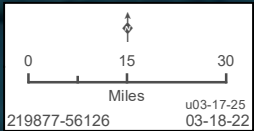
REGIONAL MAP

Bobby Wuertz | 480.483.8100 | landadvisors.com



LOCALITY MAP

Bobby Wuertz | 480.483.8100 | landadvisors.com



The information in this document and any attachments regarding any property has been obtained from sources believed reliable, but we have not verified it and we make no guarantee, warranty, or representation as to its accuracy or completeness, and we do not undertake to update or correct any of the information presented. Any projections, opinions, assumptions, or estimates ("forward-looking statements") used are, for example, only and do not represent the current or future performance of the property and actual results may differ materially from such forward-looking statement due to, without limitation, changes in: (i) the market, (ii) governmental legal, regulatory or permitted use changes, and (iii) other factors. You and your advisors should conduct a careful, independent investigation of the property to determine to your satisfaction the property's suitability for your needs. Any reliance on this information is at your own risk and is subject to change, prior sale or complete withdrawal. CAImperial219877 - 05.14.2026.



[LandAdvisors.com](https://www.LandAdvisors.com)