

Mountain Medical Arts Building

5323 South Woodrow Street, Murray, UT 84107

FLOOR 1



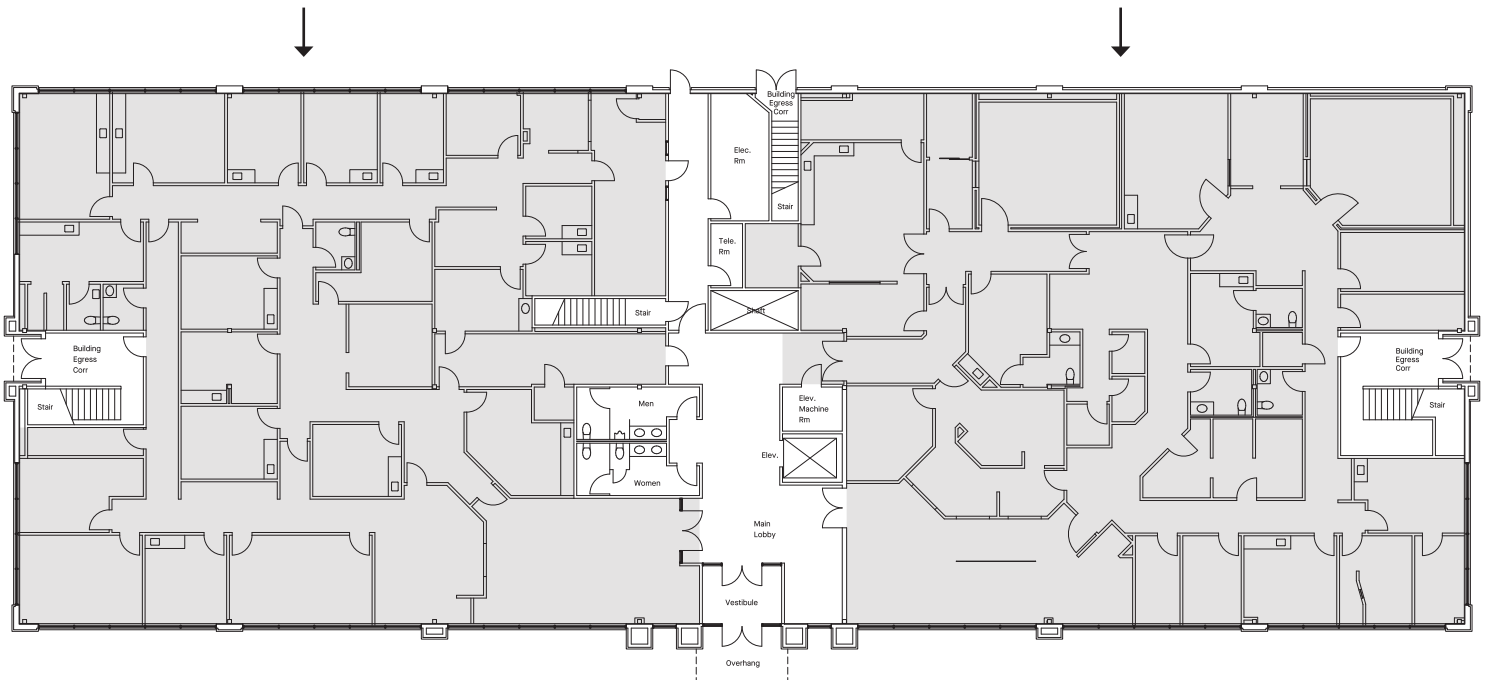
AVAILABLE



LEASED

SUITE 101-102
LEASED

SUITE 100
LEASED



Mountain Medical Arts Building

5323 South Woodrow Street, Murray, UT 84107

FLOOR 2



AVAILABLE



LEASED

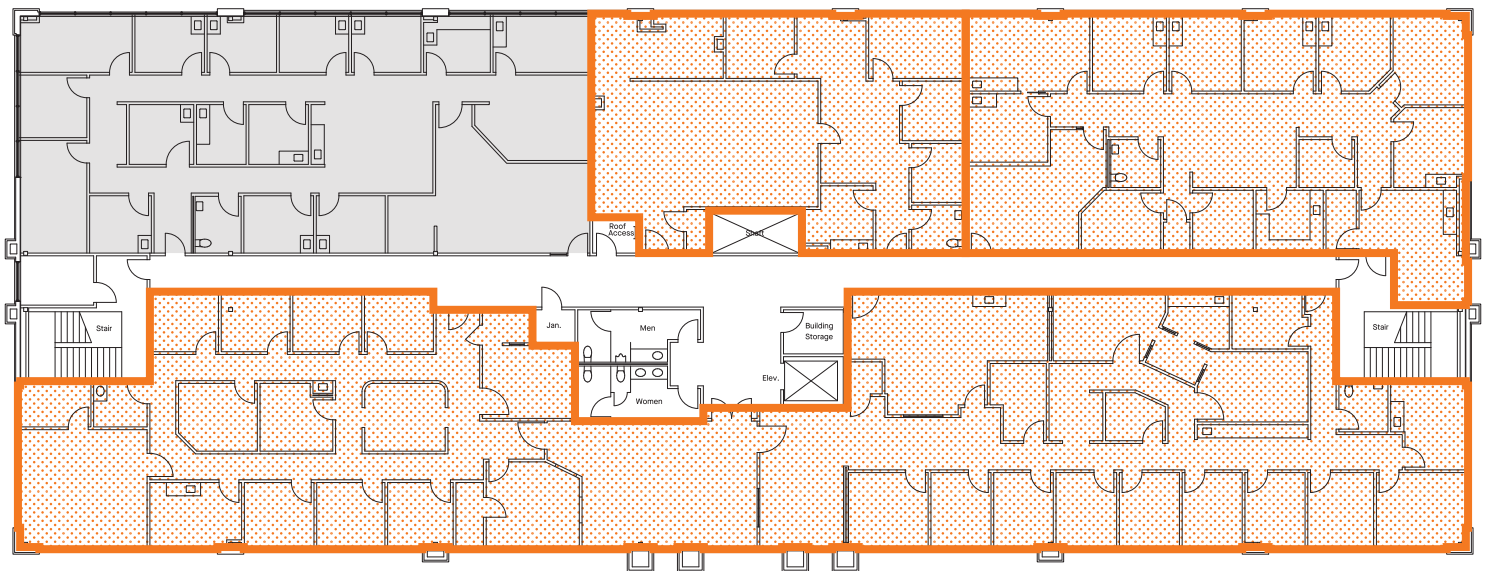
SUITE 201
LEASED



SUITE 204
2,289 SF



SUITE 203-205
3,388 SF



SUITE 200AB
8,666 SF