

Retail & Salon Suites

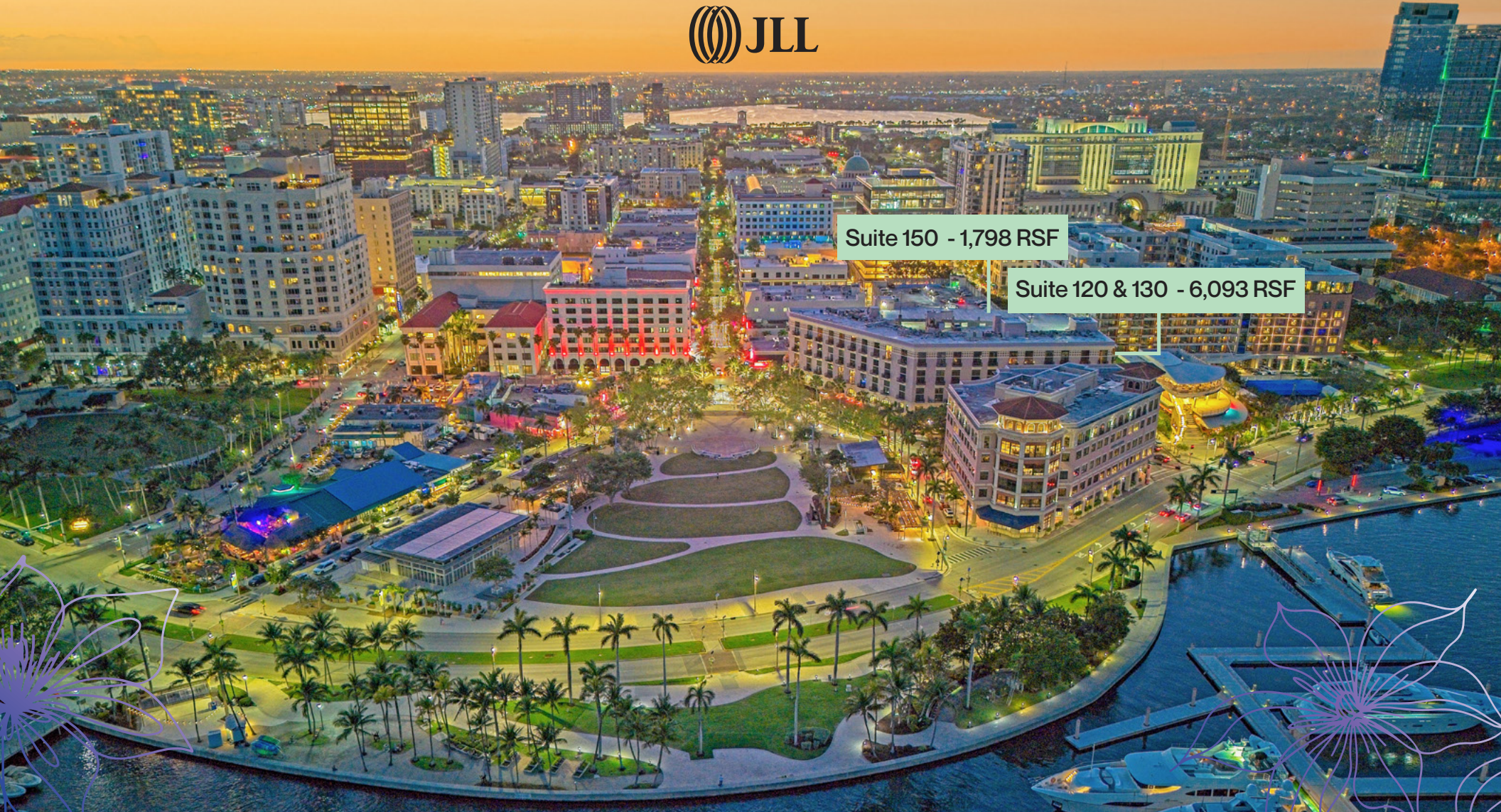
For Lease on Clematis St.

✿ 101 N. Clematis Street, West Palm Beach, FL 33401



Suite 150 - 1,798 RSF

Suite 120 & 130 - 6,093 RSF



Property Details

Located in the heart of the Clematis District

- 1,798 RSF former yacht showroom (Suite 150)
- 6,093 RSF total
 - Can be demised into two spaces:
 - 2,593 RSF (Suite 120)
 - 3,500 RSF (Suite 130)
- Underneath 101 Lofts residential building with 60 units and next to 1 N Clematis office building with 90,710 SF total
- On-site valet parking
- Prime location at the tip of the highly-celebrated Clematis Street restaurant row with views of the Intracoastal Waterway and Palm Beach Island
- Close proximity to the Brightline Station, Rosemary Square, West Palm Beach Amphitheater, Palm Beach Island and multiple beaches
- Restaurants on Clematis include Pistache, Bodega, 123 Datura, Oku Sushi (coming soon), Bristol's Burgers (coming soon), Starbucks, Batch, Spazio, Lynora's, Elisabetta's Ristorante, Pubbelly, Waxins (coming soon), Rocco's Tacos and more



101 North Clematis Street, West Palm Beach, FL
Suite 150 - 1,798 RSF

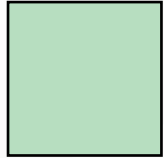


101 North Clematis Street, West Palm Beach, FL
Suite 120 & 130 - 6,093 RSF



Floor Plan

101 N Clematis St // Banyan Blvd, Suite 150



Available

Suite 150 Specifics

- 1,798 RSF total
- Open Floor Plan
- Former Yacht Showroom

On



Banyan Blvd

&



Narcissus Ave

Sof

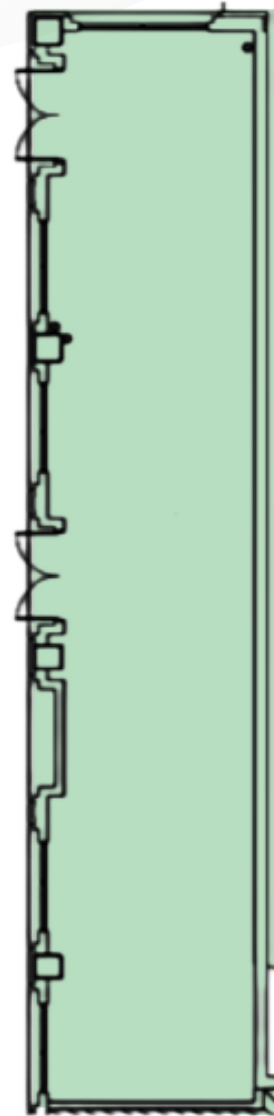


Lantana Ave

Nof

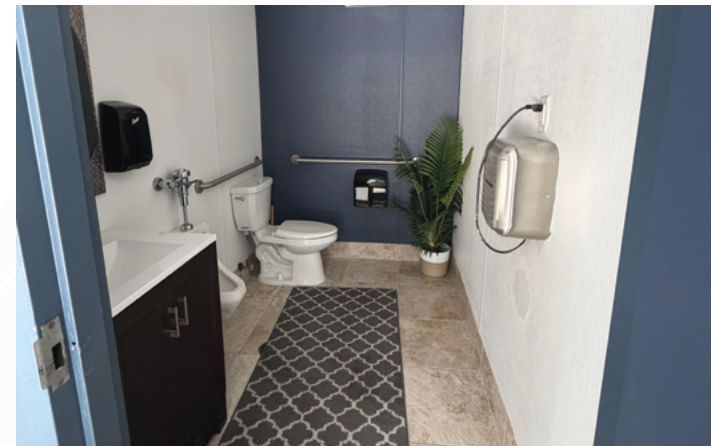


Clematis St



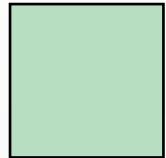
Narcissus Ave

Banyan Blvd



Floor Plan

101 N Clematis St // Banyan Blvd, Suite 120&130



Available

Suite 120 & 130 Specifics

- 6,093 RSF total
- Turnkey Delivery

On



Banyan Blvd

&



Lantana Ave

Sof

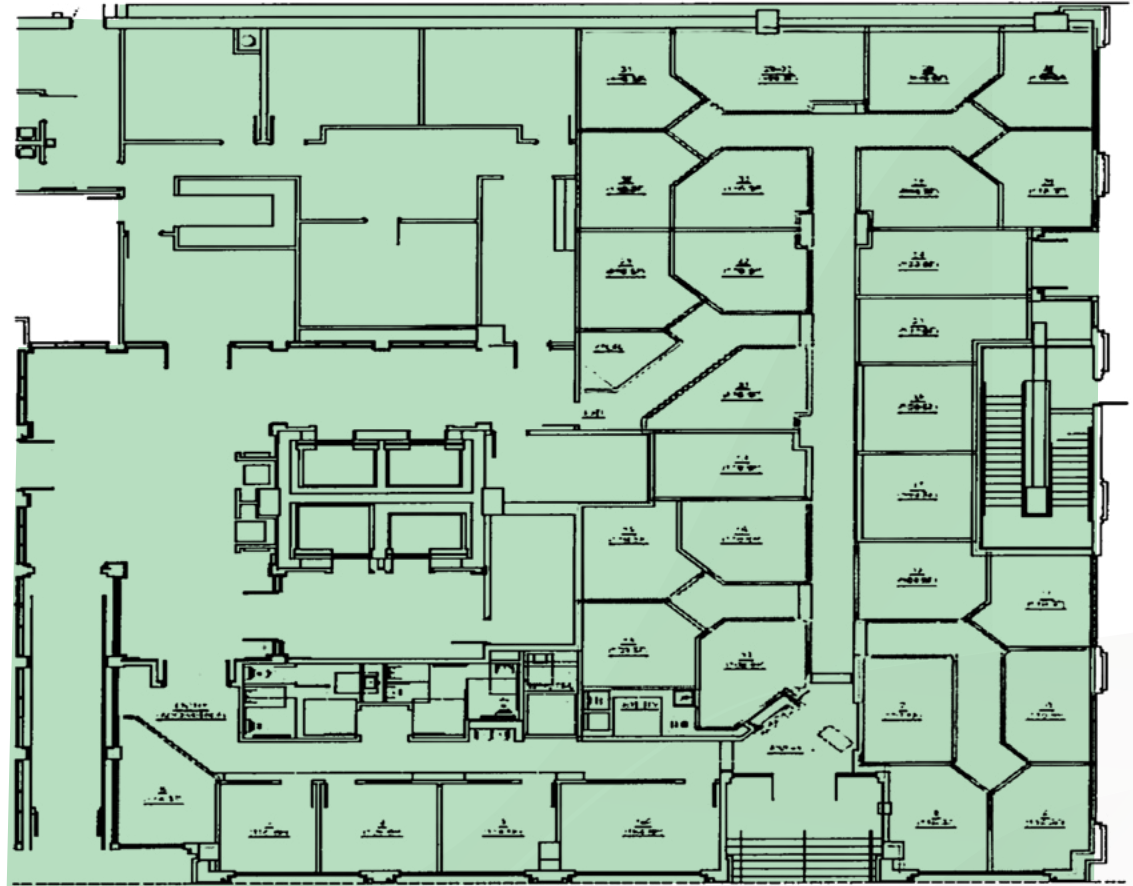


Narcissus Ave

Nof



Clematis St



Lantana Blvd

Banyan Blvd



Clematis
Street

The Historical Entertainment District of Downtown West Palm Beach

A cultural & social epicenter: Clematis Street is more than just a commercial district; it's the West Palm Beach epicenter. It serves as a central artery of WPB, bustling with shops, restaurants and cultural venues. The street's vibrant atmosphere is magnetic, offering an eclectic mix of art, history and dining experiences, from casual eateries to upscale restaurants.

Three-mile demographics

86,294 Population
count

34,893 Household
count

\$143,028 Avg. household
income

122,814 Daytime
population



Area Retailers

Welcome to Downtown West Palm Beach

- Clematis Parking Garage
- Clematis Pizza
- Clematis Street Market
- Flamango Vending
- Hullabaloo
- Kapow Noodle Bar
- O'Sheas Irish Pub
- PetezPop
- Qargo Coffee

- UNITED STATES POSTAL SERVICE
- AG Hair & Beauty Loft
- Blue Mountain Coffee
- Keese's Simply Delicious
- La Vella Nails & Beauty
- Ristorante Santucci
- SPHEROID Sculpture
- The Greenline Market
- Urban Design Studio

- F45 TRAINING
- The Crossfit Squad
- Ventureworx
- Brightline Parking

- Best Model Hair Salon
- Bravado Health
- Dance Hub
- Diamond Skin & Wax
- ENZO Hair Salon
- Jimmy John's
- Kabuki Sushi
- Leila Restaurant
- Palm Beach Design
- Silver Salons Spas
- Sushi Yama
- Temanatu Kava Bar
- The Market on Clematis
- Track Fit

- AKA West Palm
- Athena Med Spa
- Ballet Florida
- Bella B Salon
- Body+Beauty Lab
- Canopy by Hilton
- Glam Eyelash & Manicure
- So Flo Glows
- The Blind Monk
- The Pilates Look
- a.market on Olive

- 335 Capone
- Batch New Southern
- Carmela Coffee
- Chase Bank
- Duffy's Sports Grill
- Grease Burger
- Hideout Kava & Tea
- Lindburgers Express
- Lynora's WPB

- Oh My Chocolates
- Paneterie
- Provident Jewelry
- Rivales Taquera
- Roxy's Pub
- Sourbon Kitchen
- Spazio
- The Lab
- Top of the Box

- Elisabetta's Ristorante
- Proper Grit
- Spruzze
- The Ben Autograph Collection
- Wells Fargo

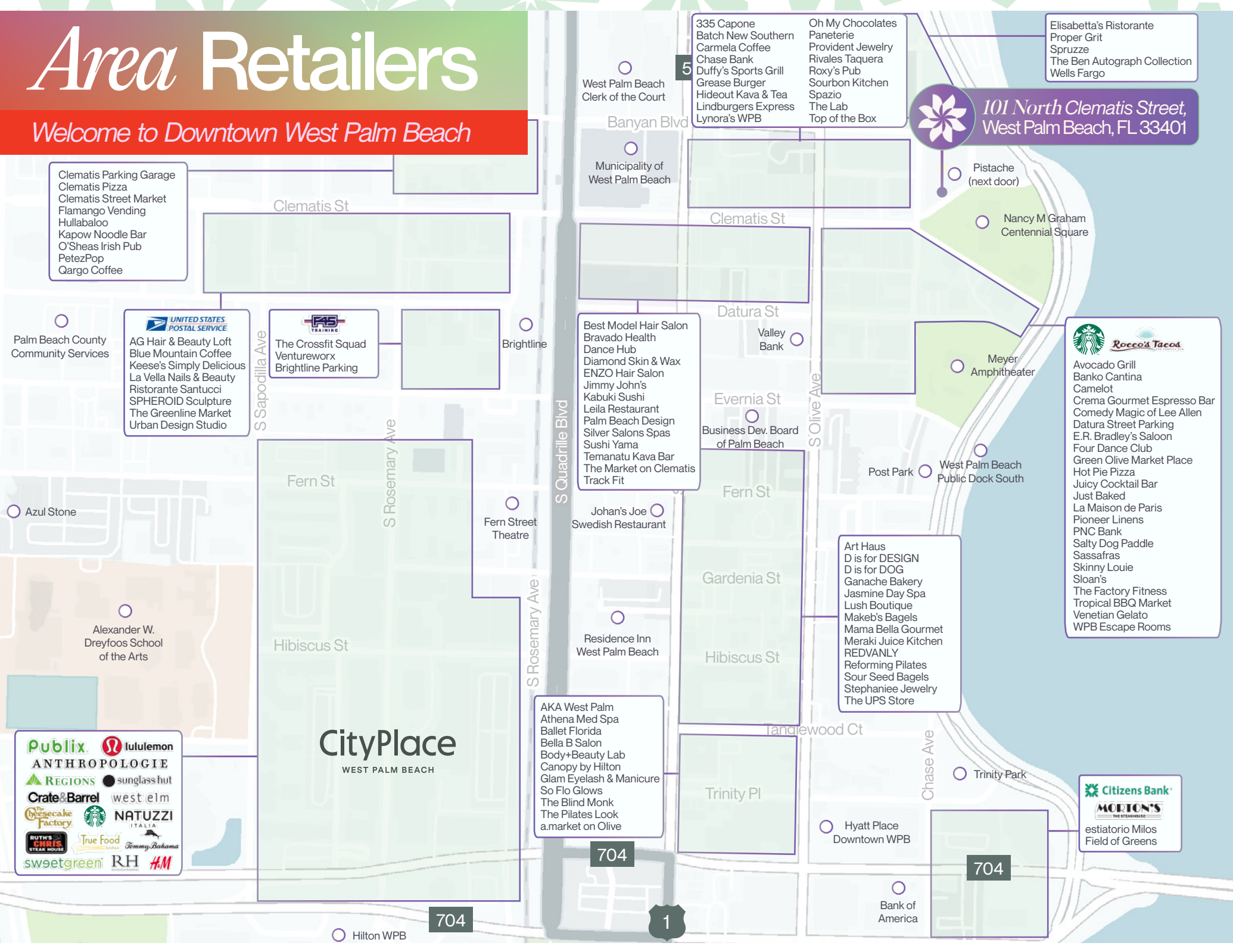
101 North Clematis Street, West Palm Beach, FL 33401

- Starbucks
- Rocco's Tacos
- Avocado Grill
- Banko Cantina
- Camelot
- Crema Gourmet Espresso Bar
- Comedy Magic of Lee Allen
- Datura Street Parking
- E.R. Bradley's Saloon
- Four Dance Club
- Green Olive Market Place
- Hot Pie Pizza
- Juicy Cocktail Bar
- Just Baked
- La Maison de Paris
- Pioneer Linens
- PNC Bank
- Salty Dog Paddle
- Sassafras
- Skinny Louie
- Sloan's
- The Factory Fitness
- Tropical BBQ Market
- Venetian Gelato
- WPB Escape Rooms

- Art Haus
- D is for DESIGN
- D is for DOG
- Ganache Bakery
- Jasmine Day Spa
- Lush Boutique
- Makeb's Bagels
- Mama Bella Gourmet
- Meraki Juice Kitchen
- REDVANLY
- Reforming Pilates
- Sour Seed Bagels
- Stephaniee Jewelry
- The UPS Store

- Publix
- lululemon
- ANTHROPOLOGIE
- REGIONS
- sunglass hut
- Crate & Barrel
- west elm
- cheesecake factory
- NATUZZI ITALIA
- RUTH'S CHRIS STEAK HOUSE
- True Food Kitchen
- Tommy Bahama
- sweetgreen
- RH
- H&M

CityPlace
WEST PALM BEACH



For more information, please contact:



Retail contacts

Jonathan Rosen Daniel Gardner Michael Barashick
jonathan.rosen@jll.com daniel.gardner@jll.com michael.barashick@jll.com
954 729 1074 904 534 8785 561 444 6489

Office contacts

Kevin Probel Kevin McCarthy
kevin.probel@jll.com kevin.mccarthy@jll.com
561 676 2131 561 292 2668

Suite 150 - 1,798 RSF

Suite 120 & 130 - 6,093 RSF

Although information has been obtained from sources deemed reliable, JLL does not make any guarantees, warranties or representations, express or implied, as to the completeness or accuracy as to the information contained herein. Any projections, opinions, assumptions or estimates used are for example only. There may be differences between projected and actual results, and those differences may be material. JLL does not accept any liability for any loss or damage suffered by any party resulting from reliance on this information. If the recipient of this information has signed a confidentiality agreement with JLL regarding this matter, this information is subject to the terms of that agreement. ©2026. Jones Lang LaSalle Brokerage, Inc. All rights reserved.