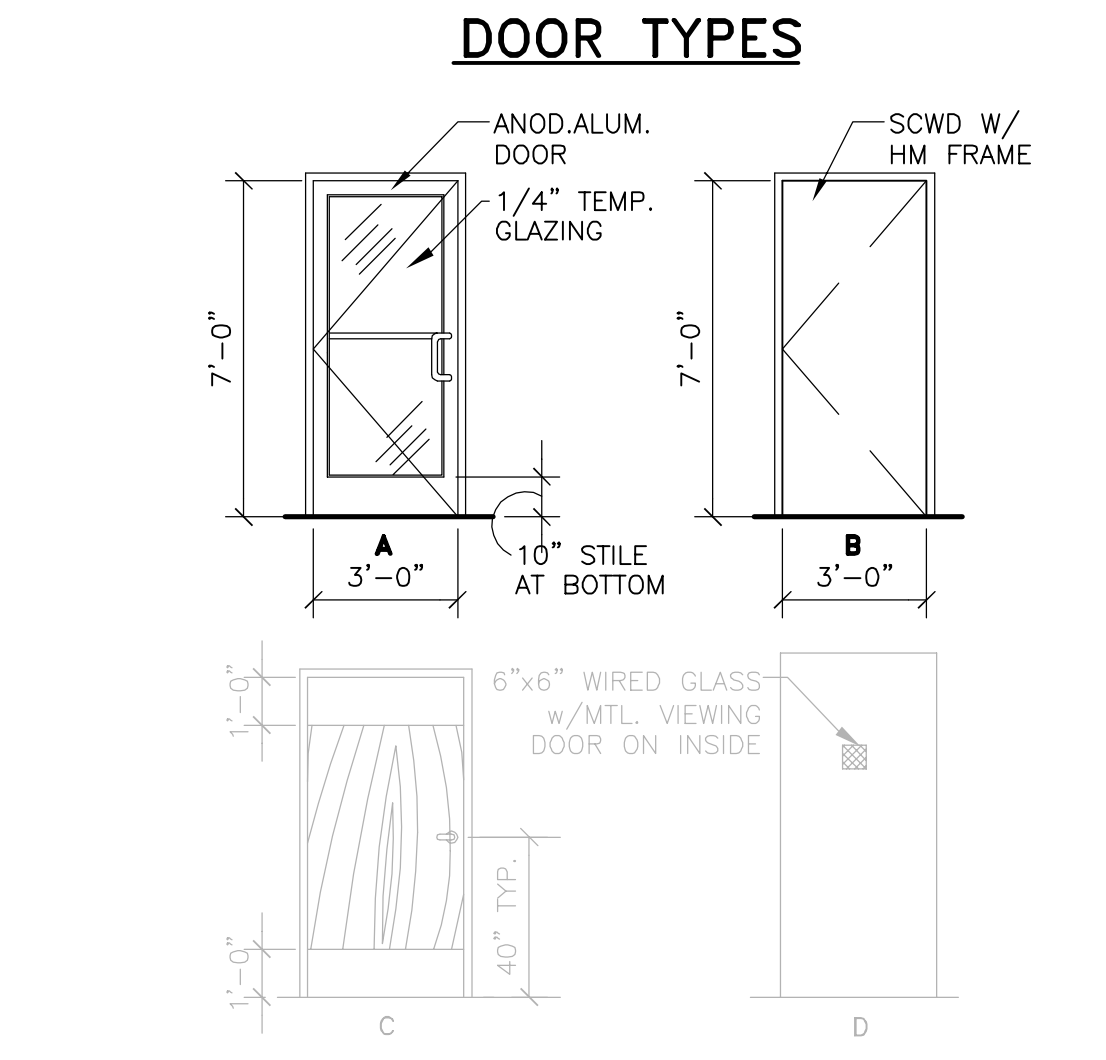
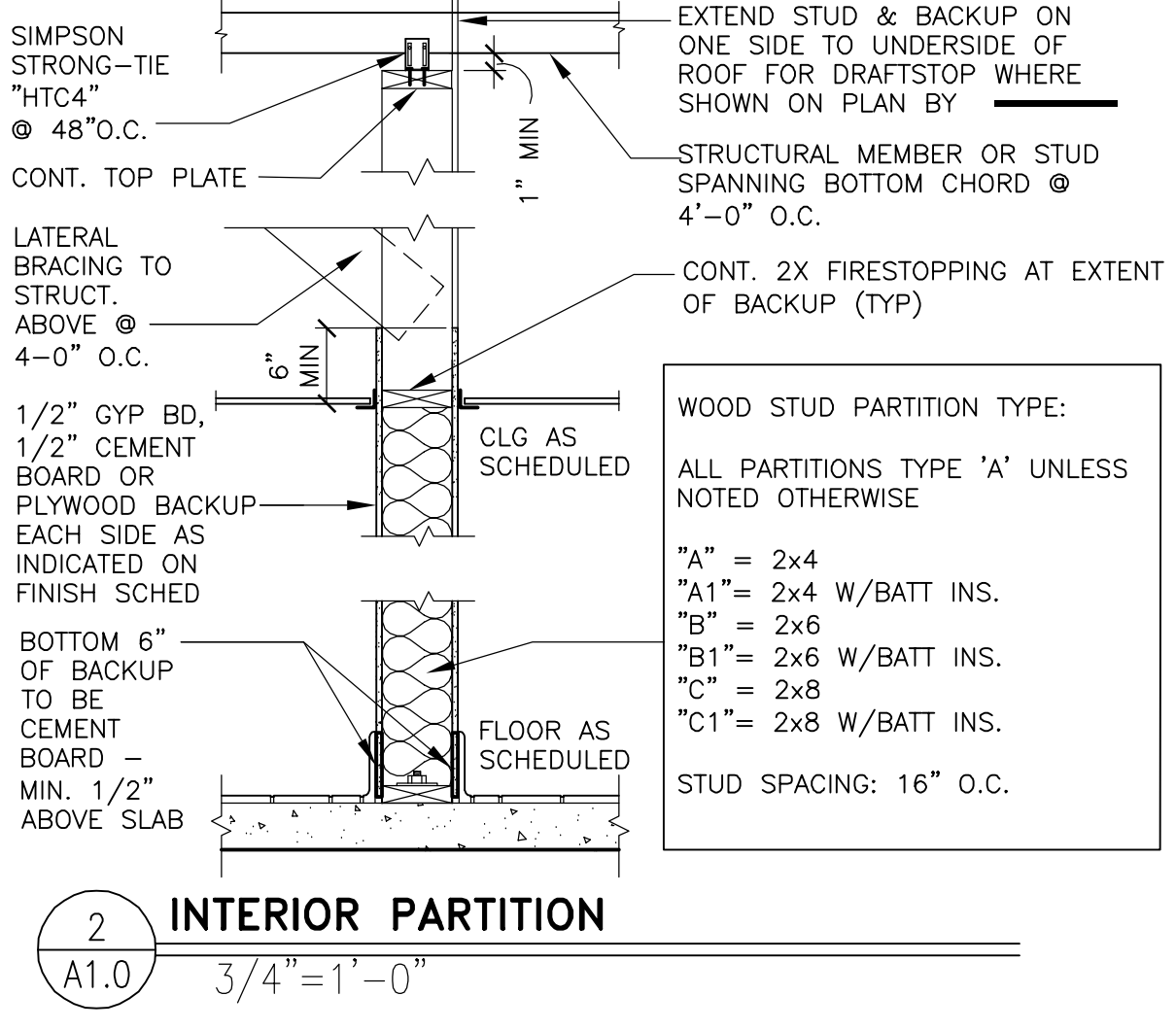


KEY NOTES

- C NEW METAL CANOPIES
- GR EXISTING GUARDRAIL - PAINT TO MATCH BUILDING FINISHES
- RL ROOF LADDER (EXISTING) PAINT TO MATCH BUILDING FINISHES - PROVIDE NEW BLOCKING
- S SIGNAGE - BY OTHERS - SEE ELEVATIONS, REUSE EXISTING WHERE POSSIBLE
- SF NEW STOREFRONT SYSTEM - SEE 3/A3.0 FOR NOTES - SEE ELEVATIONS
- ST NEW CULTURED STONE VENEER, SEE NOTES ON A3.0 AND ELEVATIONS
- T NEW TRELIS SYSTEM ABOVE - SEE 3/A3.0 FOR NOTES - SEE ROOF PLAN FOR DIMENSIONS



- DOOR HARDWARE (GC TO REPLACE ALL DOOR HARDWARE)**
- GENERAL NOTES:**
- ALL EXIT DOORS SHALL BE KEYLESS IN THE DIRECTION OF EGRESS.
 - THE OPENING FORCE OF ALL EXT. PUSH/PULL DOORS SHALL NOT EXCEED 8 1/2 LBS.
 - THE OPENING FORCE OF ALL INTERIOR PUSH/PULL DOORS SHALL NOT EXCEED 5 LBS.
 - PROVIDE PANIC HARDWARE FOR ALL EXTERIOR DOORS AS NOTED ON THE DOOR SCHEDULE.
 - ALL DOOR HARDWARE SHALL NOT REQUIRE TIGHT GRASPING, TIGHT PINCHING OR TWISTING OF THE WRIST TO OPERATE.
- DOOR #1**
- CLOSER: LCN 4021 x 18
 - HINGES: OFFSET PIVOT ANSI -A-156.4 GRADE 1; PROVIDE EXPOSED PARTS OF CAST ALUMINUM ALLOY, AS SUPPLIED BY DOOR MANUFACTURER.
 - PUSH/PULL HANDLE: KAWNEER #CO-9 OR HAGER PUSH/PULL SET 164D/V/B.
 - PANIC HARDWARE: ADAMS RITE MFG. CO. 8800 SERIES WITH OUTSIDE CYLINDER ON 1" 1A DOOR ONLY (FINISH TO MATCH STOREFRONT DOOR)
 - THRESHOLD: NATIONAL GUARD PRODUCTS, INC. SADDLE TYPE THRESHOLD 325, 36" WIDE x 1/2" RISE (ADA ACCESSIBLE).
 - WEATHER STRIPPING: PROVIDE COMPRESSION WEATHER STRIPPING AGAINST FIXED STOPS. AT OTHER EDGES PROVIDE SLIDING WEATHER STRIPPING RETAINED IN ADJUSTABLE STRIP MORTISED INTO DOOR EDGE. PROVIDE EPDM OR VINYL GASKET WEATHER STRIPPING IN BOTTOM DOOR RAIL ADJUSTABLE FOR CONTACT W/ THRESHOLD.
 - SIGN: MOUNT ONTO DOOR, TO READ "THIS DOOR MUST REMAIN UNLOCKED WHENEVER THE BUILDING IS OCCUPIED/DURING BUSINESS HOURS."
- DOOR #10**
- CLOSER: LCN 1521 PULL SIDE MOUNTED.
 - HINGES: HAGER -BB1279 4 1/2"x4 1/2" - 1 1/2 PAIR OR EQUAL.
 - LOCKSET: SCHLAGE ND-D405 RHO, US260 FINISH.
 - KICK PLATES: US280 SATIN, (2) ALUM. 8" x 34" x 18 GA.
 - DOOR SILENCERS: HAGER, QUANTITY = 3
 - SAFETY GUARDS: FINGER SAFE MK1A OPEN HINGE SIDE AND MK1B CLOSED HINGE SIDE OF DOOR.
 - TOE GUARD 202 NA - ALUM (202 N DKB-BRONZE)



GENERAL DOOR NOTES:

- GC TO INSTALL ACCESSIBILITY DOOR SIGNS WHERE REQD. BY LOCAL CODES - SEE GENERAL NOTE 4, SHEET A1.0
- DETEX ALARM CONTACT SWITCHES SHALL BE RECESSED INTO THE TOP OF THE DOOR & HOLLOW METAL FRAME ABOVE.
- DOORS, DOOR FRAMES, & HARDWARE FOR DOORS 5, 6, 6A, 7, & 8 SUPPLIED BY: UNIVERSAL MANUFACTURING 1-800-821-1414.
- INSTALL COUNTERSUNK SHEET METAL SCREWS ON THE VERTICAL STOPS OF DOORS #1, 2, 3, 3A, & 4. USE FIVE SCREWS PER STOP WITH COLOR TO MATCH STOP.
- DOOR 9 SUPPLIED BY FREEZER/COOLER MANUFACTURER
- SEE ELEVATIONS AND WALL SECTIONS

DOOR SCHEDULE

MARK	DOOR MATERIAL	SIZE	TYPE	FRAME
1	ALUM.	3'-0"x7'-0"x1 3/4"	A	ALUM. (NOTE 6)
10	S.C. WOOD	3'-0"x6'-8"x1 3/4"	B	H.M. 2" JAMB & HEAD

- GENERAL NOTES**
- SEE 3/A3.0 FOR EXTERIOR WALL ASSEMBLY TYPES.
 - SEE EXTERIOR ELEVATIONS FOR WINDOW TYPES
 - SEE SITE PLAN FOR SIDEWALKS, RAMPS, ETC.
 - GC TO PROVIDE ADA SIGNAGE PACKAGE AND INSTALL SIGNS AT LOCATIONS AND POSITIONS INDICATED IN PACKAGE OR AS REQUIRED BY LOCAL CODES. SIGNAGE PACKAGE SUPPLIED BY: FORREST PERMA-SIGN 1-800-214-8765 9292 1ST ST., BOX 588 www.forrestpermasigns.com NEW ROCHELLE, NY 10802
- SYMBOL LEGEND**
- 7 DOOR TAG - SEE DOOR SCHEDULE
 - X KEY NOTE
 - EXISTING WALLS TO REMAIN
 - NEW 2X WOOD FRAMING, ATTACH TO EXISTING EXTERIOR WALLS AT NEW ARCADE (FOR INTERIOR WALLS 2X WOOD OR METAL FRAMING CAN BE USED, GC'S DISCRETION)
 - EXISTING WALLS, WINDOW, AND/OR FIXTURES TO BE REMOVED, SEE DEMO PLAN

McDonald's USA, LLC

2011 McDonald's USA, LLC
 DON J. RORSCHACH
 LICENSED ARCHITECT
 A5903
 SIGNED/SEALED ON 09/25/12

513 MAIN STREET, SUITE 200
 FORT WORTH, TEXAS 76102
 817.820.0433 or 817.705.3387 c

PREPARED FOR: McDonald's USA, LLC

DRAWN BY: RDOUE
 ISSUE DATE: 2012
 STD: 11-0000

REVIEWED BY: USRD TEAM
 DATE ISSUED: 2012

TITLE: LTRS MAJOR REMODEL PROGRAM

DESCRIPTION: CONSTRUCTION DOCUMENTS

ROOUE PROJECT 11-0107

SHEET NO: 035-0033

ISSUE DATE: 07/20/12

A1.0
 FLOOR PLAN

CONTRACT NO: 830 NORTH ELM PLACE, BROKEN ARROW, OK