

PERFECT FOR OWNER-USER



COLDWELL BANKER
COMMERCIAL
REALTY

**FOR SALE - 5,750 SQUARE FEET
IN LOS ANGELES**



ZONED COMMERCIAL MANUFACTURING

SIGNALIZED CORNER BUILDING WITH 2 GROUND LOADING DOORS

1140 S Ferris Ave, Los Angeles, CA 90022

OFFERING SUMMARY

ADDRESS	1140 S Ferris Avenue Los Angeles, CA 90022
BUILDING SF	+/- 5,750 SF
LAND SF	+/- 5,563 SF
YEAR BUILT	1954
APN	5245-007-001
ZONING	Commercial Manufacturing

FINANCIAL SUMMARY

PRICE	\$1,380,000
-------	-------------

DEMOGRAPHICS	1 MILE	3 MILE	5 MILE
2025 Population	40,739	244,153	729,700
2025 Median HH Income	\$68,178	\$71,909	\$70,856
2025 Average HH Income	\$86,324	\$92,215	\$94,953

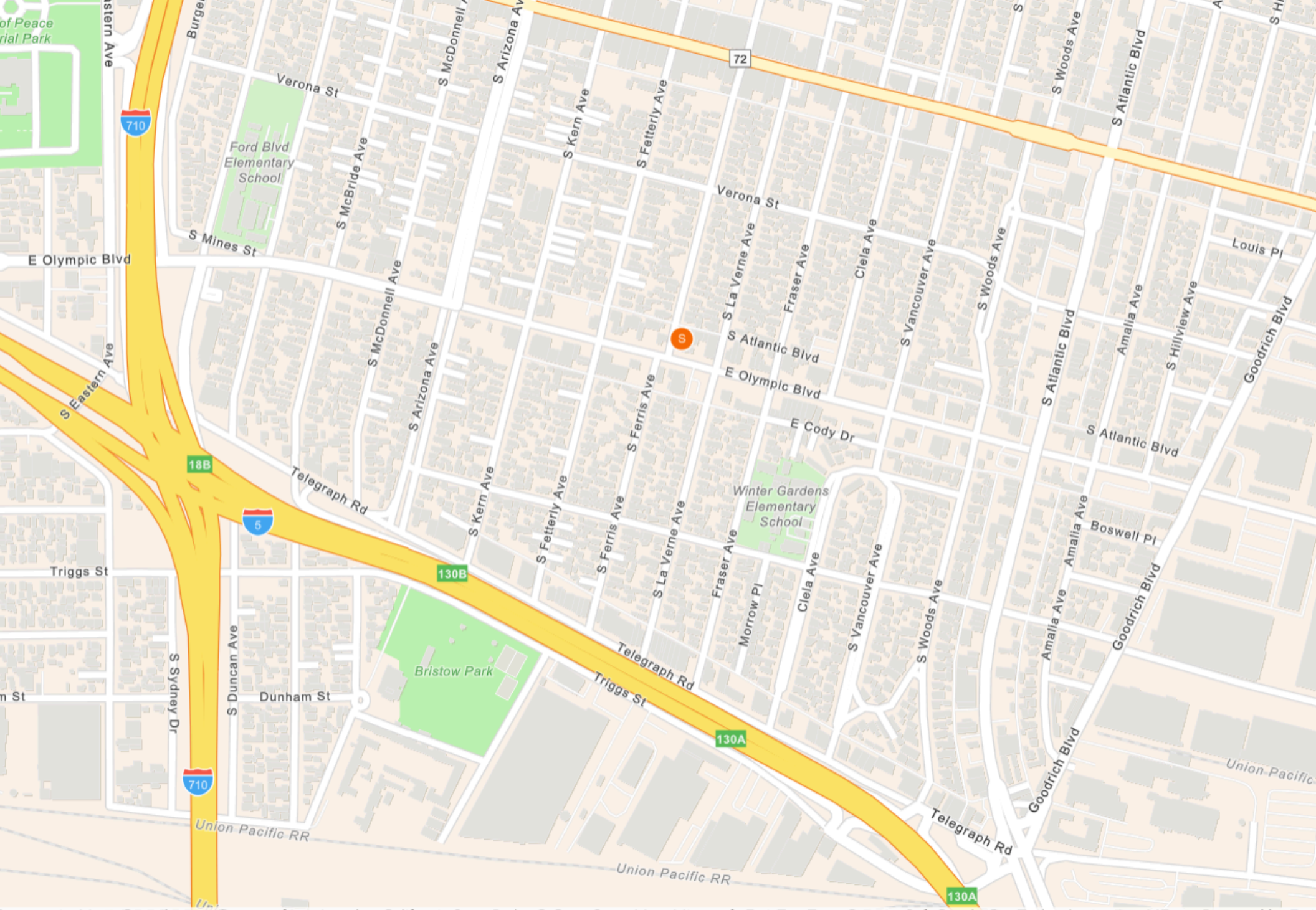


PROPERTY DESCRIPTION

Prime Industrial Opportunity – \$1,380,000

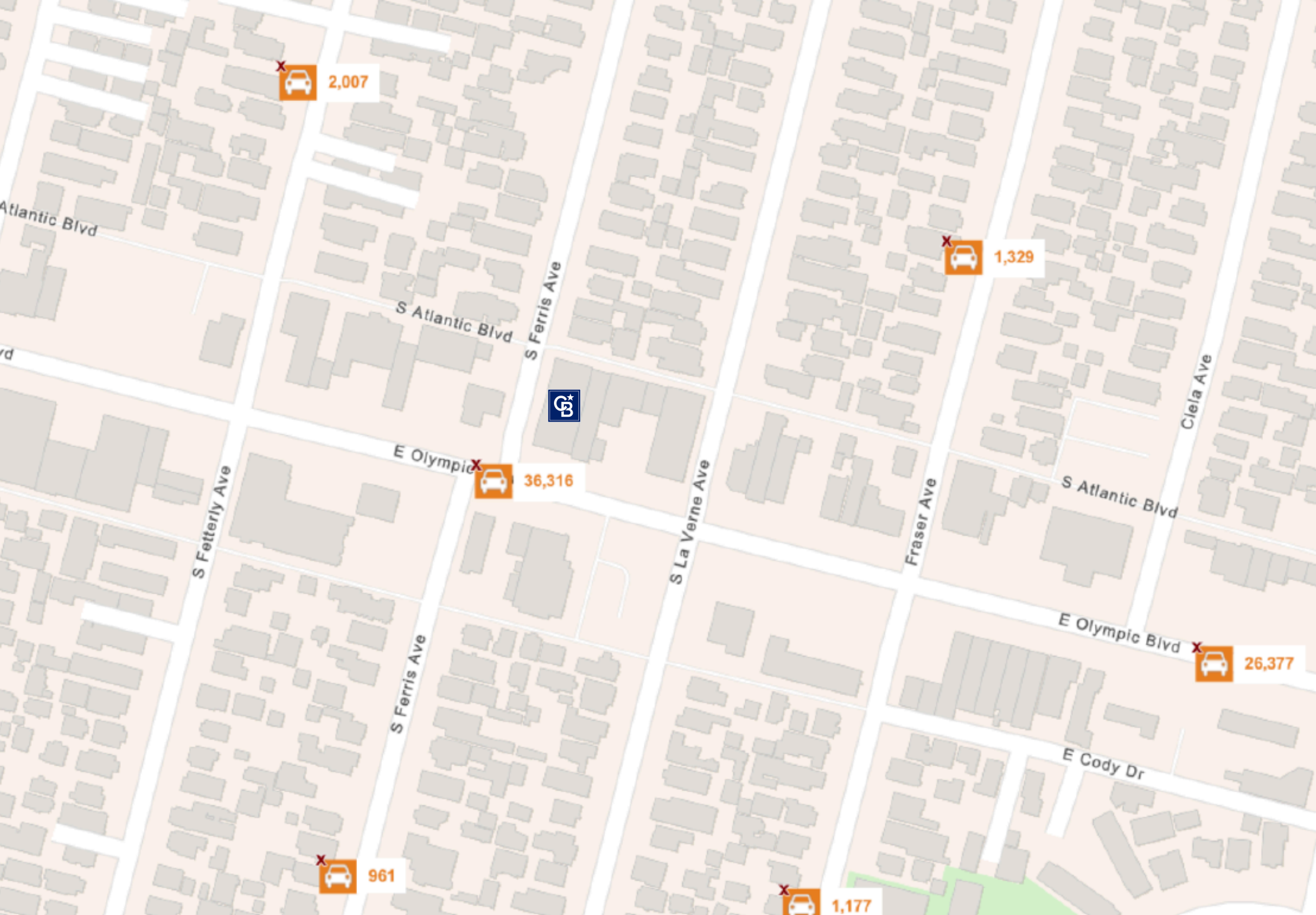
Located in a highly accessible East Los Angeles location, this well-maintained industrial property offers exceptional functionality for a wide range of commercial uses. Zoned *Commercial Manufacturing (LCM1)**, the building features a 14.5-foot clear height and both 3-phase and single-phase power capability, accommodating a variety of operational needs. The layout includes two ground-level loading doors (11' x 11' and 10' x 11') for efficient shipping and receiving, two bathrooms for convenience, and an additional 234 SF mezzanine (not included in the total square footage) for storage or light workspace.

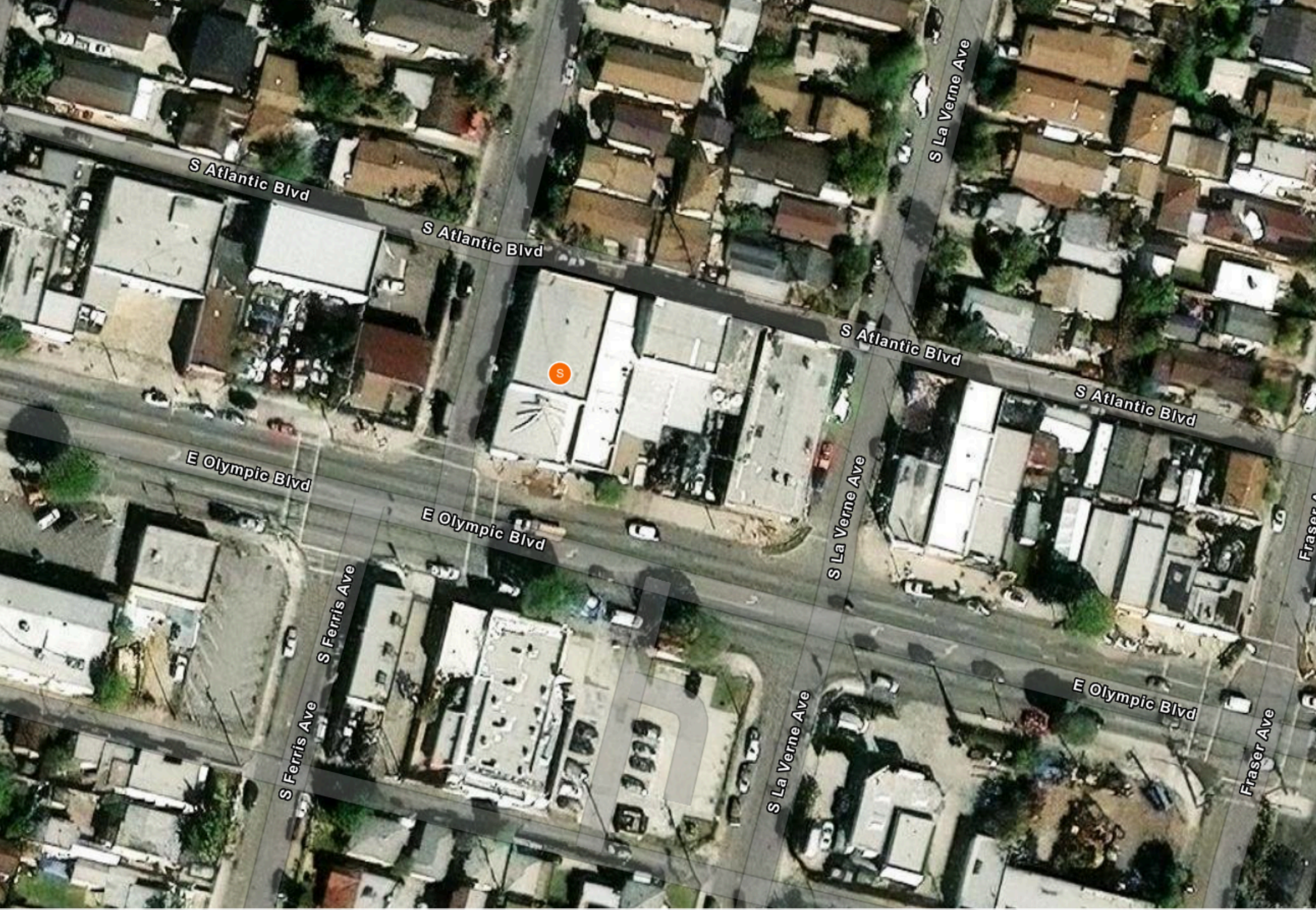
This property presents an excellent opportunity for owner-users or investors seeking a versatile facility in a strategic location with strong surrounding business infrastructure.



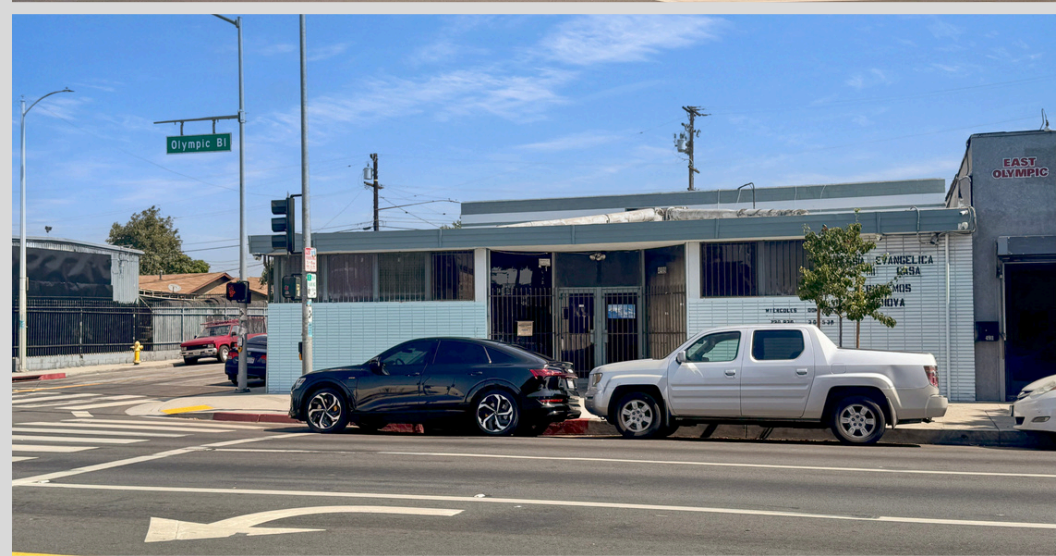
Community Maps Contributors, County of Los Angeles, California State Parks, © OpenStreetMap, Microsoft, Esri, TomTom, Garmin, SafeGraph, GeoTechnologies, Inc, ME... Powered by Esri

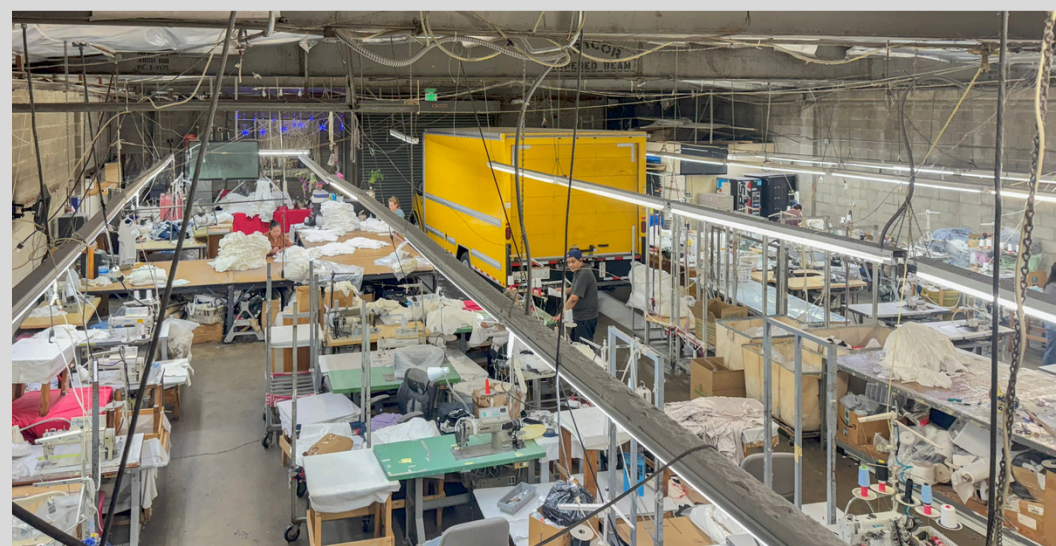
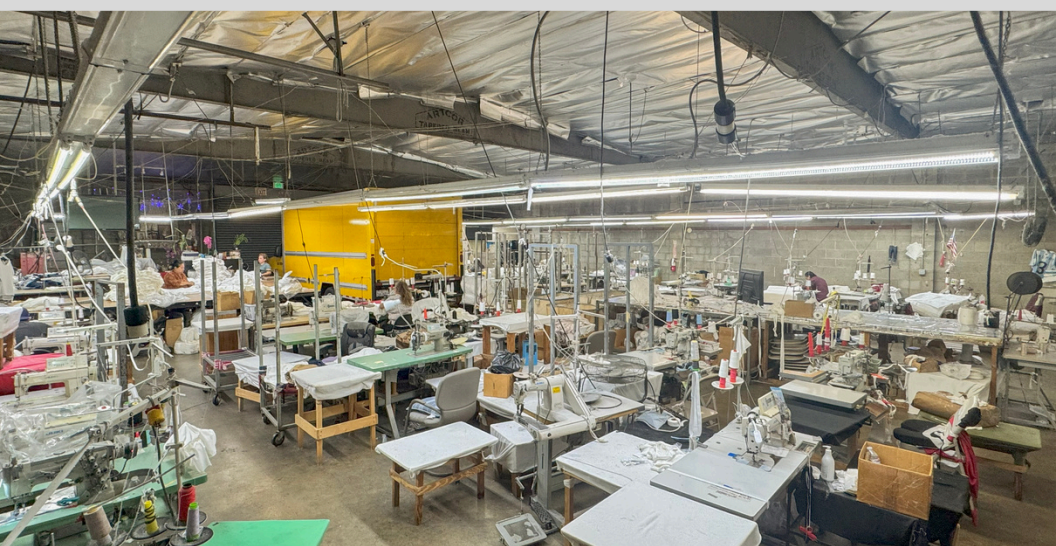






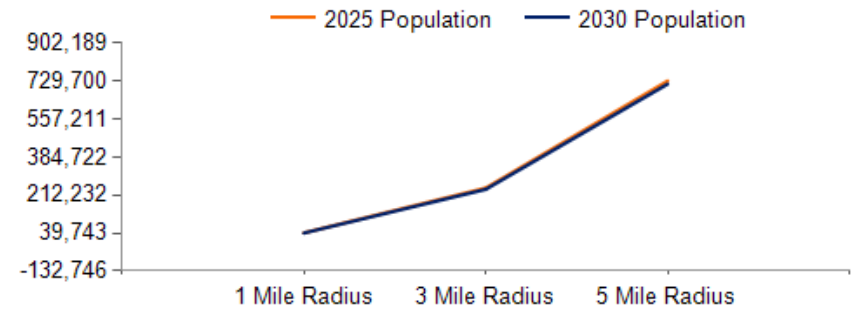
axar | Esri Community Maps Contributors, County of Los Angeles, California State Parks, © OpenStreetMap, Microsoft, Esri, TomTom, Garmin, SafeGraph, GeoTechnologies, ... Powered by Esri



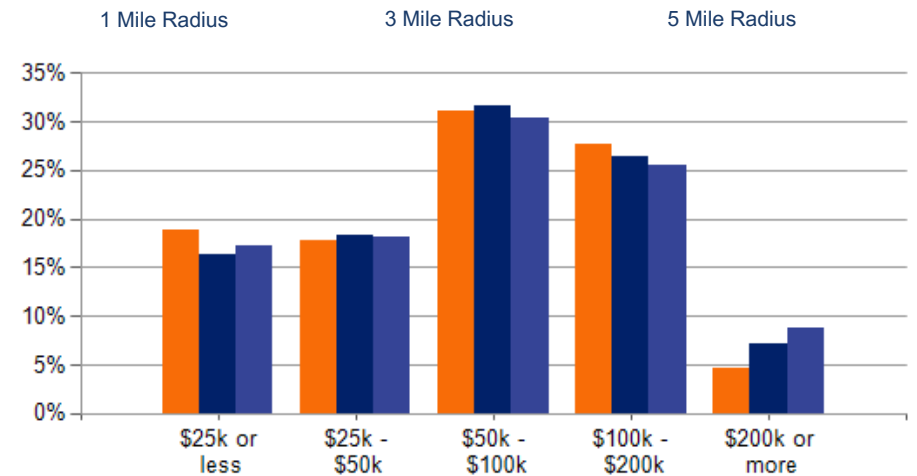


POPULATION	1 MILE	3 MILE	5 MILE
2000 Population	44,310	270,516	793,303
2010 Population	44,439	267,837	786,700
2025 Population	40,739	244,153	729,700
2030 Population	39,743	238,073	715,776
2025 African American	272	1,861	14,532
2025 American Indian	1,336	7,034	18,565
2025 Asian	263	16,639	98,354
2025 Hispanic	39,330	218,413	580,645
2025 Other Race	24,215	132,925	349,659
2025 White	6,734	37,170	112,141
2025 Multiracial	7,906	48,352	135,717
2025-2030: Population: Growth Rate	-2.45%	-2.50%	-1.90%

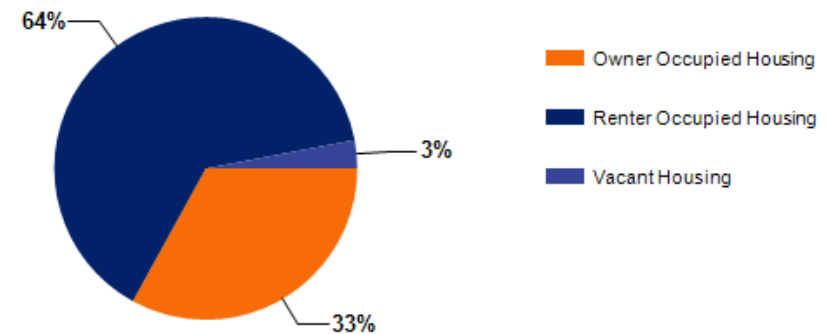
2025 HOUSEHOLD INCOME	1 MILE	3 MILE	5 MILE
less than \$15,000	1,187	6,327	21,865
\$15,000-\$24,999	915	5,268	15,610
\$25,000-\$34,999	970	5,519	16,649
\$35,000-\$49,999	1,007	7,430	22,668
\$50,000-\$74,999	1,984	12,163	37,235
\$75,000-\$99,999	1,484	10,262	28,957
\$100,000-\$149,999	1,995	12,413	36,086
\$150,000-\$199,999	1,086	6,324	19,233
\$200,000 or greater	512	5,075	19,256
Median HH Income	\$68,178	\$71,909	\$70,856
Average HH Income	\$86,324	\$92,215	\$94,953



2025 Household Income



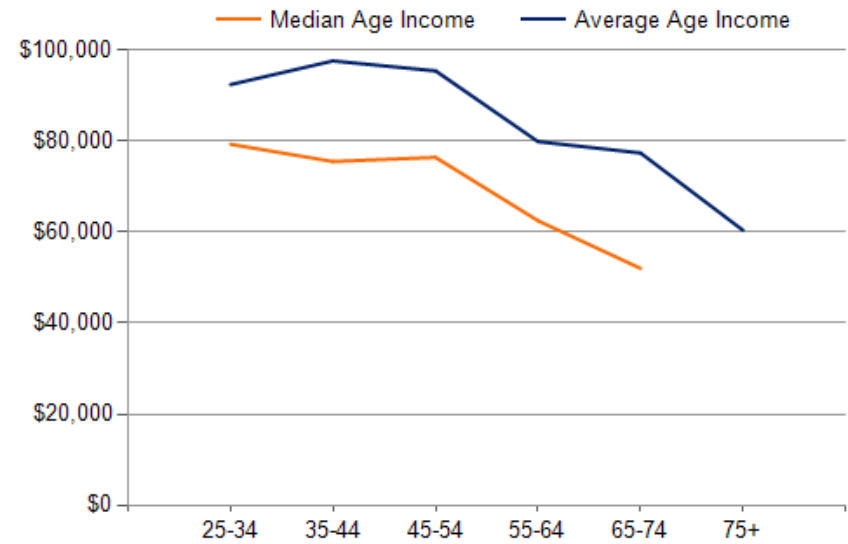
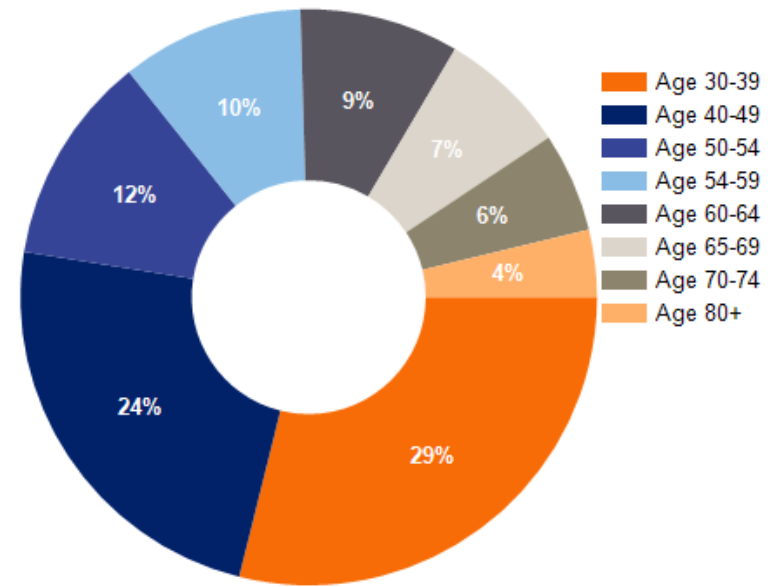
2025 Own vs. Rent - 1 Mile Radius



Source: esri

2025 POPULATION BY AGE	1 MILE	3 MILE	5 MILE
2025 Population Age 30-34	3,460	20,665	62,280
2025 Population Age 35-39	2,880	17,044	52,478
2025 Population Age 40-44	2,551	15,790	47,624
2025 Population Age 45-49	2,638	15,425	45,702
2025 Population Age 50-54	2,583	15,426	47,270
2025 Population Age 55-59	2,250	13,798	43,329
2025 Population Age 60-64	1,961	11,856	38,262
2025 Population Age 65-69	1,575	10,330	32,590
2025 Population Age 70-74	1,224	8,495	27,156
2025 Population Age 75-79	828	6,106	19,506
2025 Population Age 80-84	532	3,826	12,177
2025 Population Age 85+	457	3,882	12,529
2025 Population Age 18+	31,208	189,506	577,883
2025 Median Age	34	35	36
2030 Median Age	35	36	38

2025 INCOME BY AGE	1 MILE	3 MILE	5 MILE
Median Household Income 25-34	\$79,335	\$79,328	\$78,236
Average Household Income 25-34	\$92,453	\$95,323	\$96,952
Median Household Income 35-44	\$75,526	\$80,635	\$81,236
Average Household Income 35-44	\$97,661	\$104,896	\$110,245
Median Household Income 45-54	\$76,446	\$81,668	\$82,466
Average Household Income 45-54	\$95,475	\$104,006	\$108,656
Median Household Income 55-64	\$62,517	\$70,220	\$70,912
Average Household Income 55-64	\$79,901	\$91,394	\$96,421
Median Household Income 65-74	\$52,036	\$55,549	\$54,607
Average Household Income 65-74	\$77,411	\$80,621	\$80,328
Average Household Income 75+	\$60,417	\$66,402	\$64,608



**1140 S Ferris Avenue
Los Angeles, CA 90022**

CONFIDENTIALITY and DISCLAIMER

The information contained in the following offering memorandum is proprietary and strictly confidential. It is intended to be reviewed only by the party receiving it from Coldwell Banker Commercial and it should not be made available to any other person or entity without the written consent of Coldwell Banker Commercial. By taking possession of and reviewing the information contained herein the recipient agrees to hold and treat all such information in the strictest confidence. The recipient further agrees that recipient will not photocopy or duplicate any part of the offering memorandum. If you have no interest in the subject property, please promptly return this offering memorandum to Coldwell Banker Commercial. This offering memorandum has been prepared to provide summary, unverified financial and physical information to prospective purchasers, and to establish only a preliminary level of interest in the subject property. The information contained herein is not a substitute for a thorough due diligence investigation. Coldwell Banker Commercial has not made any investigation, and makes no warranty or representation with respect to the income or expenses for the subject property, the future projected financial performance of the property, the size and square footage of the property and improvements, the presence or absence of contaminating substances, PCBs or asbestos, the compliance with local, state and federal regulations, the physical condition of the improvements thereon, or financial condition or business prospects of any tenant, or any tenant's plans or intentions to continue its occupancy of the subject property. The information contained in this offering memorandum has been obtained from sources we believe reliable; however, Coldwell Banker Commercial has not verified, and will not verify, any of the information contained herein, nor has Coldwell Banker Commercial conducted any investigation regarding these matters and makes no warranty or representation whatsoever regarding the accuracy or completeness of the information provided. All potential buyers must take appropriate measures to verify all of the information set forth herein. Prospective buyers shall be responsible for their costs and expenses of investigating the subject property.

Exclusively Marketed by:

ROBERT IP

626 394 2527

Robert.Ip@cbcnrt.com

CalDRE #01876261

BILL UKROPINA

626 844 2200

Bill.Ukropina@cbcnrt.com

CalDRE #00820557



**COLDWELL BANKER
COMMERCIAL**
REALTY