

Office Space for Lease

2670 Firewheel Drive

Flower Mound, Texas



- LOCATION:** NEQ of FM 2499 and Firewheel Drive. Immediate access to Long Prairie Rd (FM 2499).
- SPACE AVAILABLE:**
- Suite B:** 2,458 SF - Reception; 5 exam/counseling rooms, lg. group room & 4 offices.
 - Suite C:** 1,900 SF - Reception, 6 Offices (1 Executive), Room for 2 Cubicles, Kitchen & Storage!
 - Suite D:** 933 SF – Reception, 3 offices.
- LEASE RATE:** \$17.00/SF Base Rent plus NNNs.
- SIGNAGE:** Building and Monument facing Firewheel Drive.

For further information contact: Rich Muller



Vintage Realty

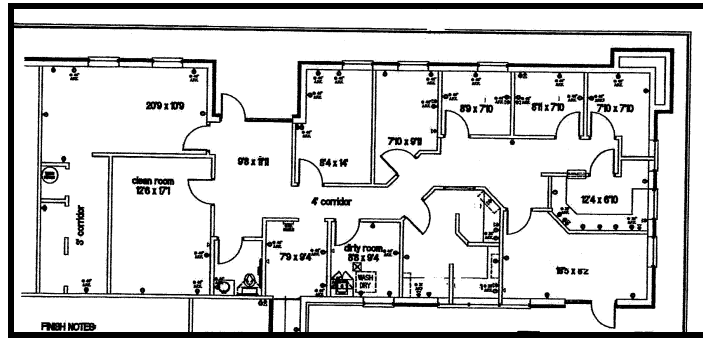
2980 Long Prairie Road, Suite D

Flower Mound, TX 75022

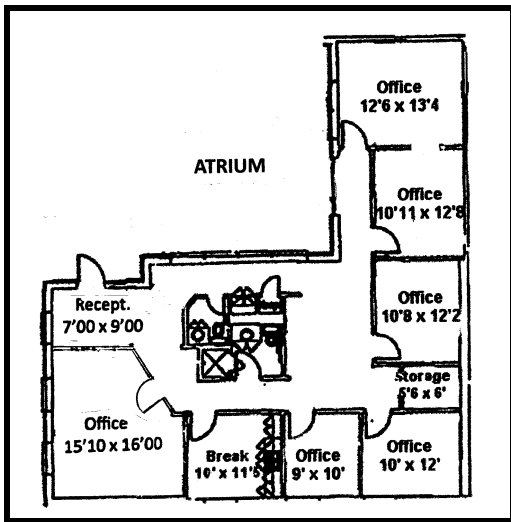
972/355-0669 or Fax 972/355-5477

email: Rich@VintageRealty.net ; www.VintageRealty.net

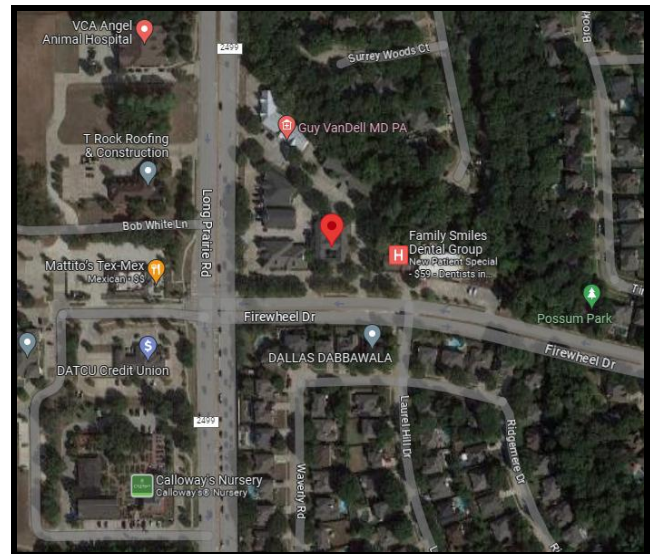
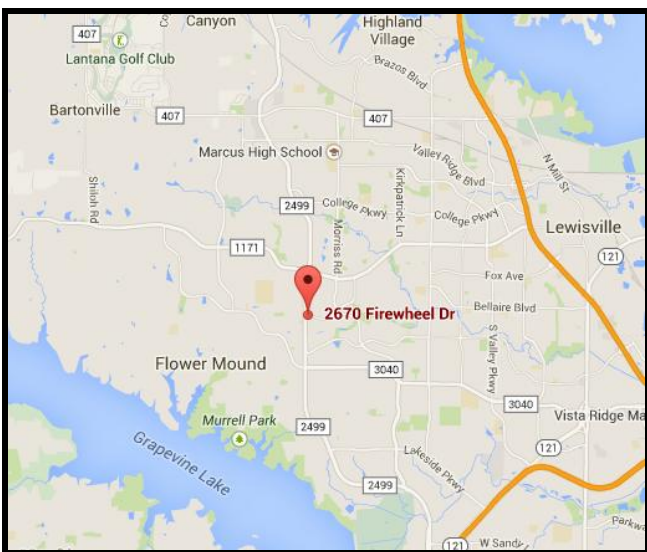
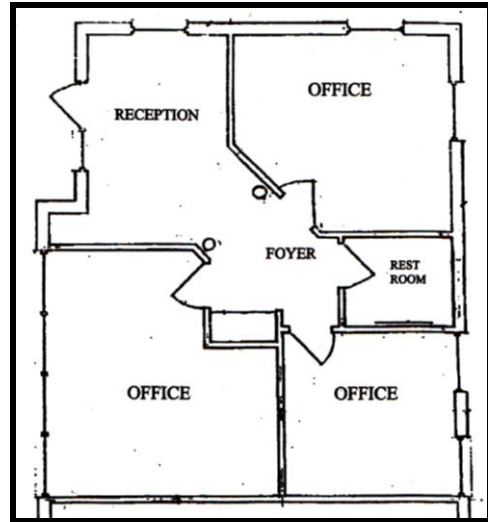
SUITE B



SUITE C



SUITE D



This information is believed to be accurate, but no representation or warranty, express or implied, as to its accuracy or completeness is made by any party. The presentation of this property is submitted subject to errors, omissions, change of price or prior sale or lease, or withdrawal without notice.