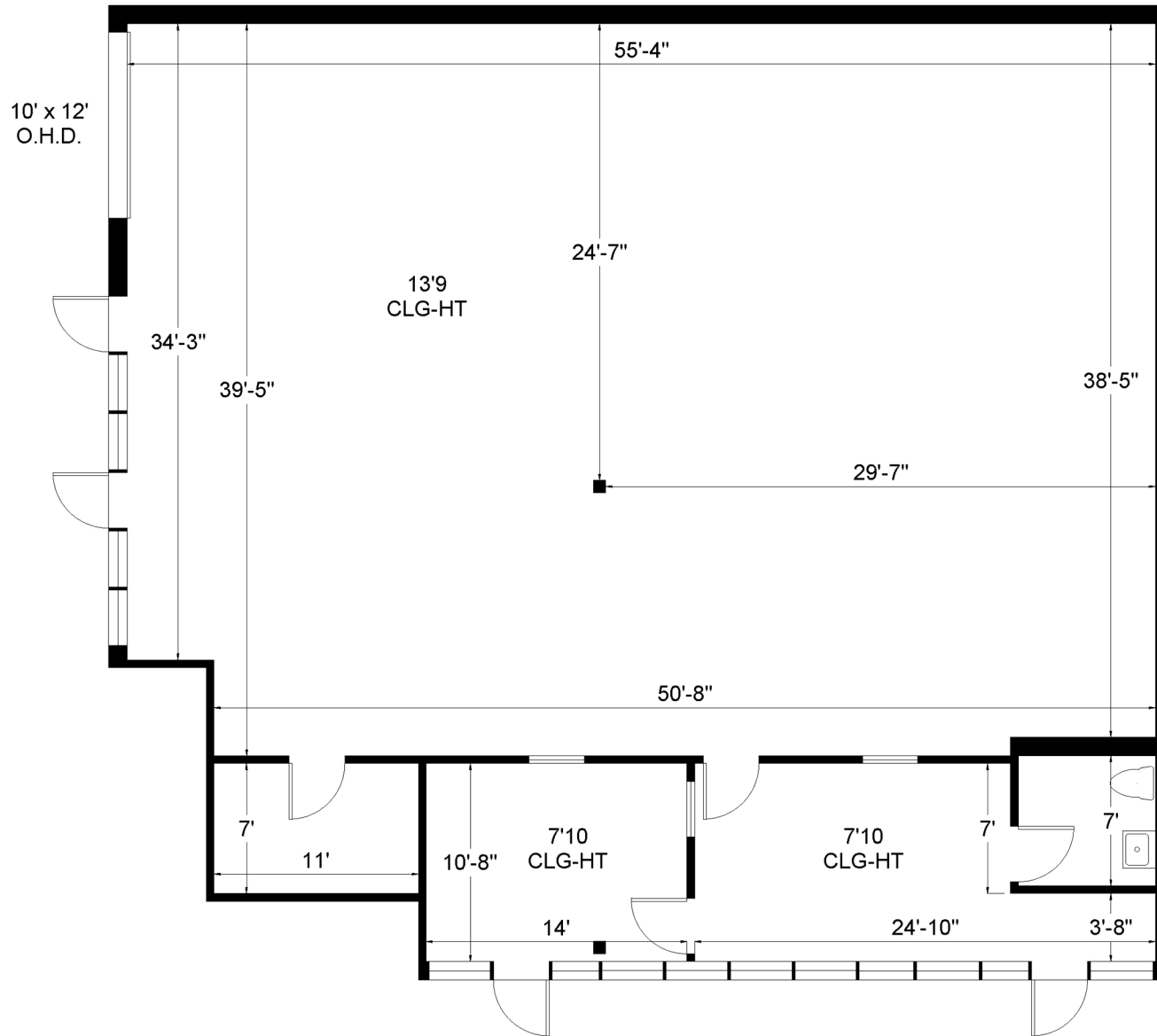


# PALM PLAZA

2450 N Powerline road, Unit 10 | Pompano Beach, FL 33069



Office - 527 Sq. Ft.  
Warehouse - 2,304 Sq. Ft.



Natalie Delisle | Property Manager | 954.478.1293 | Natalie@levyrai.com  
4901 NW 17th Way, Suite 103 | Ft. Lauderdale, FL 33309

2,831 Rentable Sq. Ft.  
[www.LevyRealtyAdvisors.com](http://www.LevyRealtyAdvisors.com)