

Baseline Crossings | Built Out Dental Office For Lease

2610 W Baseline Rd, Bldg B, Suite 120, Phoenix, AZ 85041

Property Summary

Page 1



PROPERTY DESCRIPTION

Introducing 2610 West Baseline Road, Suite 120, Phoenix, AZ. This built-out dental office spans approximately 4,950 SF with visibility and frontage on Baseline Rd. With ample parking, building and electronic monument signage, and end cap positioning this space is a great opportunity for any dentist looking to start a practice in Phoenix.

OFFERING SUMMARY

Lease Rate:	\$28.00 SF/yr (NNN)
Available:	October 1, 2025
Available SF:	4,950 SF
Building Size:	17,632 SF

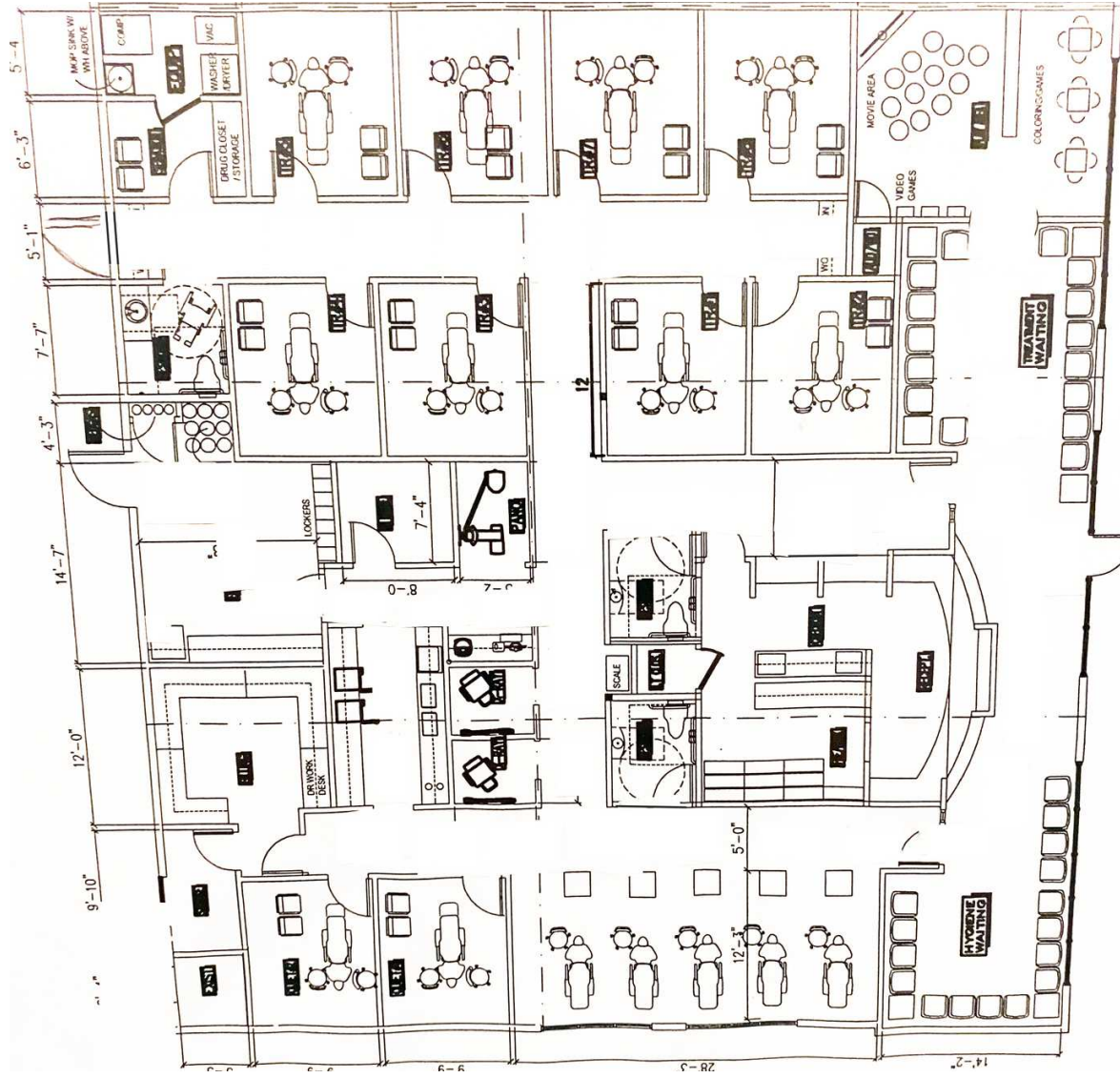
PROPERTY HIGHLIGHTS

- Built Out Dental Office
- Ample Parking
- Building and Electronic Monument Signage
- End Cap Suite
- C-1 Zoning
- Great Visibility and Frontage along Baseline Rd
- Easy Access

Baseline Crossings | Built Out Dental Office For Lease

2610 W Baseline Rd, Bldg B, Suite 120, Phoenix, AZ 85041

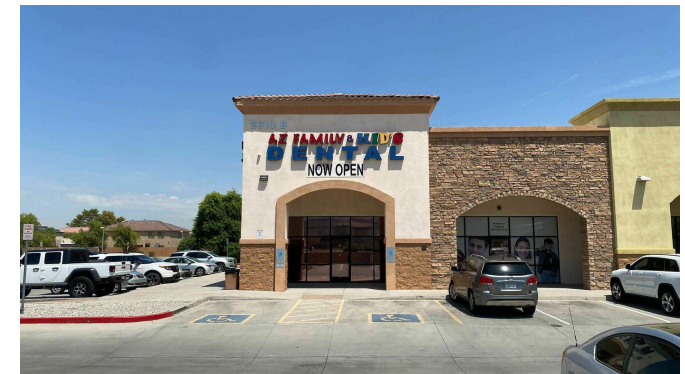
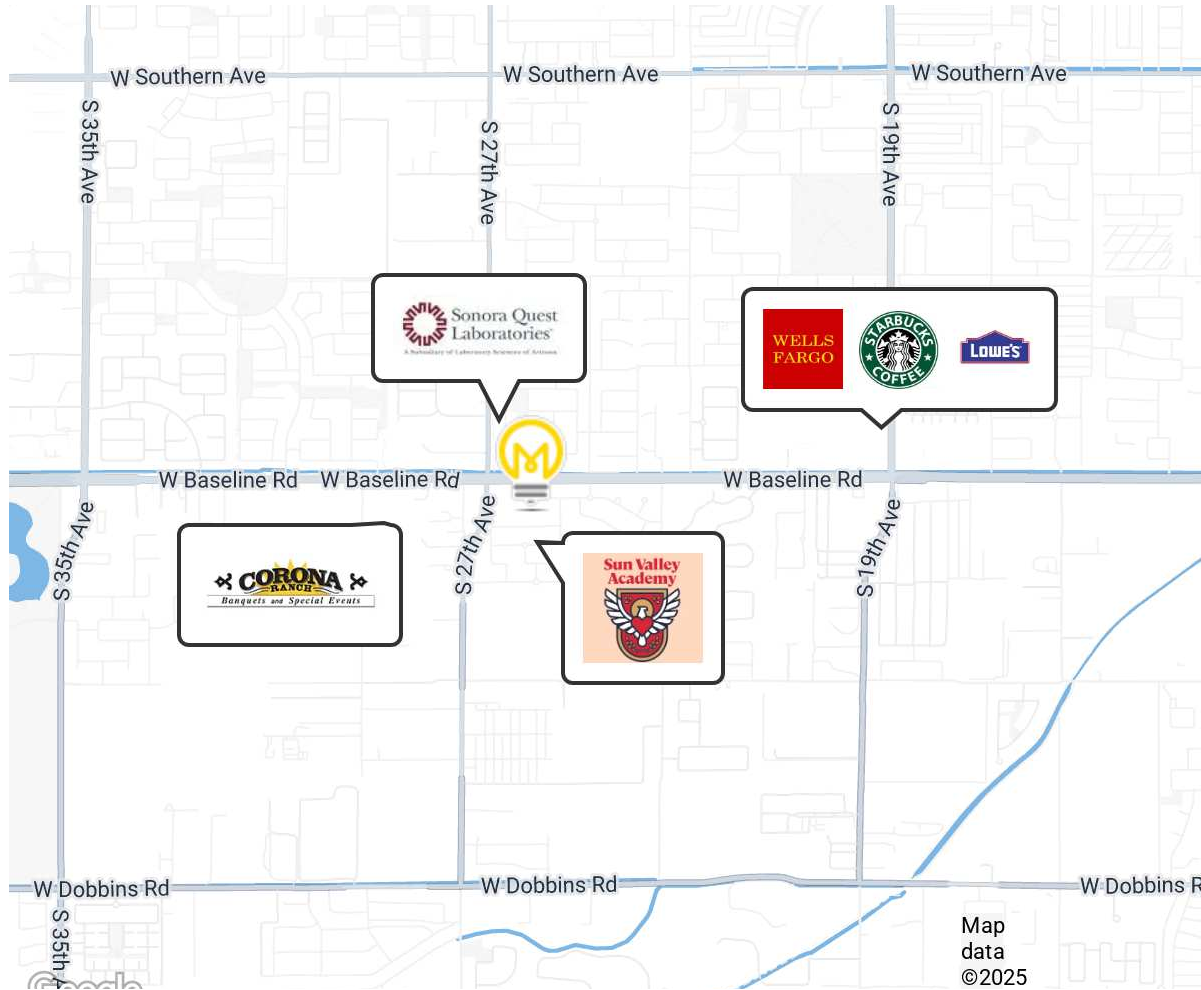
Floor Plan



Baseline Crossings | Built Out Dental Office For Lease

2610 W Baseline Rd, Bldg B, Suite 120, Phoenix, AZ 85041

Site Details



MENLO GROUP
480.659.1777
1809 S Holbrook Ln, Tempe, AZ 85281
menlocre.com

RYAN EDWARDS
480.760.5044
ryan@menlocre.com

RICH ANDRUS, MBA, CCIM, SIOR
480.659.1777
rich@menlocre.com

