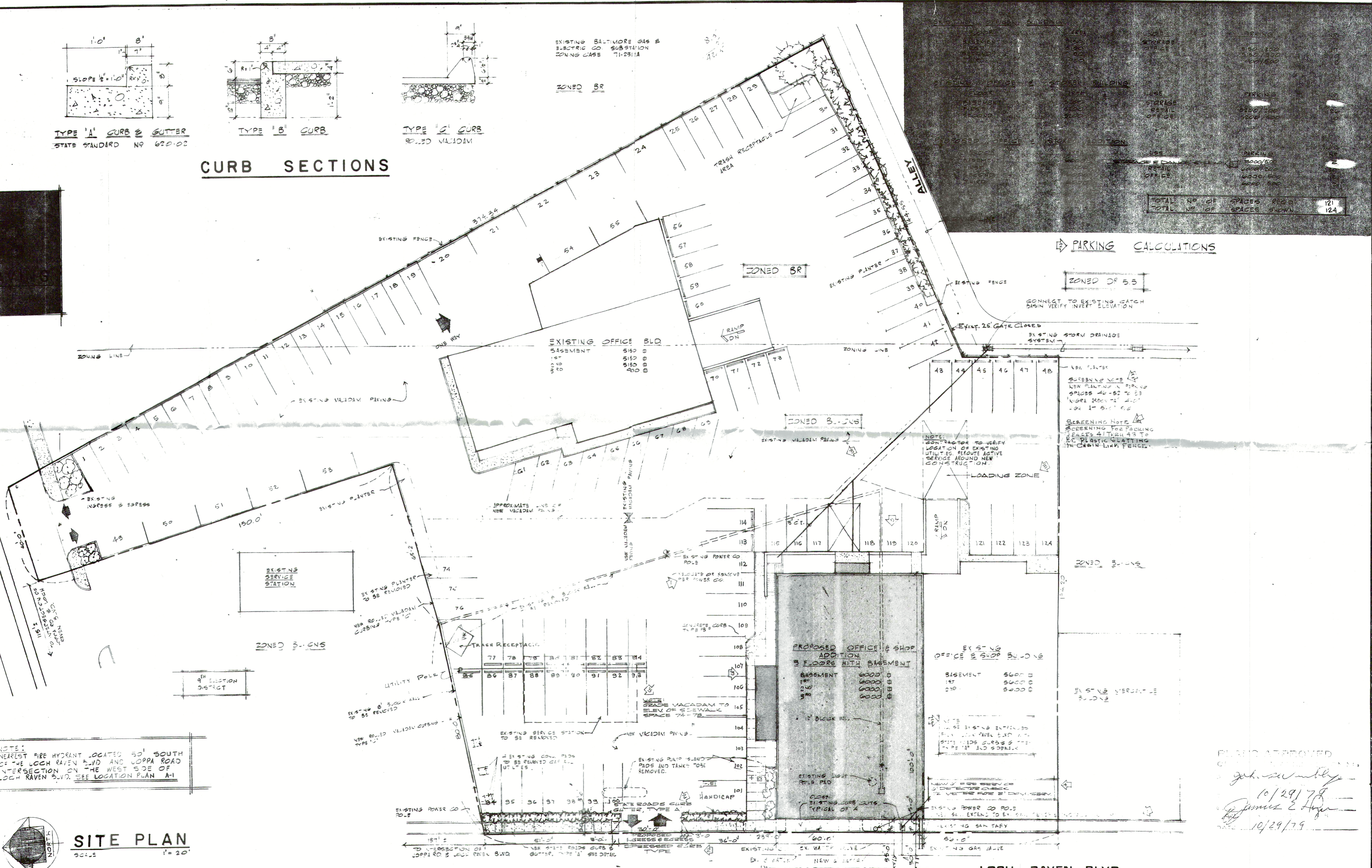


CURB SECTIONS

EXISTING BALTIMORE GAS & ELECTRIC CO. SUBSTATION
ZONING CASE 71-2311A

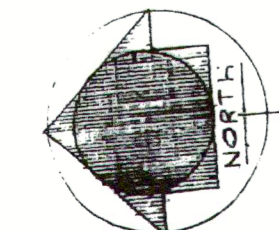
ZONED BR



PARKING CALCULATIONS

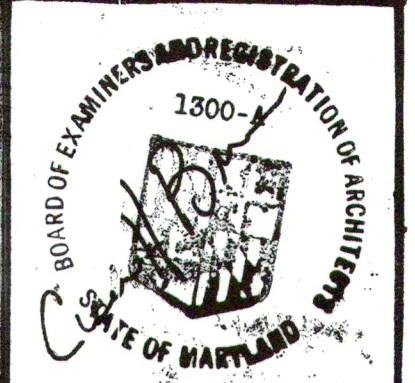
TOTAL NO. OF SPACES PER 2	121
TOTAL NO. OF SPACES SHOWN	124

NOTE: NEAREST FIRE HYDRANT LOCATED 50' SOUTH OF THE LOCH RAVEN BLVD AND JOPPA ROAD INTERSECTION ON THE WEST SIDE OF LOCH RAVEN BLVD. SEE LOCATION PLAN A-1



SITE PLAN
SCALE 1" = 20'

LOCH RAVEN BLVD.



REVISED 21-MAY-78
NEW SANITARY LINE EXTEND TO PUBLIC SEWER REMOVE OR RELOCATE POWER CO. POLE 5-SEP-78
REVISED TO CORRECT TO DATE WITH COUNTY DEPARTMENT OF PUBLIC WORKS DRAWINGS 17-MARCH-1979 REVISED PARKING AREA 27-AUG-1978 REVISED WATER METER NOTE 10-SEPT-78-ADD DRAINAGE STUDIO A-1, A-2, A-3 10-10-01 79 REVISED PARKING Fee As Built.

C H BROWN & ASSOC.
ARCHITECTS
501 YORK ROAD
TOWSON MD

PROPOSED OFFICE & STORE ADDITION FOR MR. & MRS. PAUL SCHAFFER
JOPPA ROAD
TOWSON MD

A2
SHEET NO.

PLANS APPROVED
10/29/78
10/29/79