

# PLAZA 5601



5601 EXECUTIVE DRIVE, IRVING, TX 75038





## PROPERTY FEATURES

- Well-funded ownership
- Full glass wall options
- Receive a 2D & 3D space plan prior to touring
- Best in market rental rate
- Move-in allowance
- 4/1,000 parking ratio
- New spec suites
- Expansive views



## PROPERTY AMENITIES

- New conference center
- New training room
- New tenant lounge



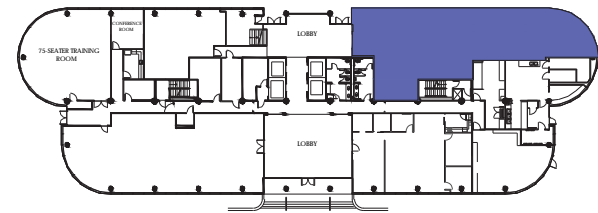
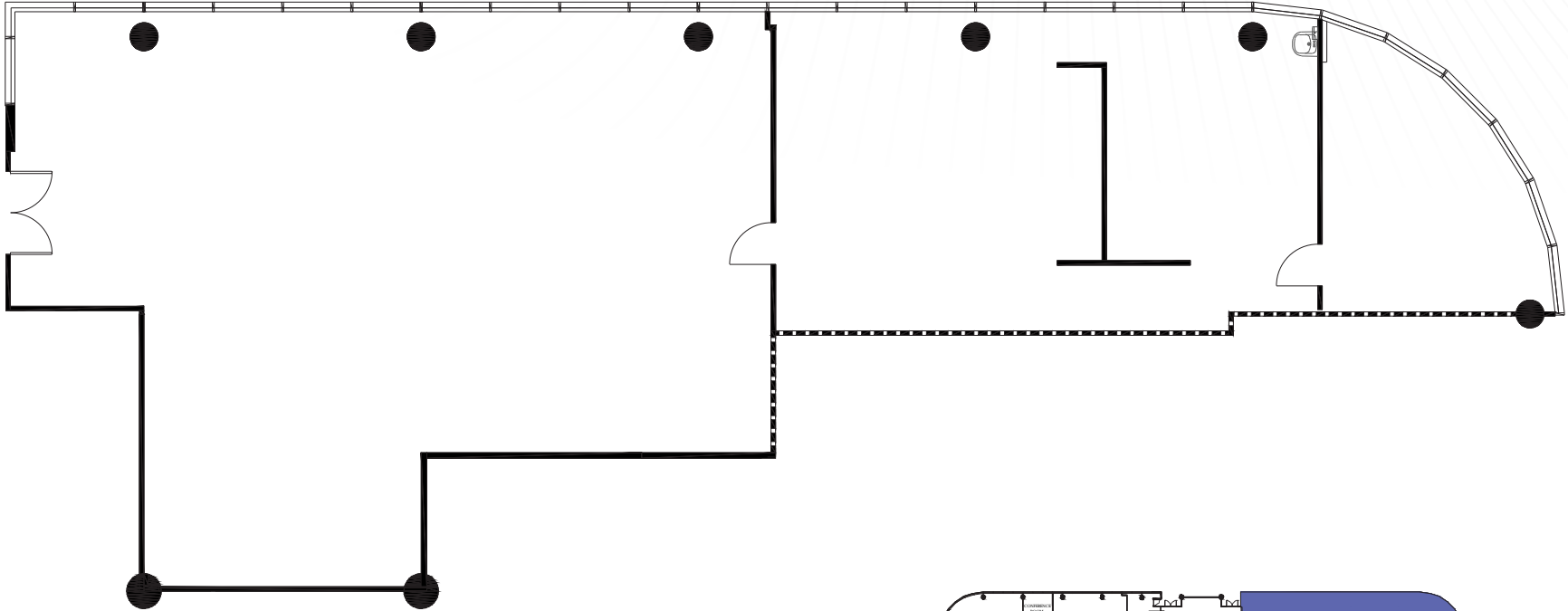
# AVAILABILITIES

**SUITE 315 - 1,135 SF**

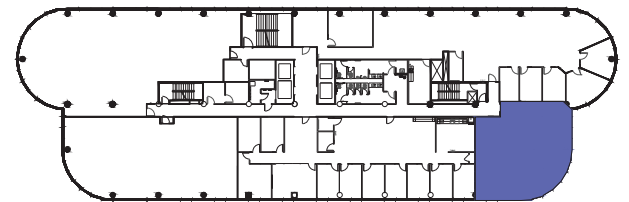
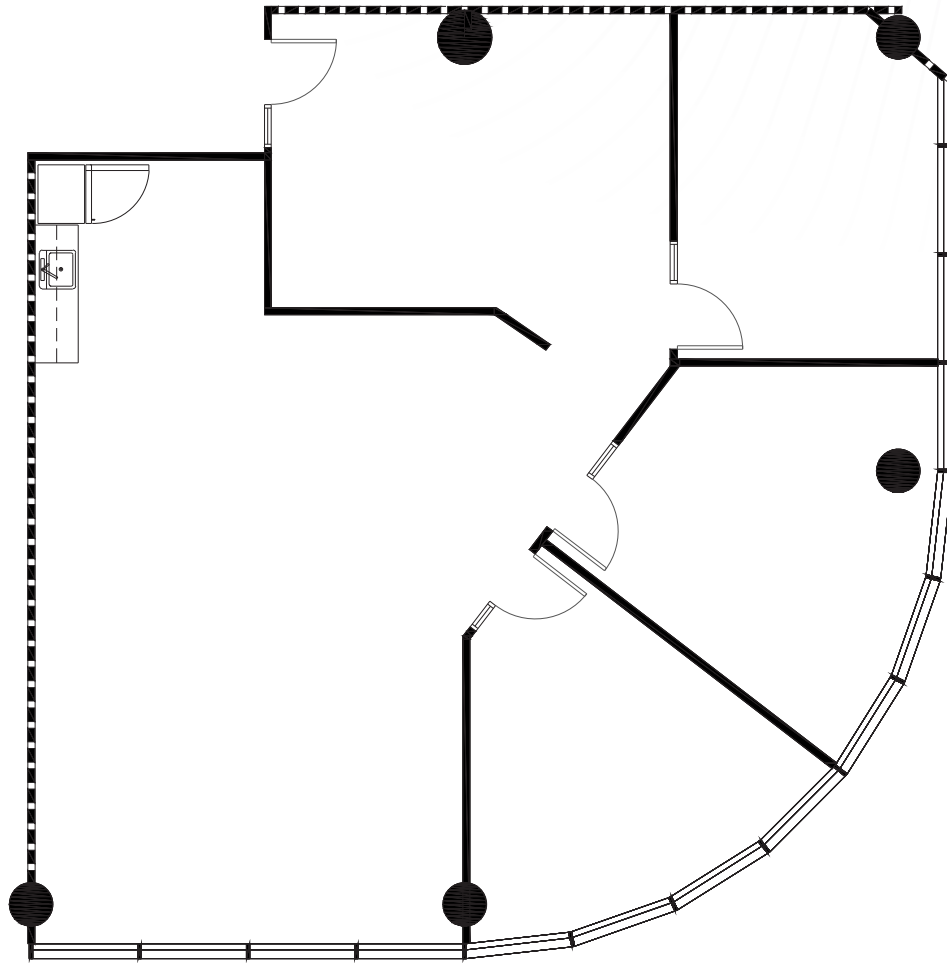
**SUITE 215 - 2,029 SF**

**SUITE 175 - 3,962 SF**

# SUITE 175 - 3,962 RSF



SUITE 215 - 2,029 RSF



# SUITE 315 - 1,135 RSF





# ACCESSIBILITY & LOCATION

**PLAZA**  
**5601**   
5601 Executive Dr.

**DFW International Airport**  


**Las Colinas**

**Dallas Love Field Airport**  


**Irving**

**Dallas CBD**

*Dallas North Tollway*



# AREA AMENITIES

Hackberry Creek Country Club



Keenan Crossing Park



**PLAZA 5601**  
5601 Executive Dr.



MacArthur Blvd

TPC-Las Colinas



Cottonwood Valley

The Las Colinas Resort



WD Harrington Park

Dallas/Ft Worth Int'l Airport






City of Irving Soccer Complex

161




Spring Trail Park

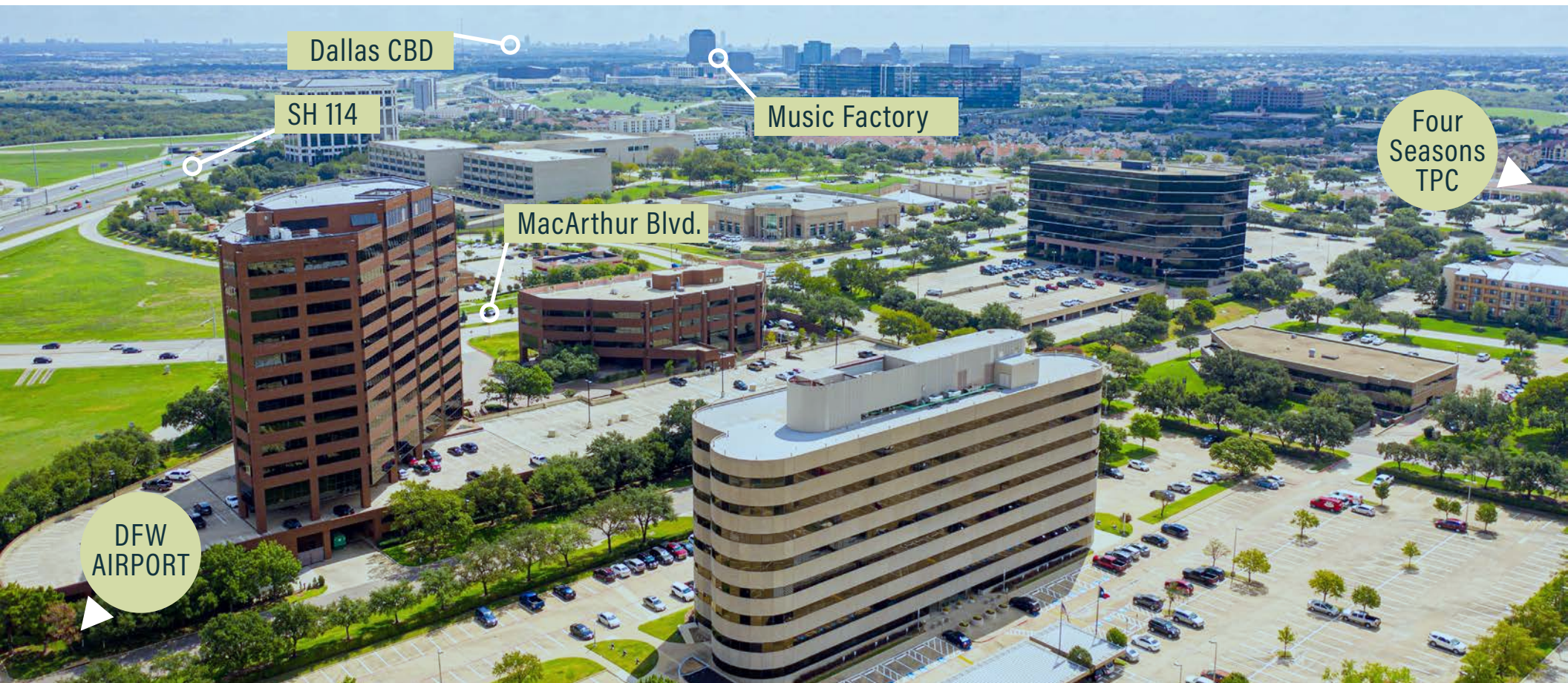
Birds Fort Trail Park

## ACCESS

-  Immediate access to HWY 114 and HWY 161
-  16 minutes to Dallas Love Field
-  7 minutes to Dallas/Ft. Worth International Airport
-  12 minutes to Dallas/Ft. Worth International Airport via DART Rail North Lake Station
-  1.2 miles from DART Rail North Lake Station

## AREA AMENITIES

-  350+ restaurants and retail
-  Close proximity to an abundance of luxury and boutique hotels
-  Within miles from Fortune 500 global headquarters offices





FOR MORE INFORMATION, PLEASE CONTACT:

**RODNEY HELM**  
Managing Director  
+1 972 663 9827  
[rodney.helm@cushwake.com](mailto:rodney.helm@cushwake.com)

**MARY FRANCES BURNETTE**  
Senior Associate  
+1 817 682 7330  
[maryfrances.burnette@cushwake.com](mailto:maryfrances.burnette@cushwake.com)

PLAZA  
5601 

 **CUSHMAN &  
WAKEFIELD**

©2024 Cushman & wakefield. All rights reserved. The information contained in this communication is strictly confidential. This information has been obtained from sources believed to be reliable but has not been verified. No warranty or representation, express or implied, is made as to the condition of the property (or properties) referenced herein or as to the accuracy or completeness of the information contained herein, and same is submitted subject to errors, omissions, change of price, rental or other conditions, withdrawal without notice, and to any special listing conditions imposed by the property owner(s). Any projections, opinions or estimates are subject to uncertainty and do not signify current or future property performance.