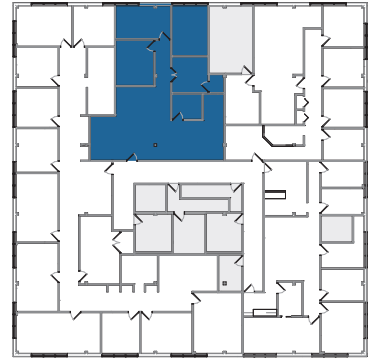
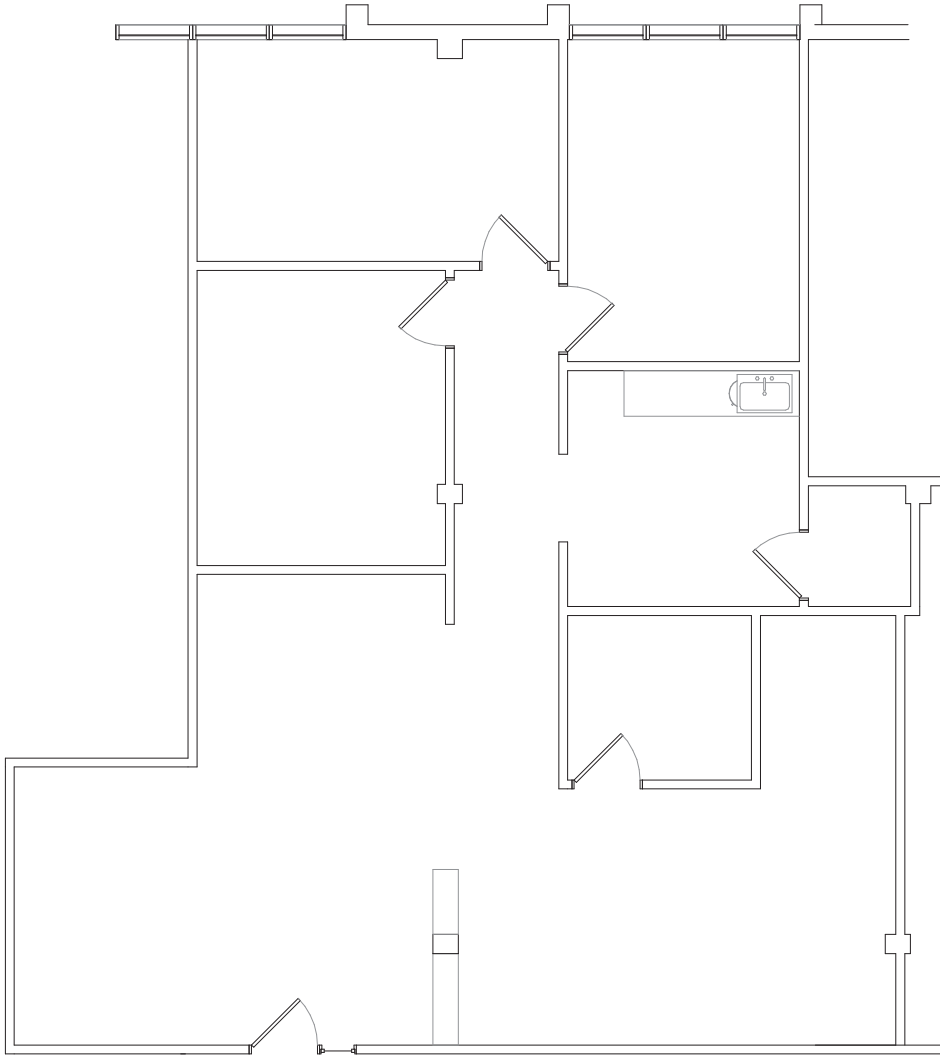


OAKMONT PROFESSIONAL BUILDING

WESTMONT, IL

801 N CASS AVENUE

SUITE 201 | 1,766 RSF



DAN O'NEILL
630 691 0610
doneill@hiffman.com

STEVE CHRASTKA
630 317 0746
schrastka@hiffman.com

COURTNEY SWEISS
630 317 0748
csweiss@hiffman.com

NAL Hiffman
Commercial Real Estate Services, Worldwide


TY WARNER
HOTELS & RESORTS