

The logo for NAI Commercial, featuring the letters 'NAI' in a bold, sans-serif font with a red diagonal line through the 'A', followed by the word 'Commercial' in a smaller, black, sans-serif font.

NAICommercial

A red diagonal banner in the top right corner of the image, containing the text '1,765 SF' in white, bold, sans-serif font.

1,765 SF

An aerial view of a modern glass skyscraper in a city, reflecting the surrounding buildings and sky. The building is the central focus, with other high-rise buildings visible in the background and foreground.

#1240 - 605 Robson Street | Vancouver, BC

FOR LEASE | Improved Corner Office

Opportunity to lease an Improved corner office space in Downtown Vancouver, located on the North West corner of Robson and Seymour Streets. Steps away from the Canada Line, SkyTrain, bus routes, shops, cafés, and restaurants. Well maintained building with on site management.

Roy Gibbs, LL.B
Personal Real Estate Corporation
Commercial Leasing & Sales
778 834 4050
rgibbs@naicommercial.ca

Chris Oteman, B.Sc.
Commercial Leasing & Sales
604 828 0535
coteman@naicommercial.ca

NAI Commercial
1075 W Georgia St, Suite 1300
Vancouver, BC V6E 3C9
+1 604 683 7535
naicommercial.ca

#1240 - 605 Robson Street

Vancouver, BC

Property Details

Unit Size:	1,765 SF
Net Rent:	\$28.00/SF
Additional Rent:	\$22.79/SF (2025)
Availability:	May 1, 2025

Premises:

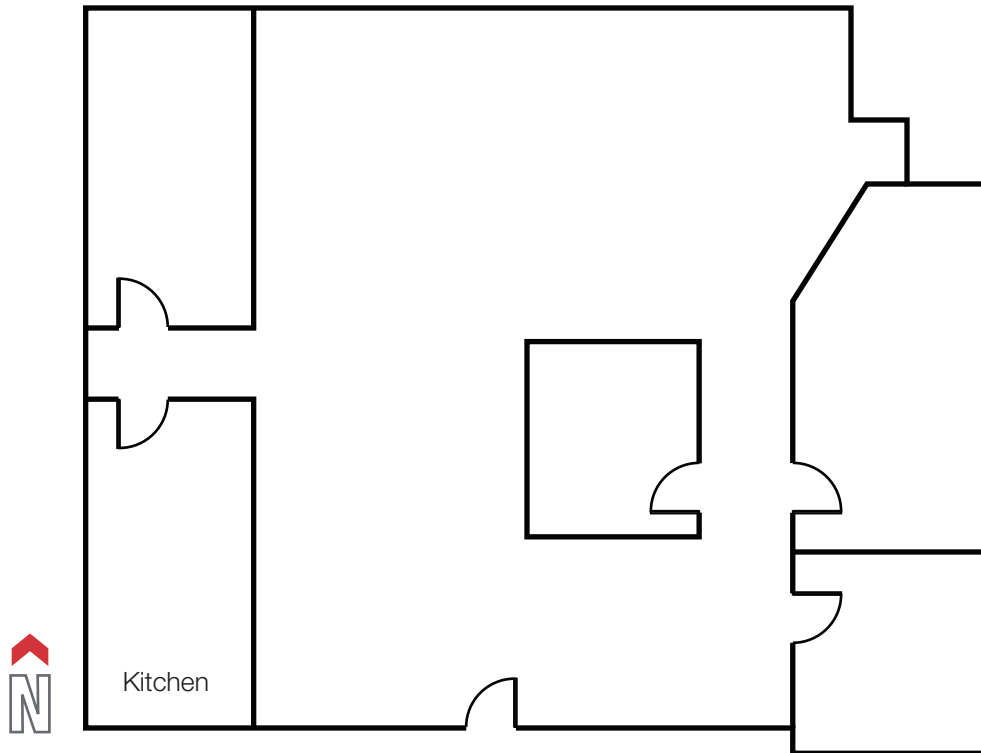
Corner office premises improved with elevator exposure, 2 offices, meeting room, kitchenette and storage room.

This southeast facing office space has full height windows that provide abundant natural light.

Building Details:

The building is conveniently located close to SkyTrain, Pacific Centre, and numerous cafes and restaurants. The building also offers onsite building management, abundant and secure onsite parking, secure bike storage and brand-new end-of-trip facilities including clothes dryer, updated elevators and full height windows providing abundant natural light in all office spaces.

Floor Plan

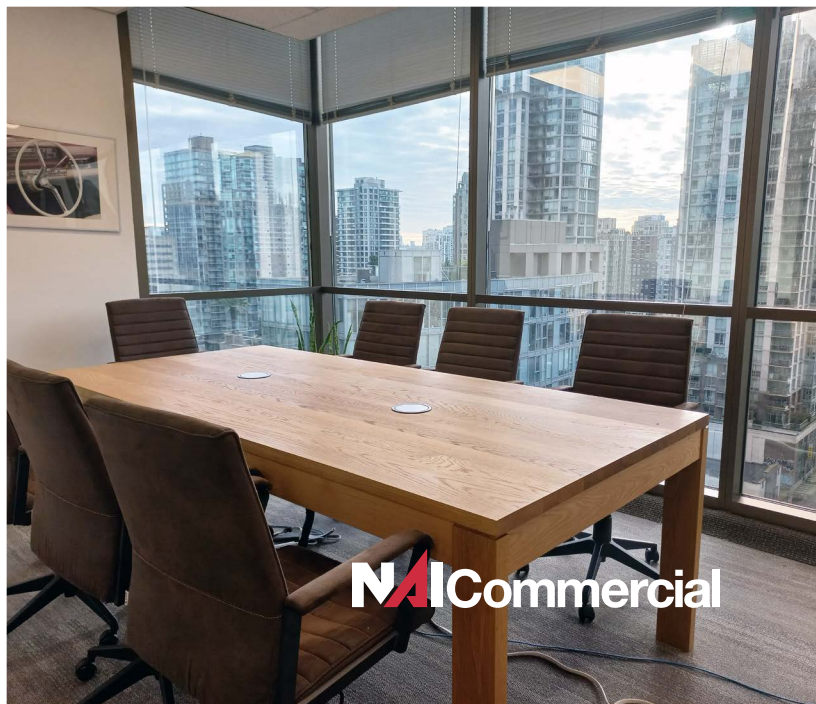


Roy Gibbs, LL.B

Personal Real Estate Corporation
Commercial Leasing & Sales
778 834 4050
rgibbs@naicommercial.ca

Chris Oteman, B.Sc.

Commercial Leasing & Sales
604 828 0535
coteman@naicommercial.ca





GRANVILLE



VANCOUVER CITY CENTRE

PACIFIC CENTRE

ROBSON SQUARE

**605
ROBSON**

**LAW
COURTS**

ORPHEUM

SEYMOUR ST

ROBSON ST

**VANCOUVER
PUBLIC LIBRARY**

WITHIN 5-MIN WALKING DISTANCE

- Five Guys
- Meat & Bread
- Blenz Coffee
- Aladdin Café
- Guu Japanese
- Bahar Bakery & Cafe
- H-Mart
- Cafe Monet Bakery
- Tractor Foods
- JINYA Ramen
- JAPADOG
- CIBC Bank
- The Ox Pub
- Chipotle Mexican
- Jollibee
- Starbucks
- Tim Hortons
- Glowbal
- London Drugs
- Pacific Centre
- Hudson's Bay
- Popeyes
- McDonald's
- Dublin Calling Bar
- Staples
- Fable Diner & Bar
- Cafe Medina
- Viet Sub Vietnamese
- Falafel King
- Paramount Fine Foods
- Gong Cha
- Taf's Cafe
- The Fountainhead Pub

Roy Gibbs, LL.B

Personal Real Estate Corporation
Commercial Leasing & Sales
778 834 4050
rgibbs@naicommercial.ca

Chris Oteman, B.Sc.

Commercial Leasing & Sales
604 828 0535
coteman@naicommercial.ca



No warranty or representation, express or implied, is made as to the accuracy of the information contained herein, and the same is submitted subject to errors, omissions, change of price, rental or other conditions, prior sale, lease or financing, or withdrawal without notice, and of any special listing conditions imposed by our principals no warranties or representations are made as to the condition of the property or any hazards contained therein are any to be implied. Aerial image(s) courtesy of Google, Landsat/Copernicus

NAI Commercial
1075 W Georgia St, Suite 1300
Vancouver, BC V6E 3C9
+1 604 683 7535
naicommercial.ca