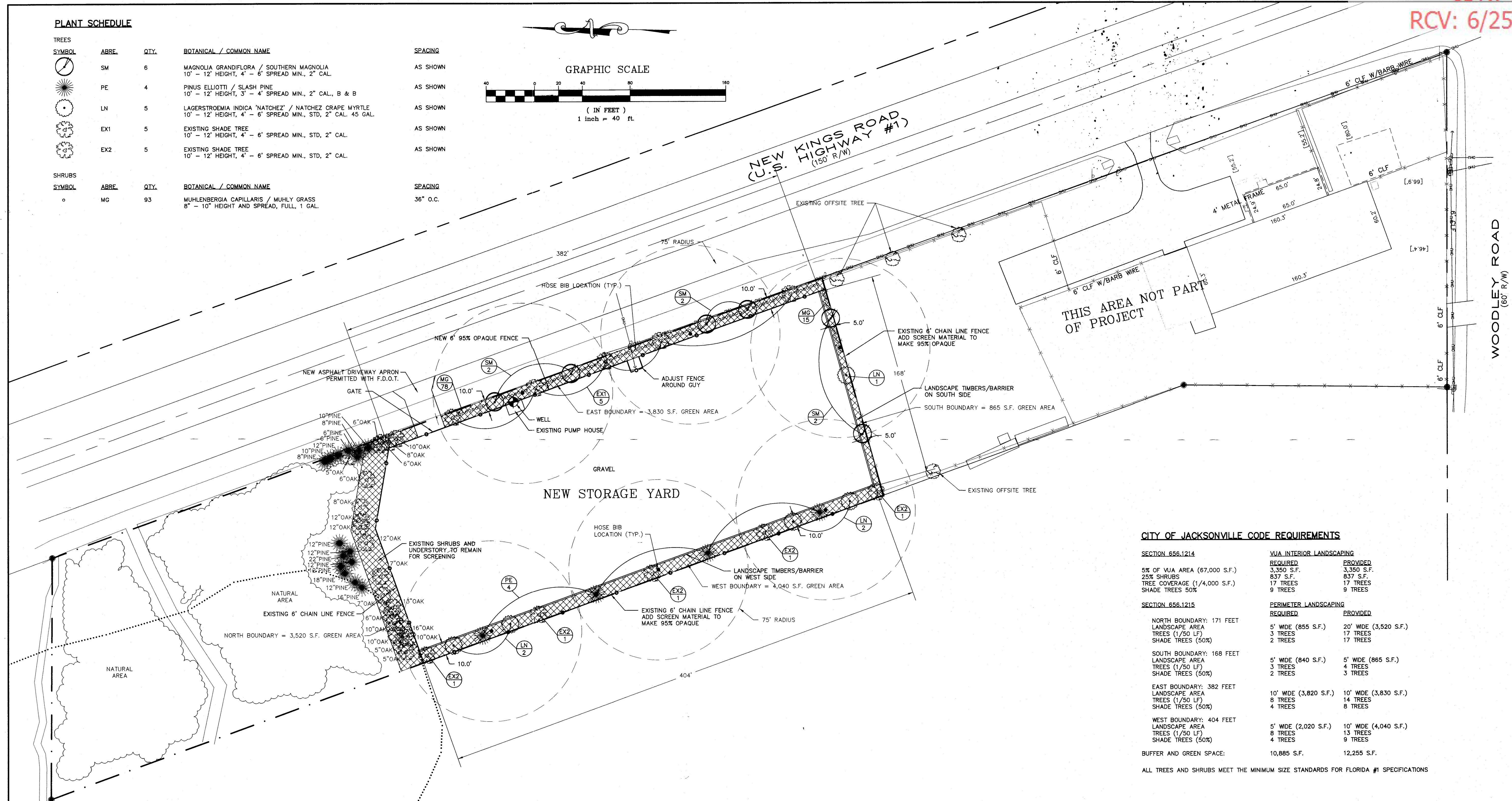
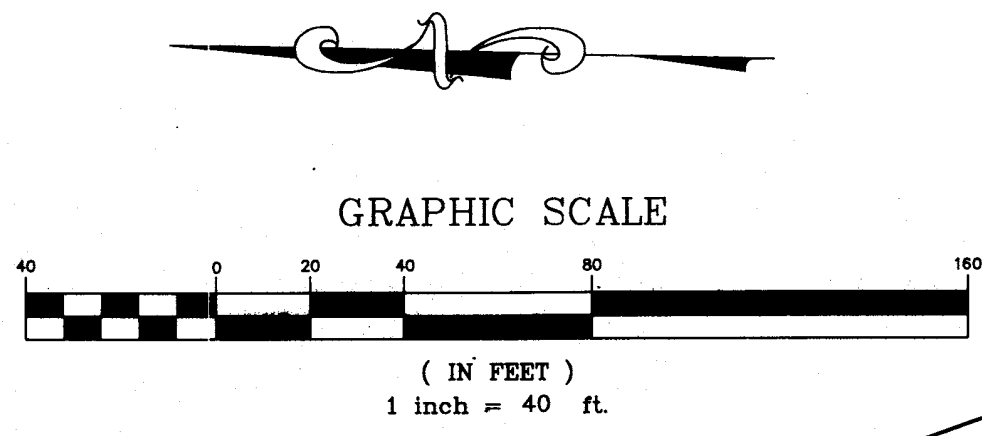


PLANT SCHEDULE

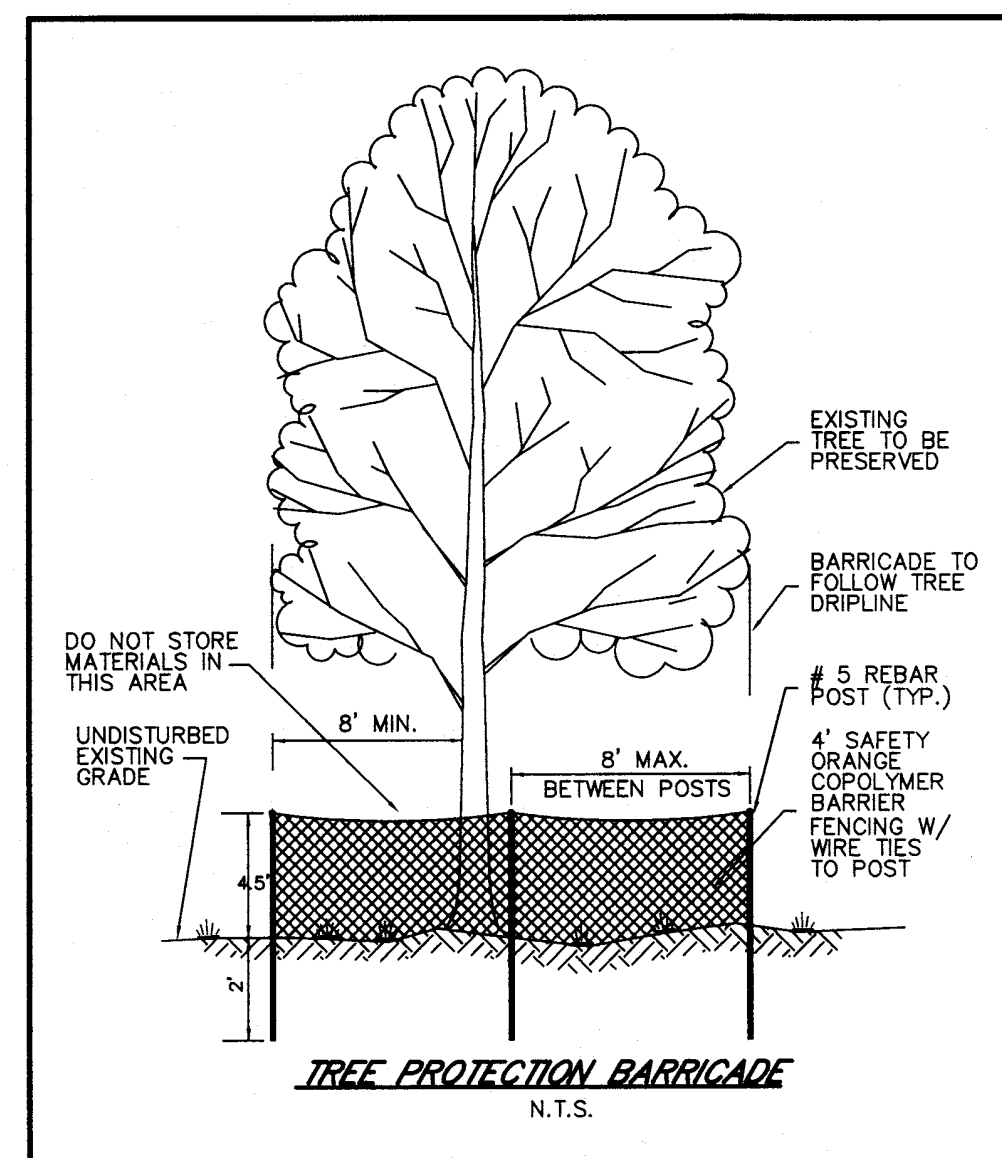
TREES		QTY.	BOTANICAL / COMMON NAME	SPACING
SM	6	MAGNOLIA GRANDIFLORA / SOUTHERN MAGNOLIA 10' - 12' HEIGHT, 4' - 6' SPREAD MIN., 2" CAL.	AS SHOWN	
PE	4	PINUS ELLIOTTI / SLASH PINE 10' - 12' HEIGHT, 3' - 4' SPREAD MIN., 2" CAL., B & B	AS SHOWN	
LN	5	LAGERSTROEMIA INDICA 'NATCHEZ' / NATCHEZ GRAPE MYRTLE 10' - 12' HEIGHT, 4' - 6' SPREAD MIN., STD. 2" CAL. 45 GAL.	AS SHOWN	
EX1	5	EXISTING SHADE TREE 10' - 12' HEIGHT, 4' - 6' SPREAD MIN., STD. 2" CAL.	AS SHOWN	
EX2	5	EXISTING SHADE TREE 10' - 12' HEIGHT, 4' - 6' SPREAD MIN., STD. 2" CAL.	AS SHOWN	
SHRUBS		QTY.	BOTANICAL / COMMON NAME	SPACING
MG	93	MUHLENBERGIA CAPILLARIS / MUHLY GRASS 8' - 10' HEIGHT AND SPREAD, FULL, 1 GAL.	36" O.C.	



CITY OF JACKSONVILLE CODE REQUIREMENTS

SECTION	REQUIRED	PROVIDED
SECTION 656.1214		
5% OF VJA AREA (67,000 S.F.)	3,350 S.F.	3,350 S.F.
25% SHRUBS	837 S.F.	837 S.F.
TREE COVERAGE (1/4,000 S.F.)	17 TREES	17 TREES
SHADE TREES 50%	9 TREES	9 TREES
SECTION 656.1215		
NORTH BOUNDARY: 171 FEET		
LANDSCAPE AREA	5' WIDE (855 S.F.)	20' WIDE (3,520 S.F.)
TREES (1/50 LF)	3 TREES	17 TREES
SHADE TREES (50%)	2 TREES	17 TREES
SOUTH BOUNDARY: 168 FEET		
LANDSCAPE AREA	5' WIDE (840 S.F.)	5' WIDE (865 S.F.)
TREES (1/50 LF)	3 TREES	4 TREES
SHADE TREES (50%)	2 TREES	3 TREES
EAST BOUNDARY: 382 FEET		
LANDSCAPE AREA	10' WIDE (3,820 S.F.)	10' WIDE (3,830 S.F.)
TREES (1/50 LF)	8 TREES	14 TREES
SHADE TREES (50%)	4 TREES	8 TREES
WEST BOUNDARY: 404 FEET		
LANDSCAPE AREA	5' WIDE (2,020 S.F.)	10' WIDE (4,040 S.F.)
TREES (1/50 LF)	8 TREES	13 TREES
SHADE TREES (50%)	4 TREES	9 TREES
BUFFER AND GREEN SPACE:	10,885 S.F.	12,255 S.F.

ALL TREES AND SHRUBS MEET THE MINIMUM SIZE STANDARDS FOR FLORIDA #1 SPECIFICATIONS

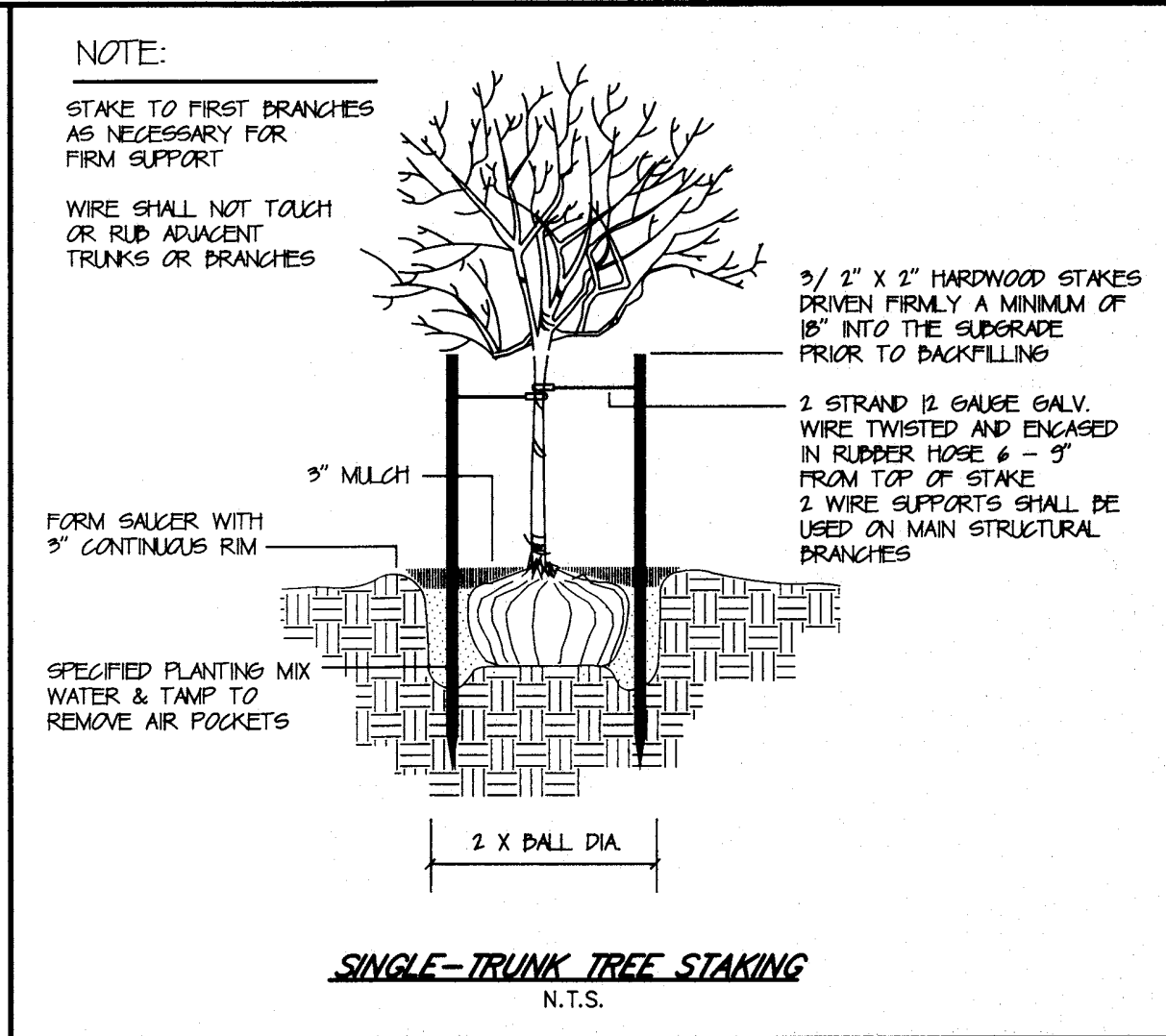
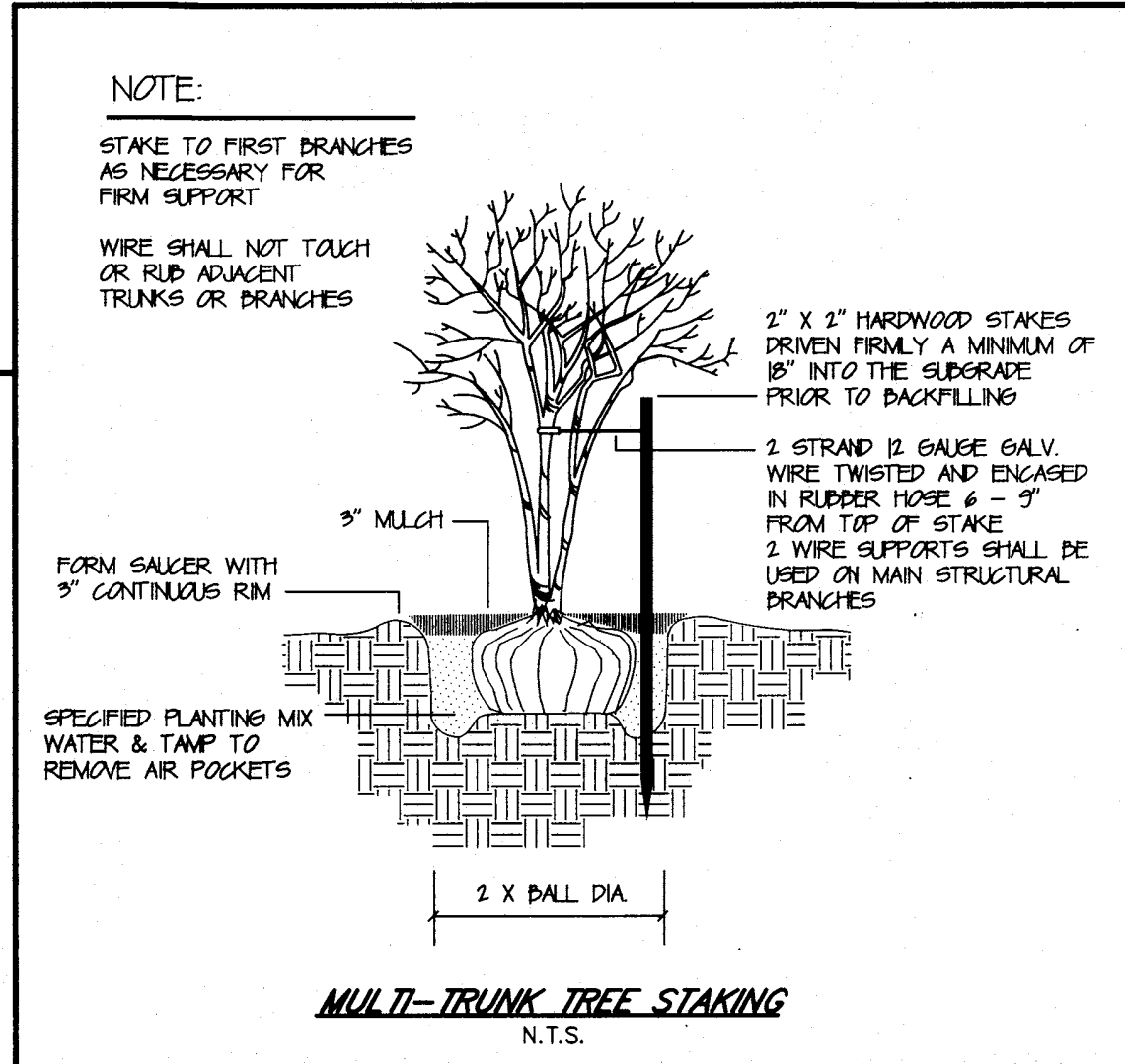
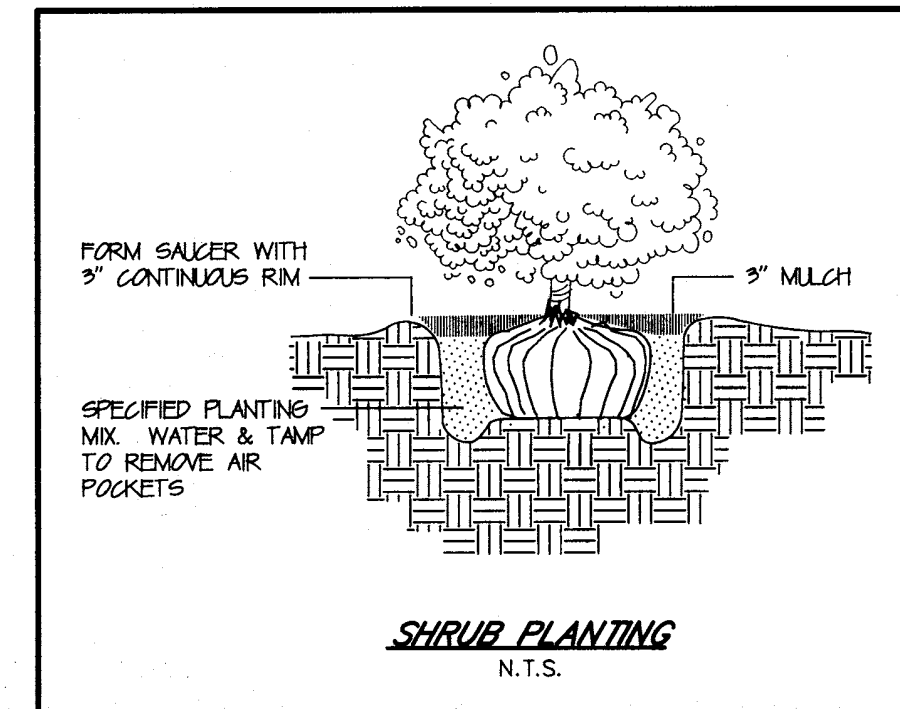


SURVEY LEGEND

- R/W = RIGHT OF WAY
- O.R.B. = OFFICIAL RECORDS BOOK
- FND = FOUND
- CONC = CONCRETE
- CLF = CHAINLINK FENCE
- MES = MITRED END SECTION
- [80.0'] = PERPENDICULAR BUILDING TIE
- ☐ = POWER POLE
- = GUY ANCHOR
- ⊕ = SIGN
- ⊕ = TELEPHONE PEDESTAL
- ⊕ = ELECTRIC BOX
- = FOUND 1/2" IRON PIPE "LB 1381" (UNLESS NOTED OTHERWISE)

TREE LEGEND

- ☉ EXISTING OFFSITE TREE
- ☉ EXISTING TREE TO REMAIN WITH BARRICADE AS REQUIRED
- ☉ PROPOSED TREE SEE PLANT SCHEDULE
- ☉ PROPOSED TREE SEE PLANT SCHEDULE
- ☉ PROPOSED TREE SEE PLANT SCHEDULE



J. LUCAS & ASSOCIATES, INC.
CONSULTING AND DESIGN ENGINEERS
CERTIFICATE OF AUTHORIZATION NO. 3981
1305 CEDAR STREET - JACKSONVILLE, FL 32207
PH (904) 396-3060 FAX (904) 396-3456

VERSION: ACAD14
DRAWN BY: DAD
DESIGNED BY: JML
APPROVED BY: JML
DATE: OCT. 2020

NO.	REVISION	BY	DATE
2	ADDED EXISTING PUMP HOUSE	DAD	4/9/21
1	REVISED PER CITY REVIEW	DAD	2/2/21

**LANDSCAPE PLAN OF
NEW KINGS RD. TRUCK FACILITY
FOR
FLYING COLORS GROUP, INC.**

DRAWING NO. 3 OF 6
JOB NO. 2015
FILE: 2015

SEAL & SIGNATURE:
JAMES M. LUCAS, P.E. 18370