

2701 N KILDARE

CHICAGO, ILLINOIS

203,518- DIVISIBLE SF
AVAILABLE



Property Highlights

CHICAGO, ILLINOIS

203,518 SF
TOTAL BUILDING SIZE

5.65 ACRES
TOTAL SITE SIZE

12
LOADING DOCKS

163,740 SF
FLOOR 1

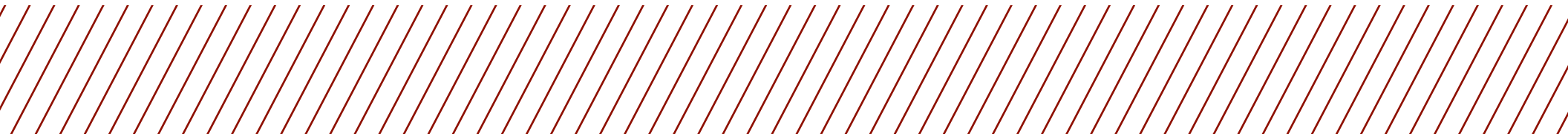
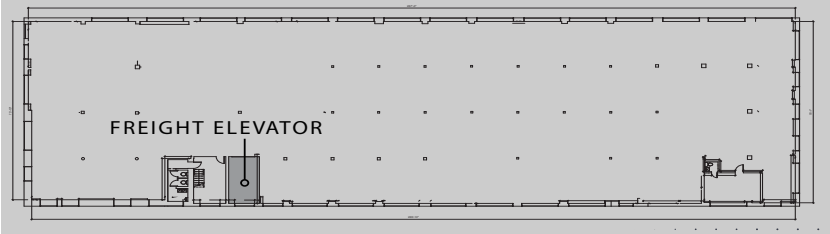
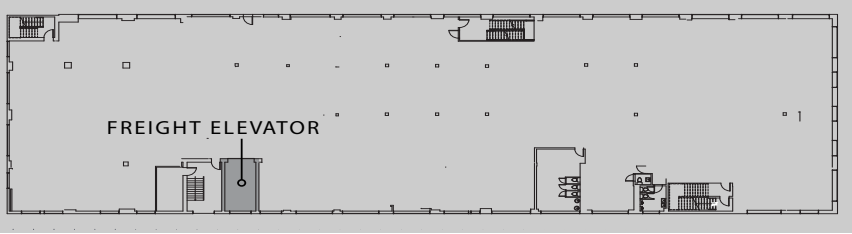
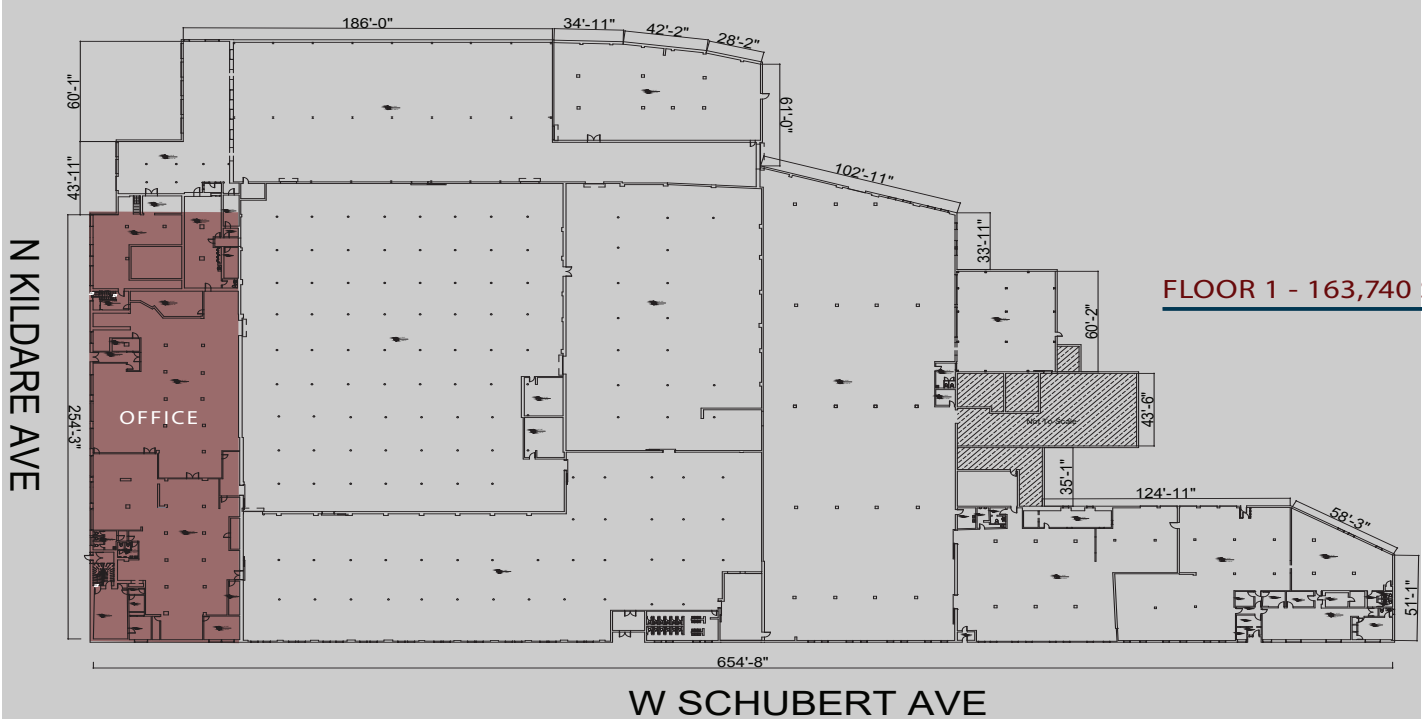
19,760 SF
FLOOR 2

20,018 SF
FLOOR 3



Site Plan

CHICAGO, ILLINOIS



Aerial Map

CHICAGO , ILLINOIS



2701 N Kildare

2701 N KILDARE

CHICAGO, ILLINOIS

203,518-DIVISIBLE SF
AVAILABLE



9500 West Bryn Mawr Ave, Suite 6000
Rosemont, Illinois 60018
cushmanwakefield.com

Steve Stone

Managing Director
steve.stone@cushwake.com
+1 847 720 1364

Colin Green

Senior Vice President
colin.s.green@cbre.com
+1 312 334 7702

Matt Cowie

Senior Vice President
matt.cowie@cbre.com
+1 312 334 7203