



THE WALKER

352 South Walker Street
Cary, North Carolina 27511

JENN OLEVITCH-ROBERSON

jolevitch-roberson@lee-associates.com
O 919.576.2517
M 919.345.1752

CHIP LANIER, MBA

clanier@lee-associates.com
O 919.576.2516
M 919.291.6282

LOUP GAJIGIANIS

lgajigianis@lee-associates.com
O 984.684.5008
M 919.338.4018



COMMERCIAL REAL ESTATE SERVICES
RALEIGH • DURHAM • WILMINGTON

THE WALKER

LUXURY APARTMENTS & RETAIL

352 S WALKER STREET, CARY, NC 27511

The Walker is located in the heart of historic downtown Cary, adjacent to the Town of Cary's seven-acre park and new library. The development, which features 158 luxury residential units, is just minutes from both Raleigh and Durham and a quick walk to local restaurants, bakeries, parks and art venues. The Walker is 15 minutes from Research Triangle Park and Raleigh-Durham International Airport.

- » Up to 5,908 SF of prime retail for lease, Can be demised
- » Prominent building signage available
- » Direct access to ample parking in the adjoining deck
- » Immediately adjacent to the new seven-acre Downtown Cary Park within the Downtown Cary Park Social District
- » Walkable downtown settings with nearby destinations including the Downtown Park, Cary Art Center, Cary Regional Library, Bond Brothers Beer Company, Sidebar, La Farm Bakery, Scratch, and Brew Coffee
- » Local, proven developer and owner

THE WALKER

SITE PLAN



Jenn Olevitch-Roberson
jolevitch-roberson@lee-associates.com
O 919.576.2517
C 919.345.1752

Chip Lanier, MBA, CLS, CRX, CSM, PMP
clanier@lee-associates.com
O 919.576.2516
C 919.291.6282

Loup Gajigianis
lgajigianis@lee-associates.com
O 984.684.5008
M 919.338.4018



RETAIL SPACE



Jenn Olevitch-Roberson
jolevitch-roberson@lee-associates.com
O 919.576.2517
C 919.345.1752

Chip Lanier, MBA, CLS, CRX, CSM, PMP
clanier@lee-associates.com
O 919.576.2516
C 919.291.6282

Loup Gajigianis
lgajigianis@lee-associates.com
O 984.684.5008
M 919.338.4018



RESTAURANTS, RETAIL, BREWERIES AND MORE IN DOWNTOWN CARY:

RESTAURANTS & CAFES

- | | |
|-----------------------------------|-----------------------------------|
| 1. Annelore's German Bakery | 12. Esteamed Coffee |
| 2. Bosphorus | 13. Di Fara Pizza Tavern |
| 3. Upper Deck Sports Pub | 14. Hank's Downtown Dive |
| 4. Neighborhood Sports Bar | 15. BREW Coffee Bar |
| 5. Roma's Italian Deli & Pizzeria | 16. FRESH. Local Ice Cream |
| 6. La Farm Bakery | 17. Crosstown Pub & Grill |
| 7. Kababish Cafe | 18. Daybreak |
| 8. Academy Street Bistro | 19. Scratch Kitchen & Taproom |
| 9. Ashworth Drugs | 20. Big Dom's Bagel |
| 10. Once in a Blue Moon Bakery | 21. Pizzeria Faulisi |
| 11. Serendipity Deli | 22. Pro's Epicurean Market & Cafe |
| | 23. MC Restaurant |

BREWERIES & BARS

- | | |
|-------------------------------|-------------------------------|
| 1. Triangle Beer Co. | 5. Pharmacy Bottle + Beverage |
| 2. SideBar | |
| 3. Bond Brothers | |
| 4. Chatham Street Wine Market | |

RETAIL

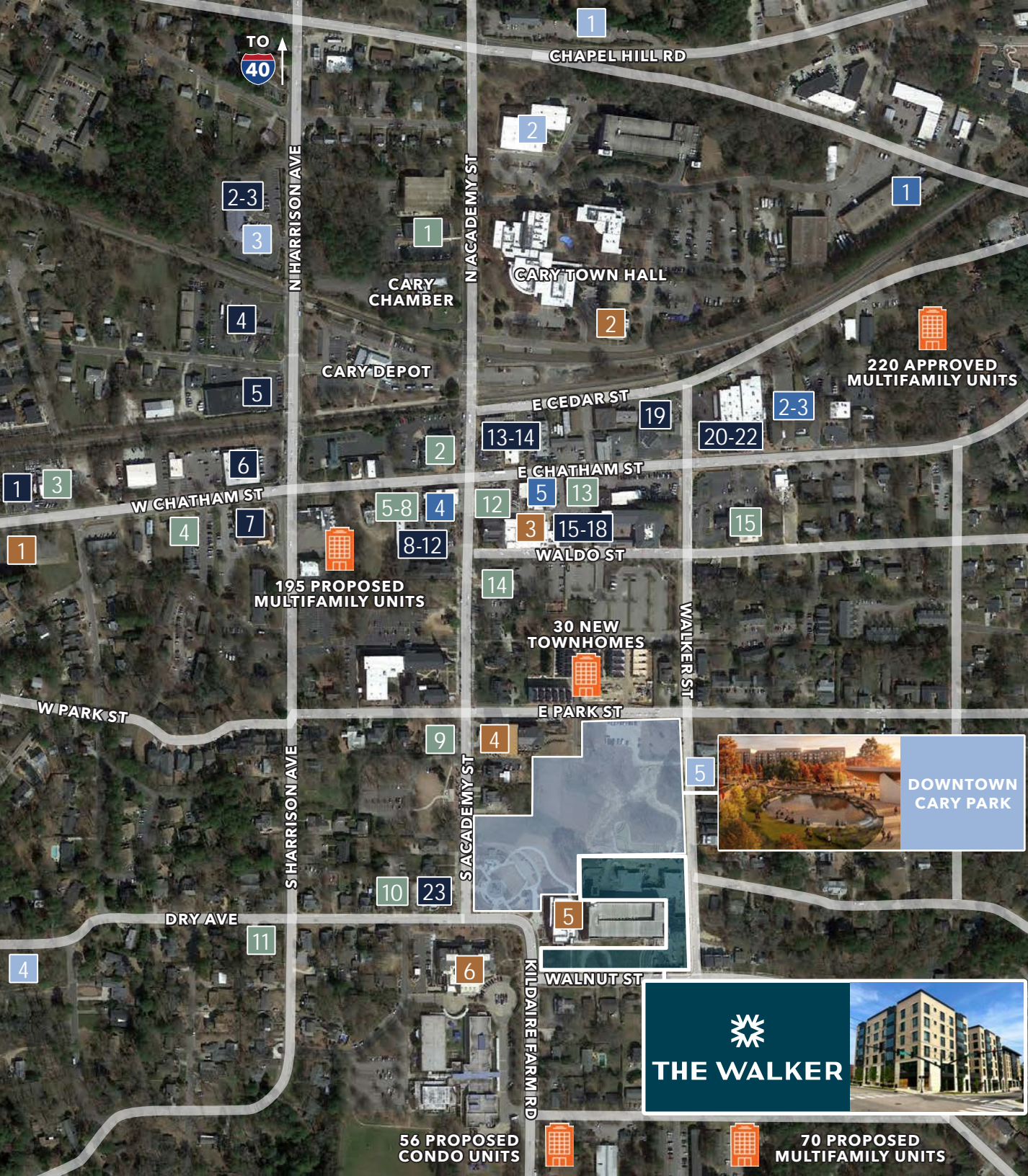
- | | |
|---------------------------|--------------------------------|
| 1. First Bank | 9. Lana Addison Bridal |
| 2. Fidelity Bank | 10. Cary Pottery |
| 3. CJ Autosport | 11. Stonehaven Jewelry Gallery |
| 4. Cary Florist | 12. Kitchen & Bath Galleries |
| 5. Cary Farmers Market | 13. Johnson's Jewelers |
| 6. Peak Olive Oil Company | 14. US Postal Service |
| 7. Warm 'n Fuzzy | 15. The Perfect Piece |
| 8. Vintage Vogue | |

FITNESS & RECREATION

- | | |
|--------------------------------------|-----------------------|
| 1. Aradia Fitness Cary | 3. Ignium Strength |
| 2. Herbert C. Young Community Center | 4. Heater Park |
| | 5. Downtown Cary Park |

ENTERTAINMENT & VENUES

- | | |
|----------------------------|---------------------------------|
| 1. The Matthews House | 4. The Mayton |
| 2. Page-Walker Arts Center | 5. Cary Regional Library Center |
| 3. The Cary Theater | 6. Cary Arts Center |



56 PROPOSED CONDO UNITS

70 PROPOSED MULTIFAMILY UNITS

220 APPROVED MULTIFAMILY UNITS

195 PROPOSED MULTIFAMILY UNITS

30 NEW TOWNHOMES

DOWNTOWN CARY PARK

CARY

NORTH CAROLINA

Cary is a thriving community in the heart of the Research Triangle region of North Carolina, a highly desirable location for people and businesses.

Since 1990, the population has surged from 45,000 to more than 171,000 people. New residents are met with a strong economy, top-notch education, a charming downtown, beautiful parks and outdoor spaces, and a welcoming community.

Robust transportation infrastructure puts Cary within a 10-minute drive of the Research Triangle Park, Raleigh-Durham International Airport, and other major employment centers.

With three top-ranked research universities nearby, innovation, technology, and creativity are ingrained within Cary. It's exceptional quality of life and opportunities for business make Cary a magnet for new investment.

NO. 1
RECESSION-RESISTANT
CITY IN NC
(SMARTASSET, 2020)

NO. 2
BEST PLACES TO LIVE
IN AMERICA
(RALEIGH-DURHAM, US NEWS, 2021)

67.8%
POPULATION WITH
BACHELOR'S DEGREE
OR HIGHER



THE RESEARCH TRIANGLE REGION comprises the Raleigh-Durham-Chapel Hill CSA and has more than two million residents. The region is home to some of the fastest growing companies in the world. Innovation, education and a culture of collaboration are key drivers of the area's success.

NO. 1
FOR JOBS AND
EARNINGS
(RALEIGH MSA - CHECKR, 2025)

NO. 2
QUALITY OF LIFE
INDEX
(RALEIGH MSA - NUMBEO)

NO. 5
BEST PLACE TO
LIVE IN THE U.S.
(US NEWS & WORLD REPORT, 2025)

DEMOGRAPHICS

	1 MILE	3 MILES	5 MILES
POPULATION			
2030 Projection	12,011	88,218	201,113
2021 Estimate	10,759	85,233	193,186
2010 Census	9,412	72,713	160,829
Growth 2025 - 2030	2.2%	0.7%	0.8%
Daytime Population	13,022	98,613	239,841
AVERAGE HOUSEHOLD INCOME			
2030 Projection	\$134,614	\$151,662	\$164,024
2025 Estimate	\$119,561	\$137,529	\$148,963
MEDIAN AGE			
	40.9	37.5	37.1
EDUCATION			
High School Graduate	13.8%	9.8%	8.4%
Bachelor's Degree or Higher	52.6%	64.1%	68.6%

The Town of Cary

184,267

Total Population

\$141,204

Median Household Income

73%

Bachelor's Degree or Higher

3.3%

Unemployment Rate

Source: Esri 2025



THE WALKER

PROJECT TEAM

OFFICE & RETAIL LEASING



COMMERCIAL REAL ESTATE SERVICES
RALEIGH • DURHAM • WILMINGTON

FOR RETAIL LEASING, CONTACT:

JENN OLEVITCH-ROBERSON

jolevitch-roberson@lee-associates.com

O: 919.576.2517

C: 919.345.1752

CHIP LANIER, MBA

clanier@lee-associates.com

O: 919.576.2516

C: 919.291.6282

LOUP GAJIGIANIS

lgajigianis@lee-associates.com

O: 984.684.5008

C: 919.338.4018

FOR OFFICE LEASING, CONTACT:

BRIAN FARMER

bfarmer@lee-associates.com

O: 919.576.2503

C: 919.730.6584

KARAH JENNINGS MCCONNELL

kjennings@lee-associates.com

O: 919.576.2502

C: 919.817.0705

DEVELOPER

ACADEMY PARK CARY, LLC

ARCHITECT



100 WALNUT STREET | CARY, NC 27511 | 919.576.2500 | LEERALEIGH.COM

All information furnished regarding property for sale, rental or financing is from sources deemed reliable, but no warranty or representation is made to the accuracy thereof and same is submitted to errors, omissions, change of price, rental or other conditions prior to sale, lease or financing or withdrawal without notice. No liability of any kind is to be imposed on the broker herein.