



## 1003 N Washington Ave

Lansing, Michigan 48906

### Property Highlights

- 4,407 SF of finely finished office across two floors
- Close proximity to Downtown and Old Town
- Historical designation through Ingham County
- Corner lot with 20 onsite parking spaces

### Offering Summary

Sale Price:	\$379,000
Lease Rate:	\$14.00 SF/yr (MG)
Building Size:	4,407 SF
Available SF:	4,407 SF
Lot Size:	15,516 SF

### For More Information

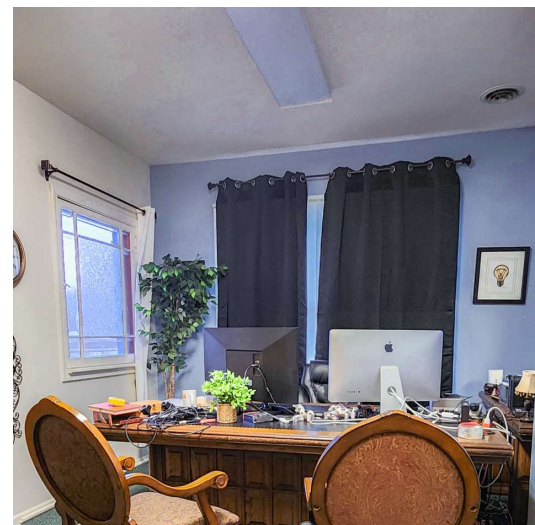
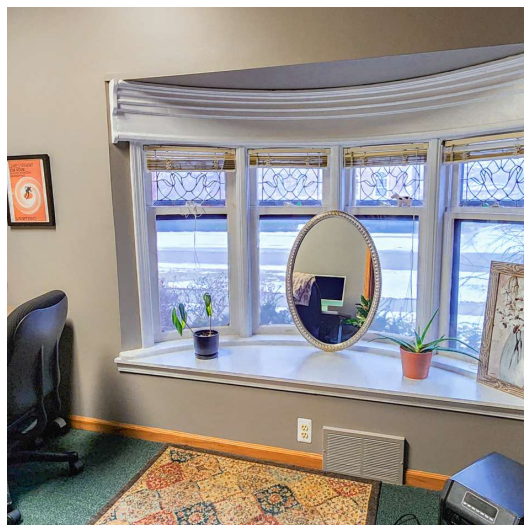
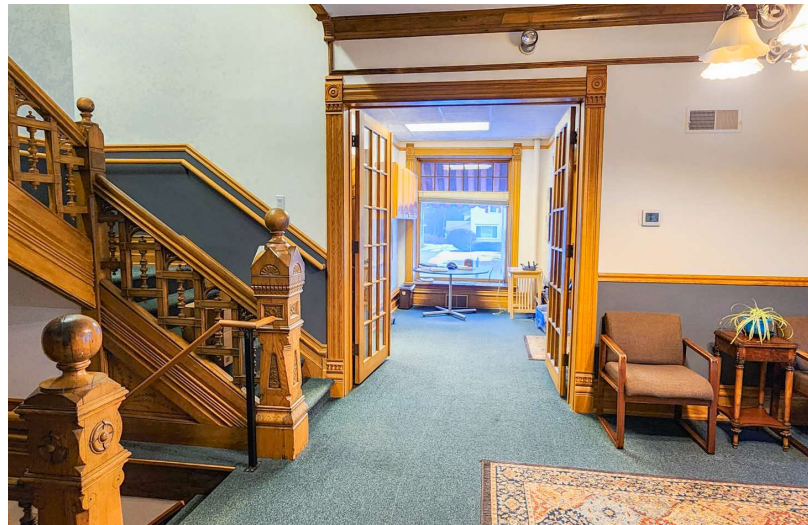


#### Jeffrey Branch

Associate Broker

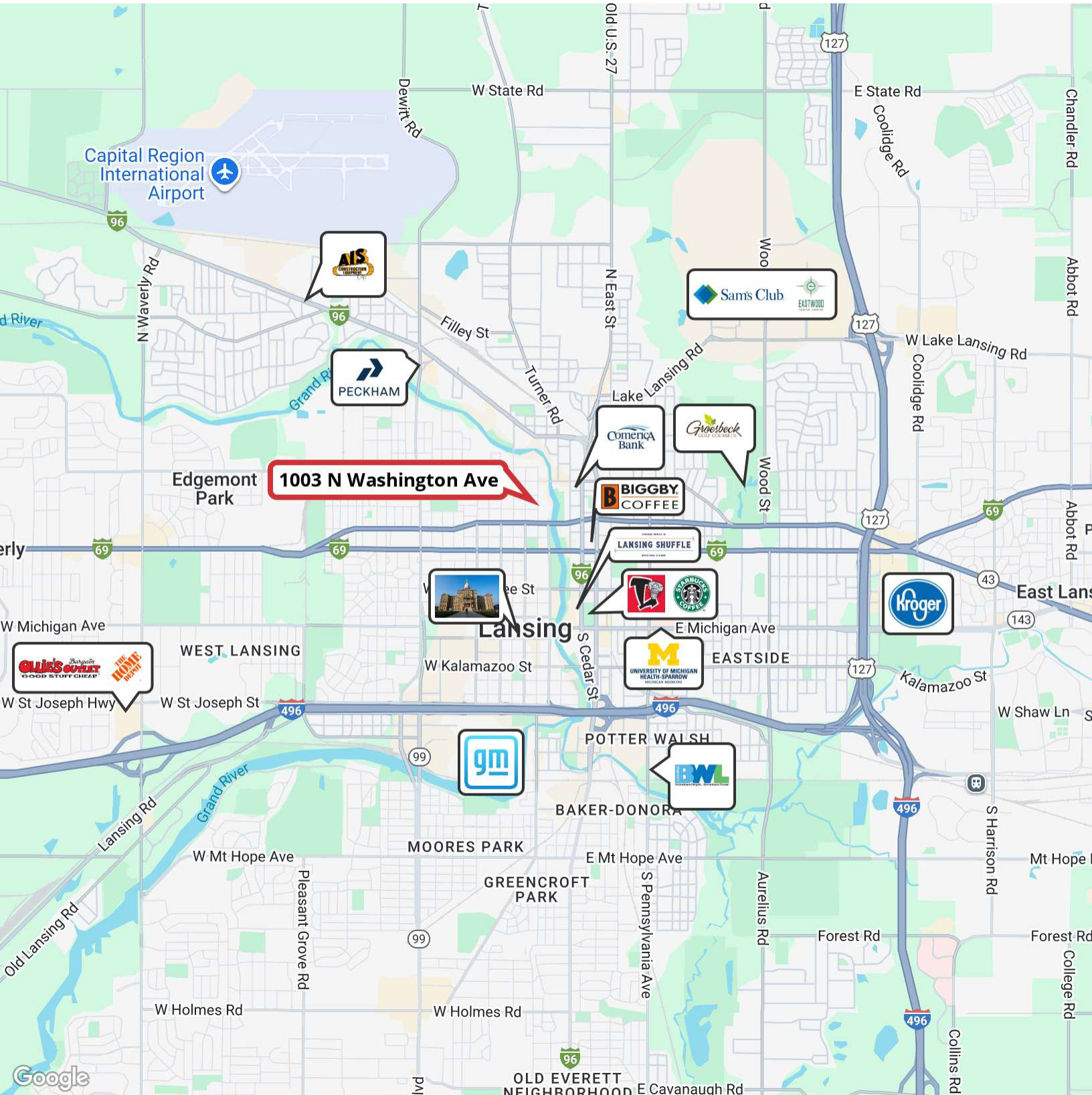
O: 517 487 9222 | C: 517 899 6368

[jbranch@naimidmichigan.com](mailto:jbranch@naimidmichigan.com)



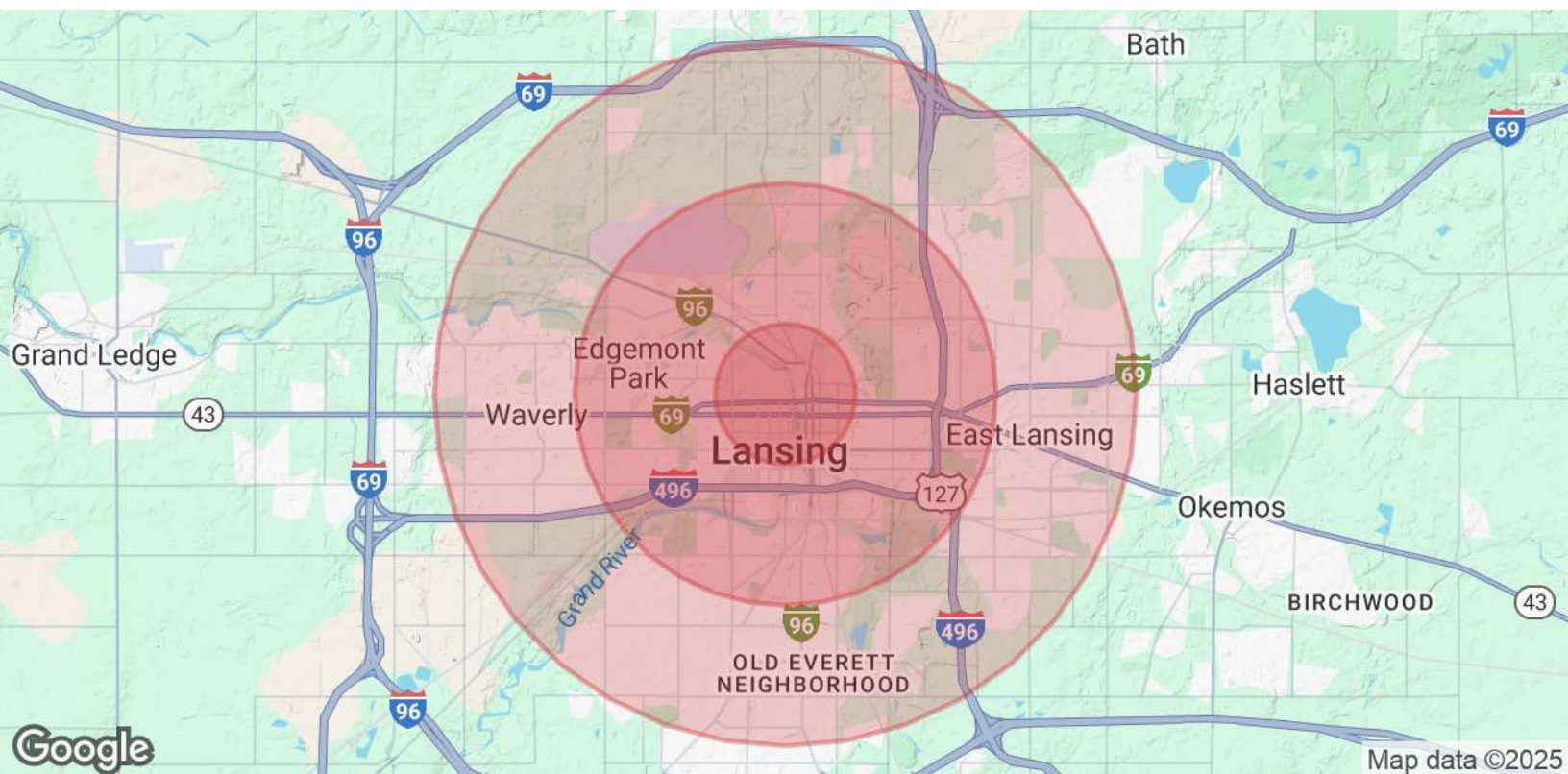
NO WARRANTY OR REPRESENTATION, EXPRESS OR IMPLIED, IS MADE AS TO THE ACCURACY OF THE INFORMATION CONTAINED HEREIN, AND THE SAME IS SUBMITTED SUBJECT TO ERRORS, OMISSIONS, CHANGE OF PRICE, RENTAL OR OTHER CONDITIONS, PRIOR SALE, LEASE OR FINANCING, OR WITHDRAWAL WITHOUT NOTICE, AND OF ANY SPECIAL LISTING CONDITIONS IMPOSED BY OUR PRINCIPALS NO WARRANTIES OR REPRESENTATIONS ARE MADE AS TO THE CONDITION OF THE PROPERTY OR ANY HAZARDS CONTAINED THEREIN ARE INTENDED TO BE IMPLIED

2149 Jolly Road, Suite 200  
Okemos, MI 48864  
517 487 9222 tel  
[naimidmichigan.com](http://naimidmichigan.com)



NO WARRANTY OR REPRESENTATION, EXPRESS OR IMPLIED, IS MADE AS TO THE ACCURACY OF THE INFORMATION CONTAINED HEREIN, AND THE SAME IS SUBMITTED SUBJECT TO ERRORS, OMISSIONS, CHANGE OF PRICE, RENTAL OR OTHER CONDITIONS. PRIOR SALE, LEASE OR FINANCING, OR WITHDRAWAL WITHOUT NOTICE, AND OF ANY SPECIAL LISTING CONDITIONS IMPOSED BY OUR PRINCIPALS NO WARRANTIES OR REPRESENTATIONS ARE MADE AS TO THE CONDITION OF THE PROPERTY OR ANY HAZARDS CONTAINED THEREIN ARE INTENDED TO BE IMPLIED

2149 Jolly Road, Suite 200  
 Okemos, MI 48864  
 517 487 9222 tel  
[naimidmichigan.com](http://naimidmichigan.com)



<b>Population</b>	<b>1 Mile</b>	<b>3 Miles</b>	<b>5 Miles</b>
Total Population	12,618	78,160	175,508
Average Age	36	38	37
Average Age (Male)	36	37	36
Average Age (Female)	36	39	38
<b>Households &amp; Income</b>	<b>1 Mile</b>	<b>3 Miles</b>	<b>5 Miles</b>
Total Households	5,757	35,342	73,636
# of Persons per HH	2.2	2.2	2.4
Average HH Income	\$57,989	\$72,882	\$74,889
Average House Value	\$127,543	\$152,052	\$189,974

Demographics data derived from AlphaMap