

BRADLEY HOUSE PHOTOS

CASA BELLA PHOTOS

ZONING

ZONING MAP

LOT CONSOLIDATION
APPLICATION

PARCEL MAP



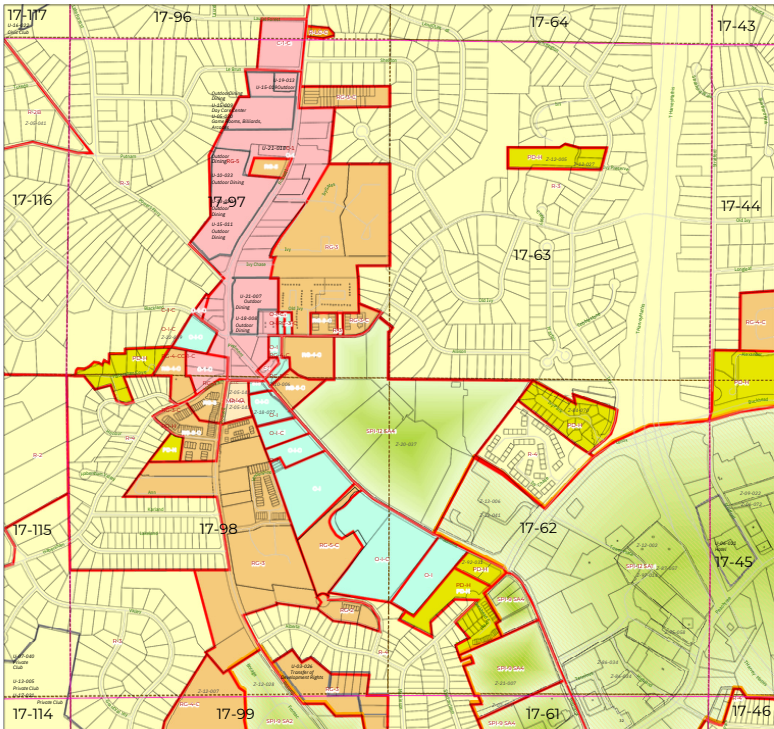
THE BRADLEY HOUSE

CASA BELLA TOWNHOMES



REGENCY BUCKHEAD CONDOMINIUMS



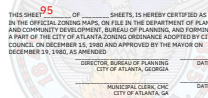


SHEET NO. 17-0-06-2

**ZONING ORDINANCE
CITY OF ATLANTA, GEORGIA
OFFICIAL ZONING MAP**

136 SHEET 95 OF _____ SHEETS
ORDINANCE 2-78-5

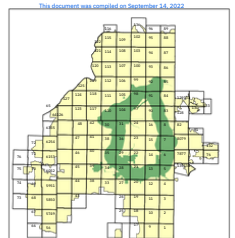
LAND LOTS _____ DISTRICT _____ COUNTY _____
CERTIFICATION
136



THIS SHEET _____ OF _____ SHEETS IS HEREBY CERTIFIED AS INCLUDED
IN THE OFFICIAL ZONING MAPS, AS FILED IN THE DEPARTMENT OF PLANNING
AND COMMUNITY DEVELOPMENT BUREAU OF PLANNING AND ZONING
A PART OF THE CITY OF ATLANTA ZONING ORDINANCE ADOPTED BY CITY
COUNCIL ON DECEMBER 16, 1998 AND APPROVED BY THE MAYOR ON
DECEMBER 19, 1998, AS AMENDED.

DIRECTOR, BUREAU OF PLANNING AND ZONING DATE _____
MUNICIPAL CLERK, CITY OF ATLANTA, GA DATE _____

- Legend**
- Quads
 - Tax Parcels
 - Zoning District Outline
 - All Others
 - Baseline
 - Mountain SDM Sign Overlay
 - InTown South Commercial Corridor
 - Marietta Street Overlay
 - Brookhaven Parking Overlay
 - Gulch Sign Overlay
 - Westside IZ Overlay
 - Westside Park Atlanta-DM
 - Arts and Entertainment Sign
 - SPS Sign Overlay
 - Fort McPherson Sign Overlay
 - All Others
 - Human Service Facilities
 - Special Use Permits
 - SITES
 - Base Zoning
 - SPS - Special Public Interest
 - Suburban
 - Historic & Cultural
 - Live-Work
 - QOL Multi-Family
 - QOL Mixed Use
 - Commercial
 - Neighborhood Commercial
 - Residential - Single Family
 - Office Institutional
 - Planned Development
 - Residential - Duplex
 - Residential - Multi-Family
 - Residential - Limited Commercial



PARCEL BOUNDARIES SHOWN ARE SUPPLIED BY THE FULTON OR DEKALB COUNTY TAX ASSESSOR. THESE BOUNDARIES MAY NOT REPRESENT THE BOUNDARIES RECOGNIZED BY THE CITY OF ATLANTA FOR THE PURPOSES OF ISSUING BUILDING PERMITS. CITY OF ATLANTA - DEPARTMENT OF PLANNING AND COMMUNITY DEVELOPMENT - OFFICE OF PLANNING - GIS DIVISION - 1500 20th STREET, N.W. - 30309-4001