

PREMIER LAB/OFFICE CAMPUS

*±154,501 Square Feet*



ALEXANDRIA®  
*Building the Future of Life-Changing Innovation®*

SOUTH SAN FRANCISCO

**600/650  
GATEWAY  
BOULEVARD**





## Campus Features



Prime location with easy  
Highway 101 access



Highly functional lab/office  
space with new facade  
and lobby



Robust MEP systems for various  
lab/office uses



Walking distance to SSF Caltrain  
station and shuttle to BART  
and ferry



**650 Gateway** - Shared  
autoclave/glass wash



650 GATEWAY BOULEVARDE



SOUTH SAN FRANCISCO



650 GATEWAY BOULEVARDE

SOUTH SAN FRANCISCO

# 600 Gateway

## ±8,711

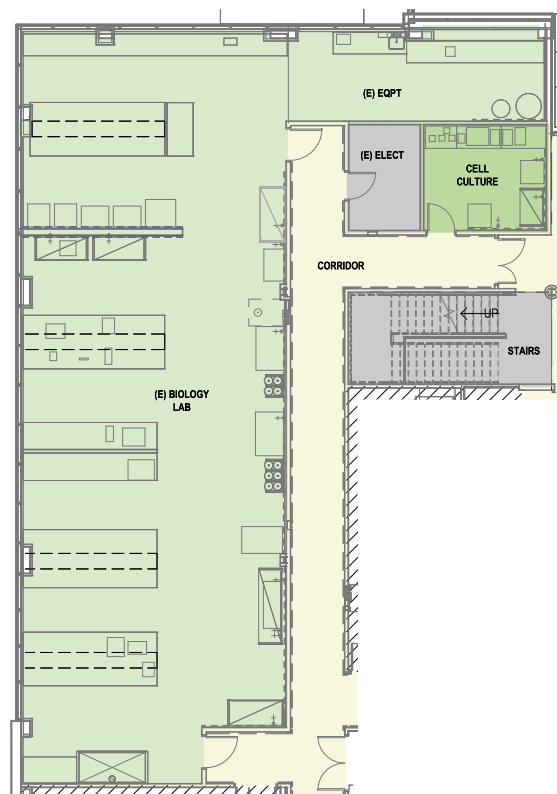
Square Feet Available

### Suite 102/201

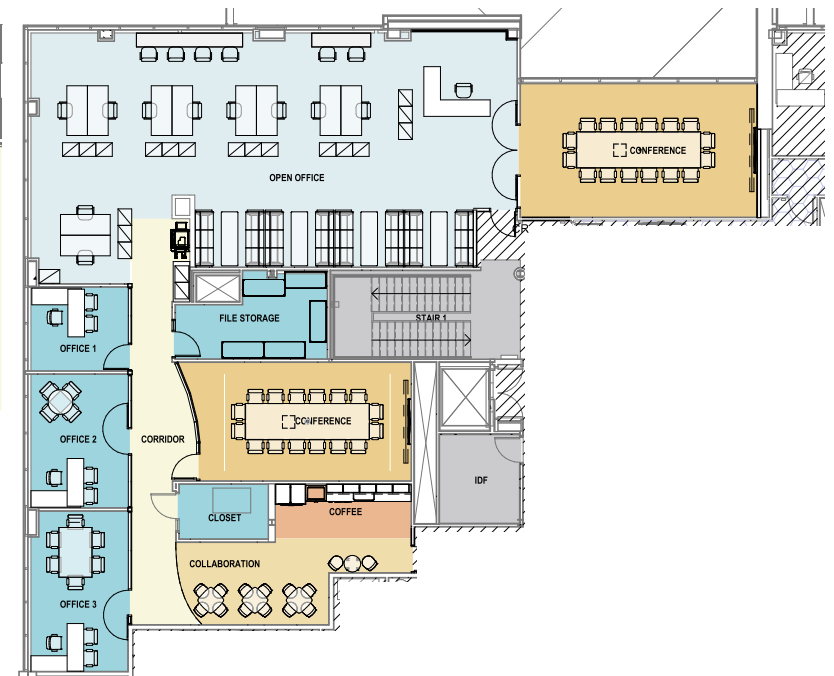
#### LEGEND

- Building Support
- Conference
- Collaboration
- Office
- Lab

### Suite 102



### Suite 201



# 650 Gateway

**±7,402**

Square Feet Available

## Ground Floor

### LEGEND

- Building Support
- Lobby/Reception
- Conference
- Collaboration
- Office
- Lab
- Leased



# 650 Gateway

**±11,942**  
Square Feet Available

## Second Floor

### LEGEND

- Building Support
- Lobby/Reception
- Conference
- Collaboration
- Office
- Lab
- Leased

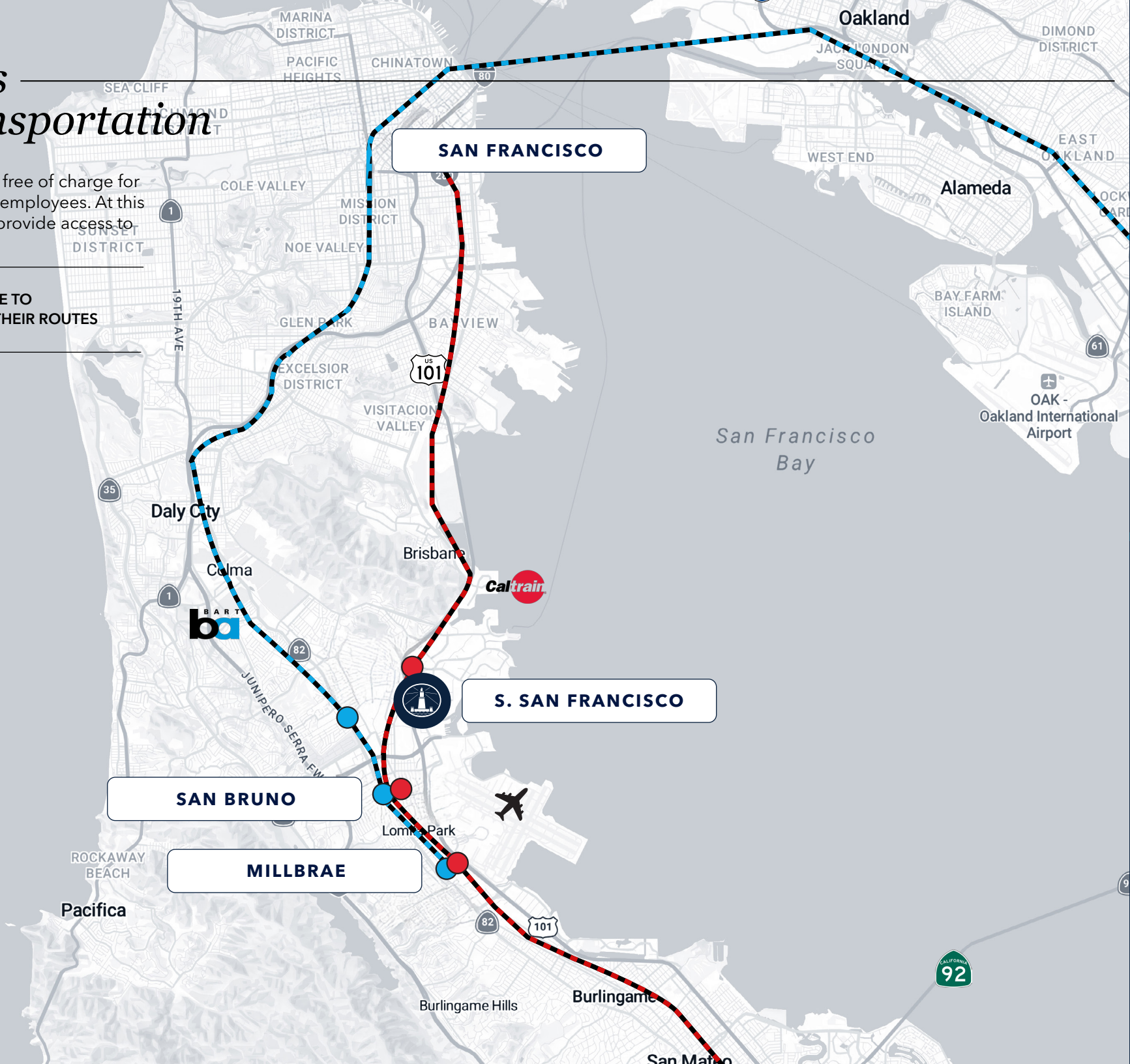


# Campus Transportation

These shuttles are free of charge for Gateway Campus employees. At this time, the shuttles provide access to Routes #1 and 2.



[CLICK HERE TO EXPLORE THEIR ROUTES](#)



15

MINS TO SSF CALTRAIN



8

MINS TO SFO



7

MINS TO SSF FERRY



# Transportation /Amenities



## RESTAURANTS

- 1 Esposto's
- 2 Two Fifty Restaurant
- 3 H. L. Peninsula Restaurant
- 4 Papa Joe's Restaurant
- 5 Peet's Coffee
- 6 Starbucks
- 7 Cafe 382
- 8 Buon Gusto
- 9 Di Napoli Ristorante & Pizzeria
- 10 Los Compadre Pizzeria
- 11 Subway
- 12 Thai Satay
- 13 Traverse - Coffee Bar & Food Hall
- 14 Focaccia Market and Bakery
- 15 Foundry & Lux
- 16 Timber & Tide
- 17 Amoura
- 18 The Cove at Oyster Point
  - Starbucks
  - Nick the Greek
  - The Sandwich Spot
  - Truffle Poke Bar



## FITNESS

- 1 Orange Theory Fitness
- 2 Yoga Six



## CHILDCARE

- 1 YMCA
- 2 ABC Family Day Care
- 3 Kinder Care College





# 650 GATEWAY BOULEVARD

SOUTH SAN FRANCISCO



## JLL

*Broker contact information*

**COLE SMITH**

Senior Managing Director  
650.480.2230  
Cole.Smith@jll.com  
Lic# 01948128

**GRANT YEATMAN**

Executive Managing Director  
510.465.9406  
Grant.Yeatman@jll.com  
Lic# 01972905

**SCOTT W. MILLER**

Vice Chairman  
650.480.2199  
ScottW.Miller@jll.com  
Lic# 01457617

*Alexandria contact information*



**ALEXANDRIA**  
*Building the Future of Life-Changing Innovation®*

**TODD MILLER**

Senior Vice President | Leasing  
650.444.1295  
tmiller@are.com

**JEANETTE LI**

Senior Director | Market Research & Leasing  
415.321.3816  
jli@are.com

ALEXANDRIA REAL ESTATE EQUITIES, INC. | Confidential and Proprietary  
| Do Not Copy or Distribute | ALL RIGHTS RESERVED © 2026