



315 11th Ave N

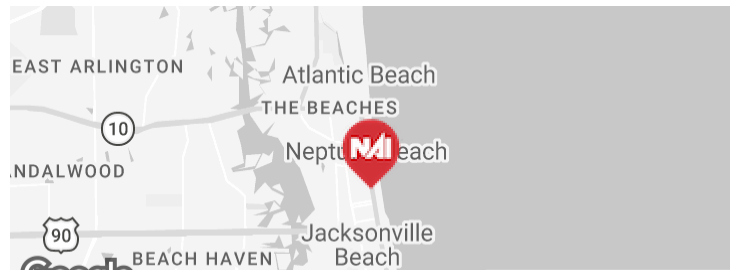
Jacksonville Beach, Florida 32250

Property Highlights

- Just off A1A in the heart of Jacksonville Beach
- Walkable to restaurants, retail, and beachfront amenities
- Strong visibility in a desirable coastal market w/pylon signage
- Easy access to major roadways and surrounding neighborhoods
- Ideal setting for attorneys, CPAs, and other professional firms

Property Overview

315 11th Ave N is located in the heart of Jacksonville Beach, just off A1A and minutes from the ocean. The property offers convenient access to major roadways and is surrounded by established retail, dining, and neighborhood amenities. Its central beachside location provides strong accessibility and visibility, making it well suited for professional office users serving the Jacksonville Beach community.



Spaces	Lease Rate	Space Size
B	\$22.00 SF/yr	1,250 SF

For More Information



Sydney Miles

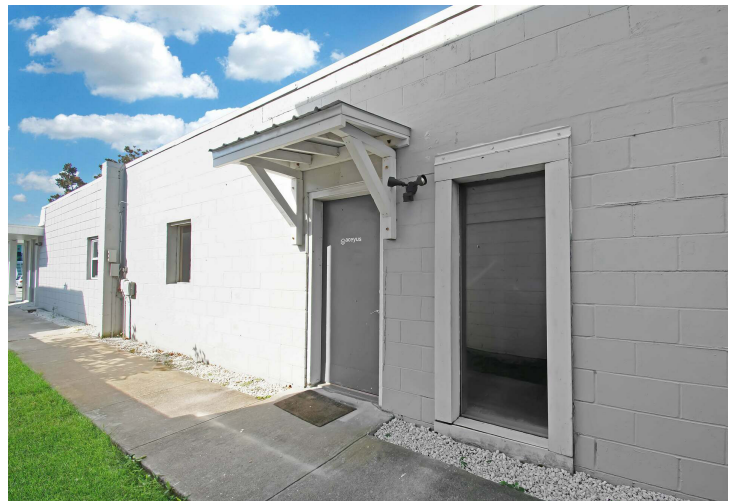
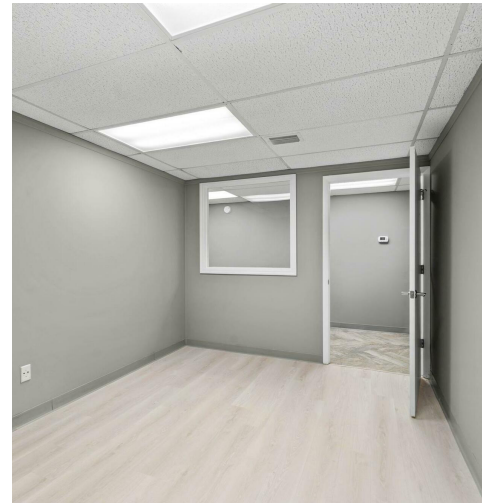
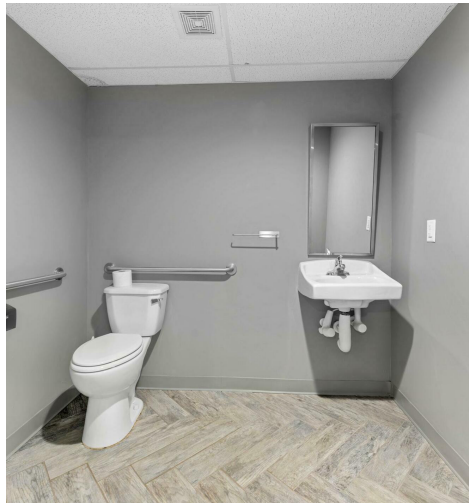
Associate
O: 904 404 5566 | C: 502 939 2900
sm@naihallmark.com

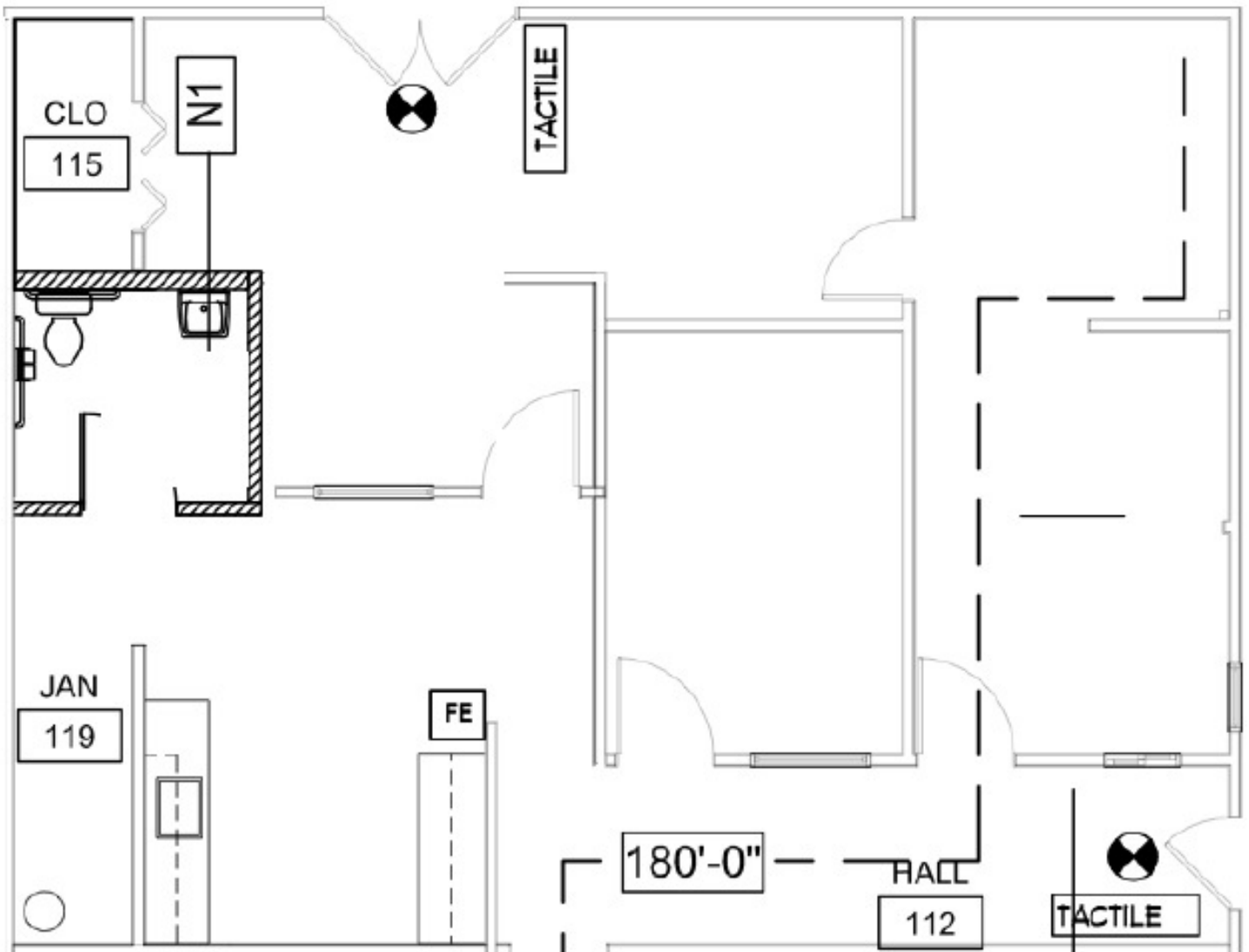


Patrick Carney

Vice President, Office Specialist
O: 904 404 4456 | C: 904 588 2508
pc@naihallmark.com

For Lease
1,250 SF | \$22 SF/yr
Office Space





For Lease
1,250 SF | \$22 SF/yr
Office Space





For Lease
1,250 SF | \$22 SF/yr
Office Space

Population	1 Mile	3 Miles	5 Miles
Total Population	10,650	46,718	99,575
Average Age	44	44	44
Average Age (Male)	43	43	43
Average Age (Female)	45	45	44

Households & Income	1 Mile	3 Miles	5 Miles
Total Households	5,221	21,296	44,107
# of Persons per HH	2	2.2	2.3
Average HH Income	\$133,797	\$140,563	\$139,467
Average House Value	\$646,107	\$644,247	\$607,439

2020 American Community Survey (ACS)