

# FOR LEASE

## 1483 WOOLSEY HEIGHTS

Colorado Springs, CO 80915



LEASE: \$16.00 MG

### Available Space Information

Site 1st Floor, Suite B

Property Type Office

Space Available 561 SF

Location Near Meadowbrook Parkway & Hwy 24

Year Built 2007



**COLE UNDERWOOD**

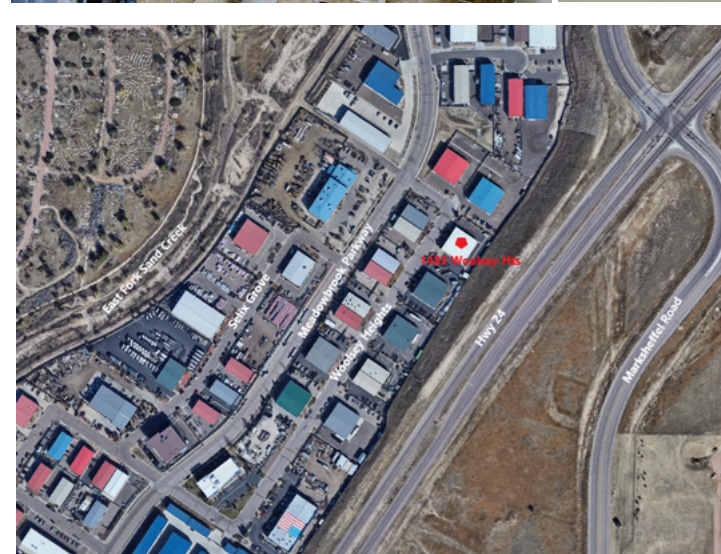
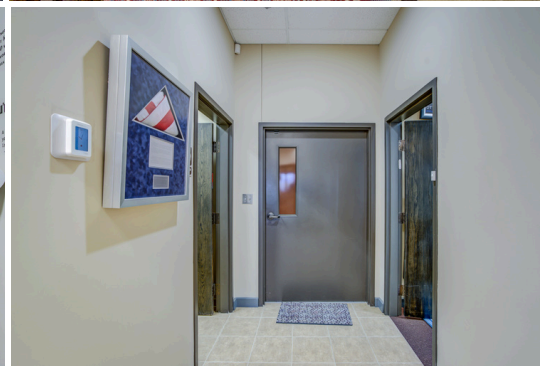
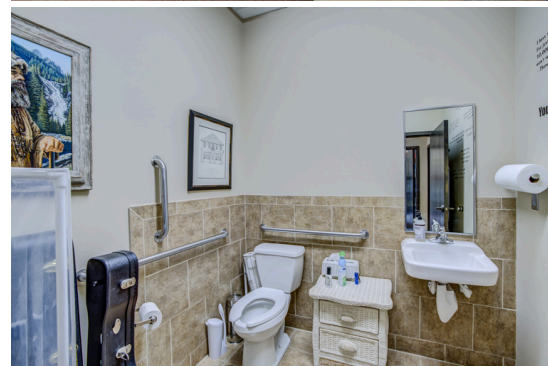
Broker Associate

Direct: (719) 200-4610

cole@coleunderwood.com



4272 Promenade Drive Suite 100  
Colorado Springs, CO 80920  
www.coleunderwood.com



## Property Description

This property offers an elegant 561 SF office space that is perfect for individual professionals or a small team. The property offers parking availability on the premises and off-street. The location is near Hwy 24 & Marksheffel and is in proximity to local amenities such as restaurants and retail. Whether you're a startup or an established business, this exceptional, move-in office space is one you will want to explore.



**COLE UNDERWOOD**  
Broker Associate  
Direct: (719) 200-4610  
cole@coleunderwood.com