

For Lease

E. 2nd St. & Kirman Ave.



[Click for a Virtual Tour](#) 

845 E. 2nd St.
Reno, NV 89502

Michael Keating, SIOR
Partner
775.386.9727
mkeating@logicCRE.com
S.0174942

Michael Dorn
Senior Associate
775.453.4436
mdorn@logicCRE.com
S.0189635

Listing Snapshot



\$1.40 NNN
Warehouse Lease Rate



± 3,500 SF
Available Square Footage



\$0.17 PSF
Net Estimate Price PSF



012-073-13
Parcel Number

Property Highlights

- 75% warehouse/ 25% office space
- Reception/entry and 2 private offices
- 10'9" clear height
- (2) 10' Grade height roll up doors
- Central heating and cooling in warehouse
- (2) Warehouse restrooms
- Warehouse sink
- Fenced yard for additional parking with 21' sliding gate
- Charter & AT&T fiber available
- Led lighting

Demographics

	1-mile	3-mile	5-mile
2025 Population	18,151	140,110	258,040
2025 Average Household Income	\$72,099	\$82,920	\$99,663
2025 Total Households	9,423	60,394	107,580

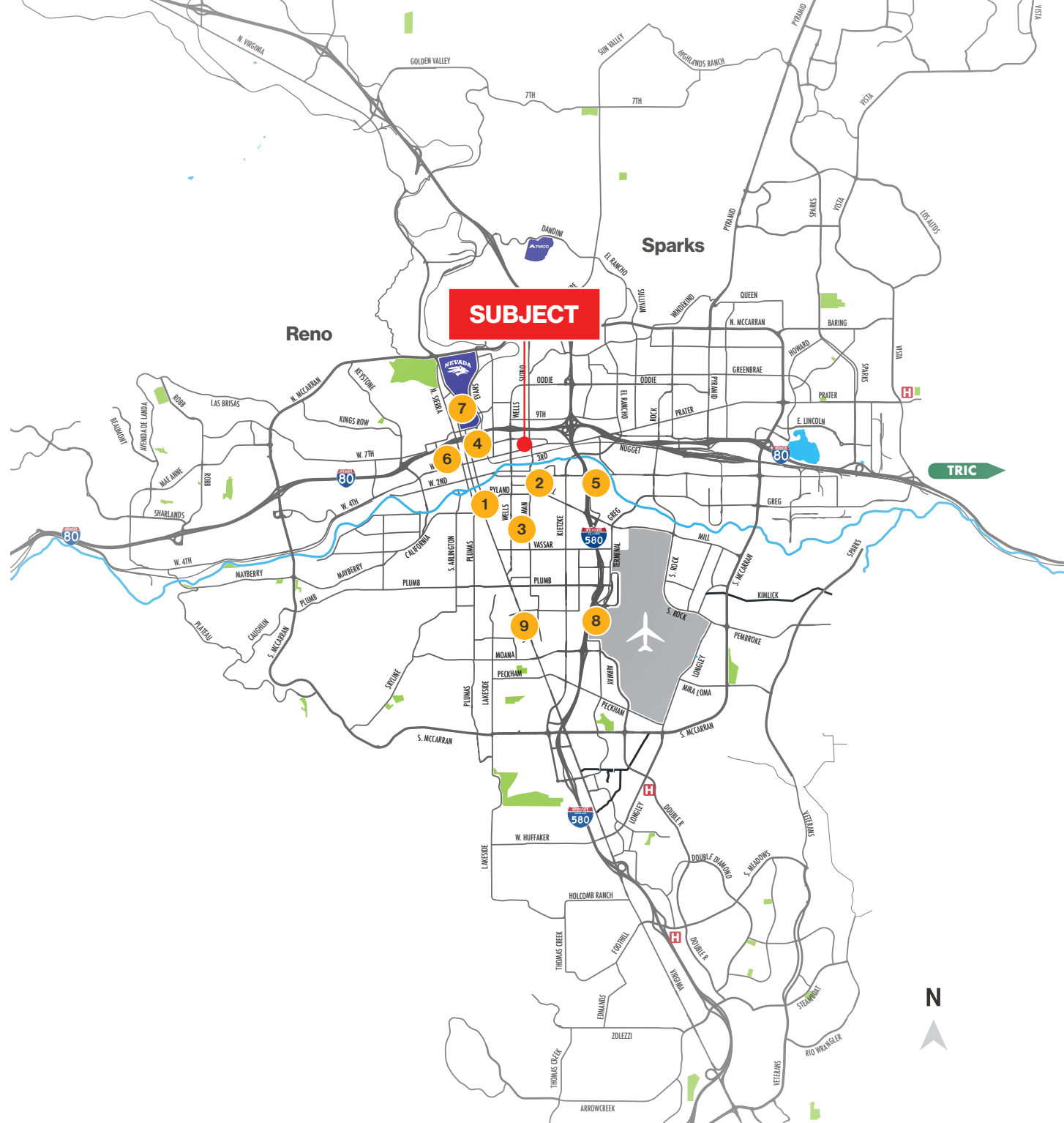


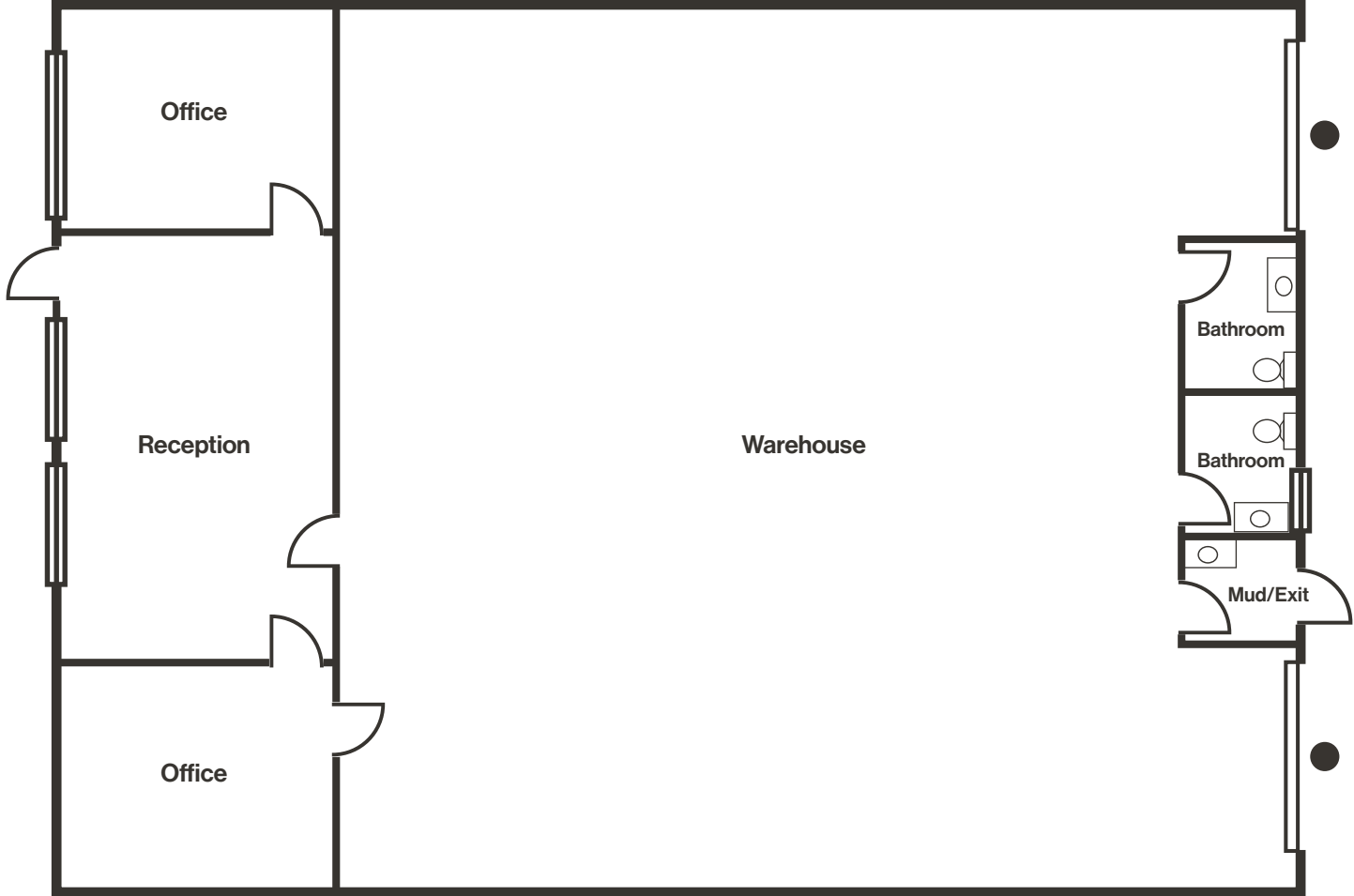
Vicinity Map

The property is strategically located in a dense and mature residential area servicing ±258,040 residents with an average household income of \$99,663 within a 5-mile radius.

Amenities within a 3-mile radius

- 1 MidTown**
- 0.37 miles
- 2 Renown Regional Medical Center**
- 0.72 miles
- 3 Reno VA Medical Center**
- 0.80 miles
- 4 Downtown Reno**
- 0.84 miles
- 5 Grand Sierra Resort and Casino**
- 1.04 miles
- 6 Saint Mary's Regional Medical Center**
- 1.08 miles
- 7 University of Nevada, Reno**
- 1.50 miles
- 8 Reno-Tahoe International Airport**
- 1.94 miles
- 9 Peppermill Resort Spa Casino**
- 2.08 miles





Property Photos



LOGIC Commercial Real Estate

Specializing in Brokerage and Receivership Services



Join our email list and
connect with us on LinkedIn

The information herein was obtained from sources deemed reliable; however LOGIC Commercial Real Estate makes no guarantees, warranties or representation as to the completeness or accuracy thereof.

For inquiries please reach out to our team.

Michael Keating, SIOR

Partner
775.386.9727
mkeating@logicCRE.com
S.0174942

Michael Dorn

Senior Associate
775.453.4436
mdorn@logicCRE.com
S.0189635