

820 Park
Avenue



FOR SALE: +/- 2,860 SF COLLECTORS DREAM

GLOBAL
COMMERCIAL

Ralph Longo - 408-529-1362
DRE# 01202211
rlongo@globalcommercialprop.com



FOR SALE: +/- 2,860 SF MAN CAVE

820 Park Avenue, San Jose, CA 95126

GLOBAL
COMMERCIAL

Ralph Longo - 408-529-1362
DRE# 01202211
rlongo@globalcommercialprop.com



View From Mezzanine



PHOTOS



View From Mezzanine



Woodshop



Mezzanine Loft

PHOTOS



Mezzanine Office



Large Open Warehouse w/Office Area & Lounge
Shop Area w/ 1 Automatic GL roll up Door
Fenced Secured Parking w/Alarm System
Zoned: CIC – General Industrial
All The Bells & Whistles
No Expense Spared
Bring Your Most Exacting Clients!

Excellent for Collector/Hobbyist/Man Cave
Access to 280 / 87 / Expressways / and SJ Airport
Fully Functioning Woodshop w/Dust Collection
New 740 SF Mezzanine w/Private Office
Month to Month Tenant in Place
Lot Size: 3,470 SF

PRICE: \$1,700,000

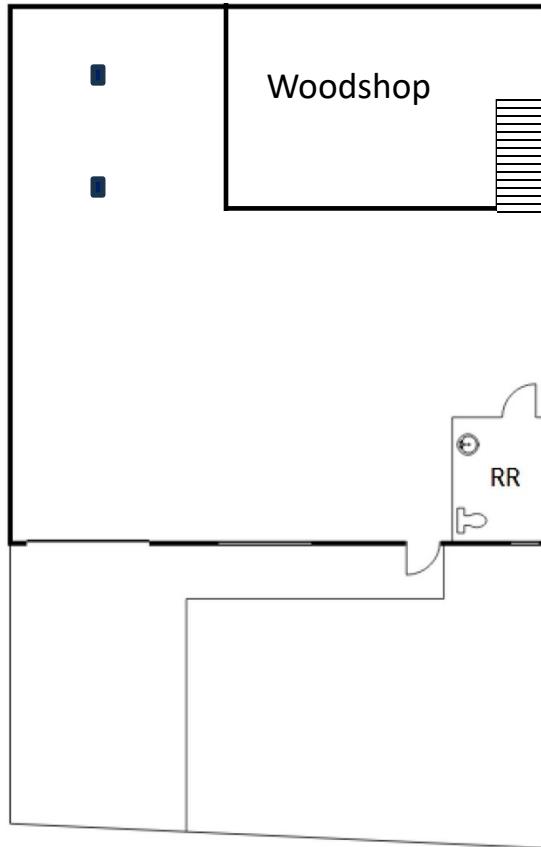


FOR SALE: +/- 2,860 SF MAN CAVE
820 Park Avenue, San Jose, CA 95126

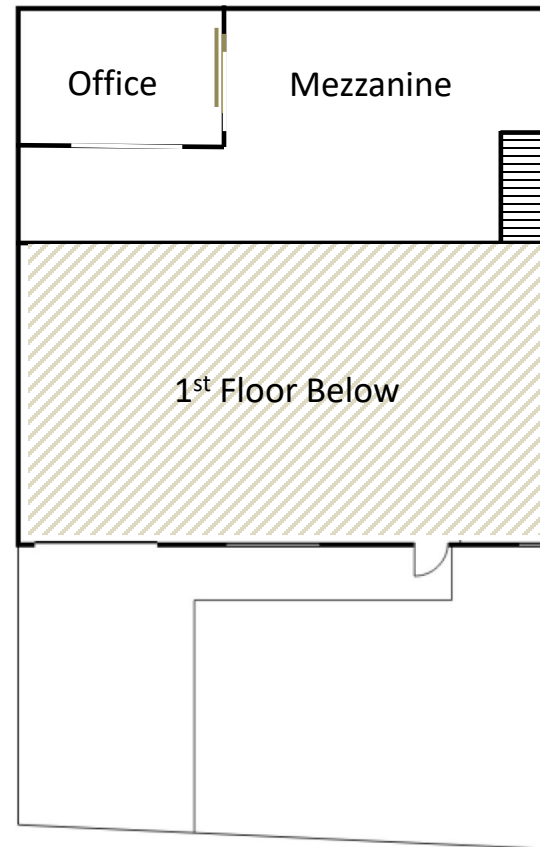
GLOBAL
COMMERCIAL

Ralph Longo - 408-529-1362
DRE# 01202211
rlongo@globalcommercialprop.com

FLOOR PLAN



1st Floor



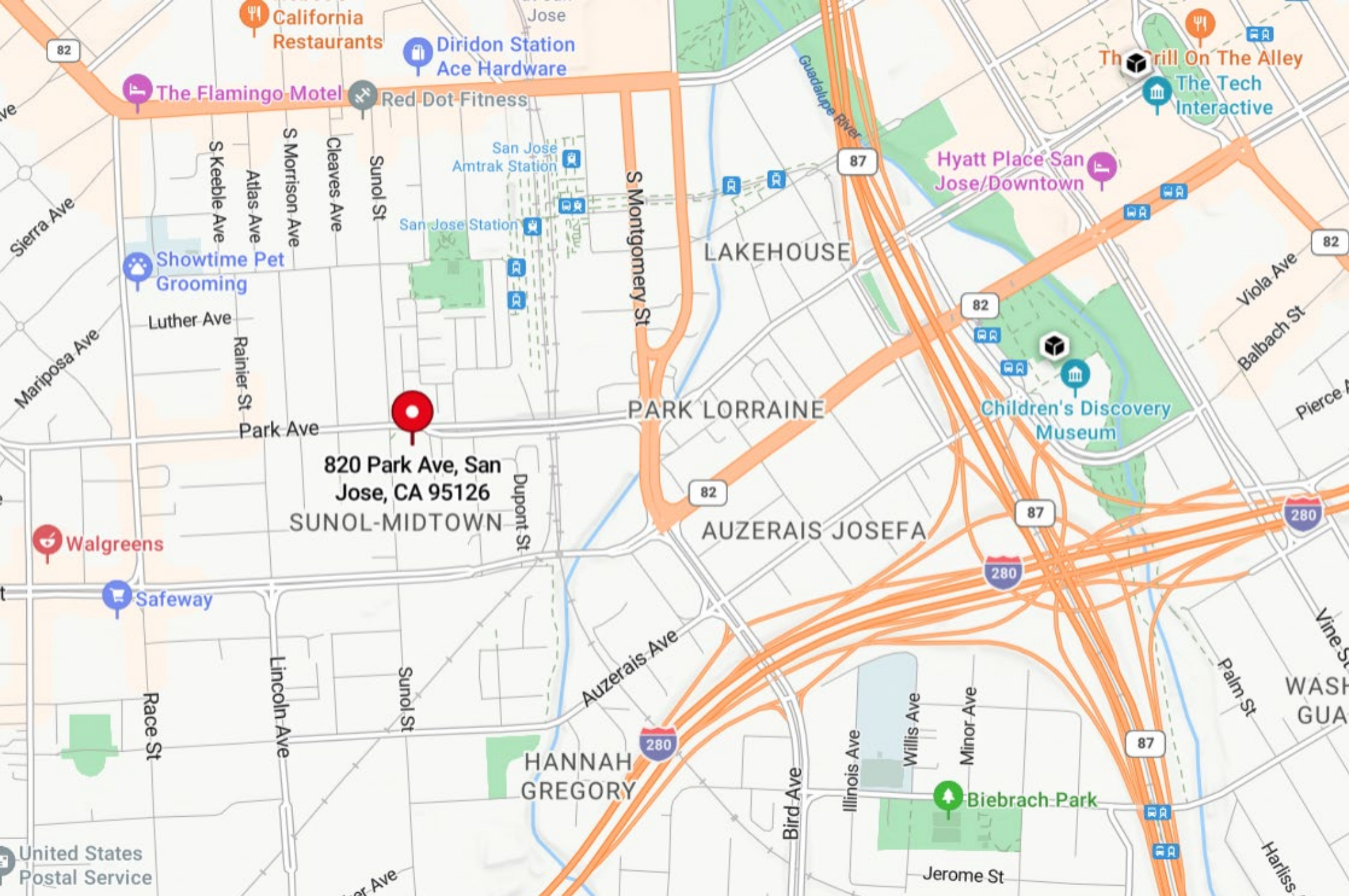
2nd Floor
Mezzanine

FOR SALE: +/- 2,860 SF COLLECTORS DREAM

820 Park Avenue, San Jose, CA 95126



Ralph Longo - 408-529-1362
DRE# 01202211
rlongo@globalcommercialprop.com



820 Park Ave, San Jose, CA 95126

DISCLAIMER

The information contained in the following Marketing Brochure is proprietary and strictly confidential. It is intended to be reviewed only by the party receiving it from Global Commercial Properties, Inc. and should not be made available to any other person or entity without consent of Global Commercial Properties, Inc. This information has been prepared to provide summary and information to prospective purchasers, for the solicitation of interest and is not an offer to sell the property. Only a fully executed Real Estate Purchase Agreement shall bind the property.

The information provided herein is deemed to be accurate and to establish only a preliminary level of interest in the subject property. The information contained herein is not a substitute for thorough due diligence investigation. Global Commercial Properties, Inc. has not made any independent investigation, and makes no warranty or representation, with respect to the present or future use or zoning of the subject property, the future projected financial performance of the property, the size measurements or boundaries of the property and improvements, ADA-related issues or compliance, the presence or absence of contaminating or hazardous substances, PCB's or asbestos, the compliance with State, Federal, County or municipal law, nor the physical condition of the improvements thereon. The information contained in this Marketing Brochure has been obtained from sources believed to be reliable; however, Global Commercial Properties, Inc. has not verified, and will not verify, any of the information contained herein, nor has Global Commercial Properties, Inc. conducted any investigation regarding these matters and makes no warranty or representation whatsoever regarding the accuracy or completeness of the information provided. Prospective purchaser is advised and agrees to make its own investigation and determination regarding all matters affecting the value, condition, utility, size, compliance with Laws, and all aspects of the Property's desirability and suitability for Purchasers intentions.

The information contained herein is subject to change without notice and the recipient of these materials shall not look to the Owner or the Broker, Global Commercial Properties, Inc., or any of their officers, employees, representatives, independent contractors or affiliates, for the accuracy or completeness thereof.

Property will be shown by appointment only. Please do not disturb occupants of the property.



Ralph Longo - 408-529-1362
DRE# 01202211
rlongo@globalcommercialprop.com

THANK YOU!

PLEASE CALL TO TOUR



Ralph Longo - 408-529-1362
DRE# 01202211
rlongo@globalcommercialprop.com