

The Colliers logo consists of the word "Colliers" in white serif font on a dark blue rectangular background with a thin yellow and red horizontal stripe at the bottom.A photograph of a modern, single-story industrial building with a light grey facade and dark grey accents. The address "8470" is visible on the upper right corner of the building. The building features several large roll-up doors and a central entrance. A paved parking area with a small tree and a ramp with a metal railing is in the foreground. A utility box labeled "A" is visible near the entrance.

8470

# For Lease | ±19,200 SF Suite with Yard

8470 Belvedere Avenue, Sacramento, CA

**Tommy Ponder, SIOR**

Executive Vice President  
+1 916 563 3005  
tommy.ponder@colliers.com  
CA Lic. 01431508

**George Vrame, SIOR**

Vice President  
+1 916 563 3041  
george.vrame@colliers.com  
CA Lic. 02028936

Colliers Sacramento  
301 University Avenue  
Suite 100  
Main: +1 916 929 5999  
colliers.com/sacramento

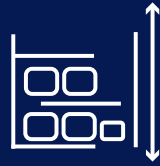
# Suite Details



Two Dock High Doors  
(1 - 14' x 12') (1 - 14' x 18')  
One Grade Level Door  
(14' x 12')



Zoned M-1S



22' - 24'  
Clear Height



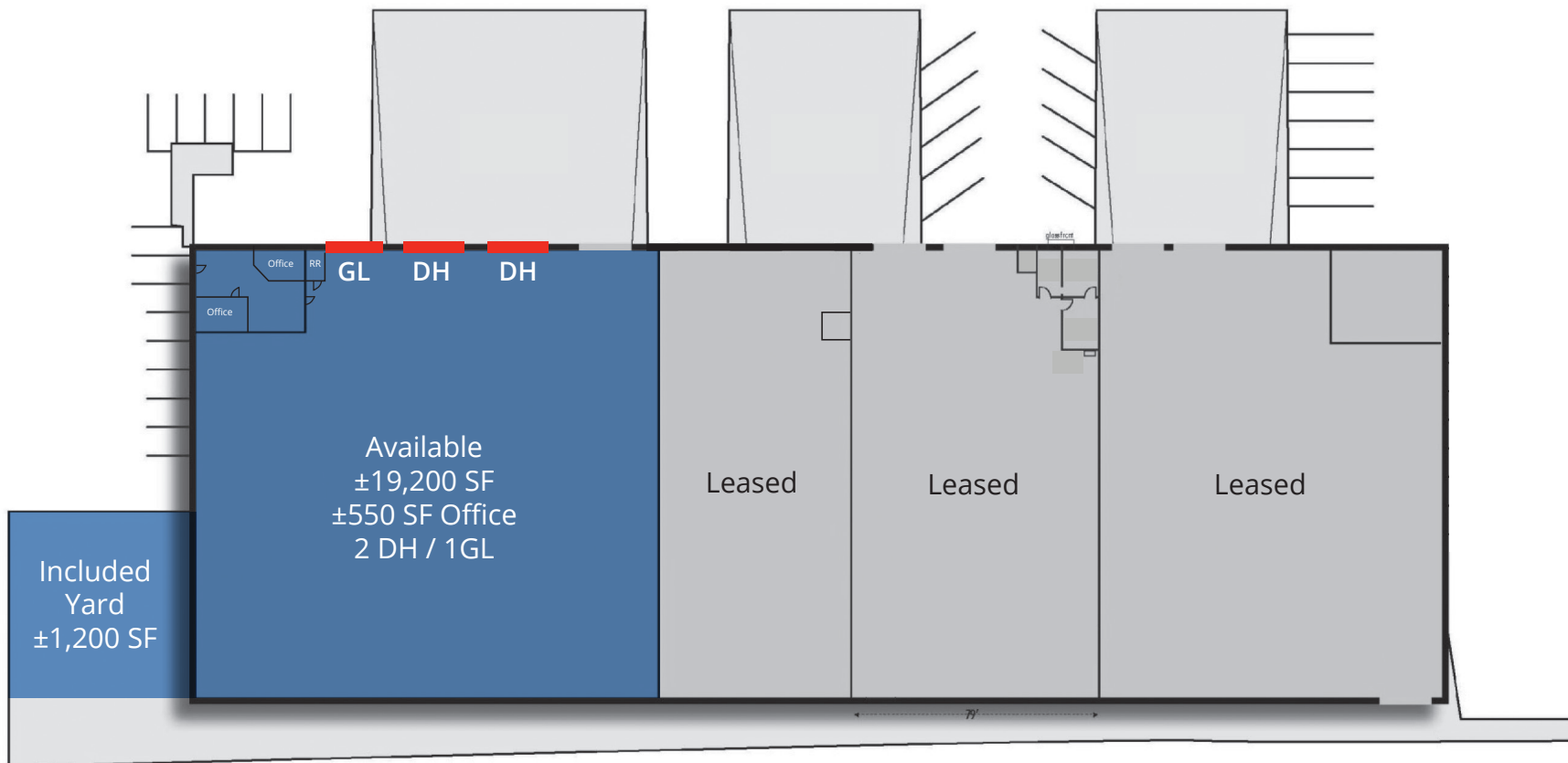
277A / 480V  
3 Phase Power  
SMUD



Natural Gas  
PG&E



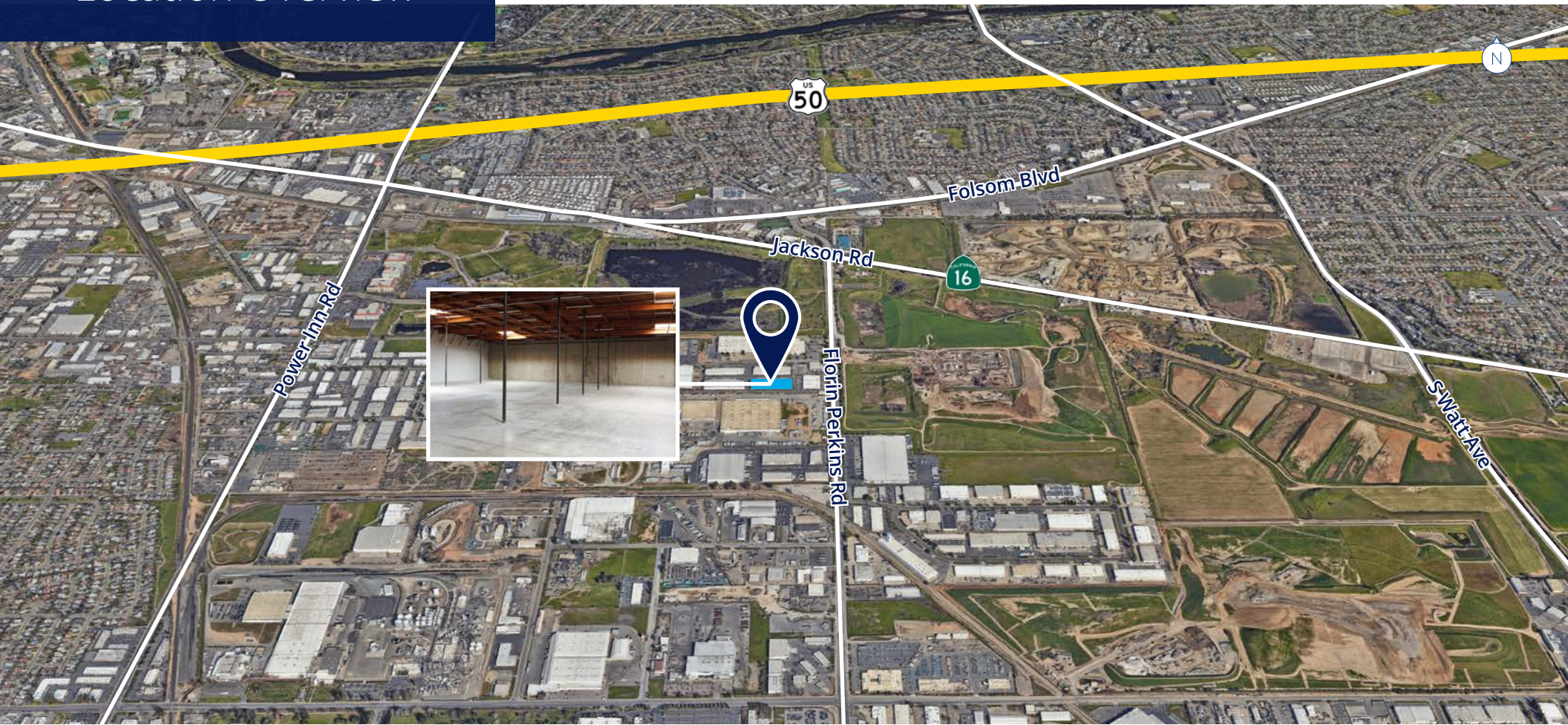
Security  
Fencing



# Property Photos



# Location Overview



**Tommy Ponder, SIOR**  
Executive Vice President  
+1 916 563 3005  
tommy.ponder@colliers.com  
CA Lic. 01431508

**George Vrame, SIOR**  
Vice President  
+1 916 563 3041  
george.vrame@colliers.com  
CA Lic. 02028936

