

SIX CORNERS MEDICAL CENTER

4211 NORTH CICERO AVENUE, CHICAGO



MOVE-IN READY, RECENTLY RENOVATED, MEDICAL
AND OFFICE SUITES FOR LEASE

CONTACT

OLIVIA WIRTH

312-770-0119

OLIVIA@CITADEL-ADVISORS.COM



HIGHLIGHTS

- MOVE-IN READY, RECENTLY RENOVATED, MEDICAL AND OFFICE SUITES FOR LEASE
- PROFESSIONALLY MANAGED MEDICAL OFFICE BUILDING WITH NEW ELEVATORS & ABUNDANT PARKING
- MONUMENT SIGNAGE WITH VISIBILITY ON CICERO (23,900 VPD)
- 0.5 MILES FROM I-90/I-94 INTERCHANGE & THE SIX CORNERS INTERSECTION OF IRVING PARK ROAD, MILWAUKEE AVENUE, AND CICERO AVENUE
- WALKING DISTANCE TO INNER CITY TRANSIT VIA THE MONTROSE BLUELINE “EL” STATION & NUMEROUS CTA BUS STOPS, AS WELL AS TRANSIT TO THE SUBURBS VIA THE MAYFAIR MD-N METRA STATION
- STATE-OF-THE-ART MULTISPECIALTY AMBULATORY SURGERY CENTER AVAILABLE FOR SALE, PARTNERSHIP, OR UTILIZATION
- X-RAY AND IMAGING SERVICES ON-SITE WITH ADJACENT MOBILE MRI COMING SOON
- CLOSE PROXIMITY TO NORTHWESTERN, ADVOCATE AURORA AND AMITA HEALTHCARE
- TIMESHARE AVAILABLE



FLOOR PLANS

LEVEL 1

SUITE 102 (400 SF)

FORMER PHARMACY WITH RECEPTION AND LAB AREA WITH SINK. GROUND FLOOR ENTRY OFF THE MAIN LOBBY.

SUITE 100/101
URGENT CARE

SUITE 102
PHARMACY



FLOOR PLANS

LEVEL 2

SUITE 210 (2,385 SF)

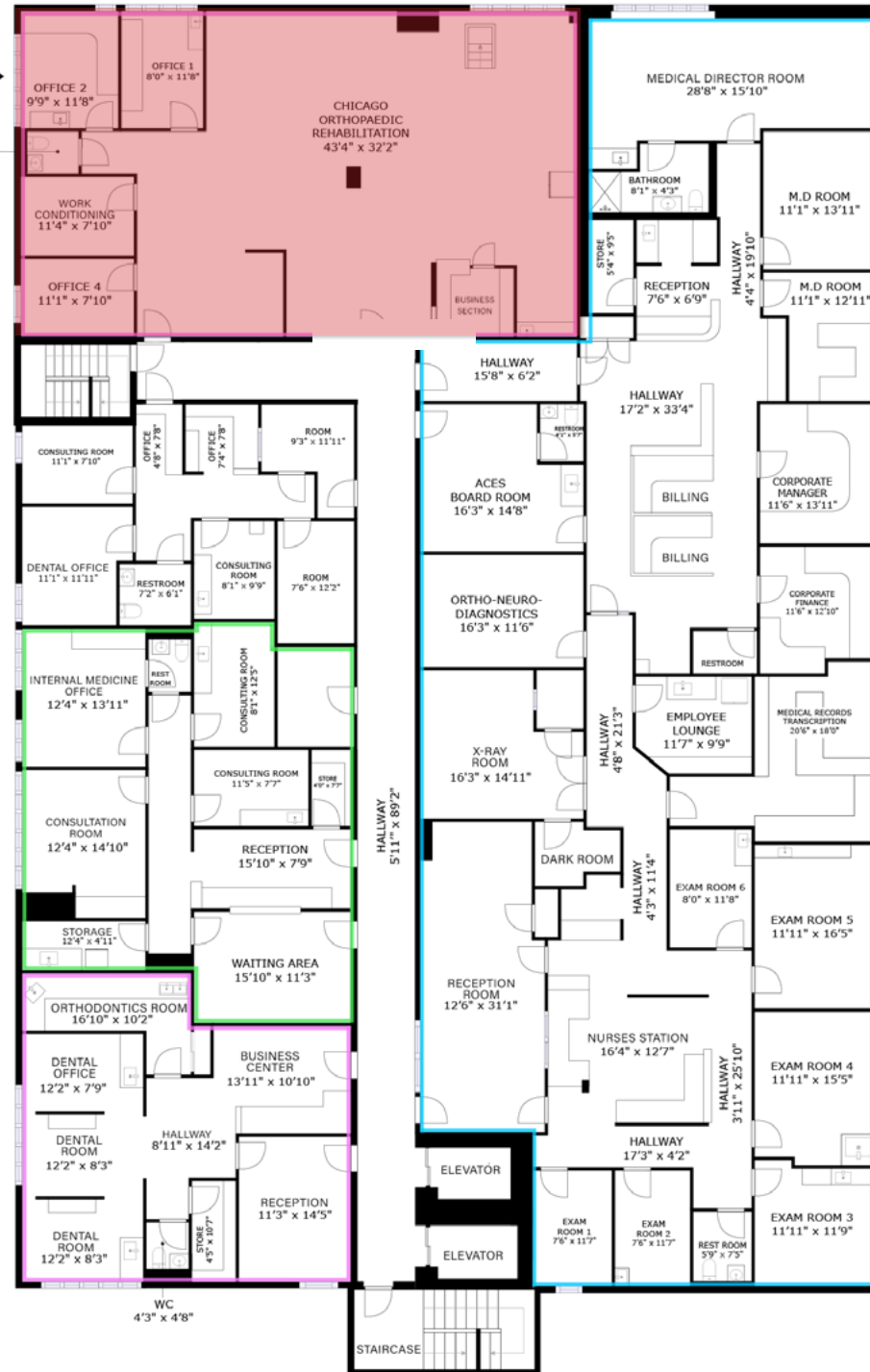
FORMER PHYSICAL THERAPY SPACE WITH OPEN AREA, 3 PRIVATE OFFICES/CONSULTATION ROOMS, 2 EXAM ROOMS WITH SINKS, AND A PRIVATE RESTROOM.

SUITE 210

REST ROOM
5'1" x 4'2"

SUITE 203

SUITE 201



SUITE 200

SIX-CORNERS
SURGICAL CENTER



CITADEL
PROPERTY ADVISORS

OLIVIA WIRTH

312-770-0119

OLIVIA@CITADEL-ADVISORS.COM

**100 SOUTH WACKER DRIVE, SUITE 950
CHICAGO, ILLINOIS 60606**

THIS BROCHURE IS FOR INFORMATIONAL PURPOSES ONLY AND DOES NOT CONSTITUTE AN OFFER, SOLICITATION, OR GUARANTEE OF ANY PROPERTY DETAILS. PROSPECTIVE BUYERS OR TENANTS SHOULD INDEPENDENTLY VERIFY ALL INFORMATION AND CONSULT LEGAL OR FINANCIAL PROFESSIONALS BEFORE MAKING DECISIONS.

Advertisement signs on a utility pole:

- ORTHOPEDIC SURGERY 773-545-6900
- REGENERATIVE MEDICINE 773-545-6900
- SECOND OPINION (773) 545-6900
- Orthopedic & Urgent Care 773-794-3100
- 4TH FLOOR
- FOR LEASE 773-544-0000
- FOR LEASE 773-544-0000

4211

SIX-CORNERS
SAME-DAY SURGERY
SURGICAL CENTER