

75 MARIETTA ST/84 WALTON ST

ESTABLISHED 1908

75 MARIETTA ST/84 WALTON ST
ATLANTA, GA 30303

SUITE 200-201
19,745 SF

Constructed in 1908, 75 Marietta/84 Walton was the original headquarters of the Georgia Railway and Power Company, the predecessor to Georgia Power. With its rich history, the building offers tenants a unique working experience in the heart of Downtown Atlanta. Located within the Fairlie-Poplar District, it is within walking distance of Centennial Olympic Park, Mercedes-Benz Stadium, State Farm Arena, and the Georgia World Congress Center. This property is easily accessible via Five Points MARTA station and offers rare access to ample parking in adjacent decks and street-level parking.

**EXCLUSIVELY
MARKETED BY:**

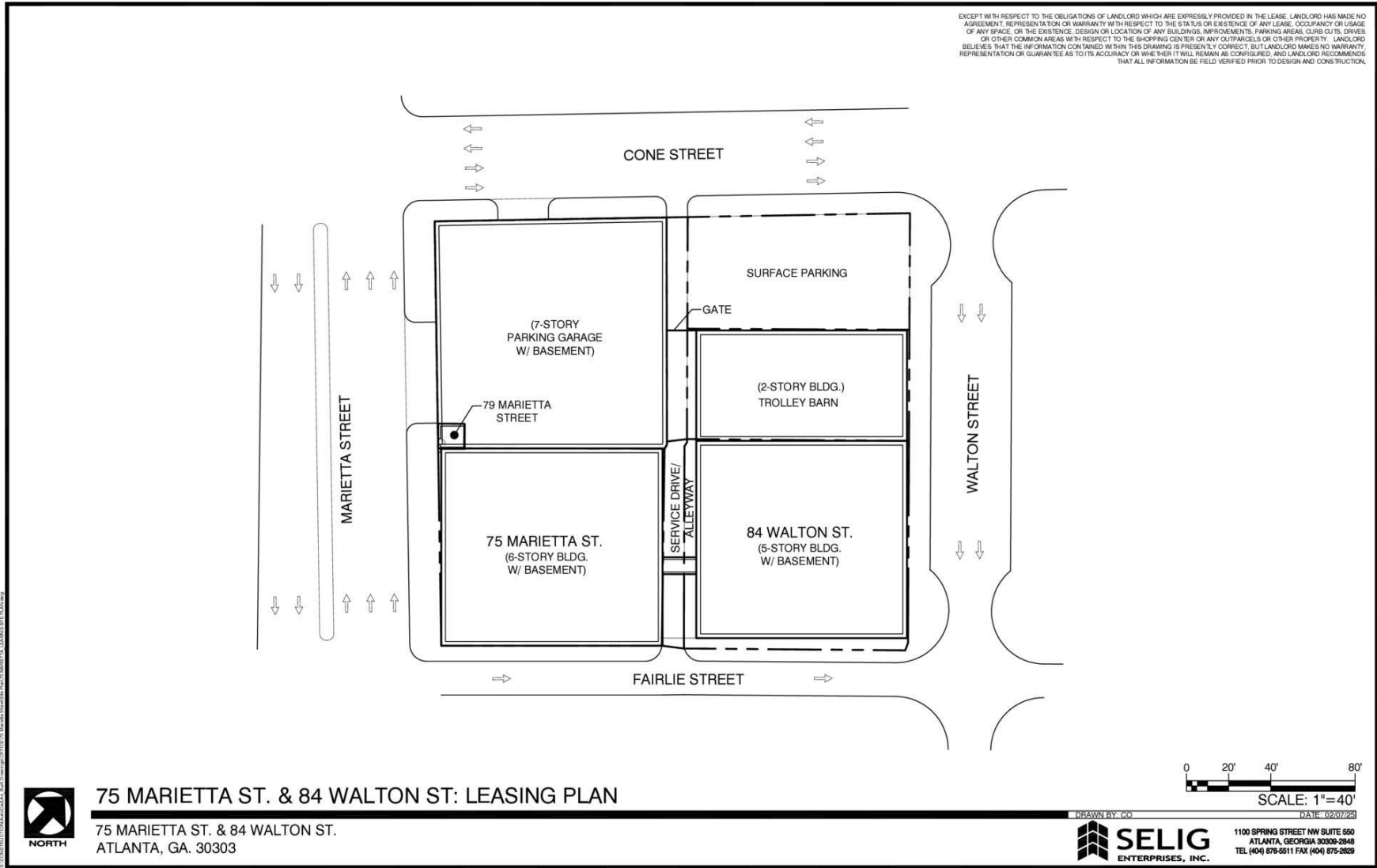


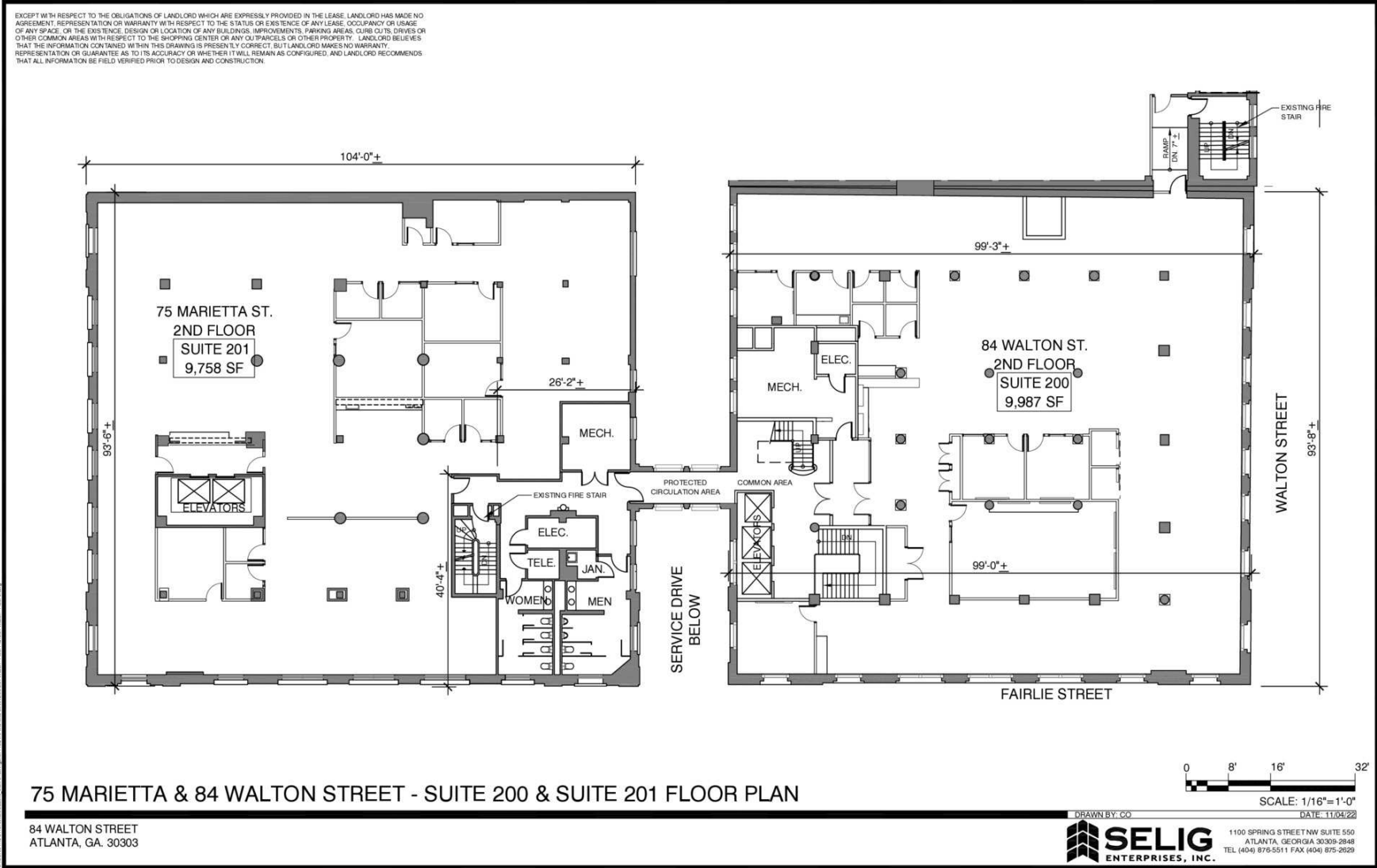
JIM SAINE

404.898.9010

jsaine@seligenterprises.com









75 MARIETTA ST/84 WALTON ST

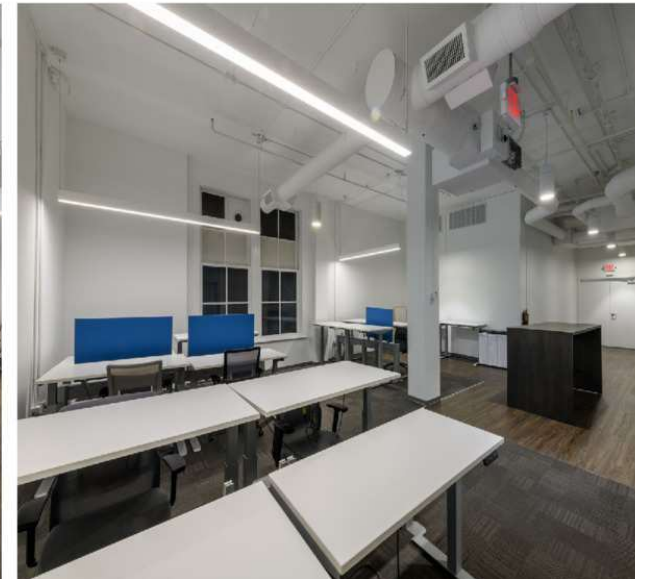
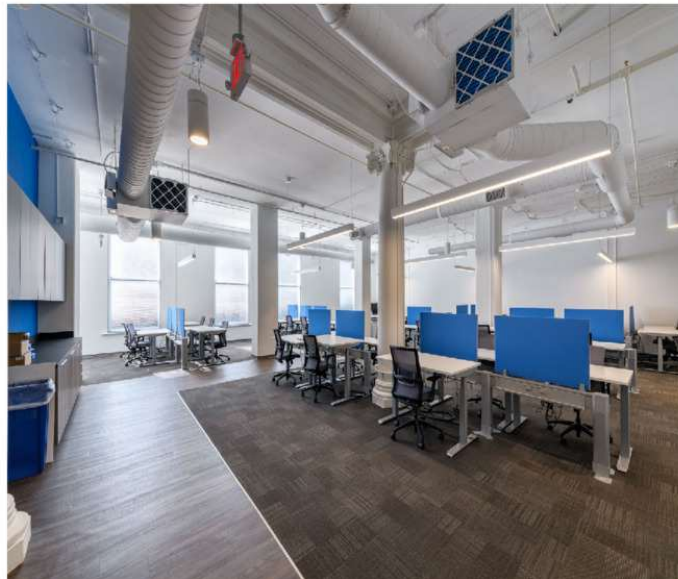
75 MARIETTA ST/84 WALTON ST, ATLANTA, GA 30303





75 MARIETTA ST/84 WALTON ST

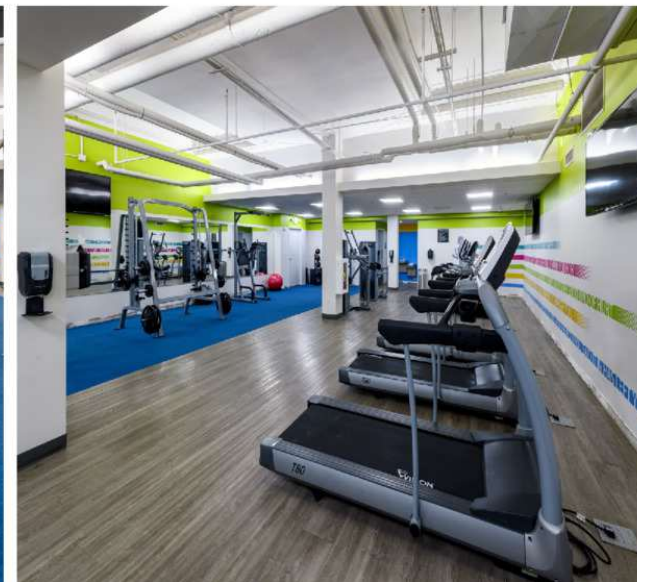
75 MARIETTA ST/84 WALTON ST, ATLANTA, GA 30303





75 MARIETTA ST/84 WALTON ST

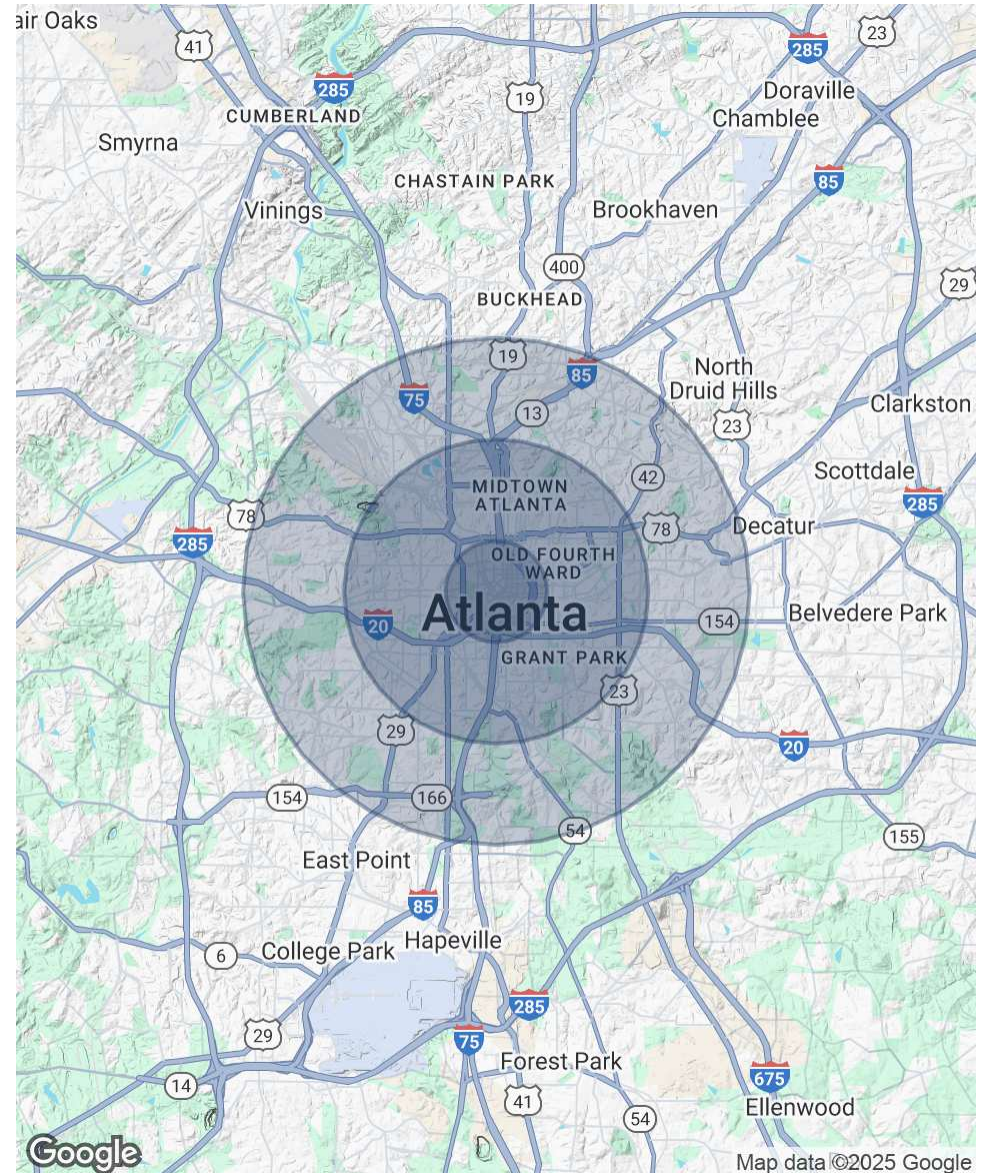
75 MARIETTA ST/84 WALTON ST, ATLANTA, GA 30303



75 MARIETTA ST/84 WALTON ST

75 MARIETTA ST/84 WALTON ST, ATLANTA, GA 30303

POPULATION	1 MILE	3 MILES	5 MILES
Total Population	25,714	196,271	389,570
Average Age	34	36	37
Average Age (Male)	34	36	37
Average Age (Female)	34	36	37
HOUSEHOLDS & INCOME	1 MILE	3 MILES	5 MILES
Total Households	10,360	94,700	181,882
# of Persons per HH	2.5	2.1	2.1
Average HH Income	\$75,516	\$118,369	\$123,677
Average House Value	\$417,417	\$574,637	\$587,311
RACE	1 MILE	3 MILES	5 MILES
% White	27.6%	44.0%	43.1%
% Black	58.2%	40.7%	42.4%
% Asian	5.5%	6.0%	4.9%
% Hawaiian	0.1%	0.0%	0.0%
% American Indian	0.3%	0.2%	0.3%
% Other	2.7%	2.1%	2.5%





75 MARIETTA ST/84 WALTON ST

75 MARIETTA ST/84 WALTON ST, ATLANTA, GA 30303

