

3838

CHARLES RAPER JONAS HWY



**±4,000 SF of Industrial
Space & ±2.0 AC of IOS
Space Available for Lease**



CONTACT BROKERS FOR MORE INFORMATION

Colin Ferguson

Vice President

704-512-0139

colin.ferguson@avisonyoung.com

Ryan Kendall

Vice President

704 612 0395

ryan.kendall@avisonyoung.com

Ian Leavitt

Associate

704 551 8354

ian.leavitt@avisonyoung.com

**AVISON
YOUNG**

INDUSTRIAL SPACE & IOS FOR LEASE

3838 Charles Raper Jonas Hwy, Stanley, NC 28164



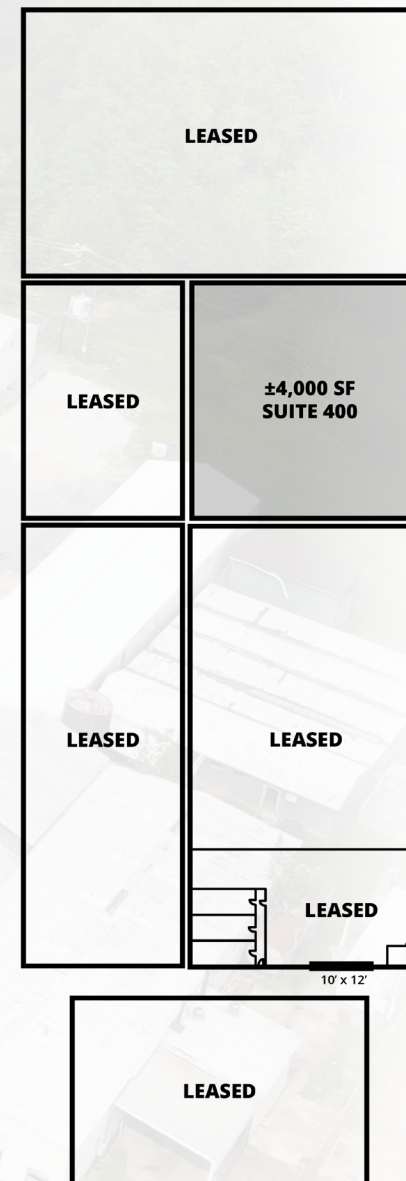
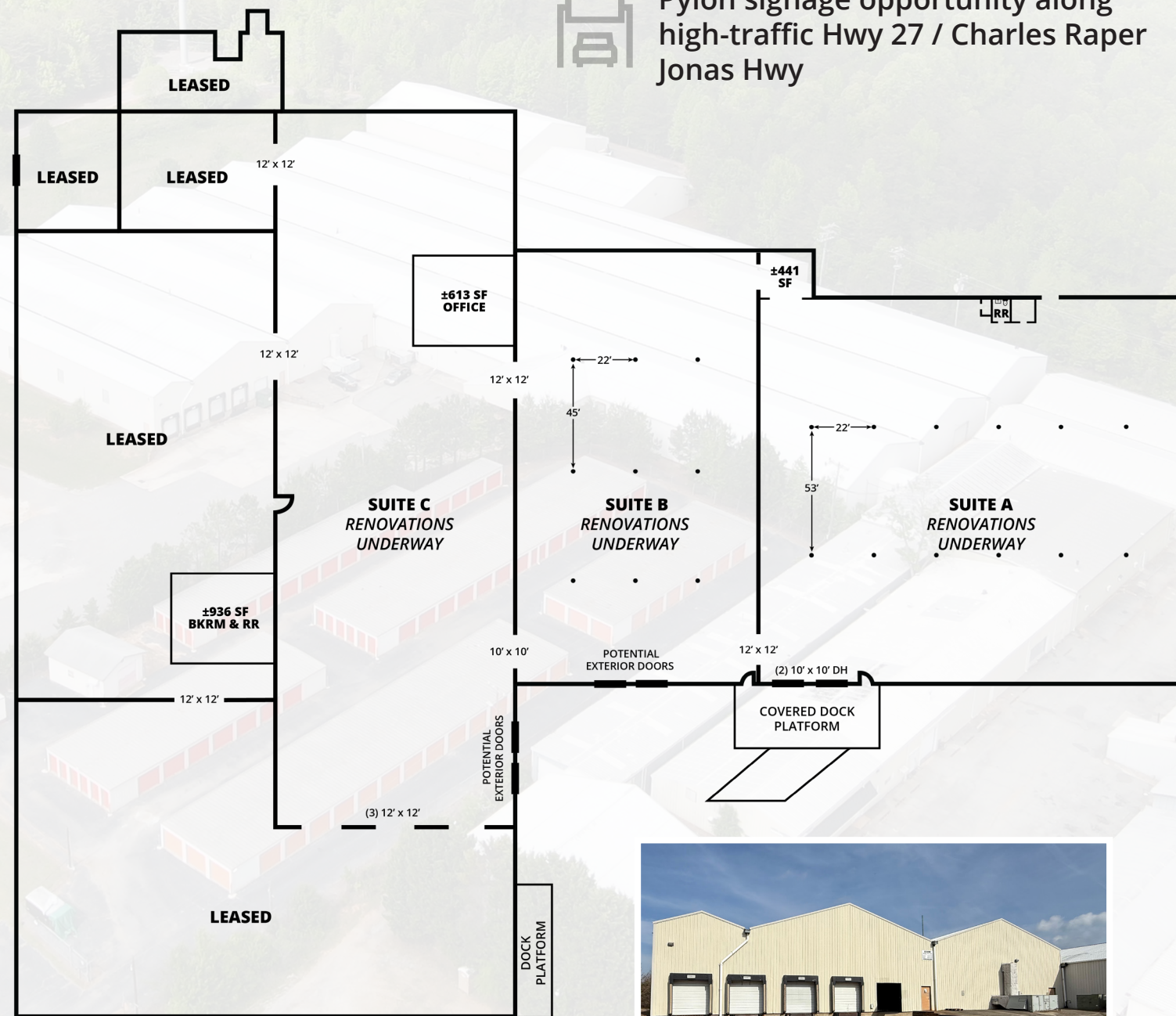
Property features



Outdoor storage opportunities available



Pylon signage opportunity along high-traffic Hwy 27 / Charles Raper Jonas Hwy

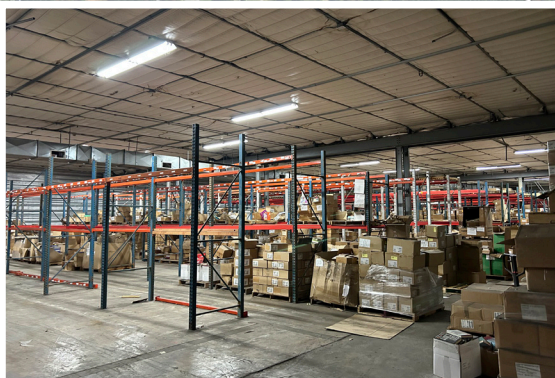
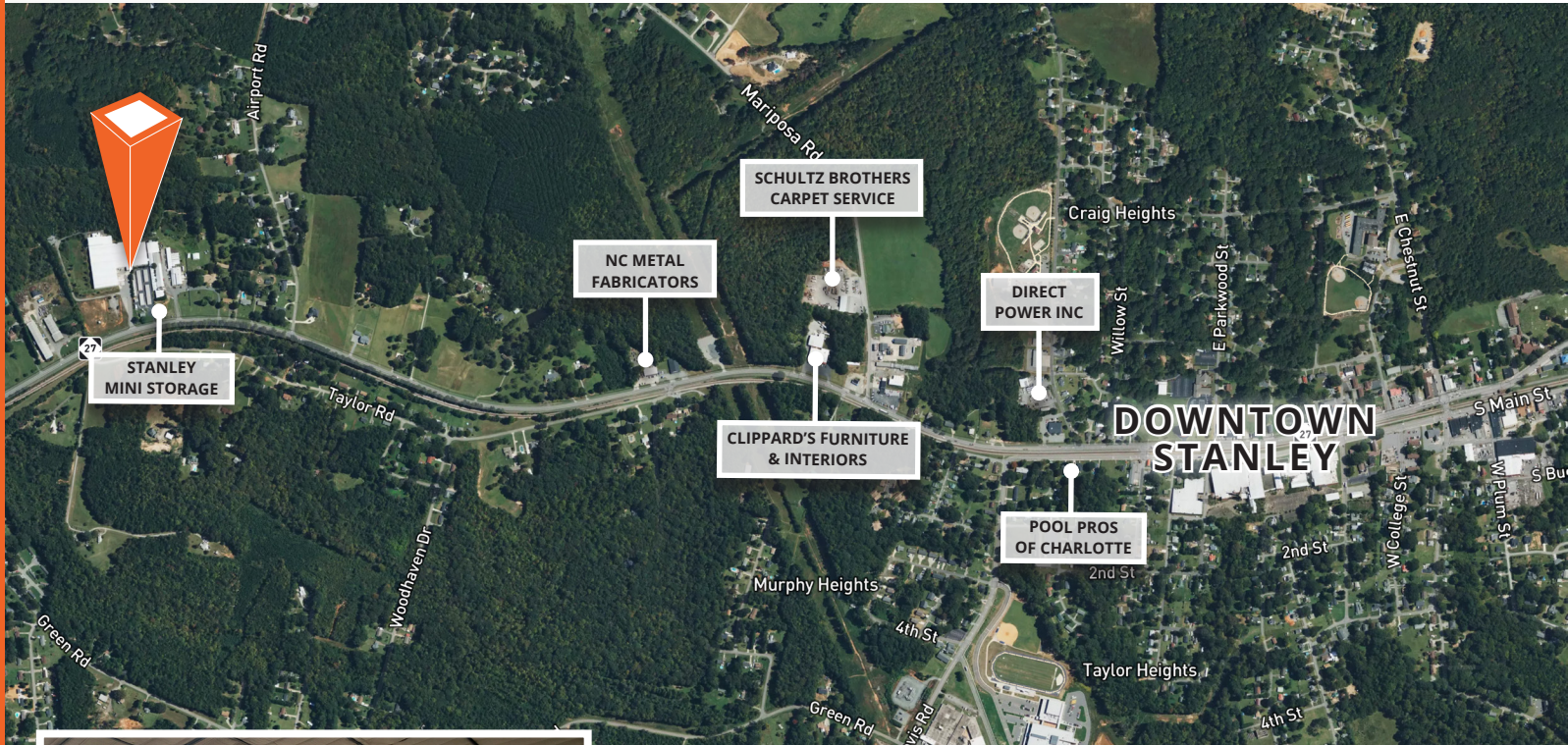


Property details

Total Available SF:	±4,000 SF
Available Suite (400):	±4,000 SF
Total IOS Lot Acreage:	±2.0 AC
Available IOS Lot (A):	±1.6 AC
Available IOS Lot (B):	±0.4 AC
Site Acreage:	±18.06 AC
Zoning:	ID (Industrial)
Clear Height:	15'
Lighting:	Newly installed LED
Power:	450 amps
HVAC:	Partially conditioned
Space Upgrades:	Available per mutually agreeable terms

LOCATION OVERVIEW

3838 Charles Raper Jonas Hwy, Stanley, NC 28164



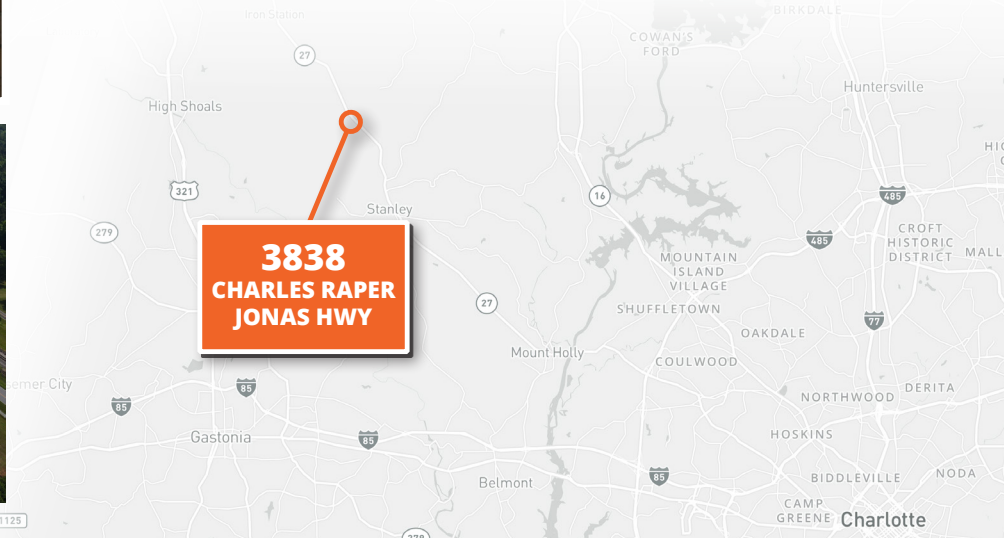
DOWNTOWN STANLEY
2.4 miles



HIGHWAY 321
7.6 miles



CHARLOTTE DOUGLAS
INTERNATIONAL AIRPORT
17.8 miles



Colin Ferguson
Vice President
704-512-0139
colin.ferguson@avisonyoung.com

Ryan Kendall
Vice President
704 612 0395
ryan.kendall@avisonyoung.com

Ian Leavitt
Associate
704 551 8354
ian.leavitt@avisonyoung.com

**AVISON
YOUNG**