

Contracted Warehouse Available

📍 109 Roy Road SE | Pacific, Washington



Up to ±25,300 SF

POL 69K SF SPACE

PROPERTY FEATURES

- 🚪 4 Dock high doors
- 📏 30' Clear height
- 🔥 ESFR
- 💡 LED Lighting
- 🏗️ 55x50 typical column spacing
- 🚗 Great access to SR 167

VALUE ADD SERVICES

- » Pallet in, pallet out
- » Pop breakdown
- » Logistics
- » Pick and pack
- » Load / unload
- » Labor

For more information, please contact:

Wes Hunnicutt

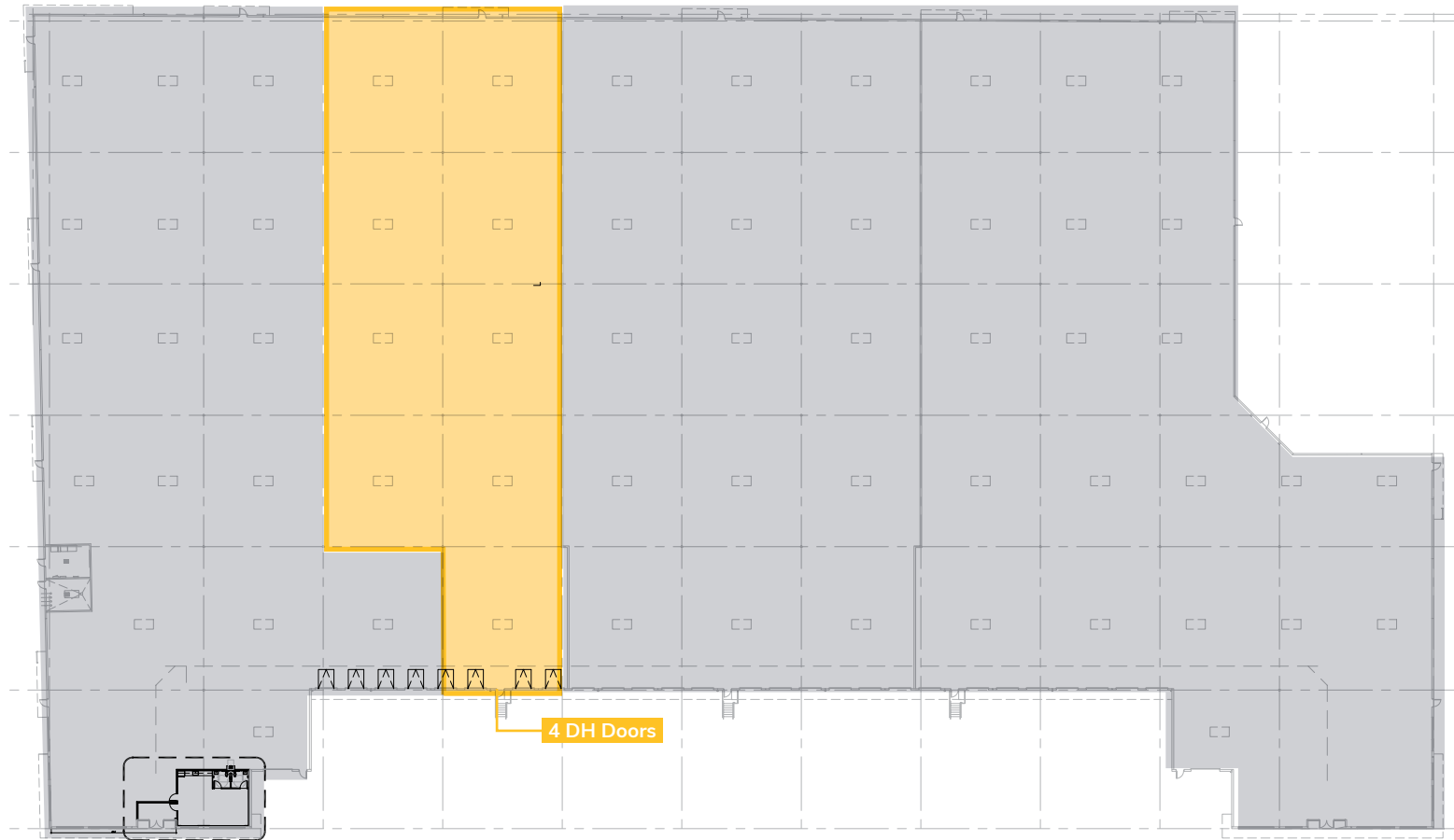
wes.hunnicutt@streamrealty.com
949.732.3767
CA Lic. 01346131

Contracted Warehouse Available



📍 109 Roy Road SE | Pacific, Washington

±25,300 RSF



Contracted Warehouse Available



📍 109 Roy Road SE | Pacific, Washington



PROPERTY INFO

Size	Up to 25,300 RSF
Term	Flexible
Rate	Call broker for rate
Available	April 2024



For more information,
please contact:

Wes Hunnicutt

wes.hunnicutt@streamrealty.com

949.732.3767

CA Lic. 01346131

Copyright © 2024 Stream Realty Partners. All rights reserved. The information contained herein was obtained from sources believed reliable; however, Stream Realty Partners, L.P. make no guarantees, warranties or representations as to the completeness or accuracy thereof. The presentation of this property is submitted subject to errors, change of price, or conditions, prior sale or lease, or withdrawal without notice.