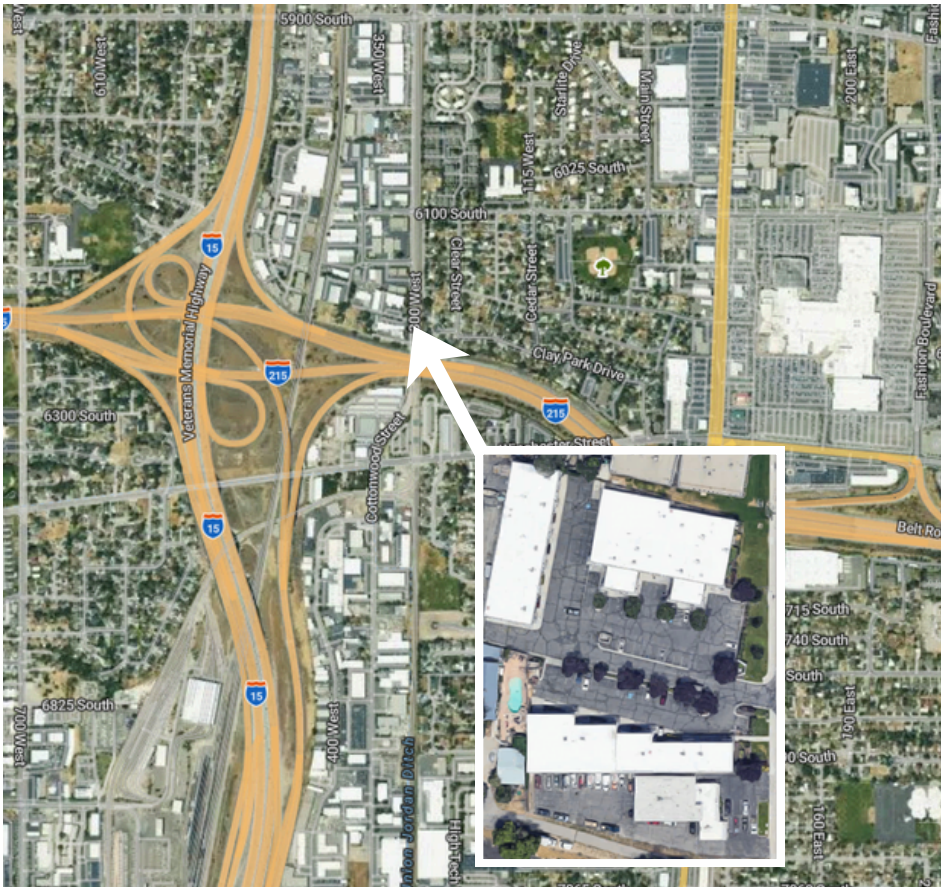


QUAIL HOLLOW INDUSTRIAL PARK



Quail Hollow Industrial Park

318 WEST QUAIL TRAX PLACE
MURRAY, UT 84107

For Lease

Property Highlights

- 2,392 SF available
- Fire sprinklered
- 208V power
- Easy access to I-215 and I-15
- Close proximity to UTA TRAX
- New RTU installed 2025
- Warehouse Heater

For information, please contact:

Chris Mabey
Principal Broker
t 801-313-0700
cmabey@capstonepm.com

Kent Gibson
Associate Broker
t 801-313-0700
kgibson@capstonepm.com

4422 S Century Drive
Murray UT 84123

For information, please contact:

Chris Mabey
Principal Broker
t 801-313-0700
cmabey@capstonepm.com

Kent Gibson
Associate Broker
t 801-313-0700
kgibson@capstonepm.com

4422 S Century Drive
Murray UT 84123



The information contained herein has been obtained from sources deemed reliable but has not been verified and no guarantee, warranty or representation, either express or implied, is made with respect to such information. Terms of sale or lease and availability are subject to change or withdrawal without notice.



The information contained herein has been obtained from sources deemed reliable but has not been verified and no guarantee, warranty or representation, either express or implied, is made with respect to such information. Terms of sale or lease and availability are subject to change or withdrawal without notice.

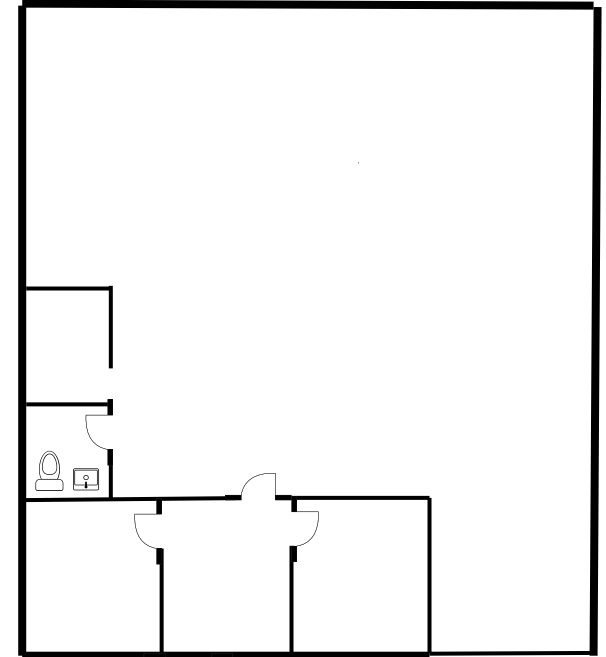
SITE PLAN

Bldg 318 – 2,392 SF

- 3 Offices
- Clear Height: 14'
- One (1) ground level door (9'x12')



FLOOR PLANS



GL
12' x 9'