



40 20 0 40

SCALE: 1" = 40' (24x36)  
SCALE: 1" = 80' (11x17)

LEGEND:

LAND AREA - 9.48 AC

STORM WATER POND = 1.41 AC - 14.82%



3 STORY WALKUP RESIDENTIAL ( 8 UNITS PER FLOOR ) ( 96 UNITS )



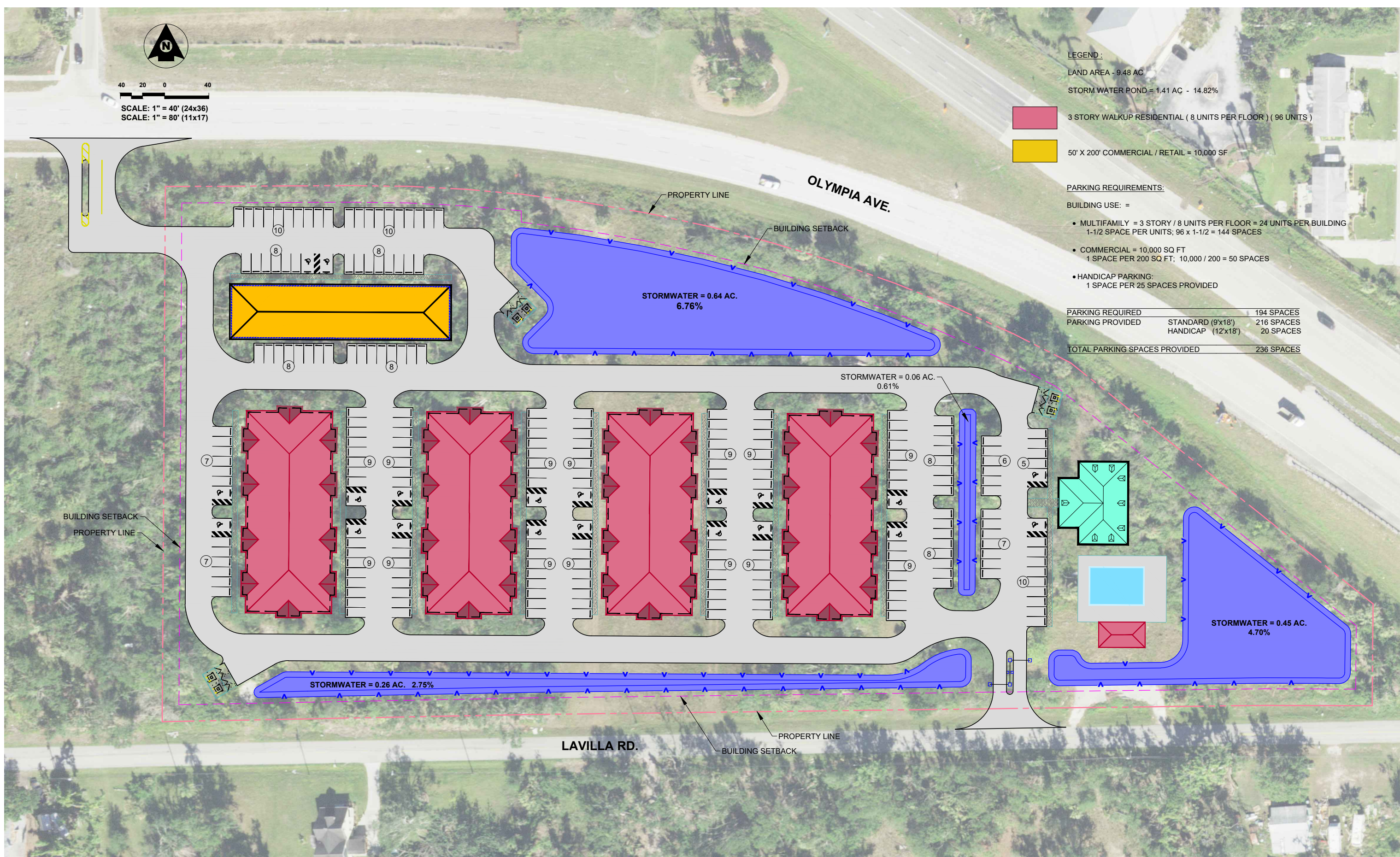
50' X 200' COMMERCIAL / RETAIL = 10,000 SF

PARKING REQUIREMENTS:

BUILDING USE: =

- MULTIFAMILY = 3 STORY / 8 UNITS PER FLOOR = 24 UNITS PER BUILDING  
1-1/2 SPACE PER UNITS; 96 x 1-1/2 = 144 SPACES
- COMMERCIAL = 10,000 SQ FT  
1 SPACE PER 200 SQ FT; 10,000 / 200 = 50 SPACES
- HANDICAP PARKING:  
1 SPACE PER 25 SPACES PROVIDED

PARKING REQUIRED		194 SPACES
PARKING PROVIDED	STANDARD (9'x18')	216 SPACES
	HANDICAP (12'x18')	20 SPACES
TOTAL PARKING SPACES PROVIDED		236 SPACES



5/20/2024 10:50:22 AM - P:24-0000 - 2024 CONCEPT PLANS:24-0000.09 - 25231 OLYMPIA - TOM FLOOD:DESIGN:CONCEPT:CONCEPT\_2.DWG - RONALD GARABRANDT



25450 Airport Road, Suite B  
Punta Gorda, Florida 33950  
Tel. (941) 637-9655 | Fax (941) 637-1149  
www.sedfi.com  
Certificate of Authorization No. 26551

REV.	DATE	BY	CK'D	DESCRIPTION

Project No.:	24-0000.09
Project Manager:	G W B
Project Engineer:	G W B
Project Designer:	-
Checked By:	-
Approved By:	G W B

PUNTA GORDA

# 25231 OLYMPIA AVE. CONCEPT - 2

SECTION 05, TOWNSHIP 41 SOUTH, RANGE 23 EAST

FLORIDA

**PRELIMINARY PLAN ONLY  
NOT FOR CONSTRUCTION**  
May 20, 2024

DATE:	MAY, 2024	SURVEY DATUM	NAVD 88
PROJECT No.:	24-0000.09		
SHEET:	1		

Bar Measures 1 Inch