



40 NORTH FORTY

BLDG 1

For more information,
please contact:

JOHN CRIDDLE
EXECUTIVE VICE PRESIDENT
+1 561 283 5176
john.criddle@cbre.com

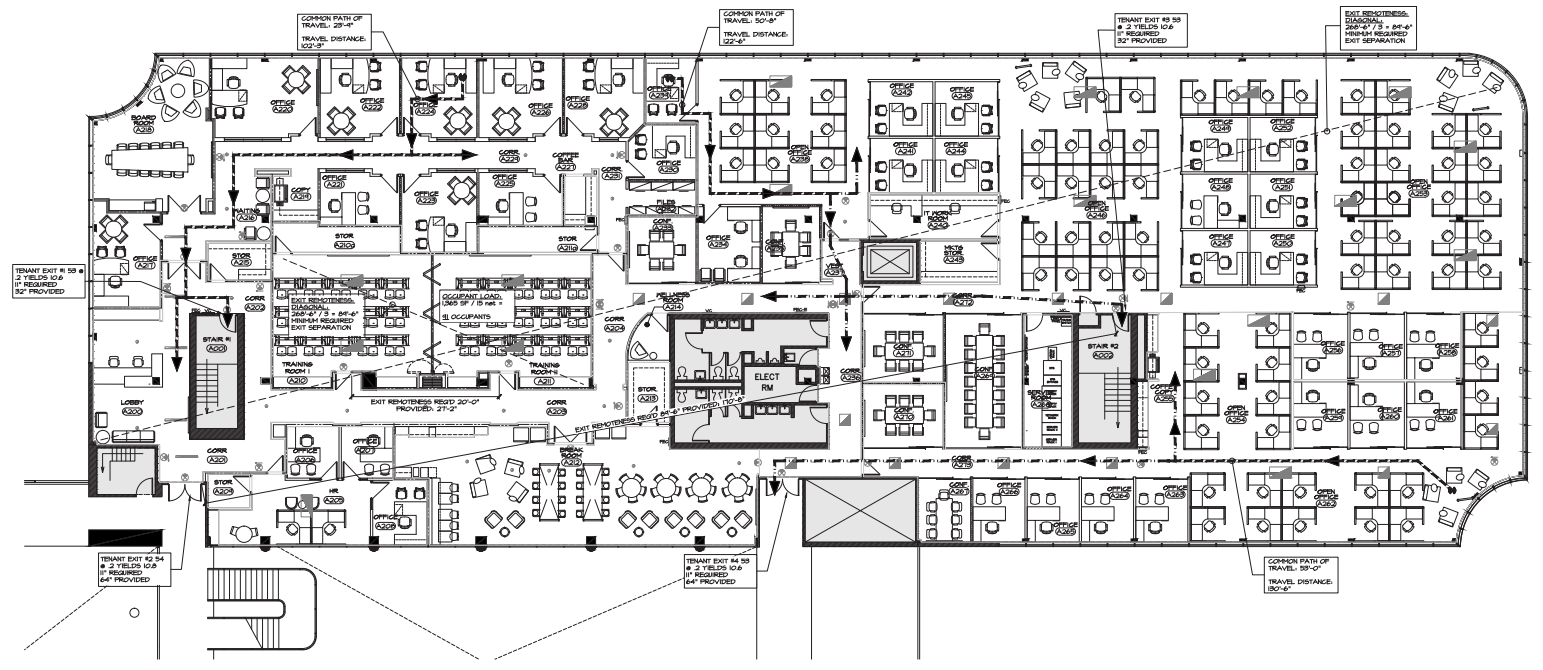
JOE FREITAS
SENIOR VICE PRESIDENT
+1 561 512 8844
joe.freitas@cbre.com

MAX PAWK
VICE PRESIDENT
+1 561 393 1670
max.pawk@cbre.com

NICHOLAS MULLIGAN
ASSOCIATE
+1 561 393 1680
nicholas.mulligan@cbre.com

BLDG 1: 5201 Congress Ave
BLDG 2: 901 Yamato Road

Suite 220
24,653 SF



©2024 CBRE, Inc. All rights reserved. This information has been obtained from sources believed reliable, but has not been verified for accuracy or completeness. Any projections, opinions, or estimates are subject to uncertainty. The information may not represent the current or future performance of the property. You and your advisors should conduct a careful, independent investigation of the property and verify all information. Any reliance on this information is solely at your own risk. CBRE and the CBRE logo are service marks of CBRE, Inc. and/or its affiliated or related companies in the United States and other countries. All other marks displayed on this document are the property of their respective owners. Photos herein are the property of their respective owners and use of these images without the express written consent of the owner is prohibited.

