



**4,000 - 8,713 SF OFFICE SPACE AVAILABLE**

110 Londonderry Court - Suite 135  
Woodstock, GA 30188

OWNED BY:



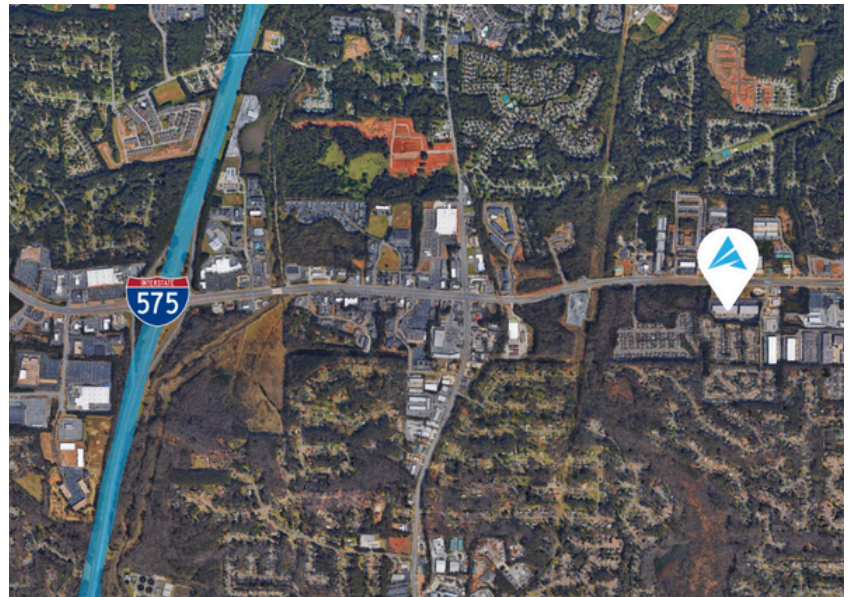
**FOR LEASE**



**AMPLE PARKING AVAILABLE**

### PROPERTY INFORMATION

- Total Size:** 4,000 - 8,713 SF
- Office:** 4,000 - 8,713 SF
- Clear Height:** 9'
- Available:** Immediately
- Location:** +/- 2.0 miles from I-575  
+/- 9.5 miles from I-75  
+/- 20 miles from I-285  
+/- 39 miles from Atlanta Airport



For more information, please contact:

#### ANDY HEAD

Office: (404) 595-1466  
Cell: (404) 713-4601  
ahead@apexindustrialre.com

#### TREY WEGHORST

Office: (770) 264-9420  
Cell: (404) 276-9314  
tweghorst@apexindustrialre.com



Although the information contained therein was provided from sources believed to be reliable, Apex Industrial makes no representation, expressed or implied, as to its accuracy and said information is subject to errors, omissions or changes.



**4,000 - 8,713 SF OFFICE SPACE AVAILABLE**

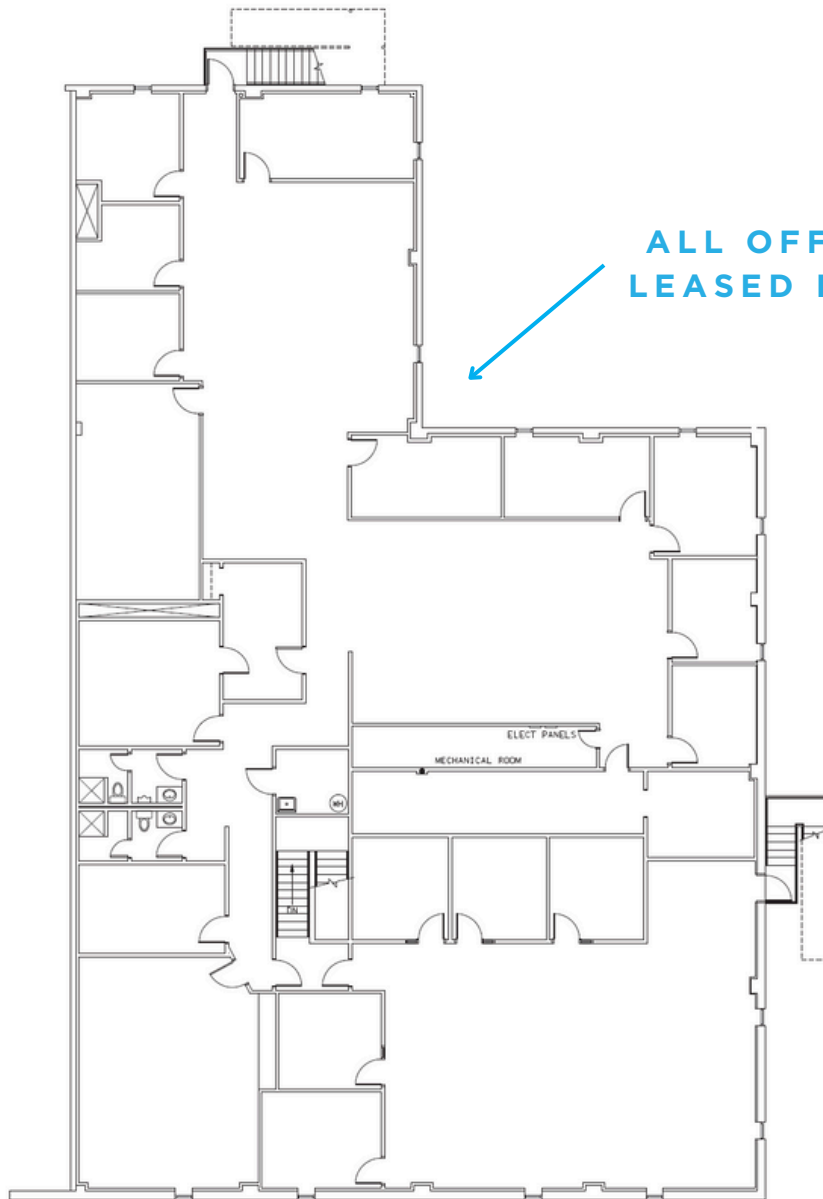
110 Londonderry Court - Suite 135

Woodstock, GA 30188

OWNED BY:



# FLOOR PLAN



**ALL OFFICES CAN BE  
LEASED INDIVIDUALLY**

For more information, please contact:

**ANDY HEAD**

Office: (404) 595-1466  
Cell: (404) 713-4601  
ahead@apexindustrialre.com

**TREY WEGHORST**

Office: (770) 264-9420  
Cell: (404) 276-9314  
tweghorst@apexindustrialre.com



Although the information contained therein was provided from sources believed to be reliable, Apex Industrial makes no representation, expressed or implied, as to its accuracy and said information is subject to errors, omissions or changes.