



COMMERCIAL REALTY SOLUTIONS

**For Sale**  
**Commercial/Retail**  
**Building**



# HOWARD LAKE

## Commercial/Retail Property

**Sales Price: \$500,000.00**

**Building Size: 9,200/sf Lot Size: 0.51 Acres**

603 8th Avenue, Howard Lake, MN 55349

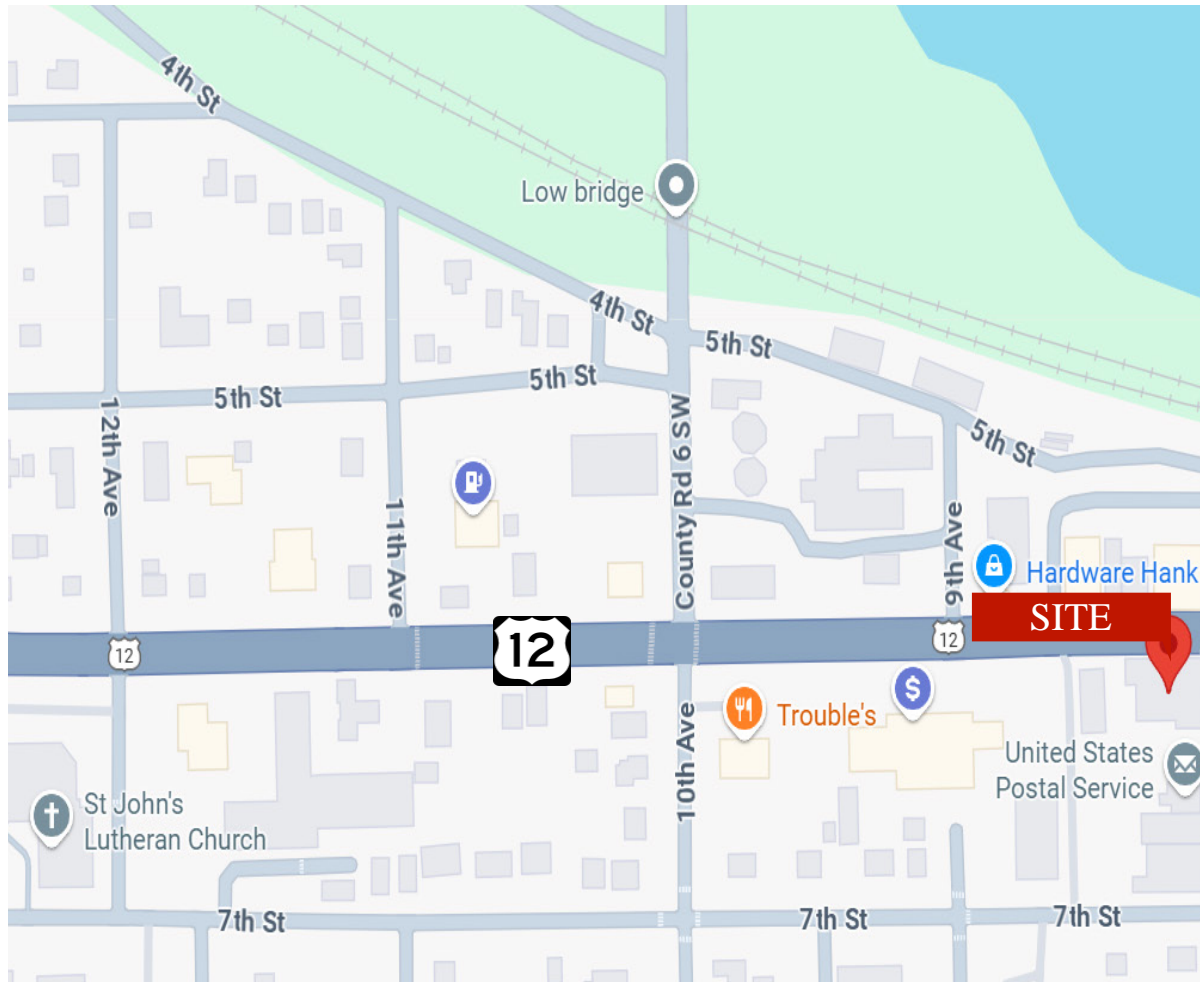
Joseph Elam, Broker  
320.282.8410  
JElam@Crs-Mn.com

Wayne Elam, Broker  
763.229.4982  
WElam@Crs-Mn.com

- ◆ High Visibility
- ◆ Easy Access

◆ Great Corner Location on Highway 12

**TRAFFIC COUNTS - 2025**  
 \* Highway 12 - 11,500 VPD



**Businesses in the Area:**

Maria's Mexican Restaurant, American Legion, City Hall, Post Office, Citizens Bank, Hardware Hank and more.

This information has been secured from sources we believe to be reliable, but we make no representations or warranties explained or implied as to the accuracy of the information. Buyer must verify the information and bears all risk for any inaccuracies.

# PROPERTY OVERVIEW

603 8th Ave, Howard Lake, MN

Sales Price

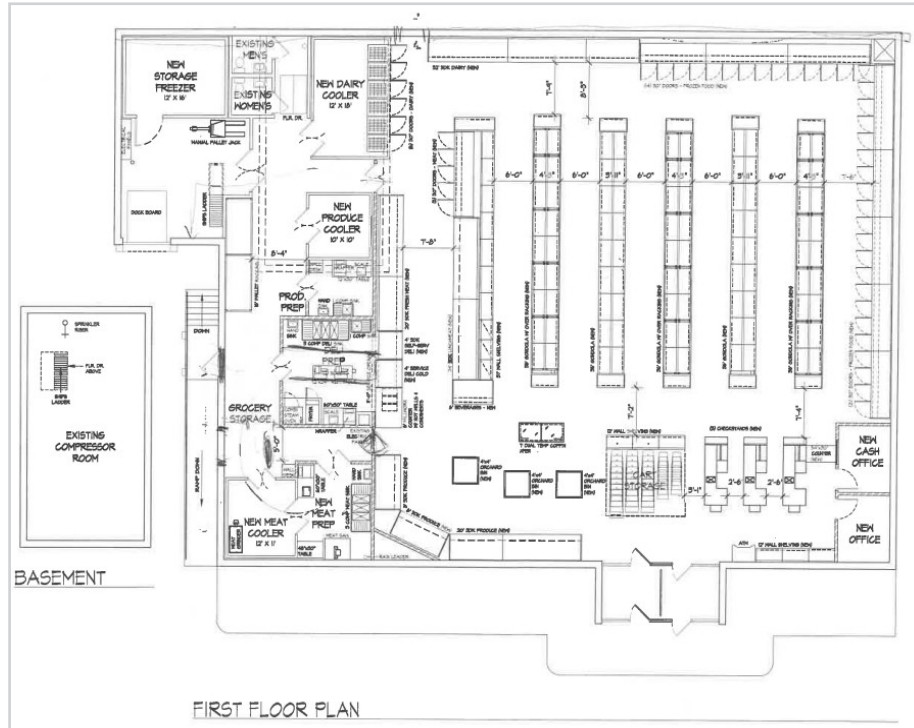
\$500,000.00

Building Size	9,200/sf
Lot Size	0.51 Acres
Wright County	PID 109-010-017010
2026 Taxes	\$TBD
Zoned	B-2 Downtown Area Business
Year Built	1974
Tenant	Single-Tenant
Other	FF&E Available City Incentives Available

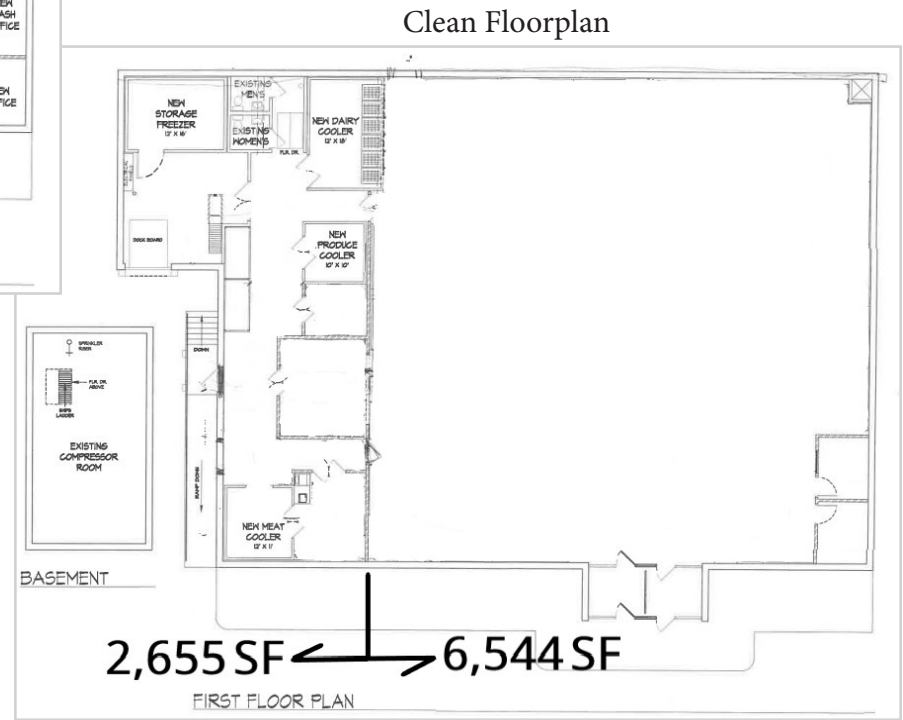


This information has been secured from sources we believe to be reliable, but we make no representations or warranties explained or implied as to the accuracy of the information. Buyer must verify the information and bears all risk for any inaccuracies.

# FLOOR PLANS



As Built - Existing Grocery Store



This information has been secured from sources we believe to be reliable, but we make no representations or warranties explained or implied as to the accuracy of the information. Buyer must verify the information and bears all risk for any inaccuracies.

# INTERIOR



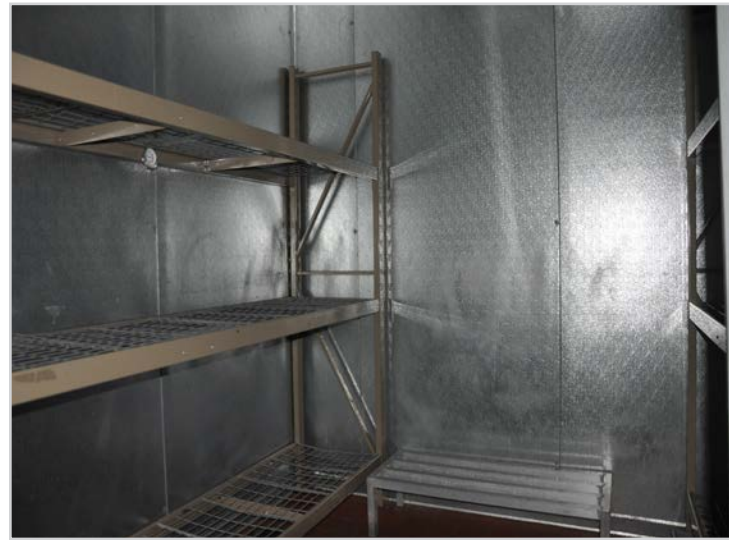
This information has been secured from sources we believe to be reliable, but we make no representations or warranties explained or implied as to the accuracy of the information. Buyer must verify the information and bears all risk for any inaccuracies.

# INTERIOR



This information has been secured from sources we believe to be reliable, but we make no representations or warranties explained or implied as to the accuracy of the information. Buyer must verify the information and bears all risk for any inaccuracies.

# INTERIOR



This information has been secured from sources we believe to be reliable, but we make no representations or warranties explained or implied as to the accuracy of the information. Buyer must verify the information and bears all risk for any inaccuracies.

# INTERIOR



This information has been secured from sources we believe to be reliable, but we make no representations or warranties explained or implied as to the accuracy of the information. Buyer must verify the information and bears all risk for any inaccuracies.

# EXTERIOR



## PROPERTY INFORMATION

- \* Open Floor Plan
- \* Developed Lot
- \* High Traffic Corner Location
- \* Basement with Mechanicals
- \* Fully Renovated in 2010 including Roof, HVAC, Deli Equipment, POS System, Coolers/Freezers, and LED Lighting
- \* Adjacent City Owned Parking

## BUILDING INFORMATION

- \* One (1) Overhead Dock High Drive-in Door 8' x 8'
- \* Clear Spanned
- \* 11' Clear Height to Ceiling Grid
- \* 13'6" to Joist
- \* Dairy Cooler: 12' x 18'
- \* Storage Freezer: 12' x 16'
- \* Produce Cooler: 10' x 10'
- \* Meat Cooler: 12' x 11'