



PREMIER HEBER MAIN STREET OFFICE ASSET | AVAILABLE FOR SALE

98 S MAIN STREET | HEBER CITY, UT 84032

OFFERED AT \$1,500,000

A rare opportunity to own one of downtown Heber City's most distinctive office properties. Positioned along Historic Main Street, this beautifully restored asset blends timeless architectural character with modern functionality, offering an exceptional opportunity for an owner/user or investor seeking presence, identity, and long term value.

**BERKSHIRE
HATHAWAY** | UTAH
HOMESERVICES | PROPERTIES

COMMERCIAL DIVISION

PROPERTY PHOTOS

FOR SALE 98 S MAIN STREET | HEBER CITY, UT 84032



PROPERTY PHOTOS

FOR SALE 98 S MAIN STREET | HEBER CITY, UT 84032



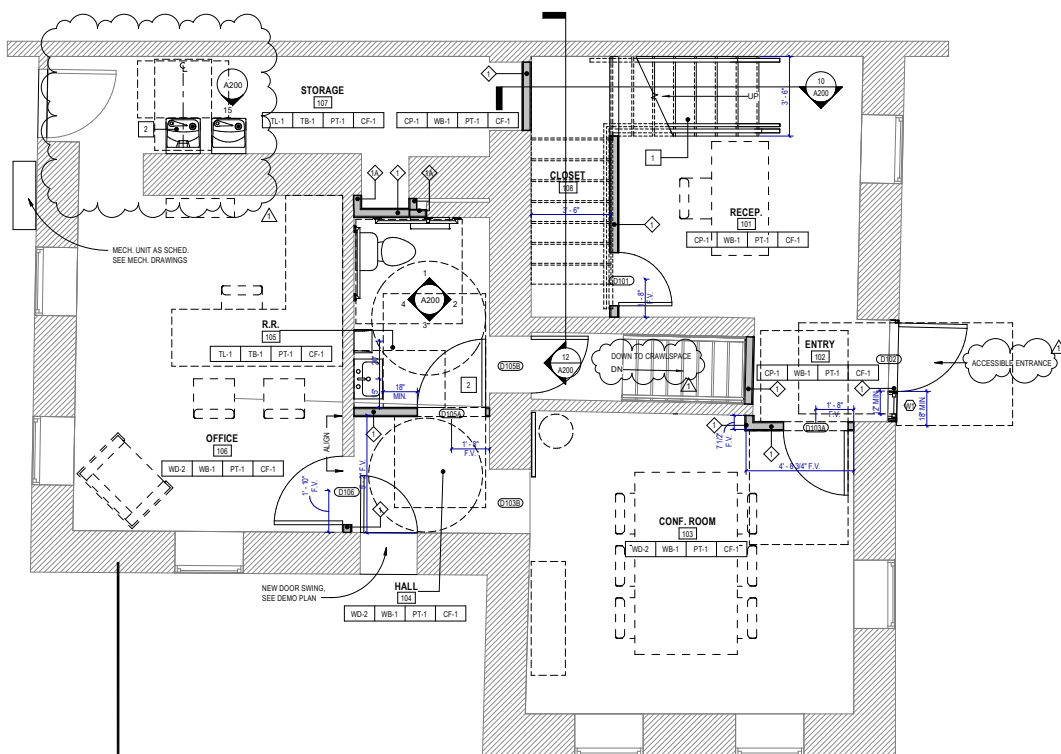
PROPERTY PHOTOS

FOR SALE 98 S MAIN STREET | HEBER CITY, UT 84032

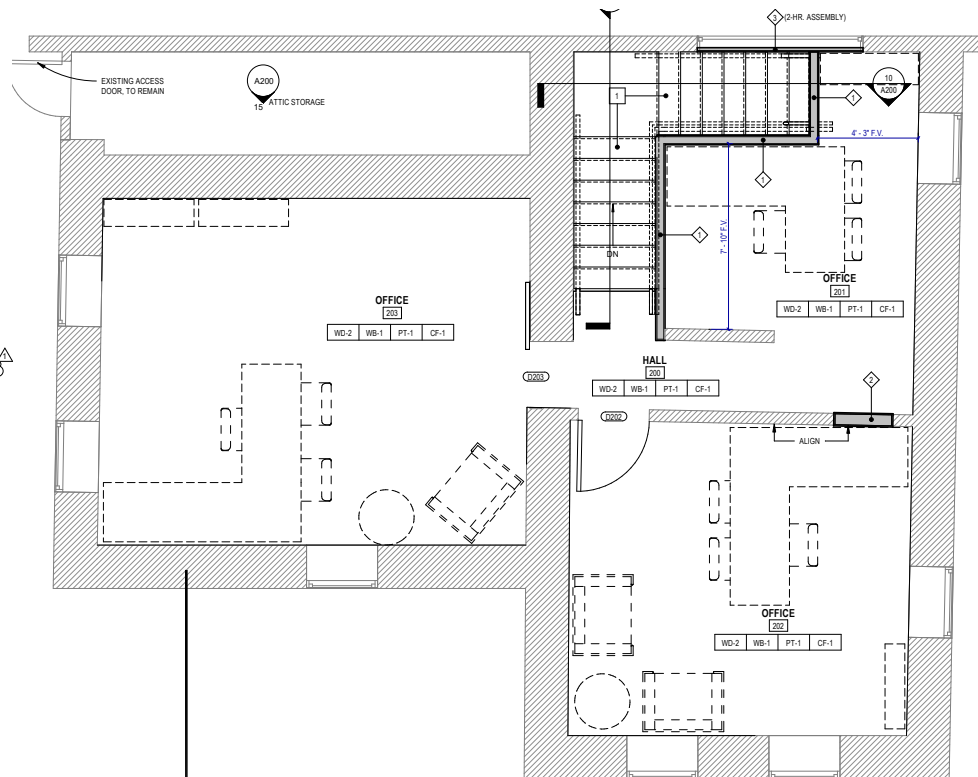


FLOOR PLAN

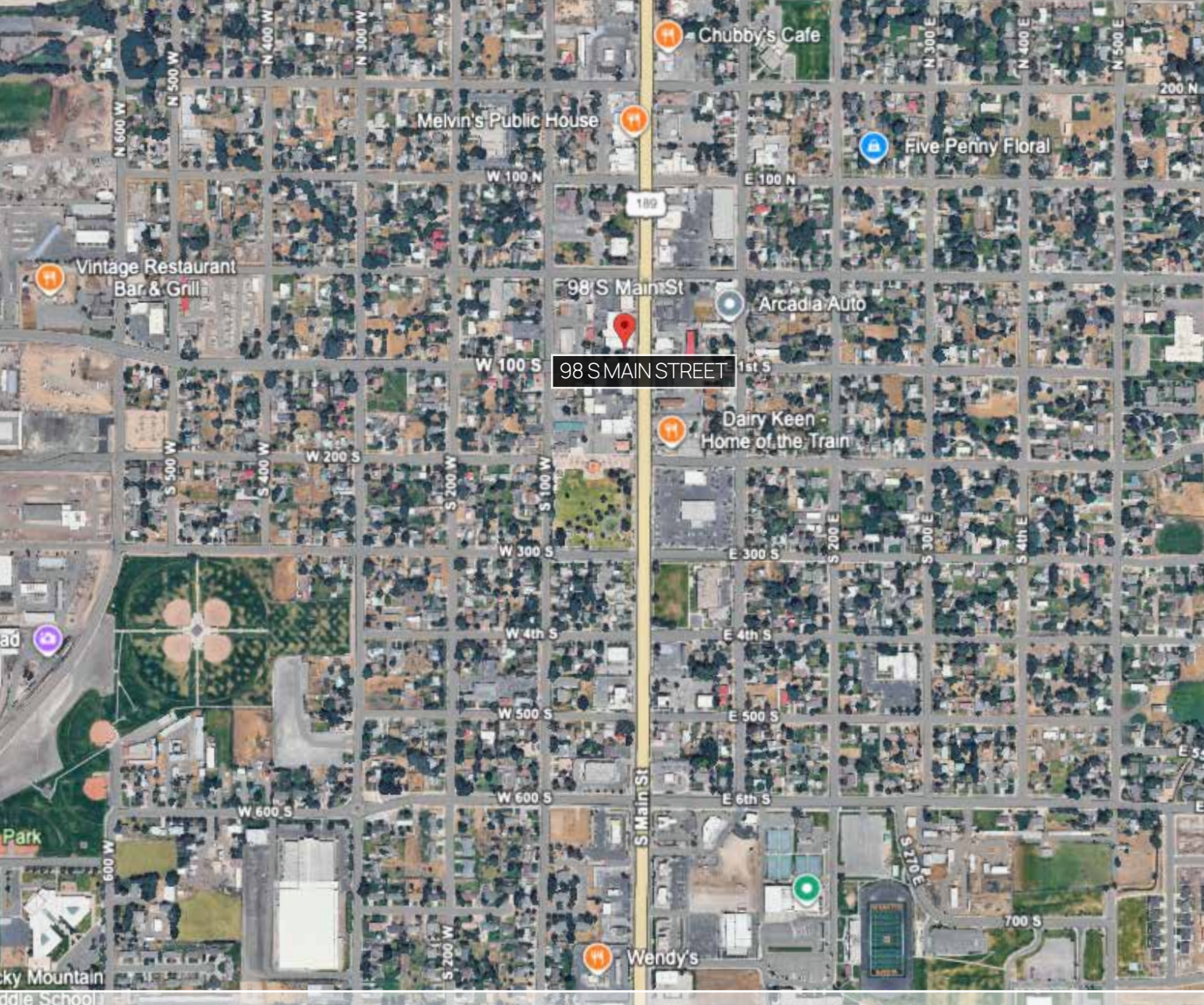
FOR SALE 98 S MAIN STREET | HEBER CITY, UT 84032



LEVEL 1



LEVEL 2



FOR SALE
98 S MAIN STREET
HEBER CITY, UT 84032

- Rare owner/user or investment opportunity in the heart of downtown Heber City
- Approx. ±2,000 SF historic office building (county records indicate approx. ±2,150 SF)
- Originally built in 1888, featuring authentic architectural character and irreplaceable Main Street presence
- Thoughtfully repositioned into a high-end office environment
- Prominent Main Street frontage offering excellent visibility, signage, and brand identity
- Flexible floor plan ideal for owner/users, professional office, boutique creative office, or investors
- Walkable to downtown dining, retail, municipal services, and community amenities
- Opportunity to own one of downtown Heber's most distinctive commercial assets
- Strong potential for long-term appreciation in one of Utah's fastest-growing mountain communities

Contact us today to schedule a tour or request additional information!

JILL SNYDER
(435) 671-0793
jill@utahcre.com

TODD McLACHLAN
(801) 520-9005
todd@utahcre.com

CHELSEA WALL
(435) 671-3541
chelsea@utahcre.com

**BERKSHIRE
HATHAWAY** | UTAH
HOMESERVICES | PROPERTIES

COMMERCIAL DIVISION