

FOR LEASE

# 6100 THORTON AVE - SUITE 200

6100 THORTON AVE - SUITE 200 DES MOINES, IA 50321



## PROPERTY DESCRIPTION

Office for sublease through 6/30/2027. Located at the corner of 63rd St and Thorton Ave in Des Moines, IA.

## PROPERTY HIGHLIGHTS

- -Turnkey office space
- -15 Private offices
- -4 conference rooms
- -Office furniture in-place and negotiable

## OFFERING SUMMARY

<b>Lease Rate:</b>	\$7.25 SF/yr (NNN)
<b>Available SF:</b>	13,152 SF
<b>Building Size:</b>	49,044 SF

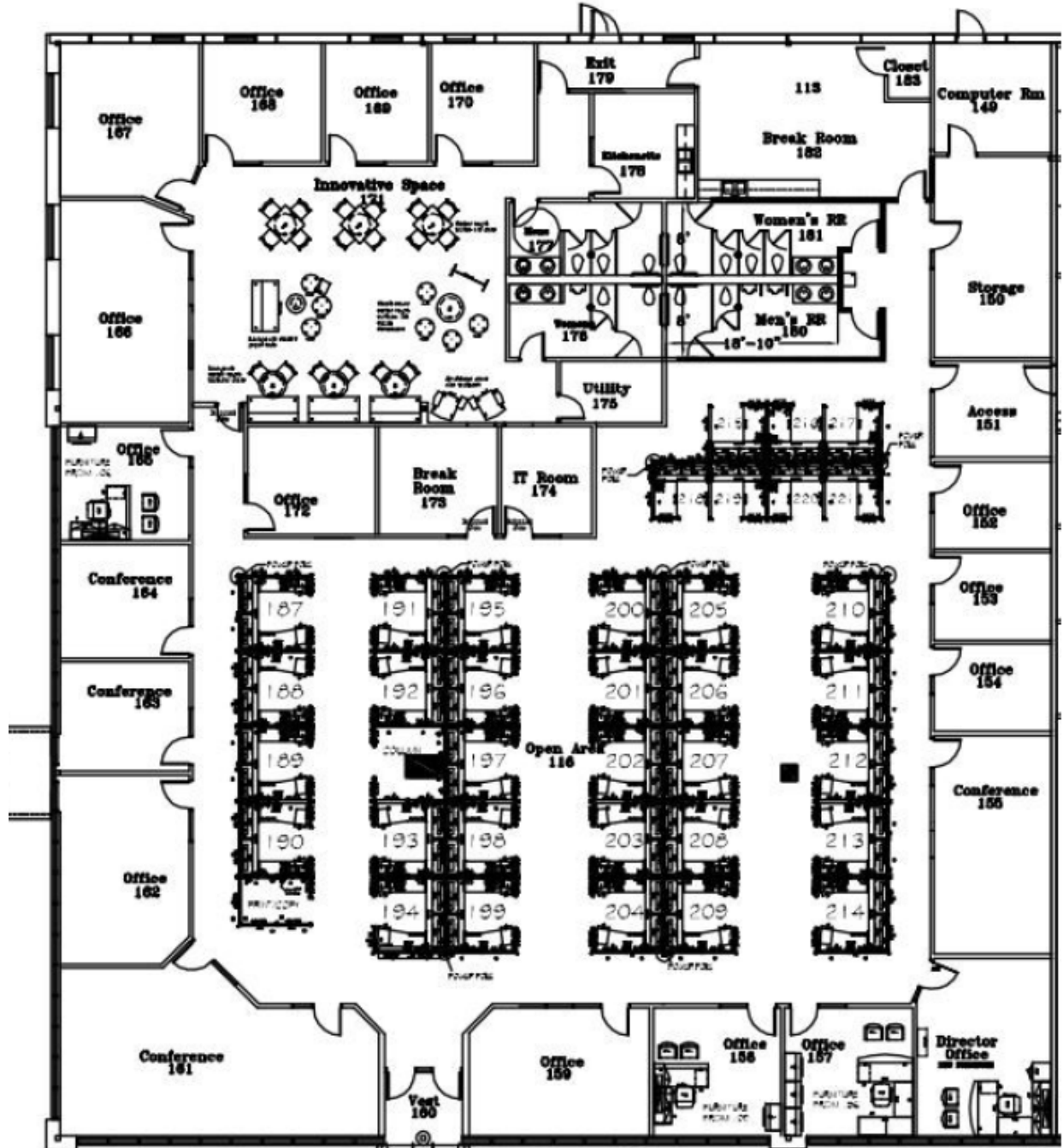
<b>DEMOGRAPHICS</b>	<b>1 MILE</b>	<b>3 MILES</b>	<b>5 MILES</b>
<b>Total Households</b>	840	17,050	75,601
<b>Total Population</b>	1,925	35,858	161,001
<b>Average HH Income</b>	\$88,141	\$99,167	\$79,258



FOR LEASE

# 6100 THORTON AVE - SUITE 200

6100 THORTON AVE - SUITE 200 DES MOINES, IA 50321



**MITCH PHILLIPS**

515.309.0922

mitch@fergusoncres.com

**MICHAEL SHINDLER**

515.720.3492

michael@fergusoncres.com

FOR LEASE

# 6100 THORTON AVE - SUITE 200

6100 THORTON AVE - SUITE 200 DES MOINES, IA 50321



**MITCH PHILLIPS**

515.309.0922

[mitch@fergusoncres.com](mailto:mitch@fergusoncres.com)

**MICHAEL SHINDLER**

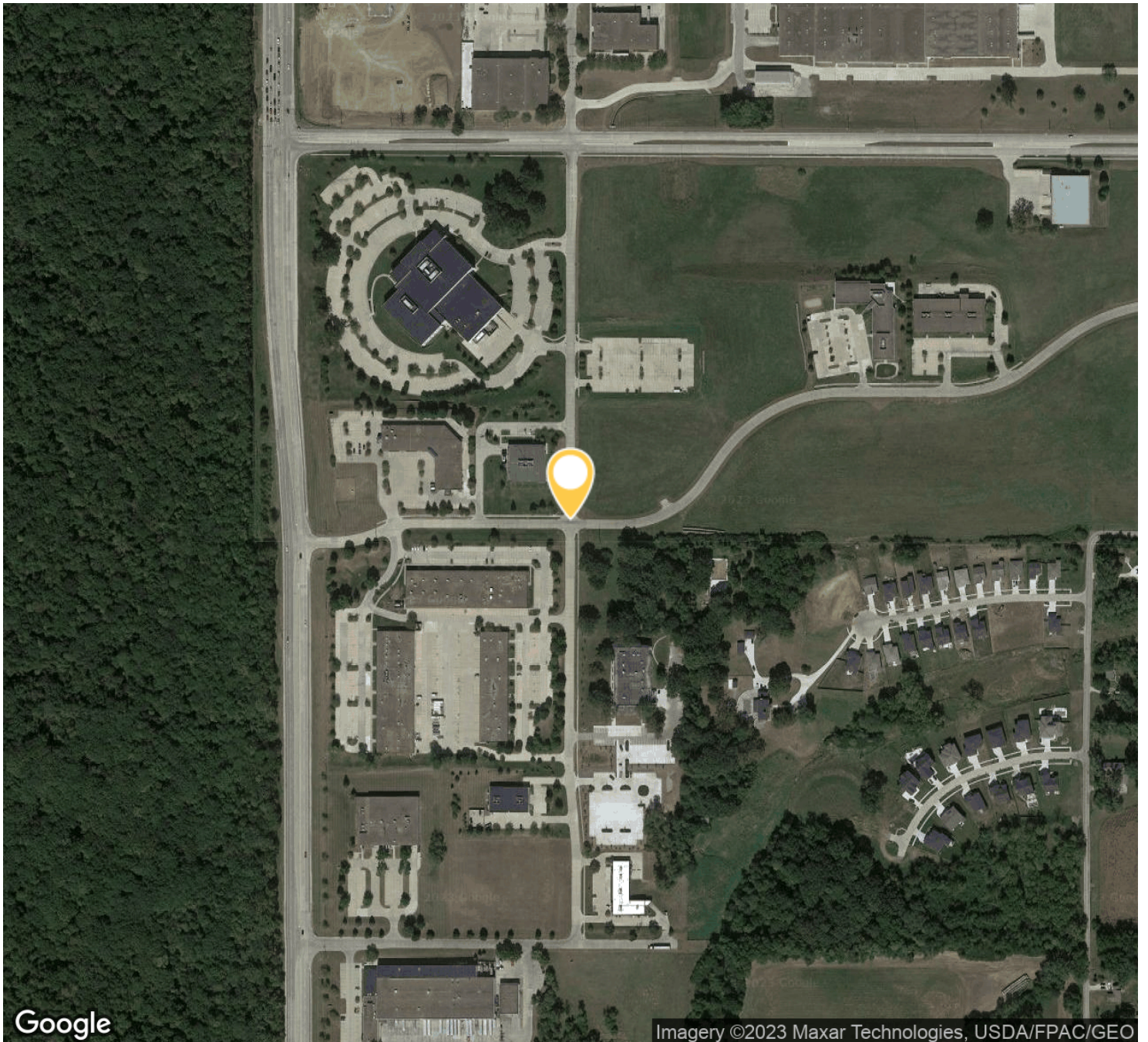
515.720.3492

[michael@fergusoncres.com](mailto:michael@fergusoncres.com)

FOR LEASE

# 6100 THORTON AVE - SUITE 200

6100 THORTON AVE - SUITE 200 DES MOINES, IA 50321



Google

Imagery ©2023 Maxar Technologies, USDA/FPAC/GEO



**MITCH PHILLIPS**

515.309.0922

mitch@fergusoncres.com

**MICHAEL SHINDLER**

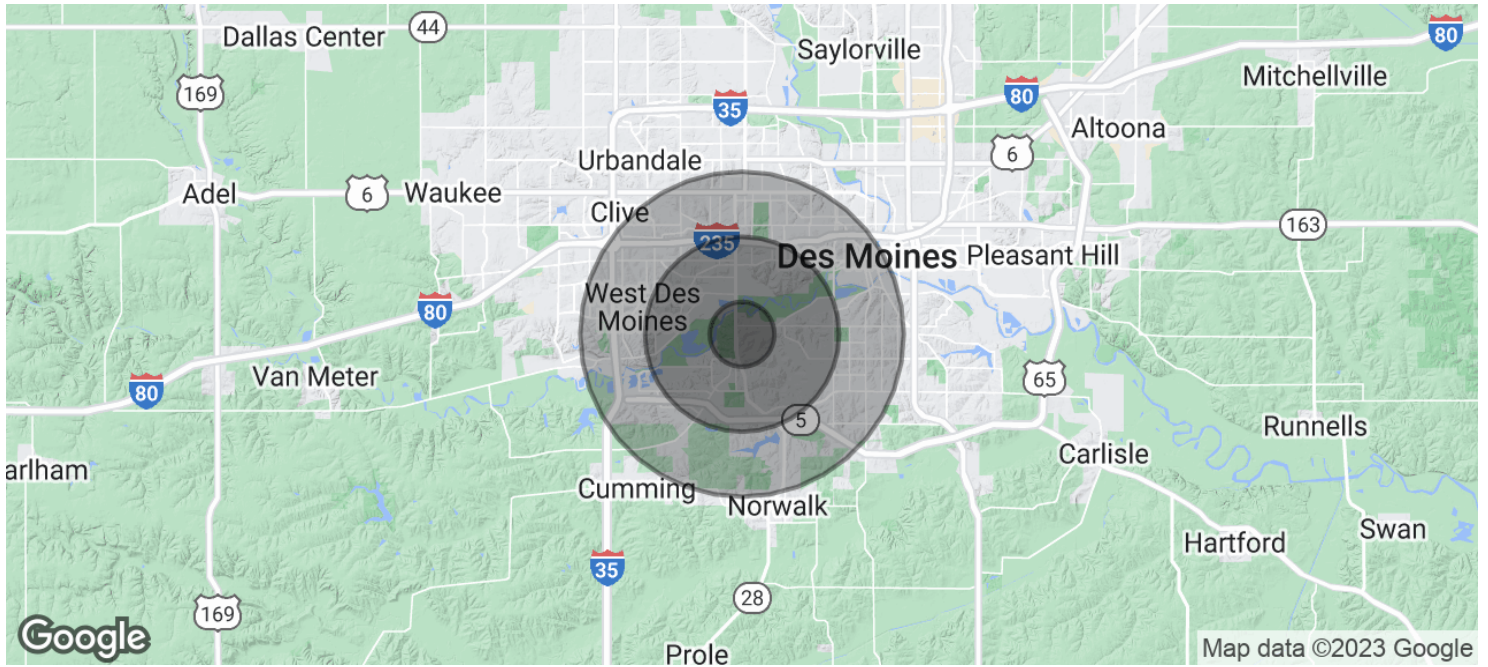
515.720.3492

michael@fergusoncres.com

FOR LEASE

# 6100 THORTON AVE - SUITE 200

6100 THORTON AVE - SUITE 200 DES MOINES, IA 50321



## POPULATION

### 1 MILE

### 3 MILES

### 5 MILES

Total Population	1,925	35,858	161,001
Average Age	34.5	40.4	37.0
Average Age (Male)	33.3	39.1	36.0
Average Age (Female)	37.2	43.1	38.2

## HOUSEHOLDS & INCOME

### 1 MILE

### 3 MILES

### 5 MILES

Total Households	840	17,050	75,601
# of Persons per HH	2.3	2.1	2.1
Average HH Income	\$88,141	\$99,167	\$79,258



**MITCH PHILLIPS**

515.309.0922

mitch@fergusoncres.com

**MICHAEL SHINDLER**

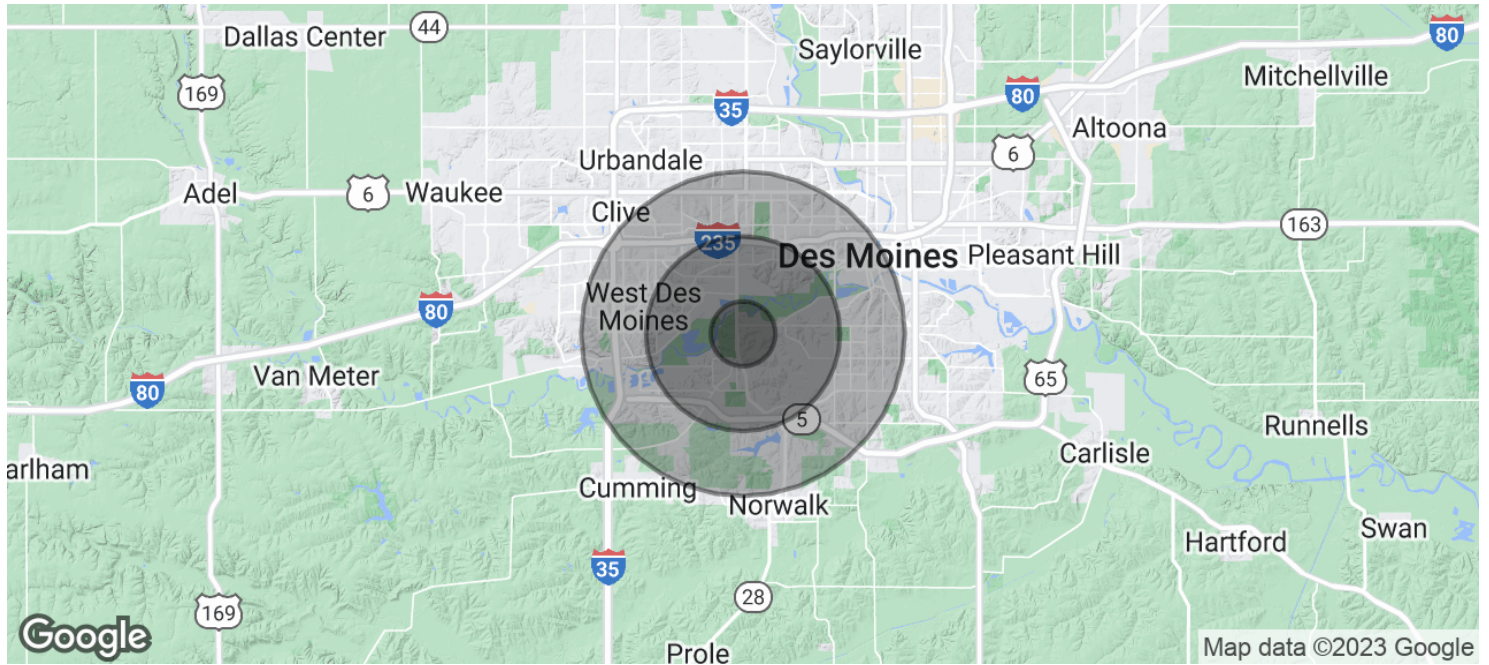
515.720.3492

michael@fergusoncres.com

FOR LEASE

# 6100 THORTON AVE - SUITE 200

6100 THORTON AVE - SUITE 200 DES MOINES, IA 50321



## Average House Value

\$209,107

\$216,716

\$194,593

\* Demographic data derived from 2020 ACS - US Census



**MITCH PHILLIPS**

515.309.0922

mitch@fergusoncres.com

**MICHAEL SHINDLER**

515.720.3492

michael@fergusoncres.com