



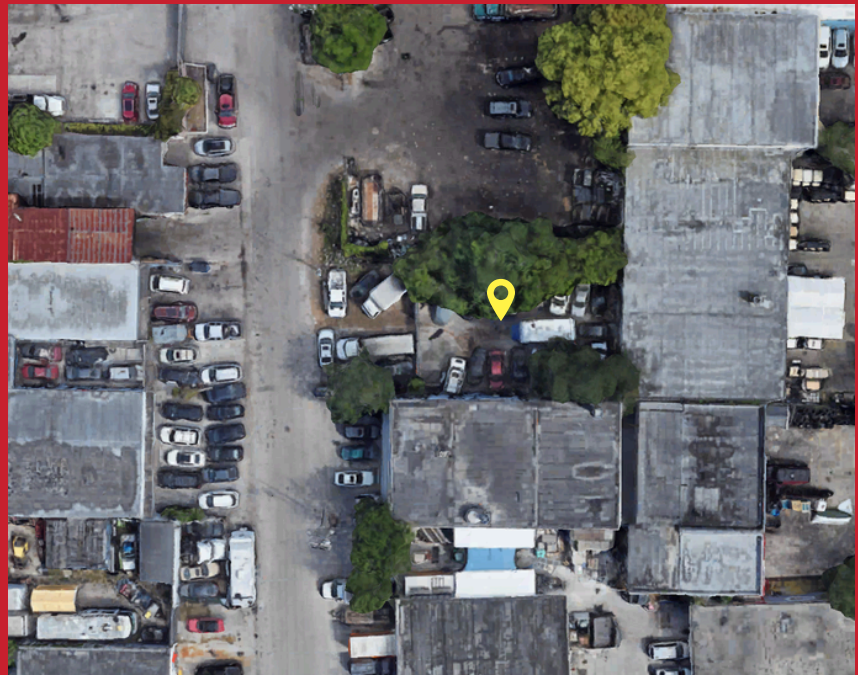
**2321-2325 SW 56 TER  
WEST PARK FL 33023  
PRIME INDUSTRIAL OUTDOOR  
STORAGE YARD IN WEST PARK**

Prime industrial yard in West Park presents a rare opportunity for businesses seeking substantial outdoor storage capacity. The property boasts a generous 6,200 sqft paved yard, providing ample space for equipment, materials, and vehicle storage. A metal fence and concrete warehouses surrounds the property. The property's liberal M-2 zoning allows for a diverse range of industrial uses, making it suitable for contractors, trucking companies, moving and storage businesses, and much more. Don't miss this opportunity to lease a property close to major highways. Lot is ready for immediate occupancy, must get city approval for use. Call today!

**PRICE: \$3,000/MONTH**

Total Size: 6,200 SF

Zoning: M-2 -



**KIMBERLY VILLAMIZAR**  
C: 954.513.8507  
E: KV@FAUSTOCOMMERCIAL.COM

**ZENOVIA VARELA**  
C: 954.348.5852  
E: ZV@FAUSTOCOMMERCIAL.COM