







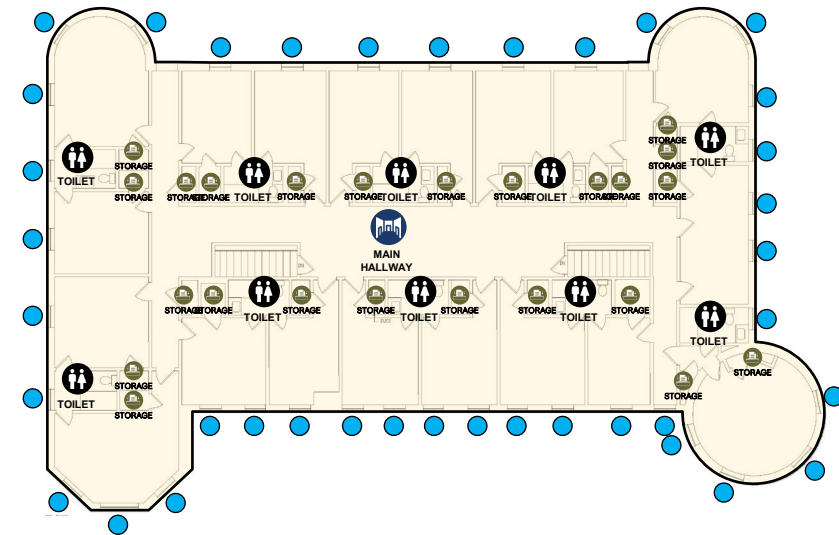
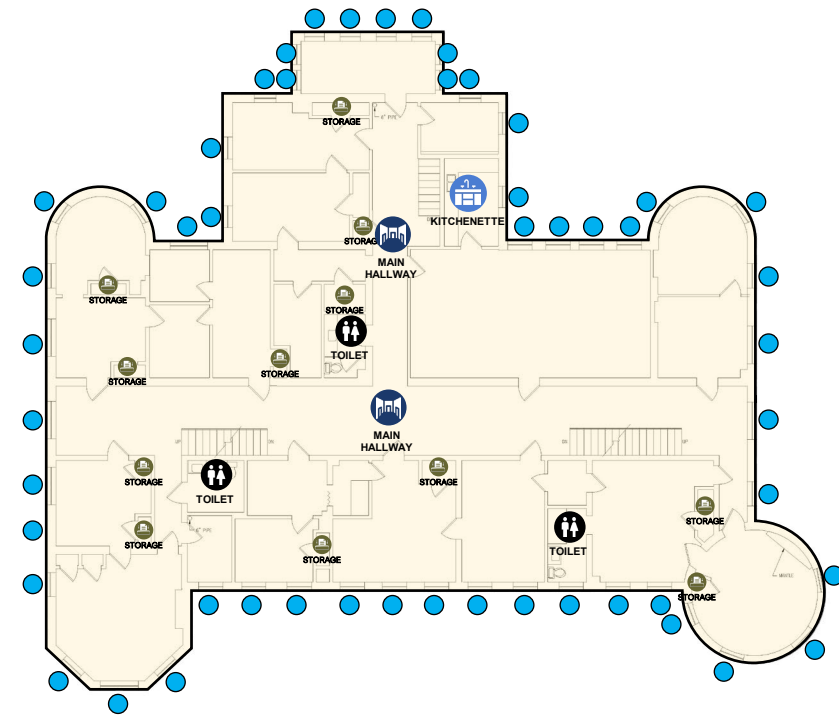
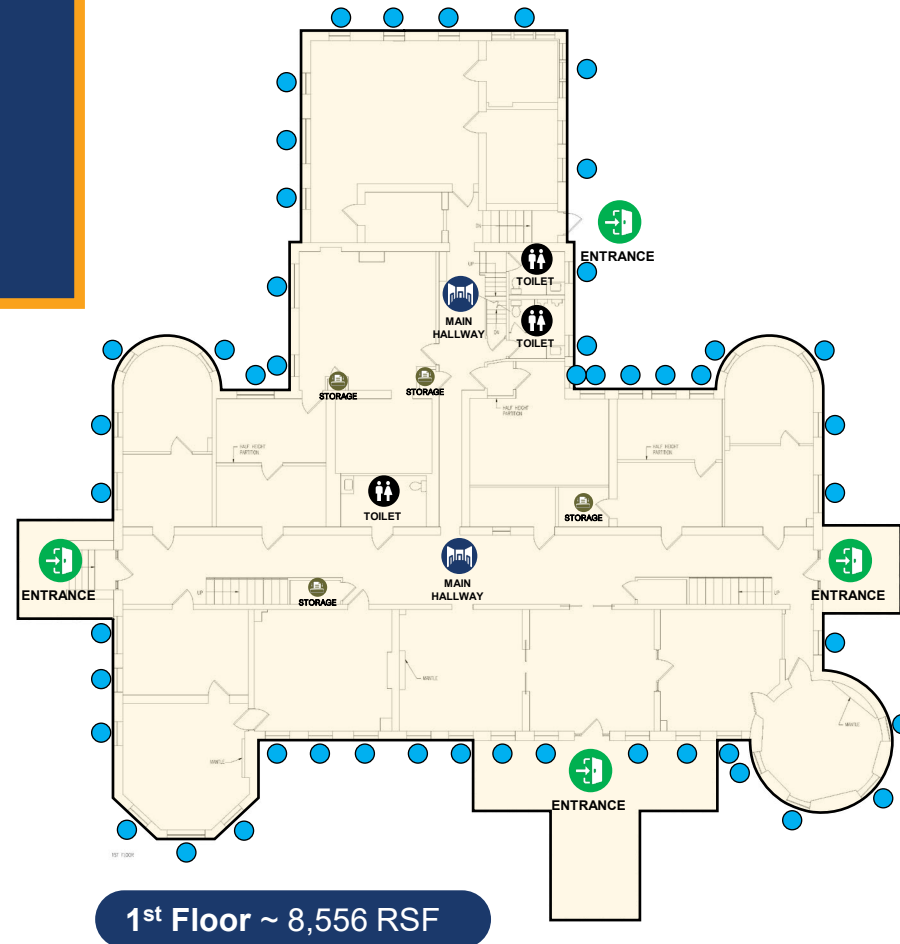


Building 5 Full Overview

- Approximately 27,538 RSF
- Three floors plus one basement level
 - 1st Floor: ≈ 8,556 RSF
 - 2nd Floor: ≈ 6,737 RSF
 - 3rd Floor: ≈ 5,697 RSF
 - Basement: ≈ 6,548 RSF
- Offered on a NNN lease structure

KEY MAP

- | | | | |
|---|----------|---|-----------------------|
|  | ENTRANCE |  | MAIN HALLWAYS |
|  | STORAGE |  | KITCHEN |
|  | TOILET |  | ADA TOILET / BATHROOM |
|  | WINDOW |  | SHOWER AREA |



Building 5 Photos

