

Riverwest Industrial Property

FOR SALE OR LEASE

3701-3729 N Holton St.
Milwaukee, WI 53212

PARADIGM
real estate
AVAILABLE
262.717.5151
PARADIGMre.com

Matt Friedman
PARADIGM Real Estate Corporation
Senior VP & Partner
(262) 717-5151
matt@paradigmre.com

11649 N Port Washington Rd
Suite 200
Mequon, WI 53092

PARADIGMre.com
info@PARADIGMre.com



OFFERING SUMMARY

ADDRESS	3701-3729 N Holton St. Milwaukee, WI 53212
BUILDING SF	16,481
LAND ACRES	.67
MIN DIVISIBLE	1,920 SF
YEAR BUILT	1946/1980
YEAR RENOVATED	2026

FINANCIAL SUMMARY

OFFERING PRICE	\$749,900
PRICE PSF	\$45.50
LEASE RATE	\$6.00 - \$8.00 per SF Modified Gross

Property Notes

- Recent updates include interior painting, new LED lights, new electrical service, roof coating
- Yard space for potential outdoor storage
- Bus line adjacent to property



PROPERTY FEATURES

NUMBER OF BUILDINGS	3
MAX CONTIGUOUS SF	16,481
MIN DIVISIBLE SF	1,920
LAND ACRES	.67
YEAR BUILT	1946/1980
YEAR RENOVATED	2026
ZONING	IL2
CONSTRUCTION	Masonry
POWER	200 amp single phase
LIGHTING	LED
CRANES	5-ton & 2-ton
ROOF	Rubber
MECHANICALS	Gas modines in shop Forced air in office

BUILDING 1

WAREHOUSE SF	13,871
OFFICE SF	1,590
CLEAR HEIGHT	14'10" - 16'6"
DRIVE-IN DOORS	(2) Two 12'x14' & (1) One 8'x10'
NOTES	Currently under renovation Divisible

UNHEATED STORAGE BUILDING

WAREHOUSE SF	1,920
CLEAR HEIGHT	10'
DRIVE-IN DOORS	1

STANDALONE OFFICE BUILDING

OFFICE SF	690
-----------	-----

- The property is located in the Riverwest neighborhood of Milwaukee, known for its vibrant arts community and historic homes. Just a short drive away is the University of Wisconsin-Milwaukee campus, offering a pool of potential tenants and foot traffic. Holton Street, where the property is situated, is a major thoroughfare connecting various neighborhoods and businesses in
- The nearby Estabrook Park provides green space and recreational opportunities for employees or customers. Several local businesses, such as coffee shops, restaurants, and retail stores, are in close proximity, enhancing the convenience and amenities available to tenants of the property.

MANUFACTURING PROPERTY RECORD CARD

STATE OF WISCONSIN

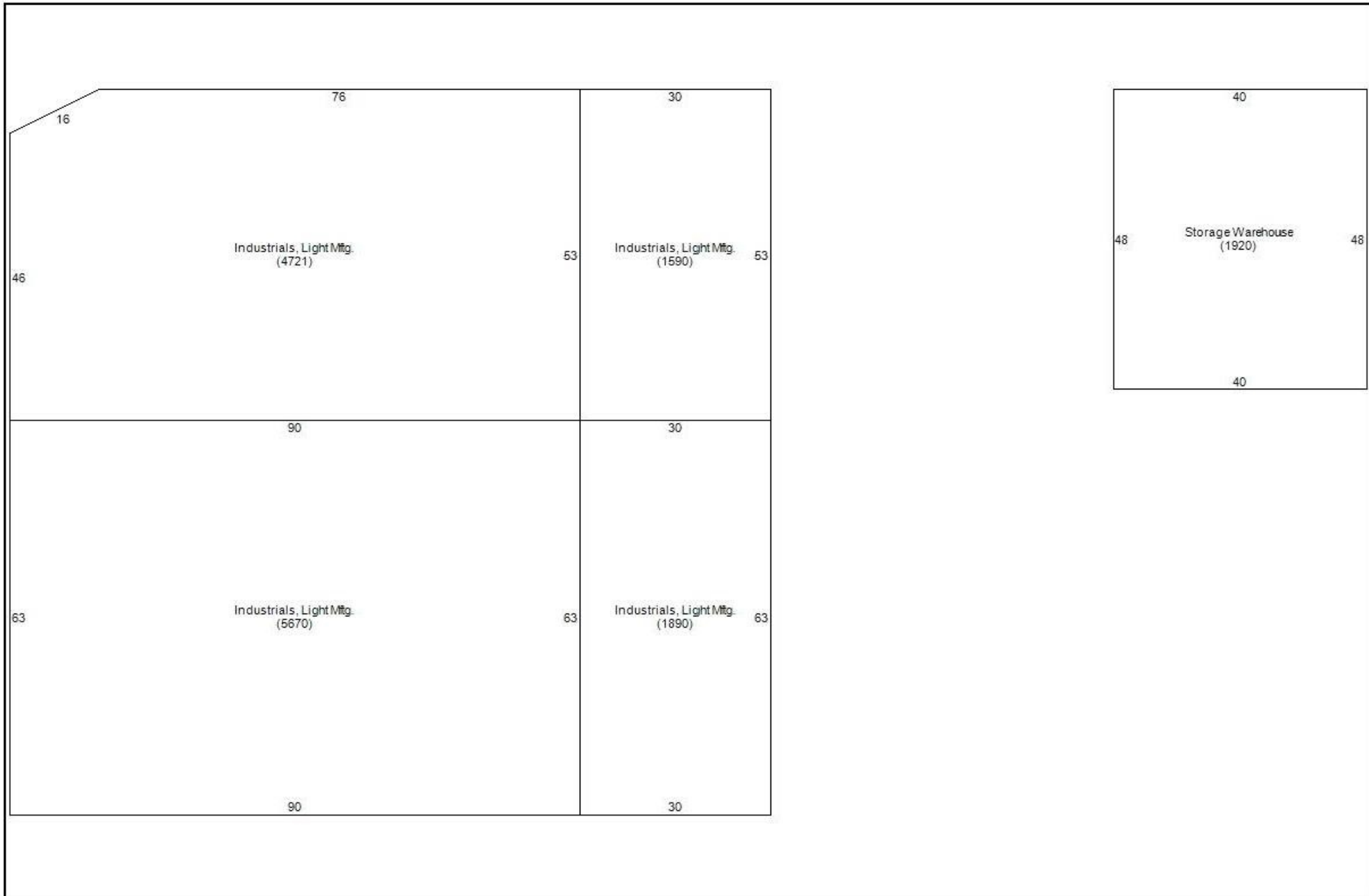
CoMuni: 40 251

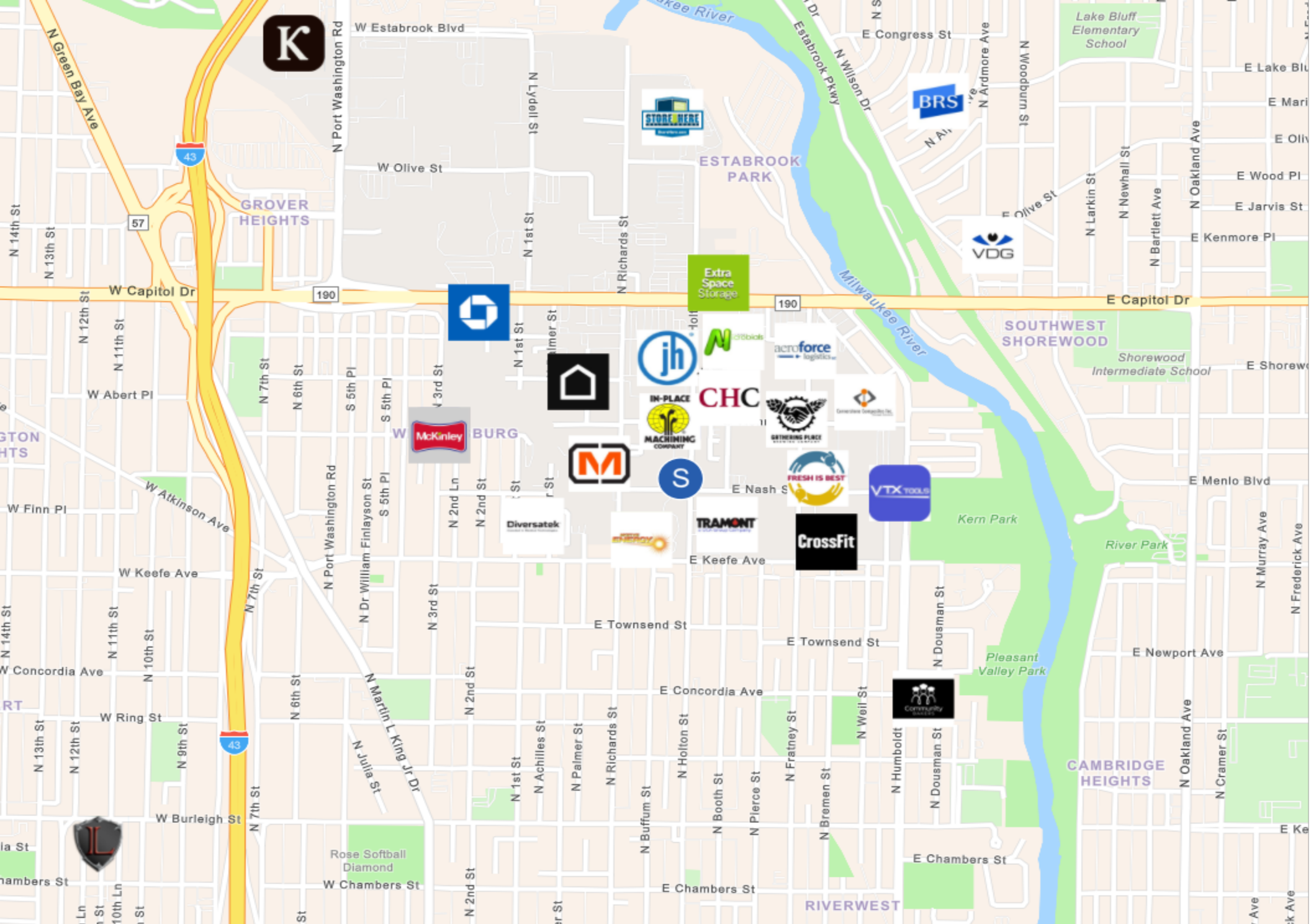
Local Parcel #: 274-0034-100

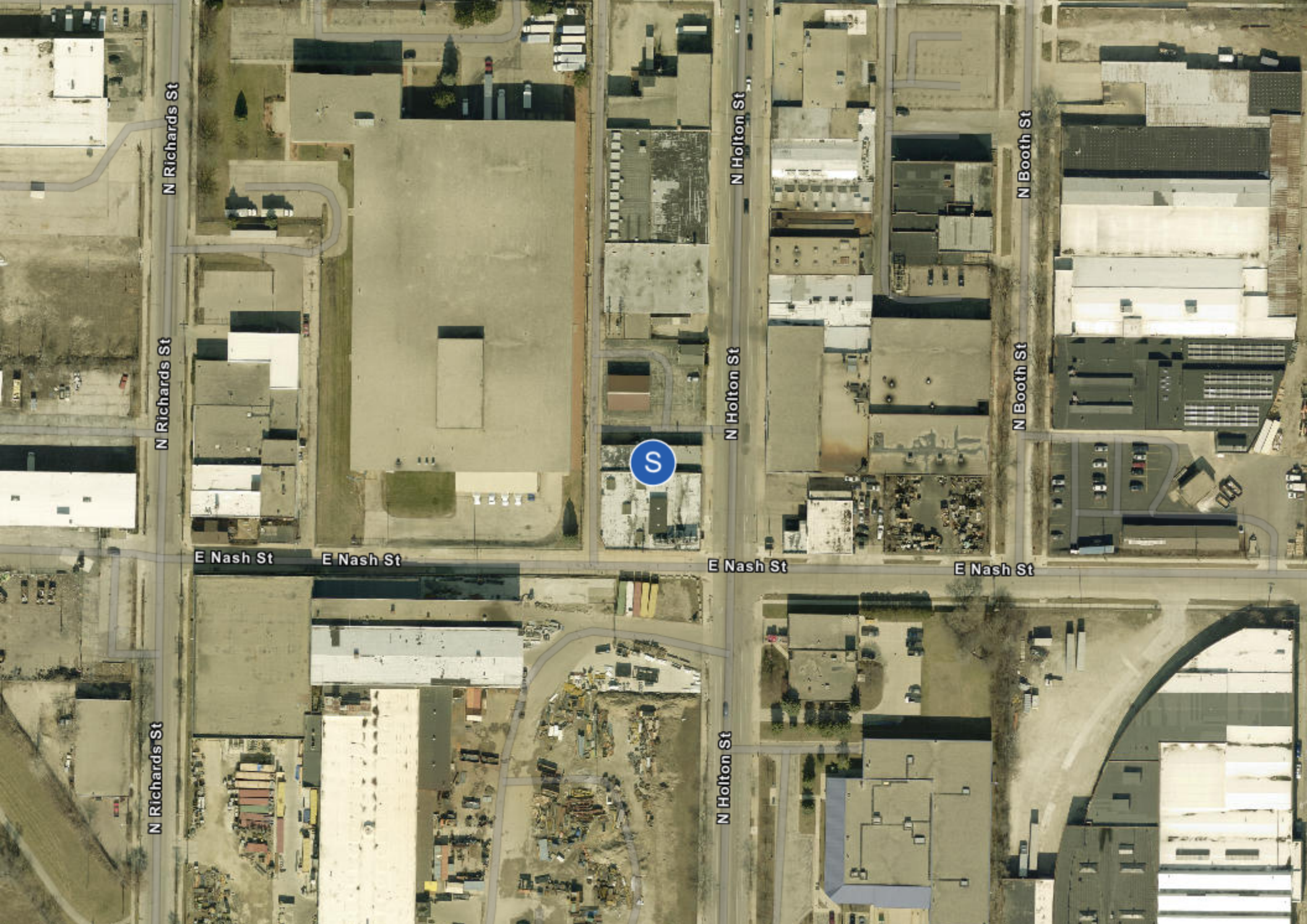
Situs : 3701 N HOLTON ST

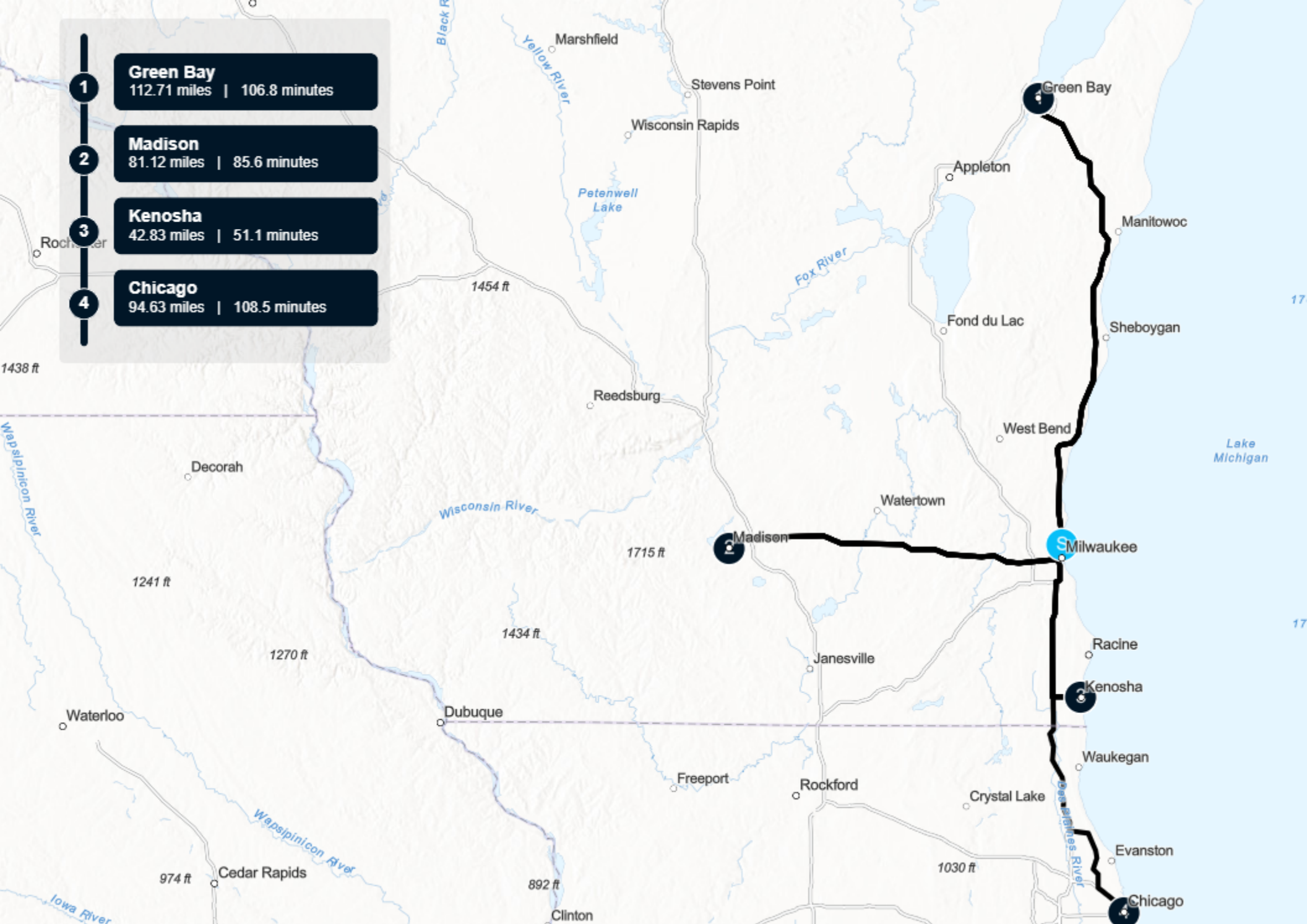
Class: 3-Manufacturing

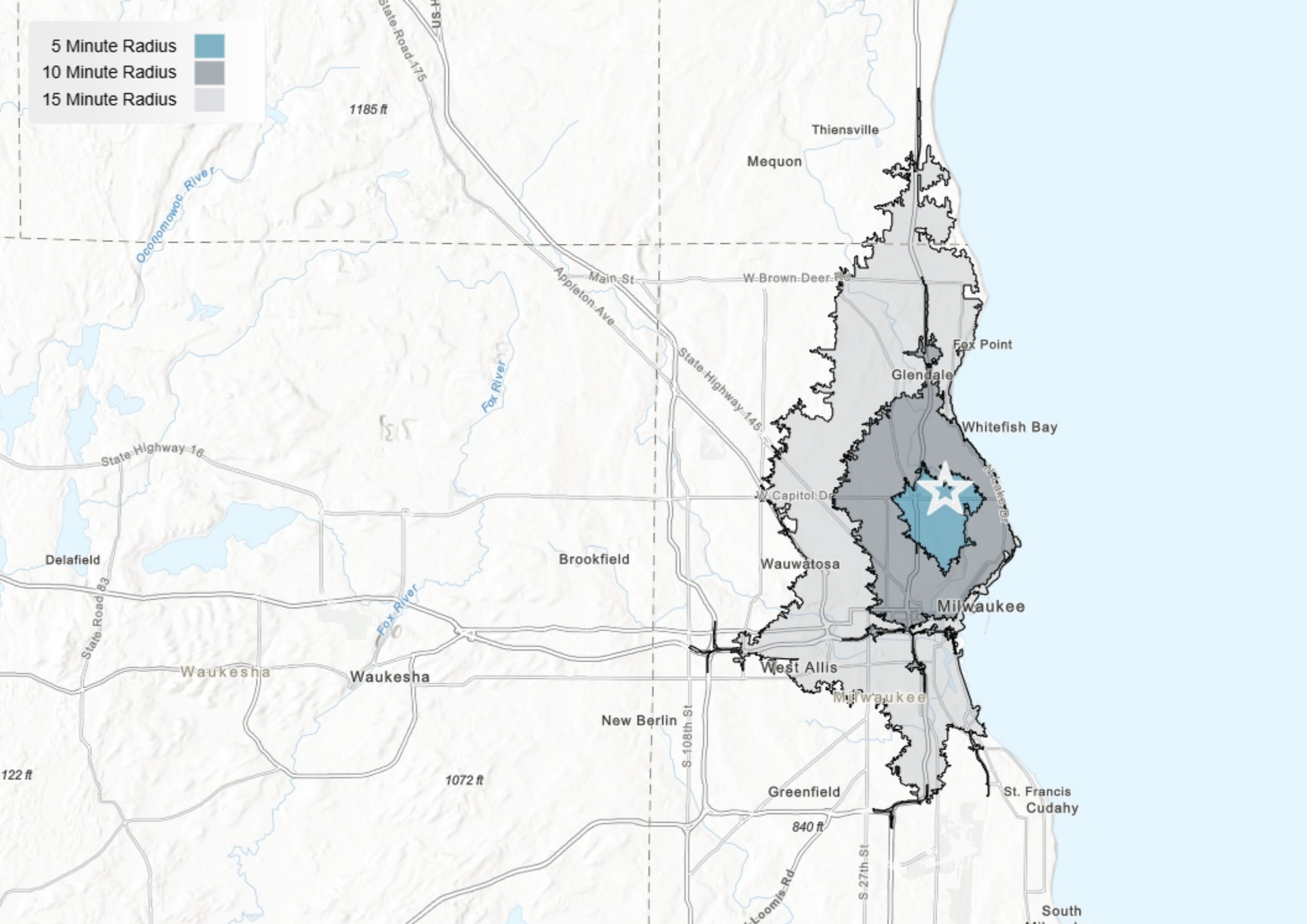
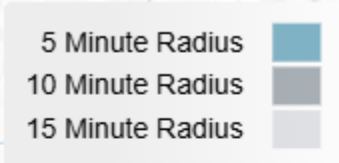
PARID: 000004746













STATE OF WISCONSIN BROKER DISCLOSURE



NON-RESIDENTIAL CUSTOMERS

Wisconsin law requires all real estate licenses to give the following information about brokerage services to prospective customers. Prior to negotiating on your behalf, the Brokerage Firm, or an agent associated with the firm, must provide you the following disclosure statement.

Disclosure to Customers

You are a customer of the brokerage firm (hereinafter Firm). The Firm is either an agent of another party in the transaction or a subagent of another firm that is the agent of another party in the transaction. A broker or a salesperson acting on behalf of the Firm may provide brokerage services to you. Whenever the Firm is providing brokerage services to you, the Firm and its brokers and salespersons (hereinafter Agents) owe you, the customer, the following duties:

The duty to provide brokerage services to you fairly and honestly, the duty to exercise reasonable skill and care in providing brokerage services to you, the duty to provide you with accurate information about market conditions within a reasonable time if you request it, unless disclosure of the information is prohibited by law, the duty to disclose to you in writing certain Material Adverse Facts about a property, unless disclosure of the information is prohibited by law, the duty to protect your confidentiality. Unless the law requires it, the Firm and its Agents will not disclose your confidential information or the confidential information of other parties, the duty to safeguard trust funds and other property held by the Firm or its Agents, the duty, when negotiating, to present contract proposals in an objective and unbiased manner and disclose the advantages and disadvantages of the proposals.

Notice About Sex Offender Registry

You may obtain information about the sex offender registry and persons registered with the registry by contacting the Wisconsin Department of Corrections on the Internet at <http://www.doc.wi.gov> or by telephone at 608-240-5830.

Please review this information carefully. An Agent of the Firm can answer your questions about brokerage services, but if you need legal advice, tax advice, or a professional home inspection, contact an attorney, tax advisor, or home inspector. This disclosure is required by section 452.135 of the Wisconsin statutes and is for information only. It is a plain-language summary of the duties owed to a customer under section 452.133(1) of the Wisconsin statutes.

Confidentiality Notice to Customers

The Firm and its Agents will keep confidential any information given to the Firm or its Agents in confidence, or any information obtained by the Firm and its Agents that a reasonable person would want to be kept confidential, unless the information must be disclosed by law or you authorize the Firm to disclose particular information. The Firm and its Agents shall continue to keep the information confidential after the Firm is no longer providing brokerage services to you.

The following information is required to be disclosed by law:

Material Adverse Facts, as defined in section 452.01(5g) of the Wisconsin Statutes (see "Definition of Adverse Facts").

Any facts known by the Firm or its Agents that contradict any information included in a written inspection report on the property or real estate is the subject of the transaction. To ensure that the Firm and its Agents are aware of what specific information you consider confidential, you may list that information below or provide that information to the Firm or its Agents by other means. At a later time, you may also provide the Firm or its Agents with other information you consider to be confidential.

CONFIDENTIAL INFORMATION: _____

NON- CONFIDENTIAL INFORMATION: _____

Definition of Material Adverse Facts

A "Material Adverse Fact" is defined in Wis. Stat. 452.01(5g) as an Adverse Fact that a party indicates is of such significance, or that is generally recognized by a competent licensee as being of such significance to a reasonable party, that it affects or would affect the party's decision to enter into a contract or agreement concerning a transaction or affects or would affect the party's decision about the terms of such a contract or agreement. An "Adverse Fact" is defined in Wis. Stat. 452.01(1e) as a condition or occurrence that a competent licensee generally recognizes will significantly and adversely affect the value of the property, significantly reduce the structural integrity of improvements to real estate, or present a significant health risk to occupants of the property; or information that indicates that a party to a transaction is not able to or does not intend to meet his or her obligations under a contract or agreement made concerning the transaction.

No representation is made as to the legal validity of any provision or the adequacy of any provision in any specific transaction. Information shown herein was provided by Seller/Lessor and/or third parties and has not been verified by the broker unless otherwise indicated.

PARADIGMre.com

(262) 717-5151

info@paradigmre.com



11649 N Port Washington Rd.

Suite 200

Mequon, WI 53092

Riverwest Industrial Property

FOR SALE OR LEASE

3701-3729 N Holton St.
Milwaukee, WI 53212



Matt Friedman

PARADIGM Real Estate Corporation
Senior VP & Partner
(262) 717-5151
matt@paradigmre.com



Brokerage License No.: 937948-91
<https://PARADIGMre.com/>

11649 N Port Washington Rd, Suite 200, Mequon, WI 53092