

OFFICE/WAREHOUSE SPACE FOR LEASE

821 E WARREN ST

GARDNER, KS

AREA
REAL ESTATE ADVISORS



PROPERTY HIGHLIGHTS

± 3,525 SF available (± 500 SF office space)

Available 09/30/26

Dock and drive-in door loading

16'-18' clear height

One block south of Main Street & Moonlight Road

Four minutes west of I-35

Lease rate: \$3,085/month Gross plus CAM

MORE INFORMATION

JAY HAWKINS

JHAWKINS@OPENAREA.COM

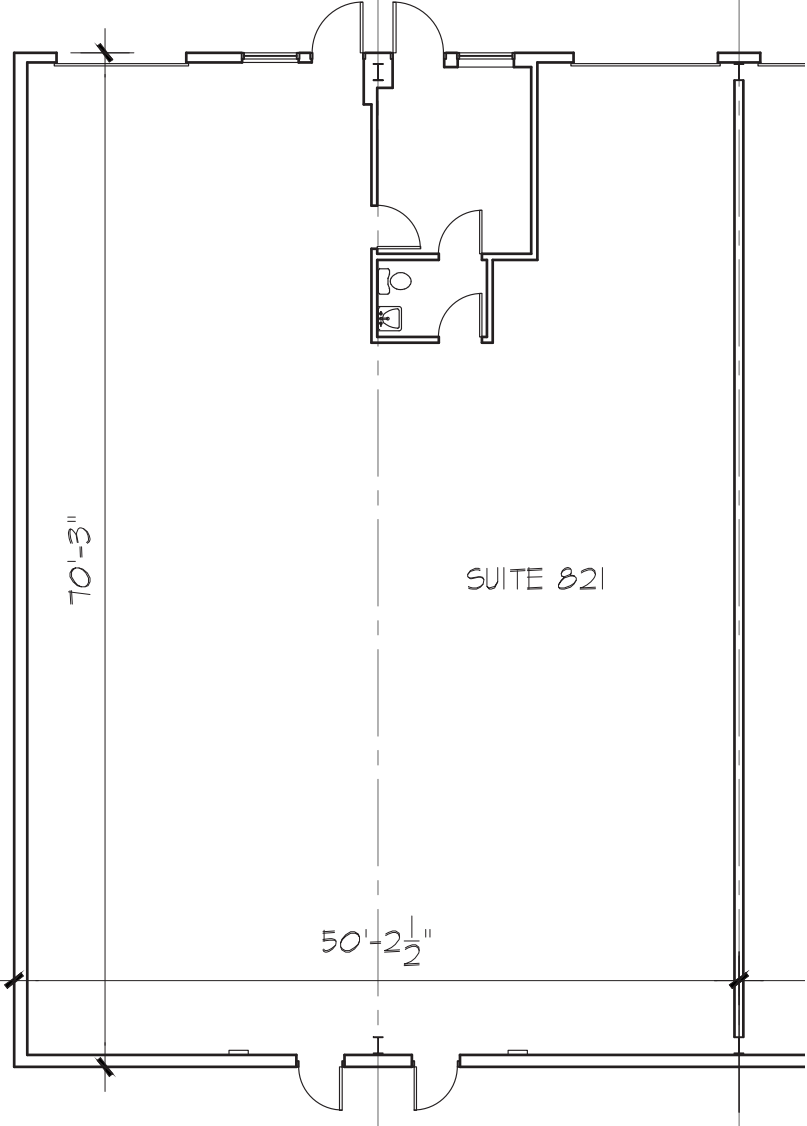
816.895.4808

DREW HARDING

DHARDING@OPENAREA.COM

816.777.2859

FLOOR PLAN



SUITE 821

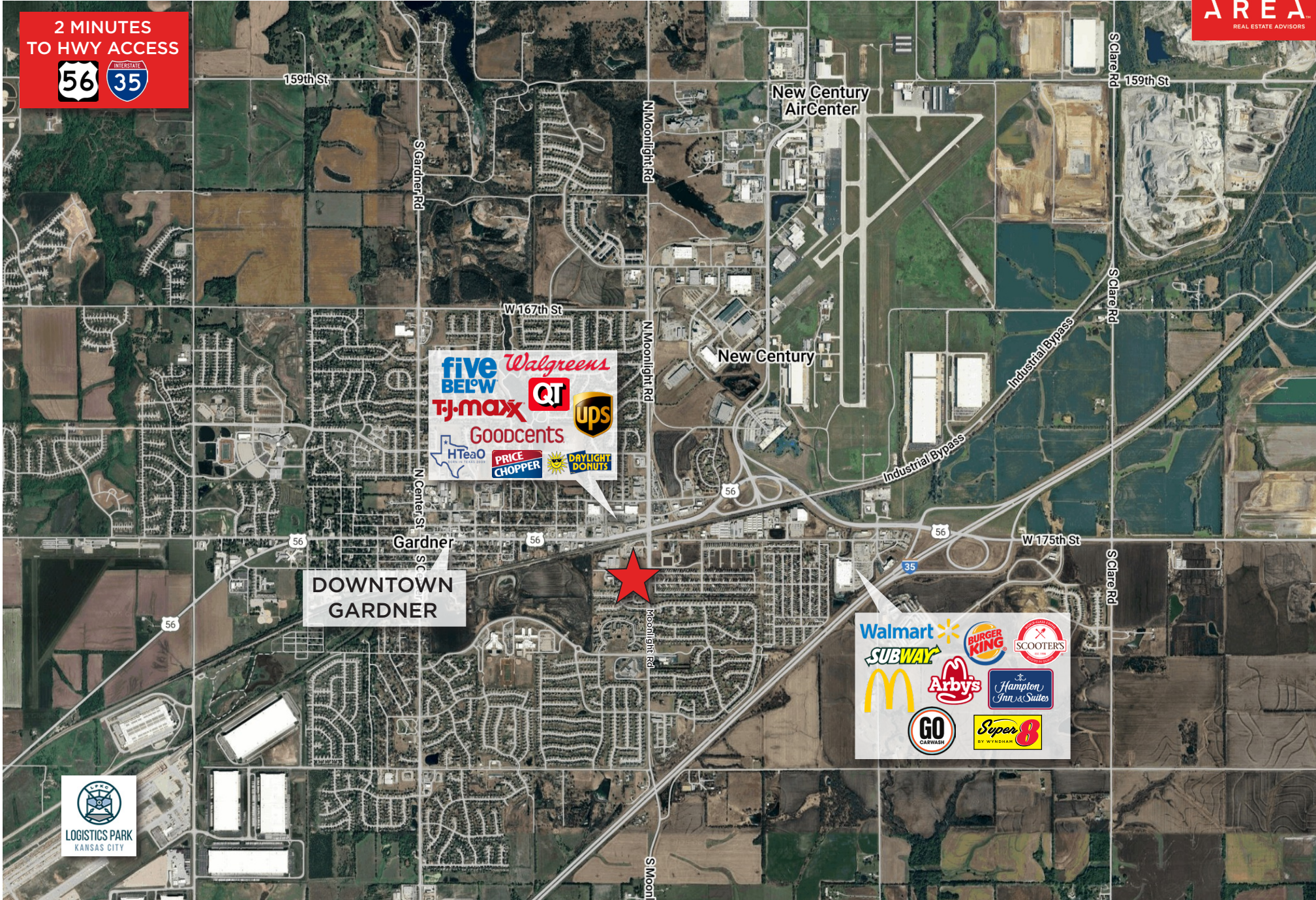
± 3,525 SF available (± 500 SF office space)

One drive-in loading door

16'-18' clear height



AERIAL VIEW



The information used to create this brochure was gathered from sources deemed reliable. Though we do not doubt its accuracy, we do not guarantee or warranty it. You and your advisors should conduct a careful independent investigation of the information to determine your satisfaction and suitability.