

**UP TO
12,334 SF
FOR LEASE**

700 HIGHLANDER

Arlington, Texas 76015

FLOOR PLANS



CONTACT

Vic Meyer | 817.710.1113 | vmeyer@holtlunsford.com
Reilly Clark | 817.632.6157 | rclark@holtlunsford.com



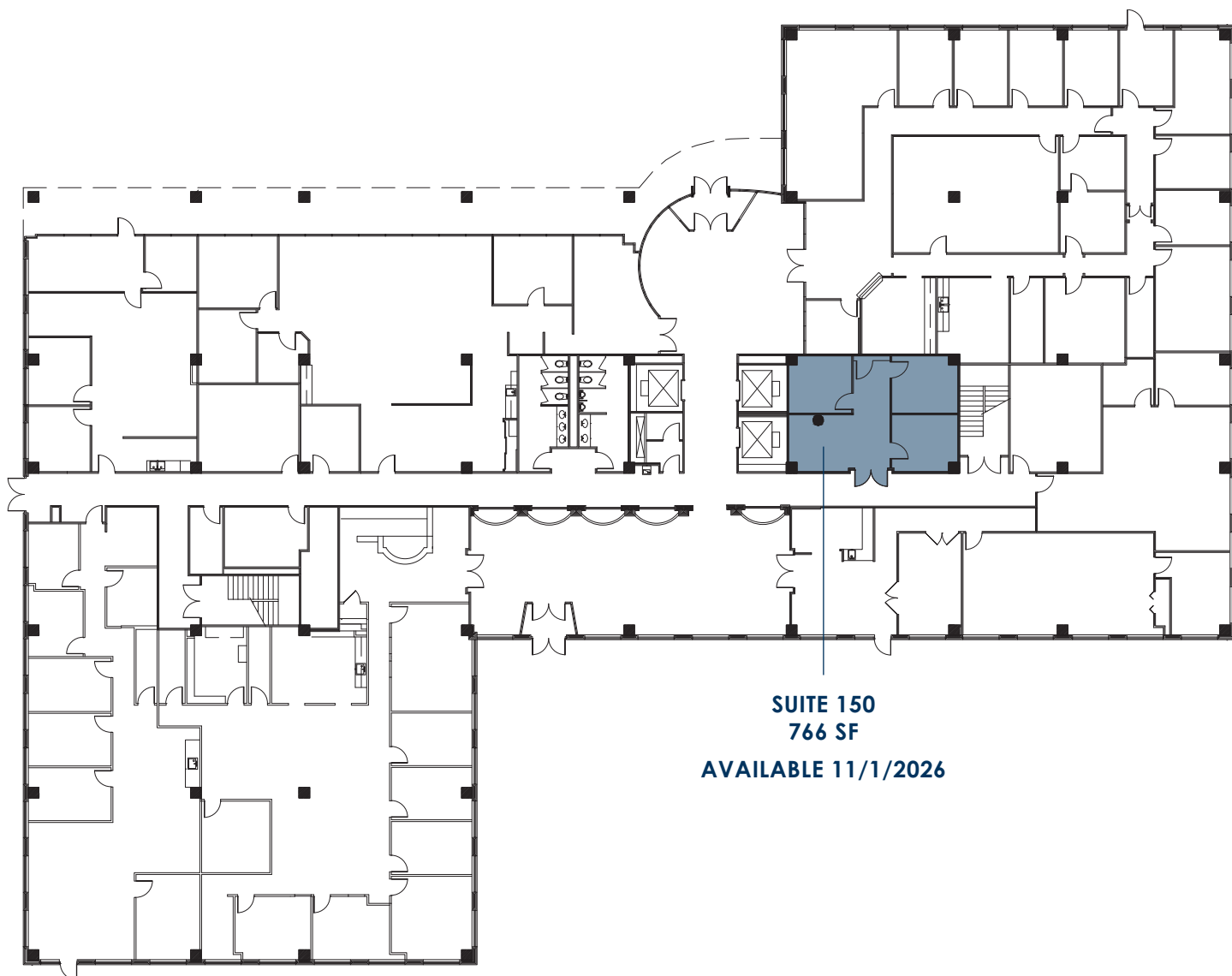
The information is provided by sources deemed reliable, however, Holt Lunsford Commercial makes no guarantees, warranties or representations as to the completeness or accuracy thereof.

**UP TO
12,334 SF
FOR LEASE**

700 HIGHLANDER

Arlington, Texas 76015

FLOORPLAN FLOOR 1



CONTACT

Vic Meyer | 817.710.1113 | vmeyer@holtlunsford.com
Reilly Clark | 817.632.6157 | rclark@holtlunsford.com



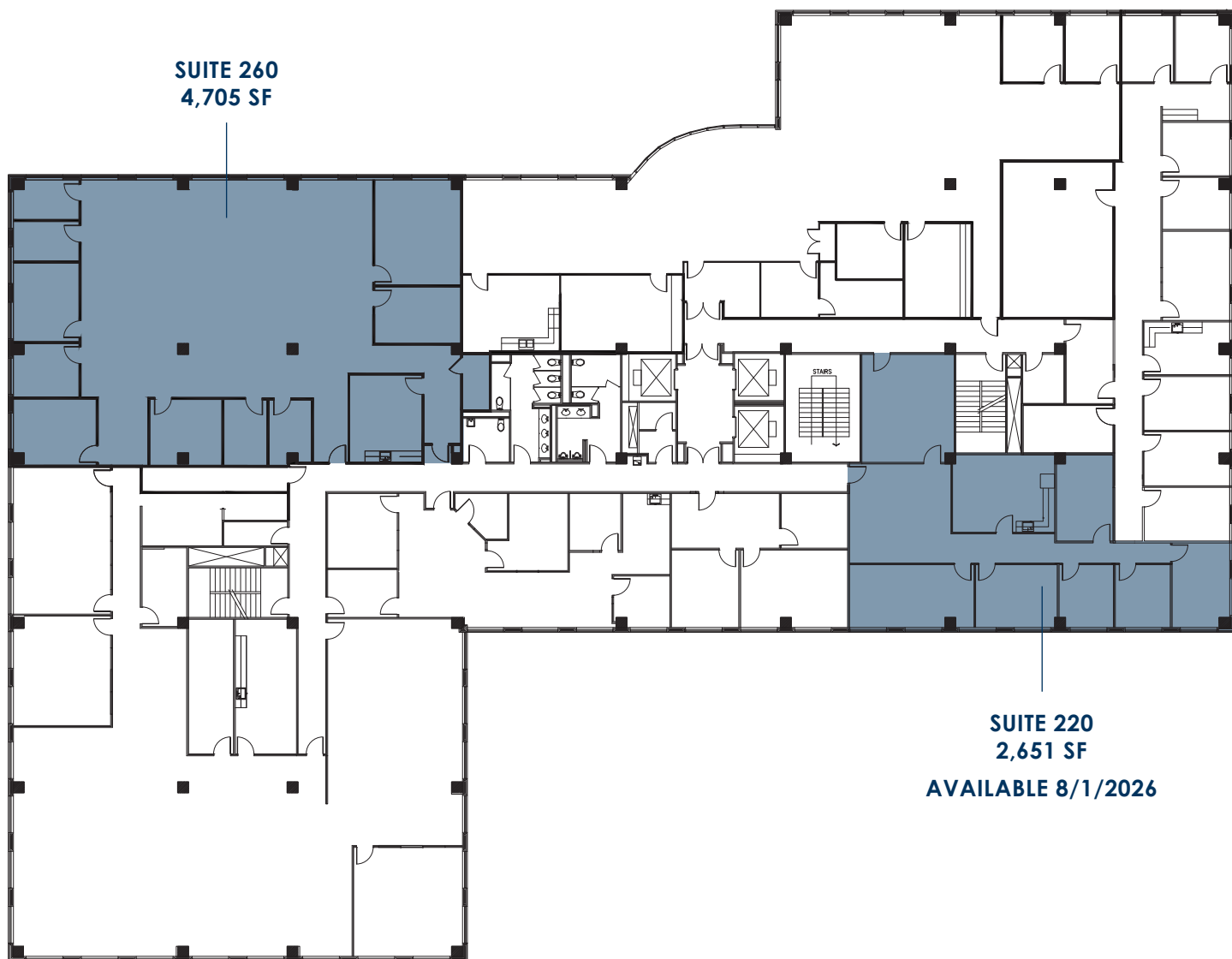
The information is provided by sources deemed reliable, however, Holt Lunsford Commercial makes no guarantees, warranties or representations as to the completeness or accuracy thereof.

**UP TO
12,334 SF
FOR LEASE**

700 HIGHLANDER

Arlington, Texas 76015

FLOORPLAN FLOOR 2



**SUITE 260
4,705 SF**

**SUITE 220
2,651 SF
AVAILABLE 8/1/2026**



CONTACT

Vic Meyer | 817.710.1113 | vmeyer@holtlunsford.com
Reilly Clark | 817.632.6157 | rclark@holtlunsford.com

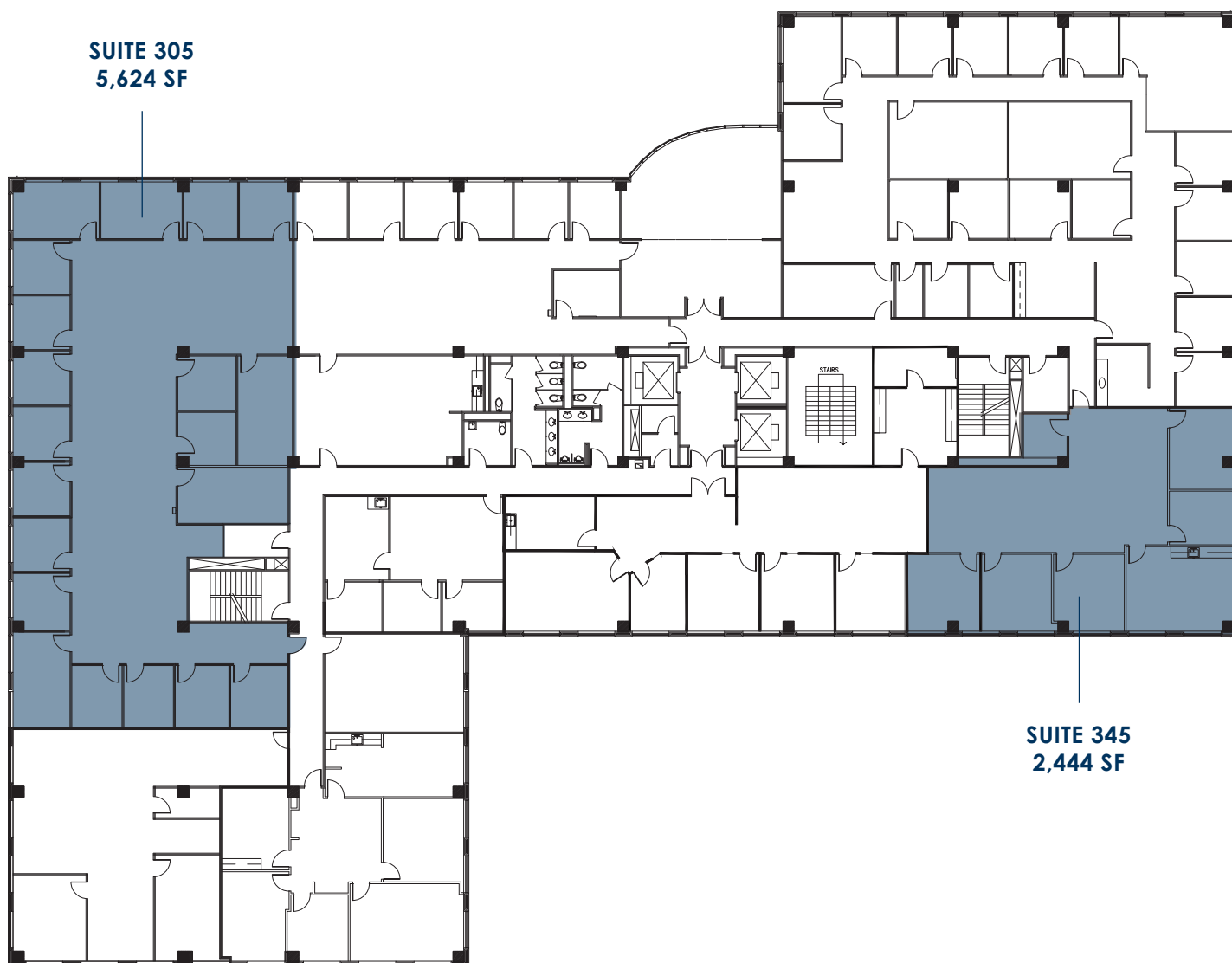
The information is provided by sources deemed reliable, however, Holt Lunsford Commercial makes no guarantees, warranties or representations as to the completeness or accuracy thereof.

**UP TO
12,334 SF
FOR LEASE**

700 HIGHLANDER

Arlington, Texas 76015

FLOORPLAN FLOOR 3



**SUITE 305
5,624 SF**

**SUITE 345
2,444 SF**

CONTACT

Vic Meyer | 817.710.1113 | vmeyer@holtlunsford.com
Reilly Clark | 817.632.6157 | rclark@holtlunsford.com



The information is provided by sources deemed reliable, however, Holt Lunsford Commercial makes no guarantees, warranties or representations as to the completeness or accuracy thereof.

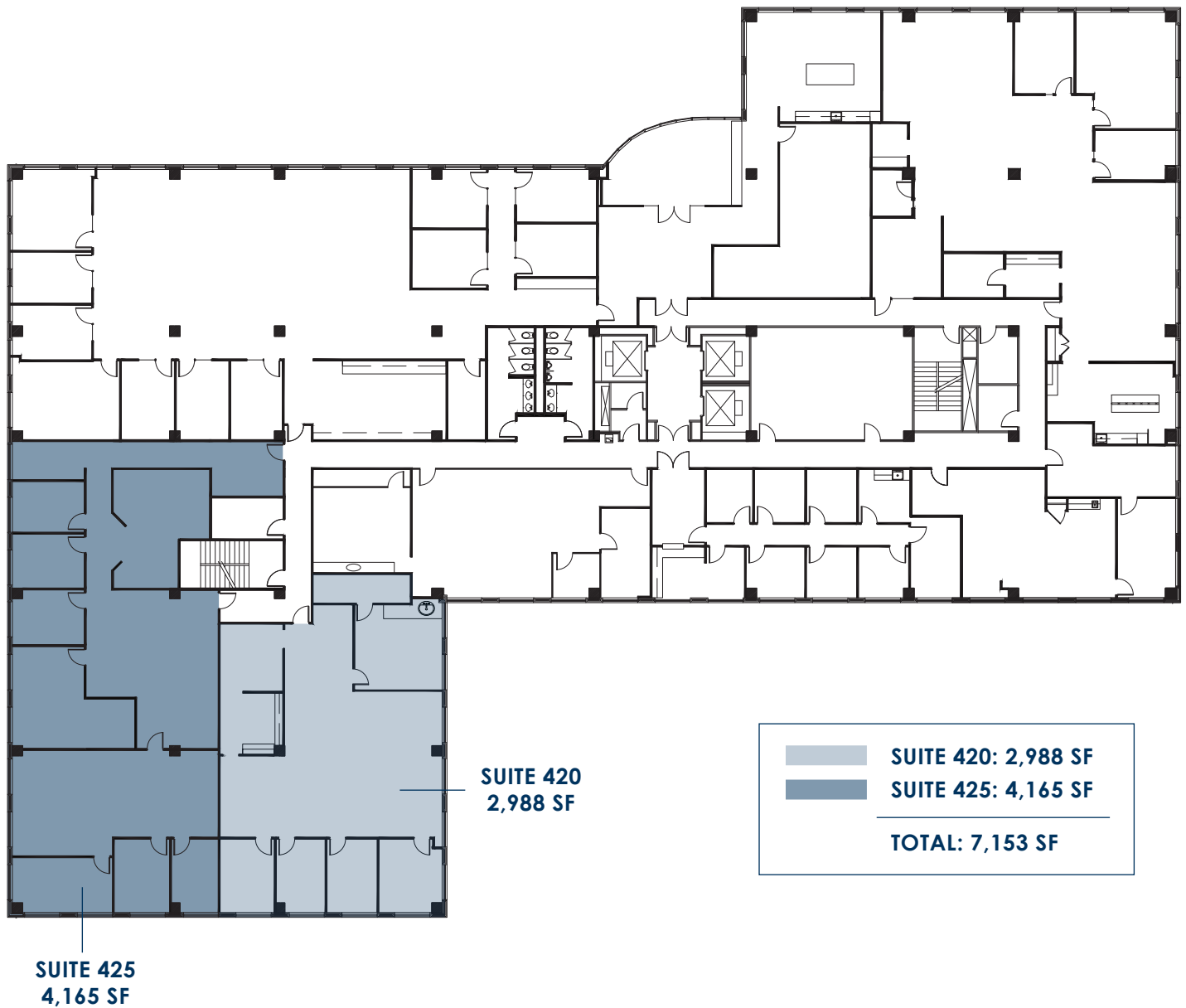
**UP TO
12,334 SF
FOR LEASE**

700 HIGHLANDER

Arlington, Texas 76015

FLOORPLAN FLOOR 4

7,153 SF of contiguous space



CONTACT

Vic Meyer | 817.710.1113 | vmeyer@holtlunsford.com
Reilly Clark | 817.632.6157 | rclark@holtlunsford.com



The information is provided by sources deemed reliable, however, Holt Lunsford Commercial makes no guarantees, warranties or representations as to the completeness or accuracy thereof.

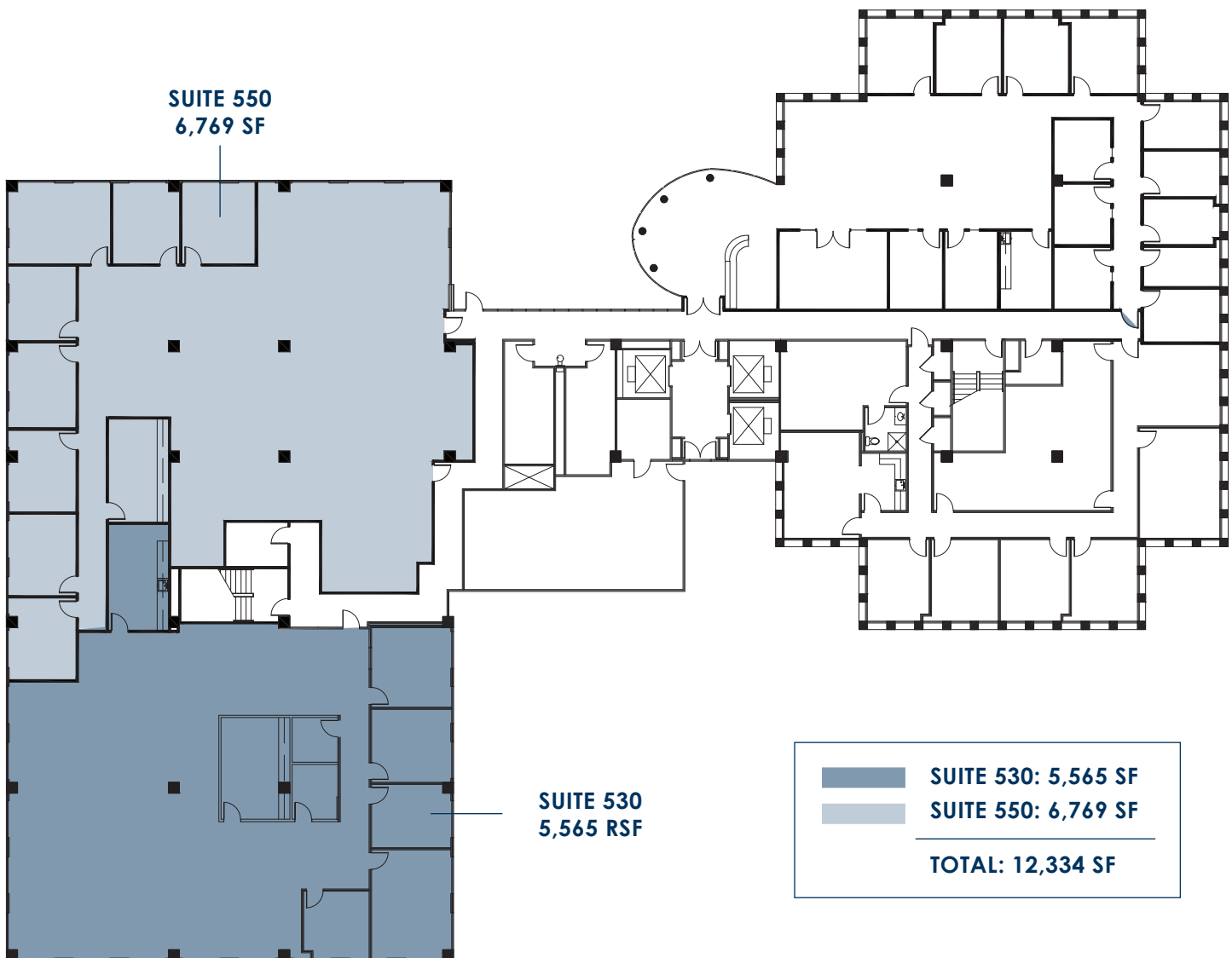
**UP TO
12,334 SF
FOR LEASE**

700 HIGHLANDER

Arlington, Texas 76015

FLOORPLAN FLOOR 5

12,334 SF of contiguous space



CONTACT

Vic Meyer | 817.710.1113 | vmeyer@holtlunsford.com
Reilly Clark | 817.632.6157 | rclark@holtlunsford.com



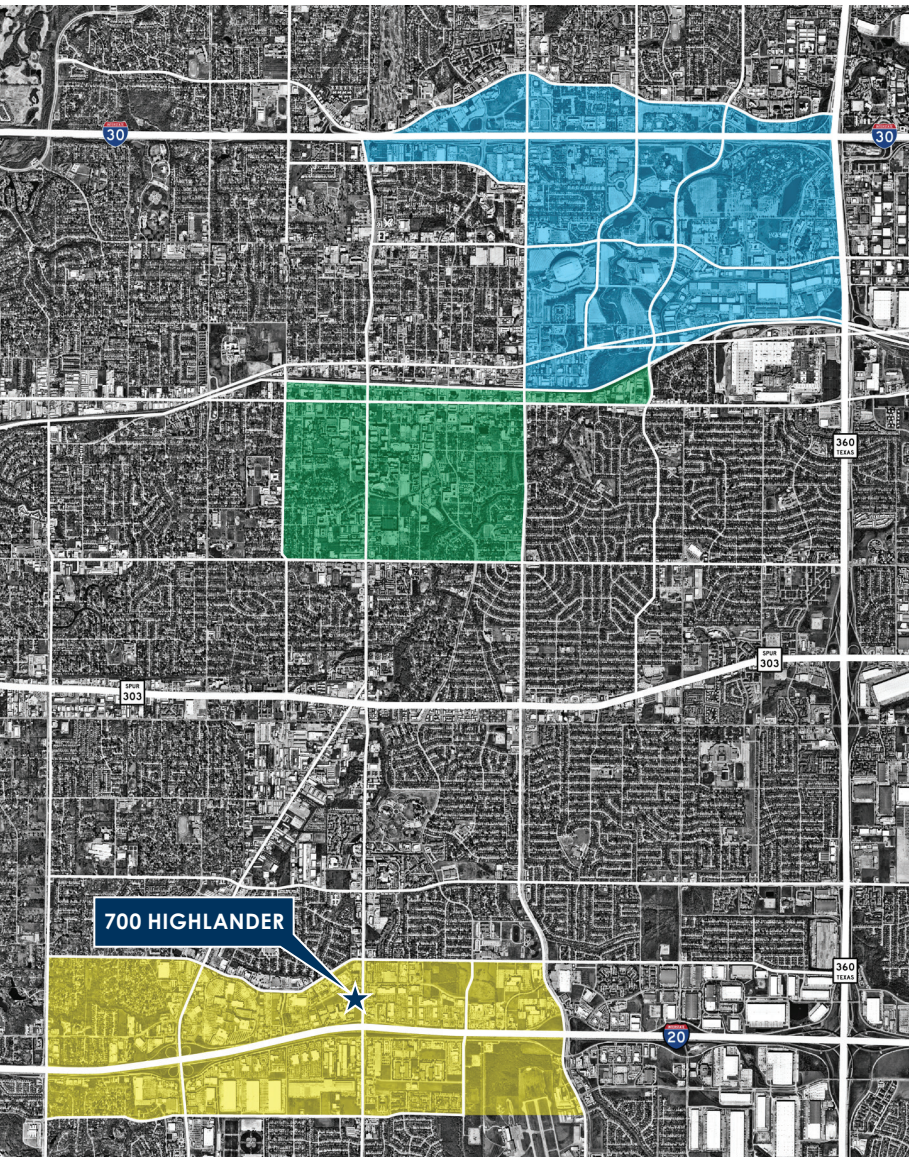
The information is provided by sources deemed reliable, however, Holt Lunsford Commercial makes no guarantees, warranties or representations as to the completeness or accuracy thereof.

UP TO
12,334 SF
FOR LEASE

700 HIGHLANDER

Arlington, Texas 76015

AMENITY MAP



Arlington Highlands
USMD Hospital
Medical City Arlington
GM Financial
Arlington Municipal Airport
Baylor Orthopedic and Spine Hospital
Costco
Courtyard by Marriot
Residence Inn
La Quinta Inn & Suites
Overture Highlands 55+ Luxury Apartments
The Parks Mall

University of Texas at Arlington
Urban Union
• Legal Draft Beer Company
• Cane Rosso
• Topsy Oak
• Grease Monkey
Arlington City Hall
Levitt Pavilion

Texas LIVE
Live by Lowes Hotel
Globe Life Park
Globe Life Field - Texas Rangers
AT&T Stadium - Dallas Cowboys
Esports Stadium
Six-Flags over Texas
Hurricane Harbor
General Motors Assembly



CONTACT

Vic Meyer | 817.710.1113 | vmeyer@holtlunsford.com
Reilly Clark | 817.632.6157 | rclark@holtlunsford.com

The information is provided by sources deemed reliable, however, Holt Lunsford Commercial makes no guarantees, warranties or representations as to the completeness or accuracy thereof.

**UP TO
12,334 SF
FOR LEASE**

700 HIGHLANDER

Arlington, Texas 76015



ARLINGTON HIGHLANDS

- Q-201** BJ's Restaurant & Brewhouse
- E-101** Chicken Salad Chick
- N-110** Dog Haus Biergarten
- K-121** Freebirds World Burrito
- A-117** India Grill
- E-113** Kincaid's Hamburgers
- B-101** McAlister's Deli
- A-101** Which Wich Superior Sandwiches

- O-101** Bar Louie
- N-150** Black-eyed Pea
- X-415** Bone Daddy's
- O-199** Chuy's
- N-130** Pinkberry
- N-140** Pluckers Wing Bar
- Y-421** Red Robin Gourmet Burgers & Spirits
- W-401** Walk-On's

- K-133** BoomerJack's Grill & Bar
- E-149** Cold Stone Creamery
- F-137** Gloria's
- R-215** P.F. Chang's
- E-145** Potbelly Sandwich Works
- E-157** Starbucks Coffee
- L-101** The Keg Steakhouse + Bar

- M-189** Genghis Grill
- T-241** Lazy Dog
- U-301** Mimi's – Bistro+Bakery
- F-149** Piranha Killer Ramen
- M-119** The Melting Pot Restaurant
- M-141** Torchy's Tacos

CONTACT

Vic Meyer | 817.710.1113 | vmeyer@holtlunsford.com
 Reilly Clark | 817.632.6157 | rclark@holtlunsford.com



The information is provided by sources deemed reliable, however, Holt Lunsford Commercial makes no guarantees, warranties or representations as to the completeness or accuracy thereof.

