

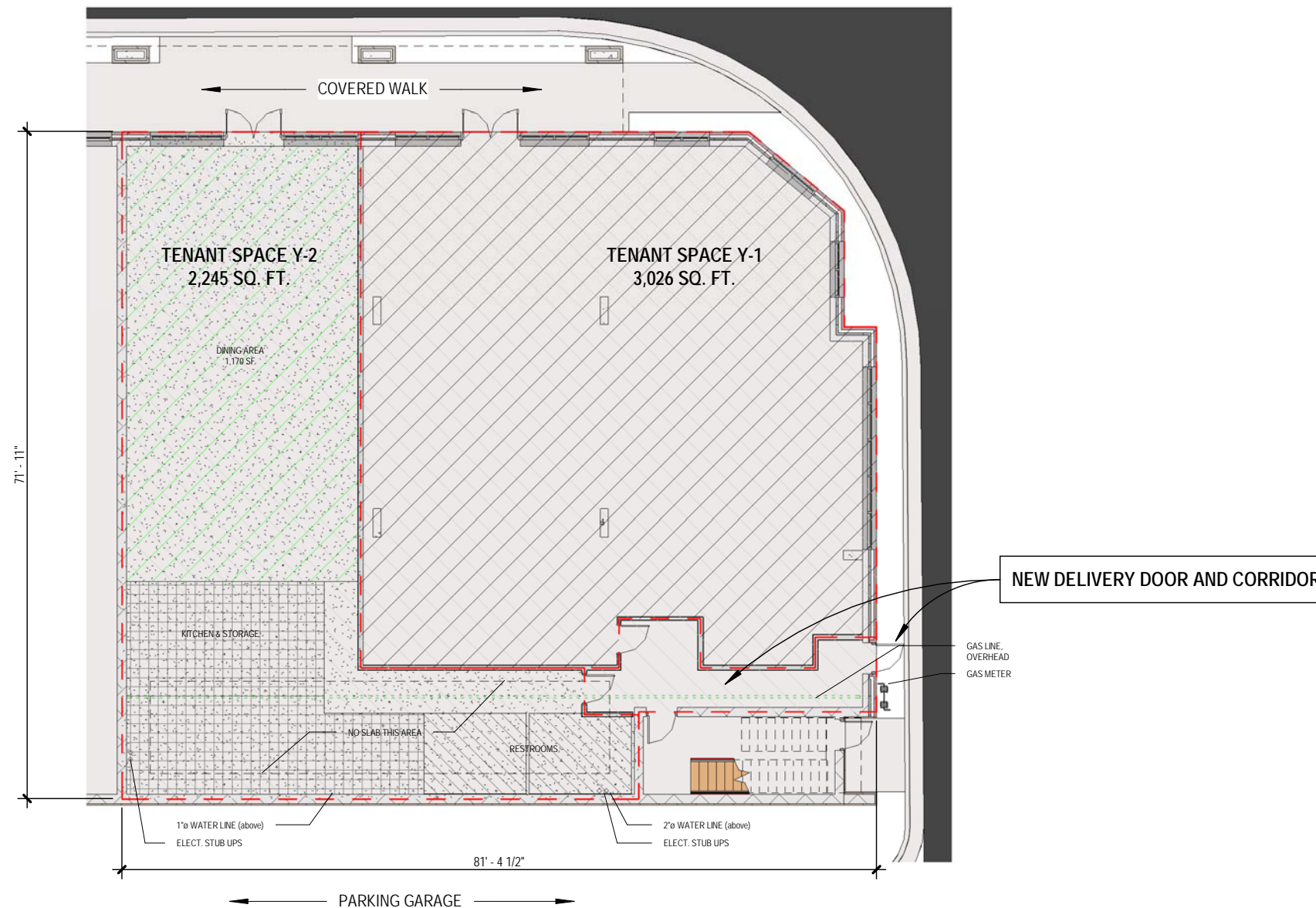


**CONTINENTAL REALTY**

Mount Pleasant Towne Centre  
Tenant Space Y-1&2  
Palmetto Grande Drive, Mount Pleasant, SC

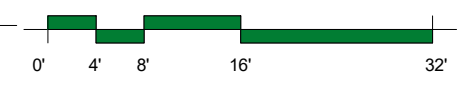
**SPACE DATA**

GROSS LEASABLE AREA:	5,492 sq. ft.
JURISDICTION:	Town of Mount Pleasant
CEILING / JOIST HGT.:	11'-5" top of storefront, ±14'-4" bot. slab
NUMBER OF EXITS:	3
SPRINKLER:	Yes
FIRE ALARM:	No
GAS:	Yes
WATER:	1"Ø & 2"Ø overhead
ELECTRIC:	N/A
HVAC:	N/A
CONSTRUCTION TYPE:	II-B, Sprinklered, Unprotected (IBC 2018)
OCCUPANCY TYPE:	N/A

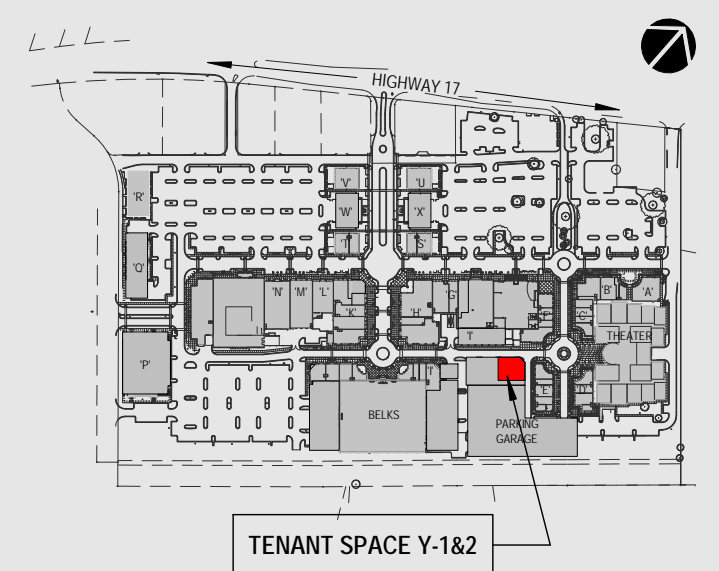


**LOD - TENANT SPACE Y1&2 (SCHEMATIC LAYOUT)**

SCALE: 1/16" = 1'-0"



**M.P. TOWNE CENTRE - LOCATOR MAP**



EXTERIOR FRONT



EXTERIOR FRONT



INTERIOR REAR & SIDE