

Furnished “Plug & Play”

Class B Office Sublease

9111 E. Douglas Ave
Suite 140-A
Wichita, KS 67207
www.cbre.com/kansascity

5,401 SF Office Space Available



Impact Home Health

9111 E. Douglas Ave, Suite 140-A, Wichita, KS 67207

Property Details

+ Total Available Space: 5,401 SF

+ Lease Rate: \$13.00/SF Full Service Gross

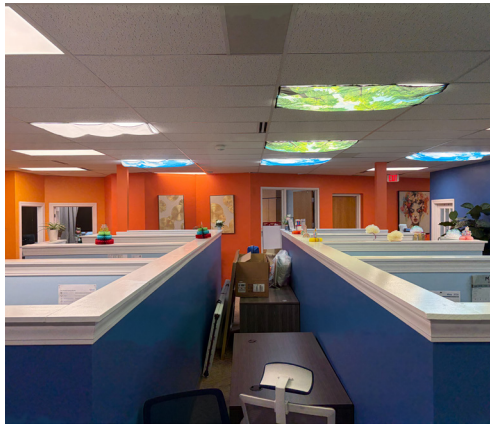
+ Building Size: 248,418 SF

+ Location: Douglas/Webb Road

+ Lease/Sublease Term: Through January 31, 2030

+ Parking: Free and incommon

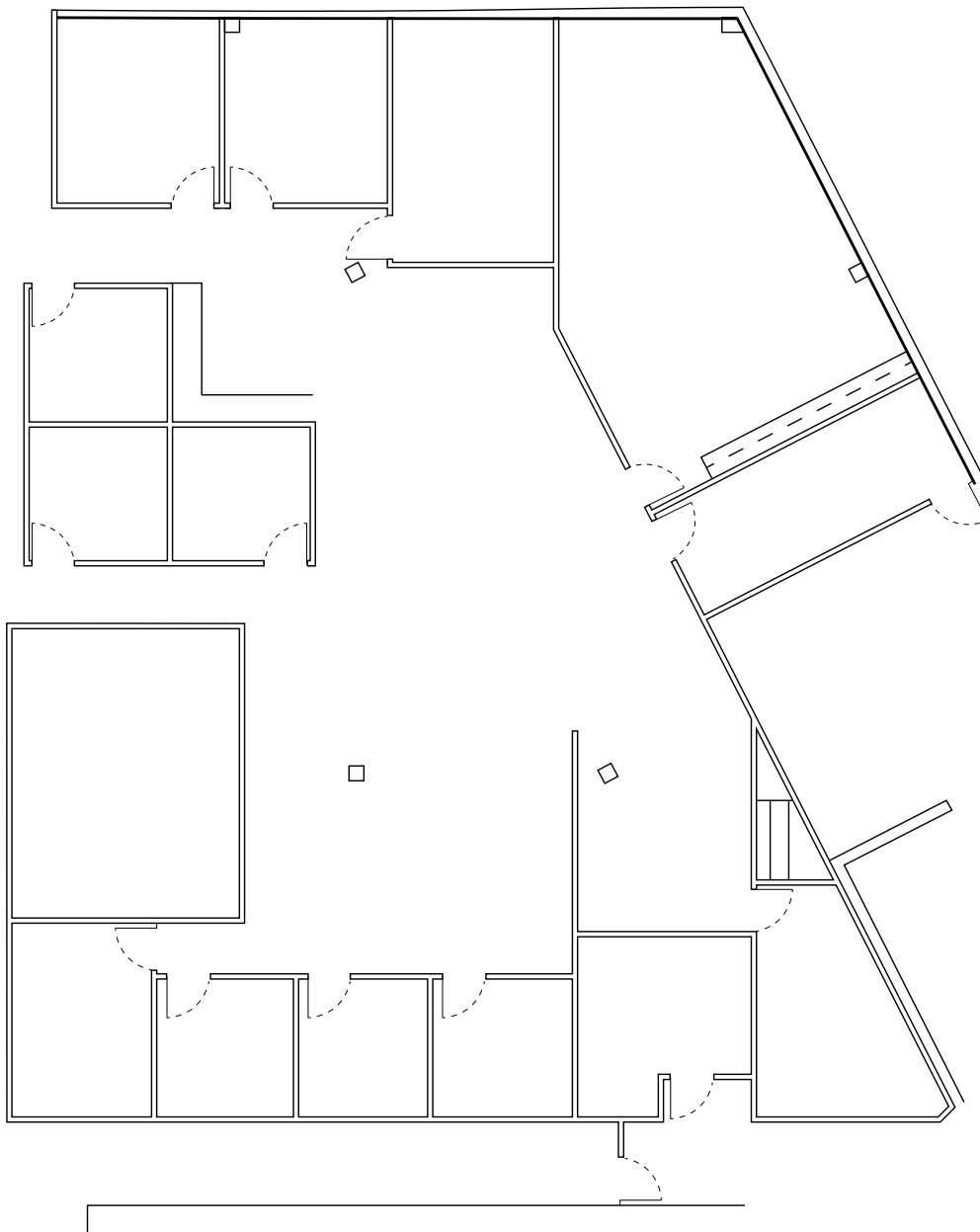
Photos



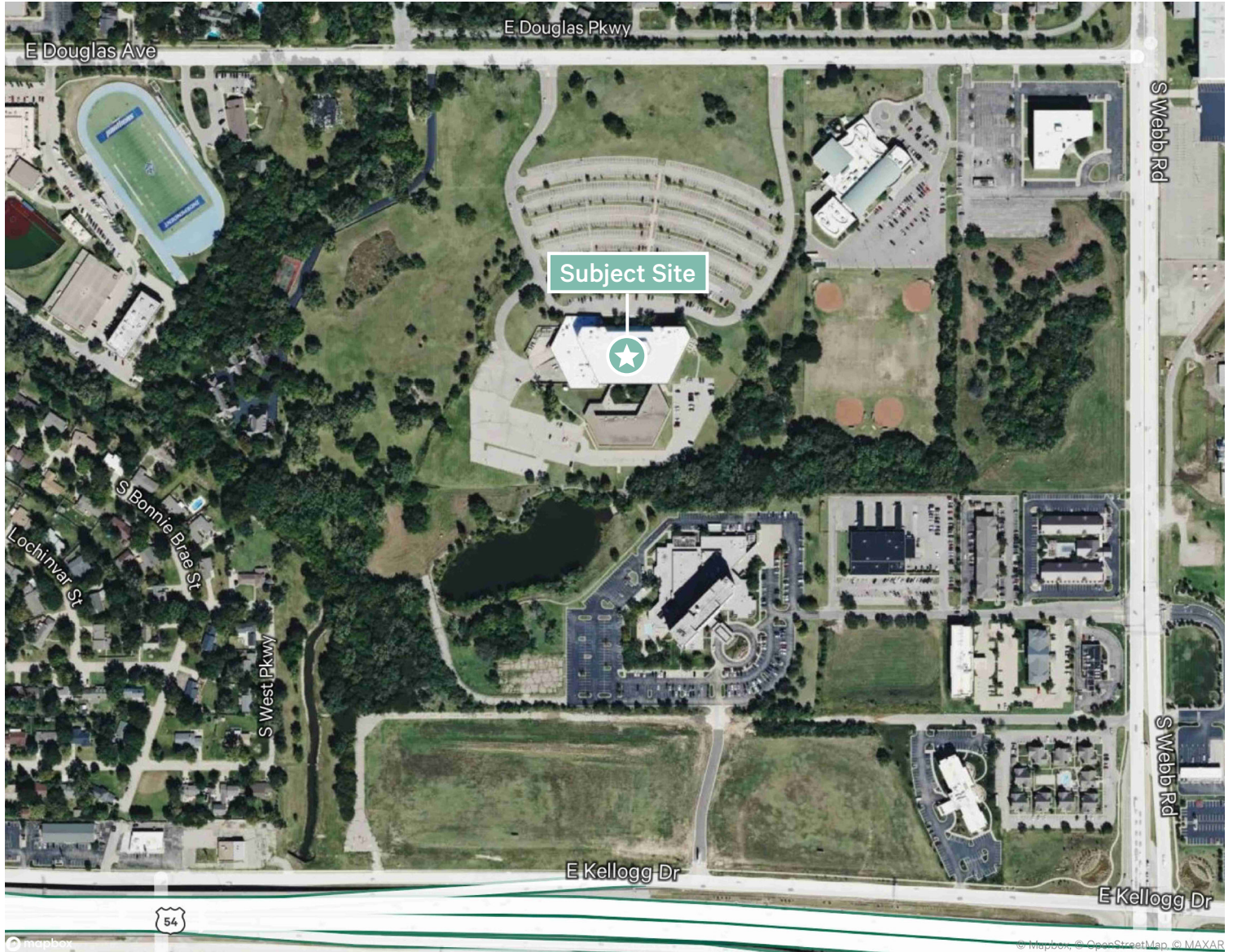
Property Highlights

- + Access to Kansas Turnpike
- + Adjacent to the YMCA
- + On-site security
- + Ample parking
- + Walking paths
- + On-site managers and maintenance
- + On-site health facility
- + Outstanding ownership

Floor Plan



Aerial Map



Contact Us

Beau Hudson

Vice President

+1 316 706 5500

beau.hudson@cbre.com

© 2026 CBRE, Inc. All rights reserved. This information has been obtained from sources believed reliable, but has not been verified for accuracy or completeness. You should conduct a careful, independent investigation of the property and verify all information. Any reliance on this information is solely at your own risk. CBRE and the CBRE logo are service marks of CBRE, Inc. All other marks displayed on this document are the property of their respective owners, and the use of such logos does not imply any affiliation with or endorsement of CBRE. Photos herein are the property of their respective owners. Use of these images without the express written consent of the owner is prohibited.