

# Building for sale or lease

1340 Veteran's Street  
Pincher Creek, AB



**Discover modern design  
& turnkey versatility in a  
high-exposure location**



2,875 sf main &  
2,700 sf basement



Modern & flexible  
building layout



Desirable location

## Get more property information

**Vinko Smiljanec**

Senior Associate

587 425 5745

[vinko.smiljanec@avisonyoung.com](mailto:vinko.smiljanec@avisonyoung.com)

**Josh Marti**

Principal, Vice President

403 9420144

[josh.marti@avisonyoung.com](mailto:josh.marti@avisonyoung.com)



## Property Description

Built in 2014 and renovated in 2021, this 2,875 sf main floor plus 2,700 sf of largely finished lower-level building provides over 22 paved parking stalls, including 11 directly in front, making it ideal for medical, professional office, retail, or restaurant use. Constructed with an ICF foundation, Hardie siding, metal roofing, and attractive rockwork, it offers durability and a maintenance-free, professional appearance.

Inside, you'll find a modern, flexible layout with large windows, multiple access points, two high-efficiency furnaces, air conditioning, enhanced ventilation, extensive plumbing and electrical installations for medical applications, bathrooms on both levels, abundance of data cabling, surveillance, and alarm systems.

With a 2023 commercial appraisal of \$1.27 million and a replacement cost exceeding \$2.5 million, this newer, versatile building delivers exceptional value and move-in readiness for your next venture in one of Pincher Creek's most desirable commercial locations. Don't miss out on this one.

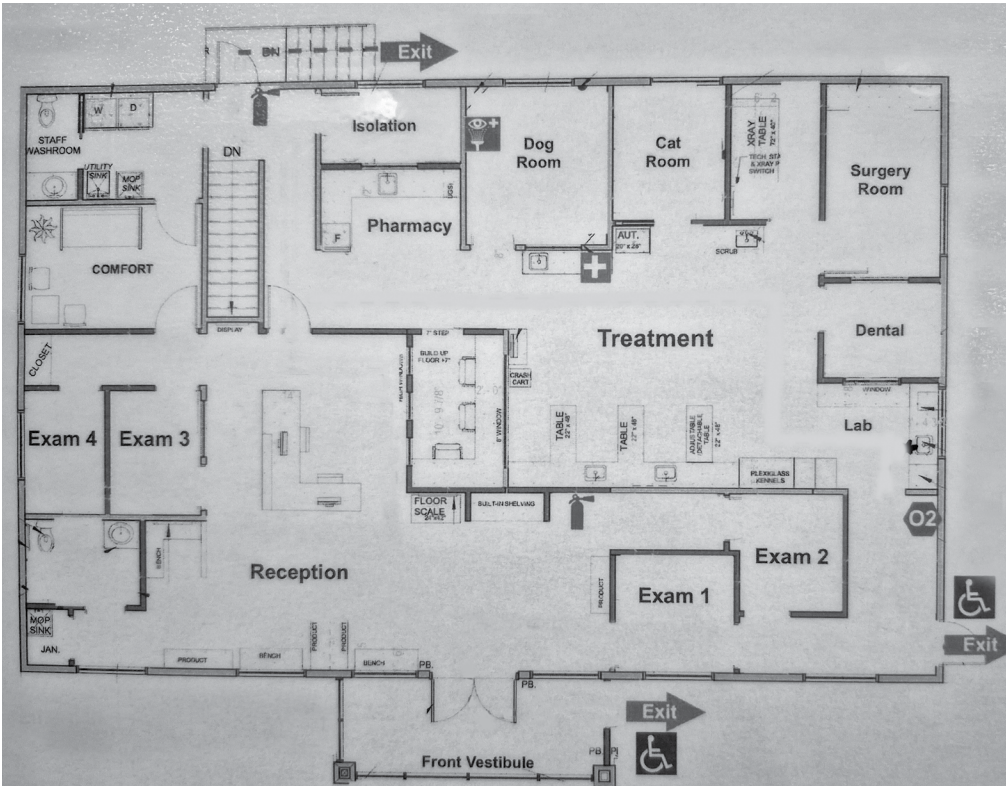
## Offering Summary

<b>Opportunity</b>	2,875 sf main floor 2,700 sf basement
<b>Site Size</b>	0.51 acres
<b>Legal Address</b>	1410447;1;5
<b>Zoning</b>	Highway/Comprehensive Commercial
<b>Sale Price</b>	\$749,000
<b>Lease Price</b>	Market Rates
<b>Possession</b>	Negotiable

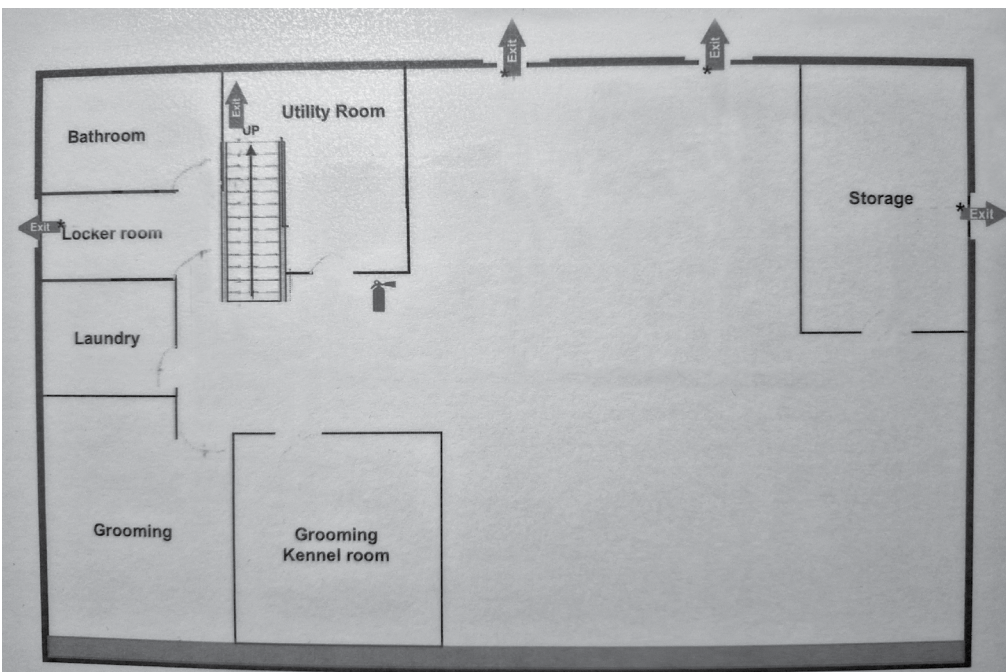
## Location Description

Situated at 1340 Veteran's Street, Pincher Creek, this exceptional high-exposure commercial property offers outstanding visibility across from the Pincher Creek Health Centre with excellent access from Waterton Avenue (AB-6) and close proximity to Crowsnest Highway (AB-3). Located in a thriving commercial area near Walmart with strong daily traffic and excellent neighboring businesses, this property combines visibility, accessibility, and quality construction.

## Floor Plan



Main Floor



Basement





Subject Property

PINCHER CREEK HEALTH CENTRE

## Get more property information

**Vinko Smiljanec**  
Senior Associate  
587 425 5745  
vinko.smiljanec@avisonyoung.com

**Josh Marti**  
Principal, Vice President  
403 942 0144  
josh.marti@avisonyoung.com

Avison Young | 704 4th Avenue South, Suite 295 | Lethbridge, AB T1J 0N8 | 403 330 3338

© 2026. Avison Young. Information contained herein was obtained from sources deemed reliable and, while thought to be correct, have not been verified. Avison Young does not guarantee the accuracy or completeness of the information presented, nor assumes any responsibility or liability for any errors or omissions therein.

