

For Lease

2320 Bristol Circle

Oakville, ON



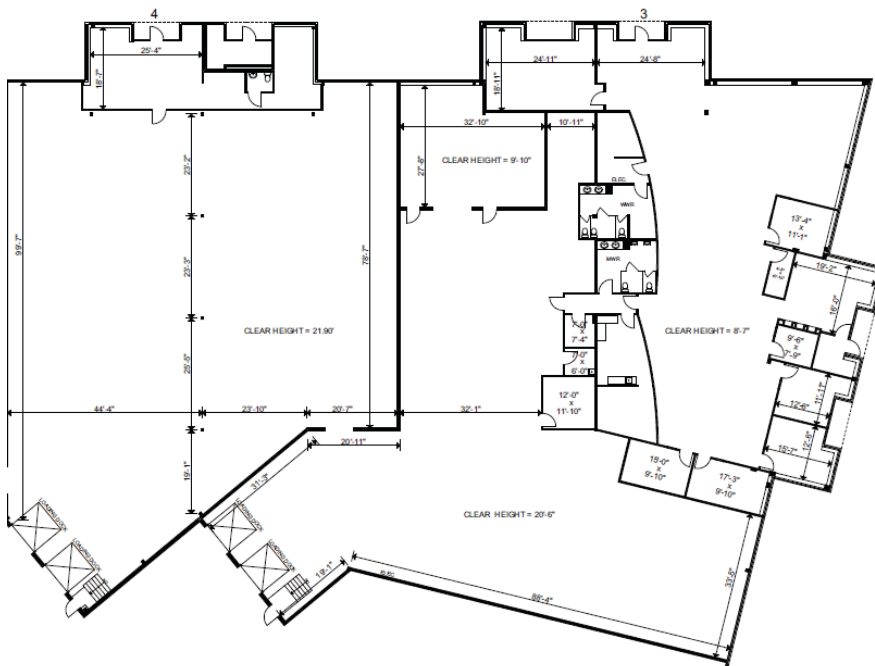
3-4

Total Square Feet
23,816 SF

Availability: Immediately

Key features:

- 20'6"–21.9' clear height
- 8,735 sf. of office built out
- 4 loading dock doors
- Kitchenette
- Net Rent: \$18.50 psf
- 2025 TMI: \$6.60 psf



Dimpal Bulsara
Leasing Manager
Sales Representative
QuadReal Property Group Brokerage

T 905-798 7426
E dimpal.bulsara@quadreal.com
W www.quadreal.com

