



**WESTFIELD  
INDUSTRIAL**

3546 N 1150 W Spanish Fork

STARTING AT  
**\$1.20 SQ/FT**  
MOVE IN READY

CONTACT BROKER FOR  
PURCHASE PRICE

## FOR SALE / LEASE

### FENCED YARD SPACE AVAILABLE

Located just minutes from downtown Spanish Fork, the Spanish Fork Municipal Airport, and the Interstate 15 onramp. This development offers modern, versatile, and strategically located industrial space in one of the area's fastest-growing business hubs.

Units range from 3,888 Sq/ft to 4,955 Sq/ft but can be combined to accommodate up to 15,000 + Sq/ft

## PROPERTY HIGHLIGHTS

- Industrial (Manufacturing, Warehouse)
- I-1 zoning
- 20 feet ceiling height
- 14x14 roll-up garage doors (Bldg.4 12x12)
- Private Bathroom
- Office space
- Yard space (extra cost)
- Option for Buildout



## GET MORE INFORMATION

**435-705-4990**  
**NATASHA ISOM**  
PRINCIPAL BROKER

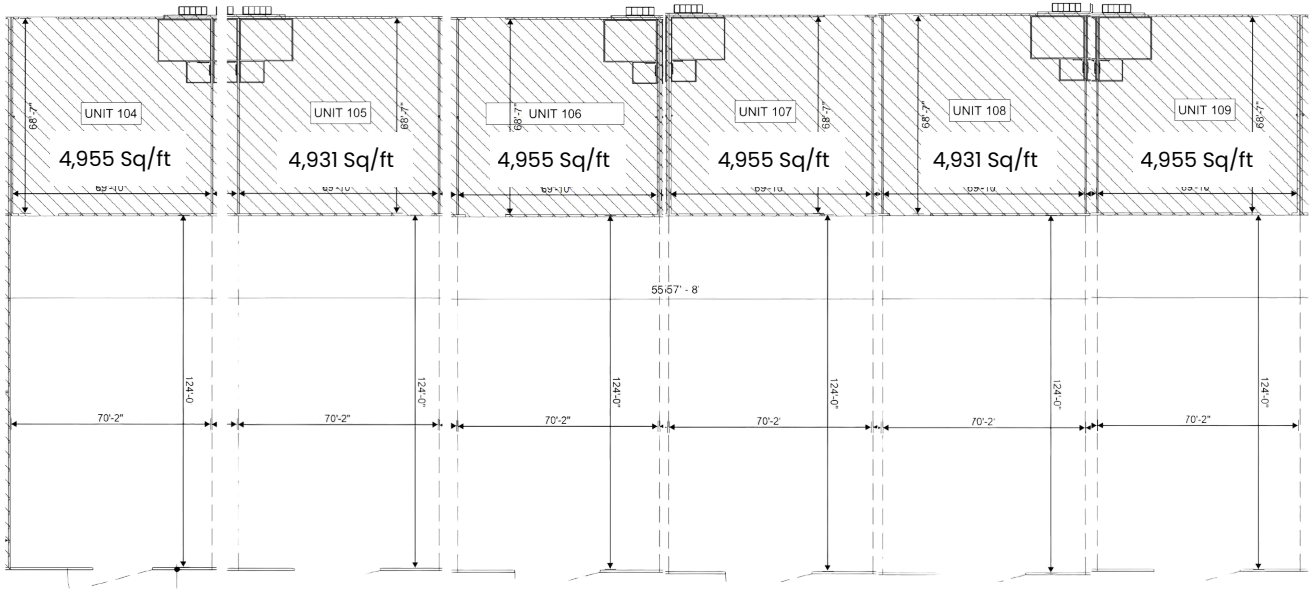
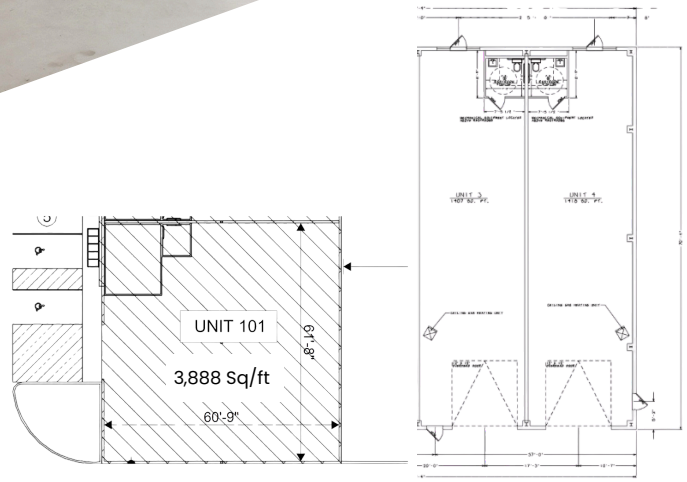
**801-787-7255**  
**AARON COOK**  
PRINCIPAL BROKER

 Luxury Group

**COREUTAH**  
REAL ESTATE - COMMERCIAL



**FLOOR PLANS**  
 MOVE IN READY -  
 YARD SPACE  
 AVAILABLE



**GET MORE INFORMATION**

**435-705-4990**  
**NATASHA ISOM**  
 PRINCIPAL BROKER

**801-787-7255**  
**AARON COOK**  
 PRINCIPAL BROKER

